



**VXT 325**  
**STATIONARY VERTICAL FEED MIXER**  
**ELECTRIC DRIVE**



**OPERATION AND PARTS MANUAL**

**ROTO-MIX LLC**  
**P.O. BOX 1724**  
**2205 E. Wyatt Earp Blvd.**  
**Dodge City, Kansas 67801**  
**(620) 225-1142**

©ROTO-MIX 2006

SERIAL NUMBER \_\_\_\_\_

**This Page intentionally left blank.**

# TABLE OF CONTENTS

	PAGE NO.
WARRANTY .....	4
SCALES WARRANTY & SERVICE POLICY .....	5
INTRODUCTION.....	6
OPERATOR QUALIFICATIONS .....	7
SAFETY .....	8-13
SAFETY DECALS .....	14
PRE-OPERATION .....	15
LOADING INSTRUCTIONS & PRECAUTIONS .....	16
MAINTENANCE.....	17
LUBRICATION .....	18-19
V-BELT TENSIONING INSTRUCTIONS .....	20
TROUBLE SHOOTING.....	21
FEATURES & SPECIFICATIONS .....	22
DIMENSIONS .....	23
REPAIR PARTS TABLE OF CONTENTS .....	25



## Limited Warranty Statement

ROTO-MIX LLC warrants to the original purchaser all products manufactured by it to be free from defects in material and workmanship under normal use and service.

ROTO-MIX's obligation under this warranty is limited to repairing or replacing, as the company may elect, free of charge and without charge for installation, at the place of business of a dealer or distributor authorized to handle the equipment covered by this warranty or at a ROTO-MIX plant, any parts that prove, in the company's judgment, to be defective in material or workmanship within one (1) year after delivery to the original purchaser, and still owned by the original purchaser. This warranty shall in no way make ROTO-MIX liable to anyone for personal injuries or damages, loss of time, or expense of any kind either direct or indirect resulting from part failure or defect. This warranty is subject to acts of God, fire and existing conditions of supply and demand, or production, or ability or inability to deliver, or for any other valid reason beyond the reasonable control of ROTO-MIX, to obtain materials, manufactured replacement parts, or make delivery thereof. No distributor, dealer, agent, or ROTO-MIX employee (other than the CEO or President in writing) is authorized to extend any other or further express or implied warranty or incur any additional obligation on ROTO-MIX's behalf in connection with the sale of this product.

### Customer Responsibility

**Product Registration** - It is a condition of this warranty that the original purchaser must fill out the warranty card furnished by ROTO-MIX and that it be returned to ROTO-MIX and be recorded in ROTO-MIX's owner file for this warranty to be valid. In the event an owner's card is not on file at the ROTO-MIX office, the warranty period will extend only from date equipment was picked up or shipped from the ROTO-MIX plant.

**Maintenance** - It is the customer's responsibility to maintain their equipment in accordance with the instructions provided in the Operator's Manual. ROTO-MIX recommends that you keep records and receipts; you may be asked to prove that maintenance instructions have been followed.

**Operation** - It is the customer's responsibility to operate the equipment only for the purpose for which it was designed and in accordance with all safety and operational recommendations contained in the Operators Manual. If a defect in materials or workmanship occurs, it is the customer's responsibility to cease operating the equipment until authorized repairs are made. **Damage, which occurs from continued operation, may not be covered by this warranty.**

### What this Warranty Covers

This warranty covers failures caused by defects in materials or workmanship only.

#### This Warranty does not cover failures caused by:

- ◆ Improper operation
- ◆ Natural calamities
- ◆ Unauthorized modifications
- ◆ Unauthorized repairs
- ◆ Use of Non ROTO-MIX parts
- ◆ Neglected maintenance
- ◆ Usage contrary to the intended purpose of the product

#### This Warranty does not cover replacement of Wear or Maintenance Items (unless defective) including, but not limited to.

- ◆ Lubricants
- ◆ Filters
- ◆ Hoses
- ◆ Tires
- ◆ Augers
- ◆ Wipers
- ◆ Chains
- ◆ Idlers
- ◆ Blades
- ◆ Belts

#### This Warranty does not cover:

Pickup and delivery of the equipment  
 Service Calls or Travel Time to and from sites  
 Rental of replacement equipment during repair period  
 Products that have been declared a total loss and subsequently salvaged  
 Overtime labor charges

### Right to Make Changes

ROTO-MIX reserves the right to make any changes to a ROTO-MIX product at any time without incurring any obligation with respect to any product previously ordered, sold or shipped, with or without notice.

### Parts Warranty

ROTO-MIX warranties replacement parts against defects in materials or workmanship for a period of 90 days or the remainder of the product warranty, whichever is longer. Remedy for defective replacement parts for units that are beyond the original product warranty, will be limited to replacement of the failed part. Failures that are due to damage, improper installation, lack of maintenance or improper operation will not be covered.

**ROTO-MIX 2205 East Wyatt Earp Blvd., Dodge City, KS 67801 (620) 225-1142 Fax: (620) 225-6370**

## **SCALES WARRANTY & SERVICE POLICY**

### **DIGI-STAR SCALE SYSTEMS**

Digi-Star, LLC warrants for a period of one year from date of installation, to correct by repair or replacement, at Digi-Star's option, any defect in material or workmanship in any part of this product. In the event of replacement, Digi-Star's sole obligation shall be to provide replacement products or parts. F.O.B. Digi-Star, LLC, W5527 Hwy 106, Fort Atkinson, WI 53538 USA.

### **WEIGH-TRONIX SCALE SYSTEMS**

WEIGH-TRONIX warrants for a period of one year from date of installation, to correct by repair or replacement, at Weigh-Tronix's option, any defect in material or workmanship in any part of this product. In the event of replacement, Weigh-Tronix's sole obligation shall be to provide replacement products or parts. F.O.B. Avery Weigh-Tronix, 1000 Armstrong Drive, Fairmont, MN 56031-1439 USA.

## INTRODUCTION

Congratulations on the purchase of your new Vertical Mixer from ROTO-MIX. With proper operation and preventative maintenance it will last for years.



This SAFETY ALERT SYMBOL indicates important safety messages in the manual. When you see this symbol, be alert to the possibility of PERSONAL INJURY and carefully read the message that follows.

**⚠ WARNING** NEVER OPERATE WITHOUT ALL COVERS, SHIELDS AND GUARDS IN PLACE. KEEP HANDS, FEET AND CLOTHING AWAY FROM MOVING PARTS.

Some covers and guards have been removed for illustrative/photographic purposes only in this manual. However, equipment should never be operated in this condition. Keep all shields in place. If shield removal becomes necessary for repairs, replace the shield prior to use.

The Guarantee appears in the front of this book along with the Registration and Inspection Certificate.

For information on ordering repair parts, refer to the Repair Parts section at the back of this book.

The serial number plate is located on the drivers side lower front of the main frame. This number should be recorded on the Registration and Inspection Certificate for your reference and for proper identification of your mixer by ROTO-MIX.

You are urged to study this manual and follow the instructions carefully. Your efforts will be repaid in better operation and service as well as a savings in time and repair expense.

Failure to read this manual and understand the safe operation of the mixer could lead to serious injury.

If you do not understand the instructions in this manual contact either your dealer or ROTO-MIX at Dodge City, Kansas 67801.

This supersedes all previous published instructions.

## OPERATOR QUALIFICATIONS

Operation of this mixer/feeder shall be limited to competent and experienced persons. In addition, anyone who will operate or work around a mixer/feeder must use good common sense. In order to be qualified, he or she must also know and meet all other qualifications, such as:

1. Some regulations specify that no one under the age of sixteen (16) may operate power machinery. It is your responsibility to know what these regulations are in your area and/or situation.
2. Current OSHA regulations state in part: At the time of initial assignment and at least annually thereafter, the employer shall instruct **EVERY** employee in the safe operation and servicing of all equipment with which the employee is, or will be involved.
3. Unqualified persons are to **STAY OUT OF THE WORK AREA.**
4. A person who has not read and understood all operating and safety instructions is not qualified to operate the machinery.

**FAILURE TO READ THIS MIXER/FEEDER MANUAL AND ITS SAFETY INSTRUCTIONS IS A MISUSE OF THE EQUIPMENT.**



## SAFETY

**TAKE NOTE!** THIS SAFETY ALERT SYMBOL FOUND THROUGHOUT THIS MANUAL IS USED TO CALL YOUR ATTENTION TO INSTRUCTIONS INVOLVING YOUR PERSONAL SAFETY AND THE SAFETY OF OTHERS. FAILURE TO FOLLOW THESE ISTRUCTIONS CAN RESULT IN INJURY OR DEATH.



THIS SYMBOL MEANS

-ATTENTION!

-BECOME ALERT!

-YOUR SAFETY IS INVOLVED!

**SIGNAL WORDS:** Note the use of the signal words DANGER, WARNING, and CAUTION with the safety messages. The appropriate signal word for each has been selected using the following guidelines:

**DANGER:** Indicates an imminently hazardous situation that, if not avoided, will result in serious injury or death. This signal word is to be limited to the most extreme situations typically for machine components which, for functional purposes, cannot be guarded.

**WARNING:** Indicates a potentially hazardous situation that, if not avoided, will result in serious injury or death, and includes hazards that are exposed when guards are removed. It may also be used to alert against unsafe practices.

**CAUTION:** Indicates a potentially hazardous situation that, if not avoided, may result in minor or moderate injury. It may also be used to alert against unsafe practices.

If you have questions not answered in this manual or require additional copies or the manual is damaged, please contact your dealer or ROTO-MIX, 2205 E. Wyatt Earp, Dodge City, Kansas, 67801. (Telephone) 620-225-1142 (Fax) 620-225-6370



## **SAFETY FIRST**

**REMEMBER:** The careful operator is the best operator. Most accidents are caused by human error. Certain precautions must be observed to prevent the possibility of injury or death.



**DO NOT ALLOW PERSONNEL OTHER THAN THE QUALIFIED OPERATOR NEAR THE MACHINE.**



**NEVER START MACHINE UNTIL ALL GUARDS AND SAFETY SHIELDS ARE IN PLACE.**



**DO NOT CLEAN, ADJUST OR LUBRICATE THE MACHINE WHILE IT IS IN MOTION.**



**LOOSE OR FLOPPY CLOTHING SHOULD NOT BE WORN BY THE OPERATOR.**

## **OPERATING PRECAUTIONS & INSTRUCTIONS**

- A. Check to see that no obstructions are present in the mixer prior to start up.
- B. Before loading, run the mixer empty and check all operations.
- C. Do not overload the mixer, as the mixing efficiency may be reduced and unit damage may occur. (See loading instructions).
- D. Remove all moisture drain plugs if the mixer is going to set in the rain or snow.
- E. Be sure all shields are in place before operation.
- F. Use common sense when operating.

## **EQUIPMENT SAFETY GUIDELINES**

Safety of the operator is one of the main concerns in designing and developing a new piece of equipment. Designers and manufactures build in as many safety features as possible. However, every year many accidents occur which could have been avoided by a few seconds of thought and a more careful approach to handling equipment. You, the operator, can avoid many accidents by observing the following precautions in this section. To avoid personal injury, study the following precautions and insist those working with you, or for you, follow them.

In order to provide a better view, certain photographs or illustrations in this manual may show an assembly with a safety shield removed. However, equipment should never be operated in this condition. Keep all shields in place. If shield removal becomes necessary for repairs, replace the shield prior to use.

Replace any CAUTION, WARNING, DANGER or instruction safety decal that is not readable or is missing. Location of such decals are indicated in this manual.

Do not attempt to operate this equipment under the influence of drugs or alcohol.

Review the safety instructions with all users annually.

This equipment is dangerous to children and persons unfamiliar with its operation. The operator should be a responsible adult familiar with farm and industrial machinery and trained in this equipment's operations. Do not allow persons to operate or assemble this until they have read this manual and have developed a thorough understanding of the safety precautions and of how it works.



---

### KEEP ALL SHIELDS IN PLACE

Do not operate mixer without safety shields in place.

Rotating parts can crush or dismember causing personal injury or death.



---

### OPERATE MIXER/FEEDER SAFELY

Rotating parts can entangle or strike people, resulting in personal injury or death.

Never enter a mixer while in operation.

Operate the mixer from a safe distance.



---

### AVOID HIGH-PRESSURE FLUIDS

Escaping fluid under pressure can penetrate the skin causing serious injury or death.

Avoid the hazard relieving pressure before disconnecting hydraulic or other lines. Tighten all connections before applying pressure.

Search for leaks with a piece of cardboard. Protect hands and body from high pressure fluids.

If an accident occurs, see a doctor immediately. Any fluid injected into the skin must be surgically removed within a few hours or gangrene may result. Doctors unfamiliar with this type of injury should reference a knowledgeable medical source.





## **PRACTICE FIRE PREVENTION**

Keep fire extinguishers accessible at all times. Use the extinguisher recommended for the material being processed. It should be rated safe for use on electrical fires.

Never smoke close to combustible material.

Clean the area before welding or other activities which may make sparks.

Keep all components that generate excessive heat clear of oil and other combustible materials.



## **SAFETY DECAL CARE**

Keep safety decals and signs clean and legible at all times.

Replace safety decals and signs that are missing or have become illegible.

Replaced parts that displayed a safety sign should also display the current sign.

Safety decals or signs are available from your dealer or the ROTO-MIX manufacturing plant.

### **How to Install Safety Decals:**

Be sure that the installation area is clean and dry.

Decide on the exact position before you remove the backing paper.

Remove the smallest portion of the split backing paper.

Align the decal over the specified area and carefully press the small portion with the exposed sticky backing in place.

Slowly peel back the remaining paper and carefully smooth the remaining portion of the decal in place.

Small air pockets can be pierced with a pin and smoothed out using the piece of decal backing paper.



## **PERFORMING MAINTENANCE:**

Good maintenance is your responsibility. Poor maintenance is an invitation to trouble.

Be certain all moving parts and attachments have come to a complete stop before attempting to perform maintenance.

Always use a safety support and block the machine. Never use a jack to support the machine.

Always use the proper tools or equipment for the job at hand.

Use extreme caution when making adjustments.

Never use your hands to locate hydraulic leaks on attachments. Use a small piece of cardboard or wood. Hydraulic fluid escaping under pressure can penetrate the skin.

When disconnecting hydraulic lines, shut off hydraulic supply and relieve all hydraulic pressure.

Openings in the skin and minor cuts are susceptible to infection from hydraulic fluid. If injured by escaping hydraulic fluid, see a doctor at once. Gangrene can result. Without immediate treatment, serious infection and reactions can occur.

Replace all shields and guards after servicing and before moving.

After servicing, be sure all tools, parts and service equipment are removed.

Do not allow grease or oil to build up on any step or platform.

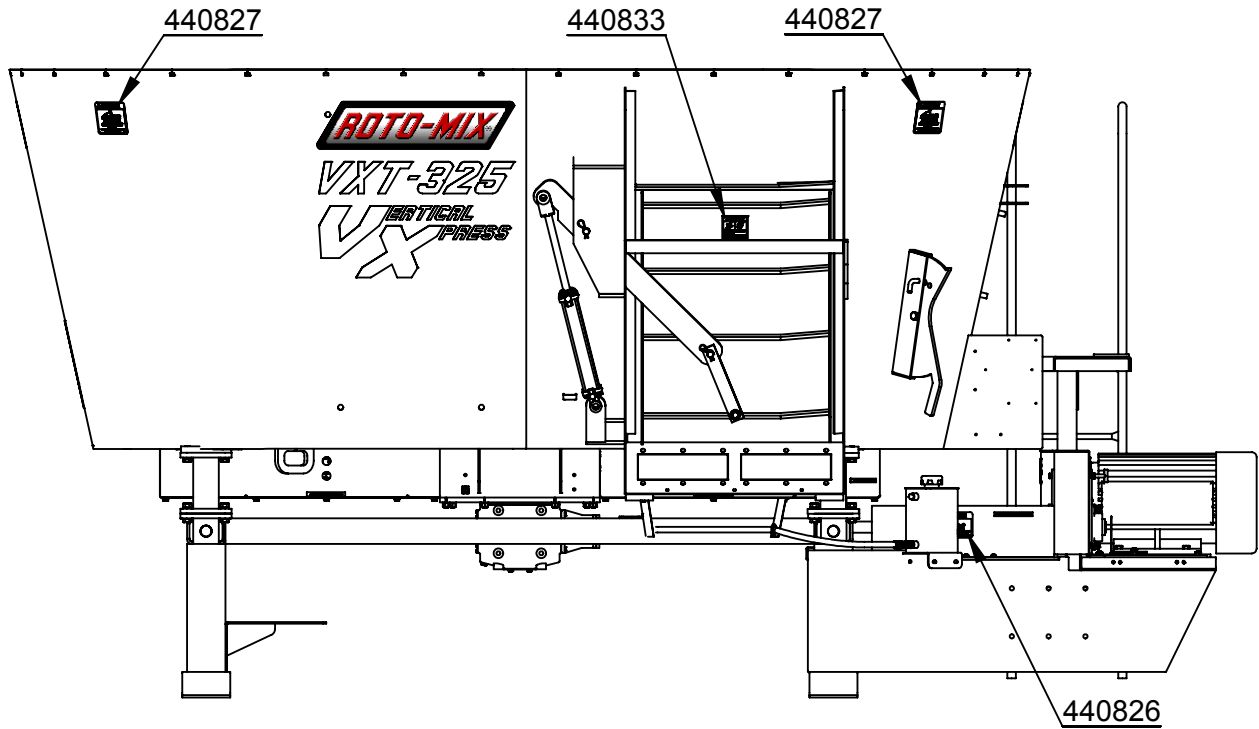


Never replace hex bolts with less than grade five (5) bolts unless otherwise specified.

Where replacement parts are necessary for periodic maintenance and servicing, genuine factory replacement parts must be used to restore your equipment to original specifications. ROTO-MIX will not claim responsibility for use of unapproved parts and/or accessories and other damages as a result of their use.

If equipment has been altered in any way from original design, ROTO-MIX does not accept any liability for injury or warranty.

# SAFETY DECALS



#440827



#440833



#440826

## **PRE-OPERATION**

### **PRE OPERATION CHECK LIST**

1. Carefully study and understand this manual.
2. Do not wear loose fitting clothing which may catch in moving parts.
3. Always wear protective clothing and substantial shoes.
4. Give the unit a visual inspection for any loose bolts, worn parts or cracked welds, and make necessary repairs. Follow the maintenance safety instructions included in this manual.
5. Be sure that there are no tools lying on or in the mixer.
6. Do not use the unit until you are sure that the area is clear, especially of children and animals.
7. Because it is possible that this mixer may be used in dry areas or in the presence of combustibles, special precautions should be taken to prevent fires and fire fighting equipments should be readily available.
8. Don't hurry the learning process or take the unit for granted. Ease into it and become familiar with your new mixer.
9. Practice operation of your mixer and its attachments. Completely familiarize yourself and other operators with its operation before using.

## **MAINTENANCE**

**ALWAYS DISCONNECT OR DISENGAGE POWER BEFORE CLEANING, ADJUSTING, LUBRICATION OR SERVICING THIS MACHINE. FAILURE TO HEED MAY RESULT IN SERIOUS PERSONAL INJURY OR DEATH.**

### **READ THE FOLLOWING BEFORE WELDING ON THIS MIXER/FEEDER**

When welding on your mixer, do not allow the current to flow through the bearings or the roller chains. Ground directly to the item being welded.

Always disconnect the scale instrumentation from the weigh bars or load cells and the power source. Be sure the current does not pass through weigh bars or load cells or scale indicator.

## LOADING INSTRUCTIONS & PRECAUTIONS

- A. Visually inspect mixer before each load.
- B. Do not overload the mixer. Mixer capacity is determined by weight. An overloaded mixer will not mix correctly, and will pull harder.
- C. Load hay first with machine running. Adjust restrictor plates (dogs) to fine tune length of cut. Always start with one dog, preferably the one furthest away from the discharge door, engage one hole and increase until length of cut is correct. **NOTE:** engaging dogs and excessive amount will cause mix quality to deteriorate and consume more power.
- D. Add balance of grain and/or commodities, keeping more fragile ingredients toward the end of the loading sequence as possible. For best results, add concentrates or other dry ingredients of small quantity as close to the middle of the loading sequence as possible.
- E. Load silage, green chop and/or other high moisture products.
- F. Load molasses, animal fat, and/or other liquid supplements last.
- G. Allow to mixer three to four minutes to complete mixing after last ingredient is added. (**NOTE:** this time will vary, and could be longer under certain conditions.)
- H. View mixing operation only from observation platform of mixer. Never allow more than two people on platform at one time.
- I. For best results, off load mixed feed with the door as open as possible to ensure even feed flow and clean out.



### HAY PREPARATION:

SMALL BALES (60 to 150 lbs., 2 or 3 wire), LARGE SQUARE BALES (3' x 4' x 8' or 4' x 4' x 8') and ROUND BALES. Remove all twine, wire and/or wrapping and load bale in mixer.



# MAINTENANCE

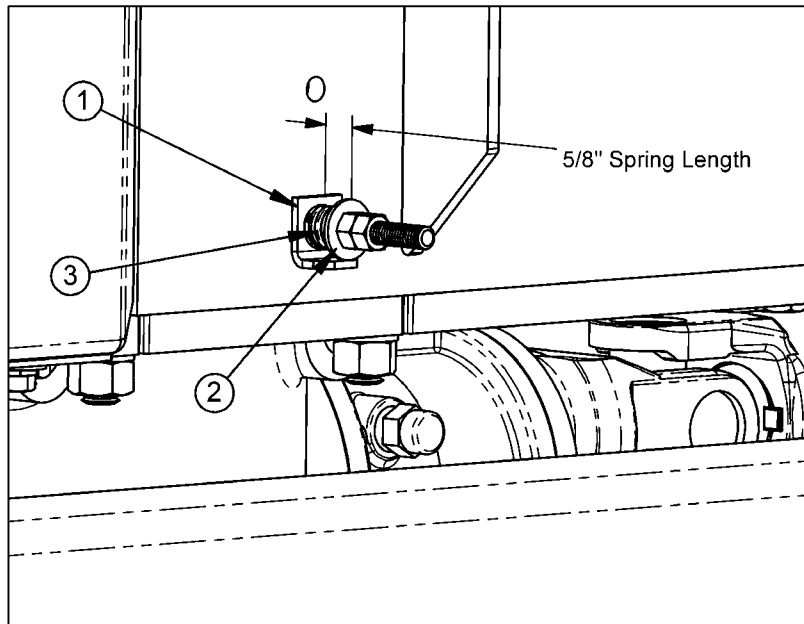
## READ THE FOLLOWING BEFORE WELDING ON THIS MIXER

**ALWAYS DISCONNECT OR DISENGAGE BEFORE CLEANING, ADJUSTING, LUBRICATING OR SERVICING THIS MACHINE. FAILURE TO HEED MAY RESULT IN SERIOUS PERSONAL INJURY OR DEATH.**

When welding on your mixer, do not allow the current to flow through the bearings. Ground directly to the item being welded. Always disconnect the scale instrumentation from the weigh bars and the power source. Be sure the current does not pass through weigh bars or scale indicator.

## DRIVE CHAIN ADJUSTMENT INSTRUCTIONS

The chain tension adjustment should be checked regularly, when the mixer is serviced. The washer (#2) should be adjusted so that it is 5/8" from the spring guide (#1), or at the end of the spring guide which is 5/8". When this spring (#3) is adjusted to 5/8" the drive chains should have the correct tension and when the chains are lubricated correctly the chains and sprockets will last longer. This adjustment should be maintained at locations on both sides of the mixer.



ITEM #	PART #	DESCRIPTION	QTY.
1	161226	VXT SPRING GAUGE 1" x 1-5/8"	2
2	402406	FLAT WASHER 3/8" PLTD	2
3	410013	SPRING, 3/4" x 1", BLUE DIE SPRING	2

## LUBRICATION

**DISENGAGE AND SHUT OFF POWER BEFORE LUBRICATING THE MACHINE.**

**LOOSE OR FLOPPY CLOTHING SHOULD NOT BE WORN BY THE OPERATOR.**

**PTO SHAFTS & U-JOINTS:** Grease every 10 to 20 hours.

**GEARBOX:** After the first 100 hours of operation, drain initial oil, preferably when box is warm. Flush out the gear case with an approved non-flammable, non toxic solvent and refill with oil.

Thereafter oil should be changed every 12 months when the machine is in moderate use. If machine usage is severe or more than 10 loads per day, it is advisable to change the oil every 6 months.

Inspect and wash oil reservoir breather cap as needed. Air dry before reinstalling.

Fill gearbox with **Synthetic Gear Lube 75W-90**.

**GEARBOX TEMPERATURES:** During normal running conditions, the temperature of the outer casing of the gearbox should not exceed 175°F (80°C).

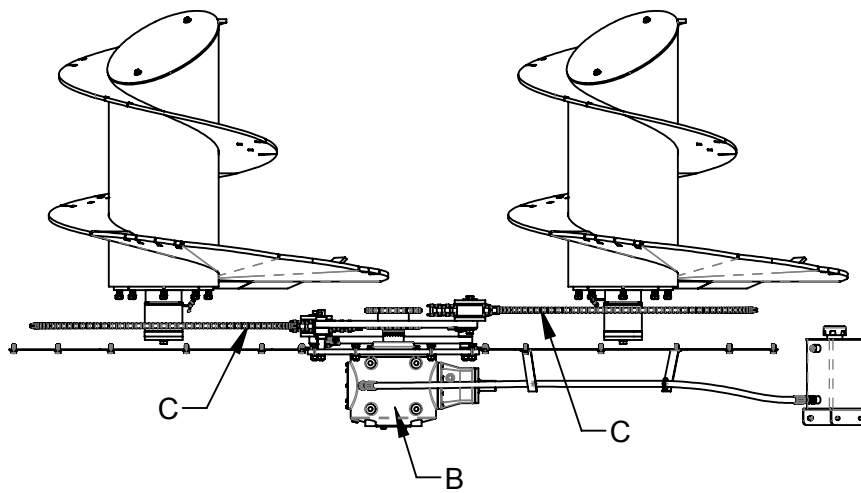
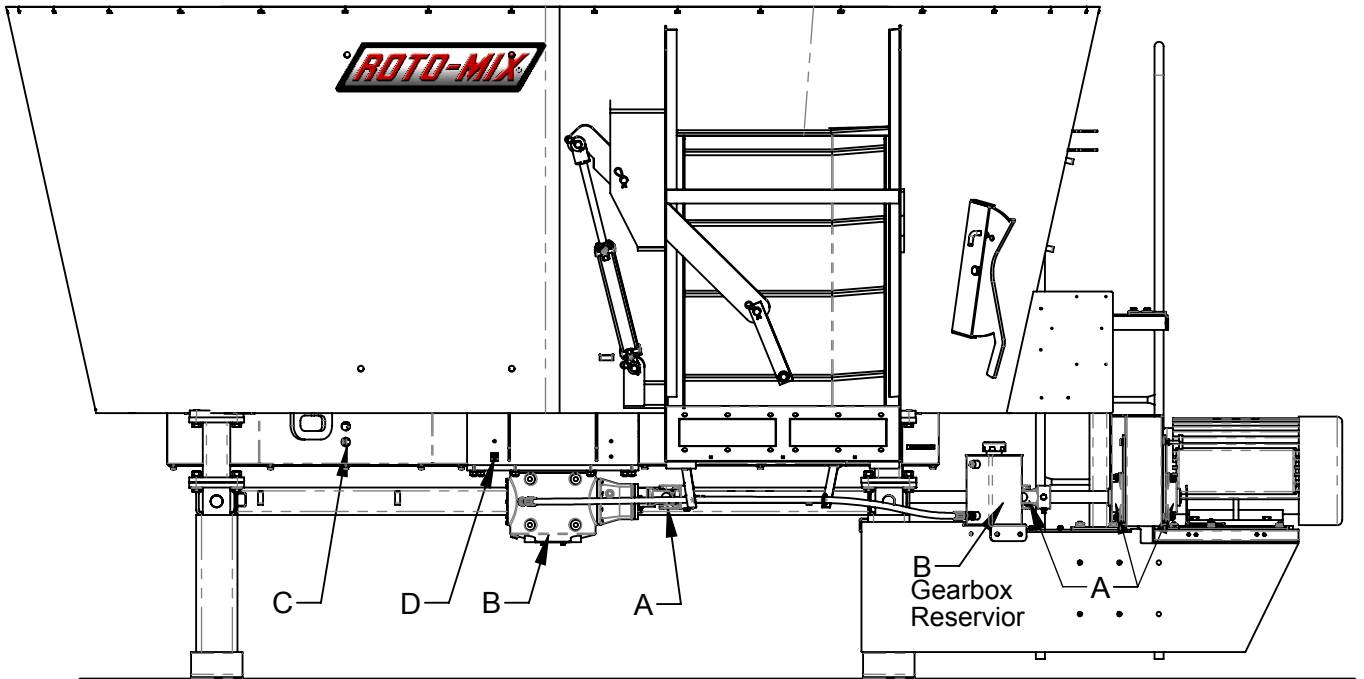
**RECOMMENDATION:** It is advisable to check the oil level of the gearbox at least once a month. If more than 10% of the total oil capacity has to be added, check for oil leaks.

## LUBRICATION CHART

**⚠ WARNING** ALWAYS DISCONNECT OR DISENGAGE POWER BEFORE ADJUSTING, LUBRICATION OR SERVICING THIS MACHINE. FAILURE TO HEED MAY RESULT IN SERIOUS PERSONAL INJURY OR DEATH.

LOCATION	ITEM	LUBRICATION	INTERVAL
A	U-Joint & Driveline bearings	Good Quality Grease	Every 8 hours
B	Gearbox	Synthetic Gear Lube 75W-90	After the first 500 hours of operation, then 2000 hours or every 12 months, whichever comes first.
C	Gearbox Drive Chain	Light Weight Oil	Spray On Lightly Thru Access Holes Every 40 Hours Of Operation
D	Grease Auger Bearings	All Purpose Grease	Every 16 HRS Of Operation

# VXT 325 STATIONARY LUBRICATION DIAGRAM

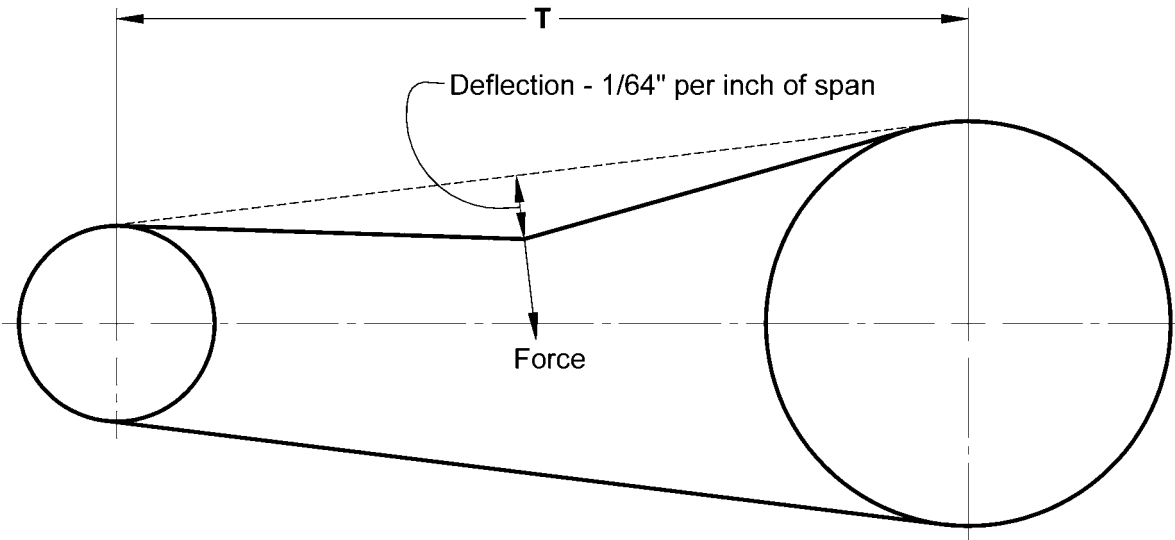


All Dimensions & Specifications are Approximate and Subject to Change Without Notice.

## V-BELT TENSIONING INSTRUCTIONS

V-belt tensioning adjustment can be made using a tension meter or other type spring scale, using the following procedure. After seating the belts in the groove and adjusting center distance so as to take up slack in the belts, further increase the tension until only a slight bow on the slack side is apparent while the drive is operating under load. Stop the drive, and using the meter, measure the force necessary to depress one of the center belts 1/64-inch for every inch of belt span (see sketch below). For example, a deflection for a 50-inch belt span is 50/64ths, or 25/32-inch. The amount of force required to deflect the belt should compare with the deflection forces noted in the chart on this page. Also notice for V-belts that deflection forces vary from the initial "run-in" values which are greater (reflecting higher run-in tensioning) to the "normal" values for after the run-in period.

MEASURE THE SPAN LENGTH "T" AS SHOWN IN THE SKETCH ABOVE.



**Standard V-Belt Tensioning Deflection Force (Per Single Belt)**

Belt Cross-Section	Smaller Pulley Diameter Range (in.)	Deflection Force	
		Run-in (lbs.) (New Belt)	Normal (lbs.) (Used Belt)
3VX	2.20 - 3.65	7	5
	4.12 - 10.6	8	6
5VX	4.40 - 10.9	18	10 - 14
	11.8 - 16.0	22	12 - 18

**Note:** The force in the table above is shown per a single rib v-belt, for banded v-belts such as for a 2-rib v-belt you must multiply the force in the table for a single v-belt by 2 and for a 3-rib v-belt you must multiply the force in the table for a single v-belt by 3 and so on.

## TROUBLE SHOOTING

**⚠ WARNING** ALWAYS DISCONNECT OR DISENGAGE POWER BEFORE CLEANING, ADJUSTING, LUBRICATING OR SERVICING THIS MACHINE. FAILURE TO FOLLOW THIS RECOMMENDATION MAY RESULT IN SERIOUS PERSONAL INJURY OR DEATH.

**NOTE:** THIS CHART DOES NOT COVER ALL PROBLEMS. CONTACT YOUR DEALERSHIP FOR FURTHER ASSISTANCE.

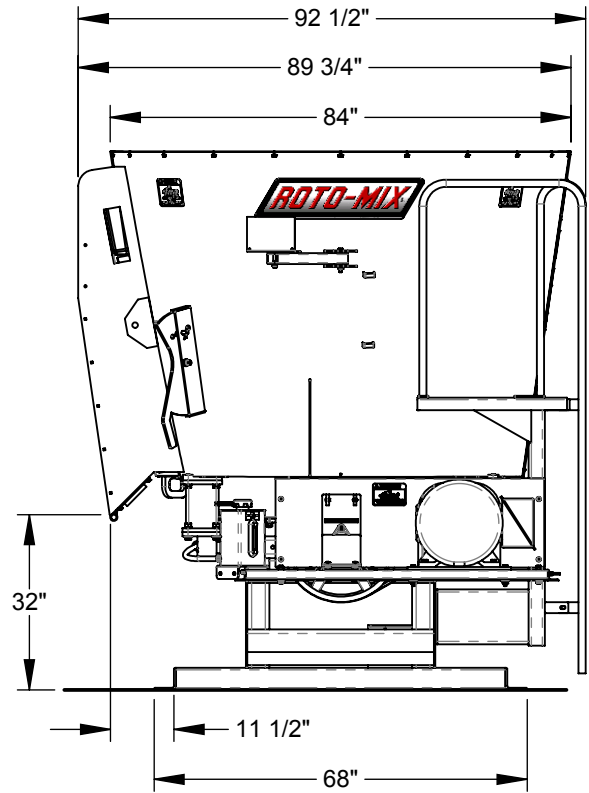
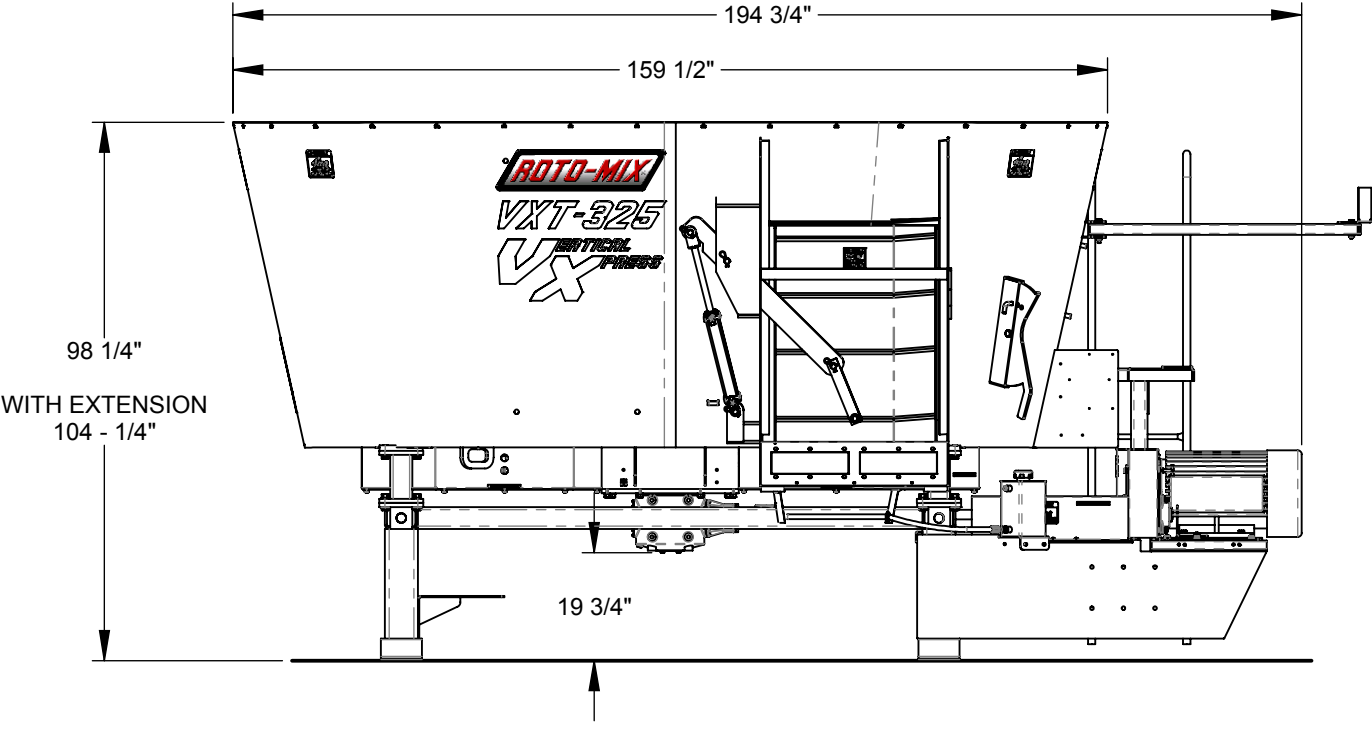
PROBLEM	POSSIBLE CAUSE	POSSIBLE REMEDY
Machine Vibration	Universal Joints Are Out Of Alignment.	Check And Realign.
	Worn Out Bearing.	Replace Bearing.
Auger Drive Chains Jumping Sprocket Teeth	Idler Springs Loose.	Adjust Idlers.
	Worn Sprocket Teeth.	Replace Sprocket.
Auger Drive Chains Breaking	Usually Causes Side Bar Breakage Due To Chain Ridding Up on Sprocket Teeth.	See Possible Remedies To “chains Jumping Sprocket Teeth” Above
	Excessive Loads.	Refer To General Information About Machine Loading
Excessive Bearing Failure	Improper Lubrication	Refer To Lubrication Chart.
	Contamination	Check Seal
	Excessive Loads.	Refer To General Information About Machine Loading.
Mixing quality poor, not thorough.	Batch has high concentration of light weight ingredients and rotates too fast inside tub for thorough mixing.	Extend restrictor plates (dogs) further into tub as instructed on page 16.
	High concentration of long hay, not being torn apart.	Extend restrictor plates (dogs) further into tub as instructed on page 16.
Hay being added to batch, but not being incorporated into mixture.	Hay not getting shredded by mixing action, batch rotating inside tub too fast.	Extend restrictor plates (dogs) further into tub as instructed on page 16.
Too much power being consumed to mix.	Restrictor plates extend too far into tub and retarding rotation of batch.	Move restrictor plates (dogs) away from tub as instructed on page 16.

## VXT 325 STATIONARY VERTICAL MIXER FEATURES & SPECIFICATIONS

MODEL DESCRIPTION	VXT 325
Maximum Load with Hay Ration	6,400 LB.
Maximum Load with Heavy Ration	8,900 LB.
Mixing Capacity cu. ft.	320 CU. FT.
Bushel Mixing Capacity	256
Gear Box	Right Angle
Tub Bottom Thickness	5/8"
Side Wall Thickness	1/4"
Auger Flights	1/2" Thick
Auger Drive Roller Chain	#100
Auger Drive Shafts	4"
Mixer Weight	7,940#
Auger Diameter	66"

**All Dimensions & Specifications are Approximate and Subject to Change Without Notice.**

# VXT 325 STATIONARY DIMENSIONAL SPECIFICATIONS



All Dimensions & Specifications are Approximate and Subject to Change Without Notice.

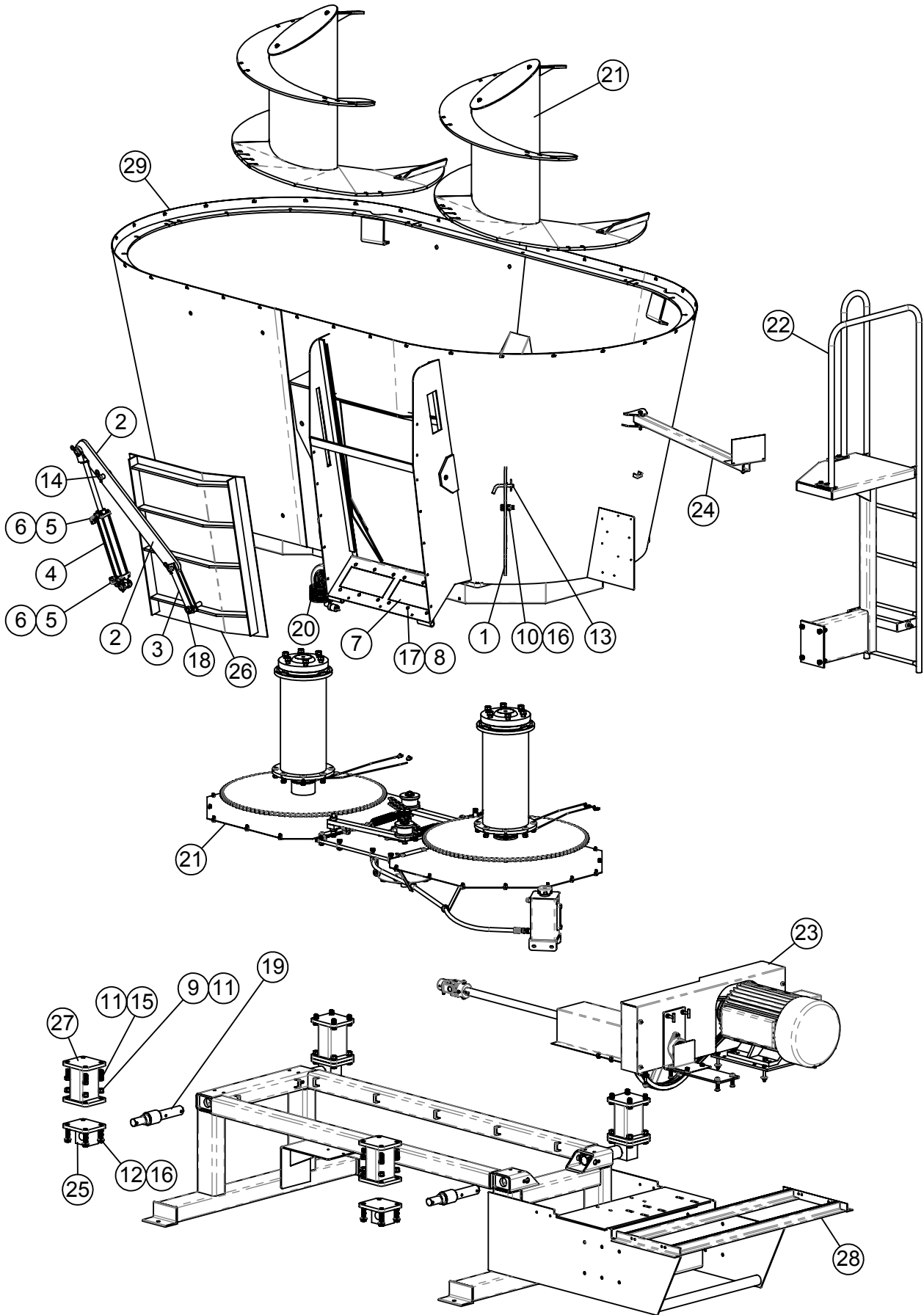
**This Page intentionally left blank.**



# REPAIR PARTS TABLE OF CONTENTS

	PAGE NO.
VXT 325 ASSEMBLY .....	26-27
VXT 325 STATIONARY AUGER ASSEMBLY .....	28-29
VXT 325 STATIONARY AUGER DRIVE ASSEMBLY.....	30-31
VXT 325 ELECTRIC DRIVE ASSEMBLY.....	32-33
VXT 325 DISCHARGE SPOUT .....	34
VXT PLATFORM ASSEMBLY .....	35
VXT 325 RUBBER EXTENSION KIT.....	36

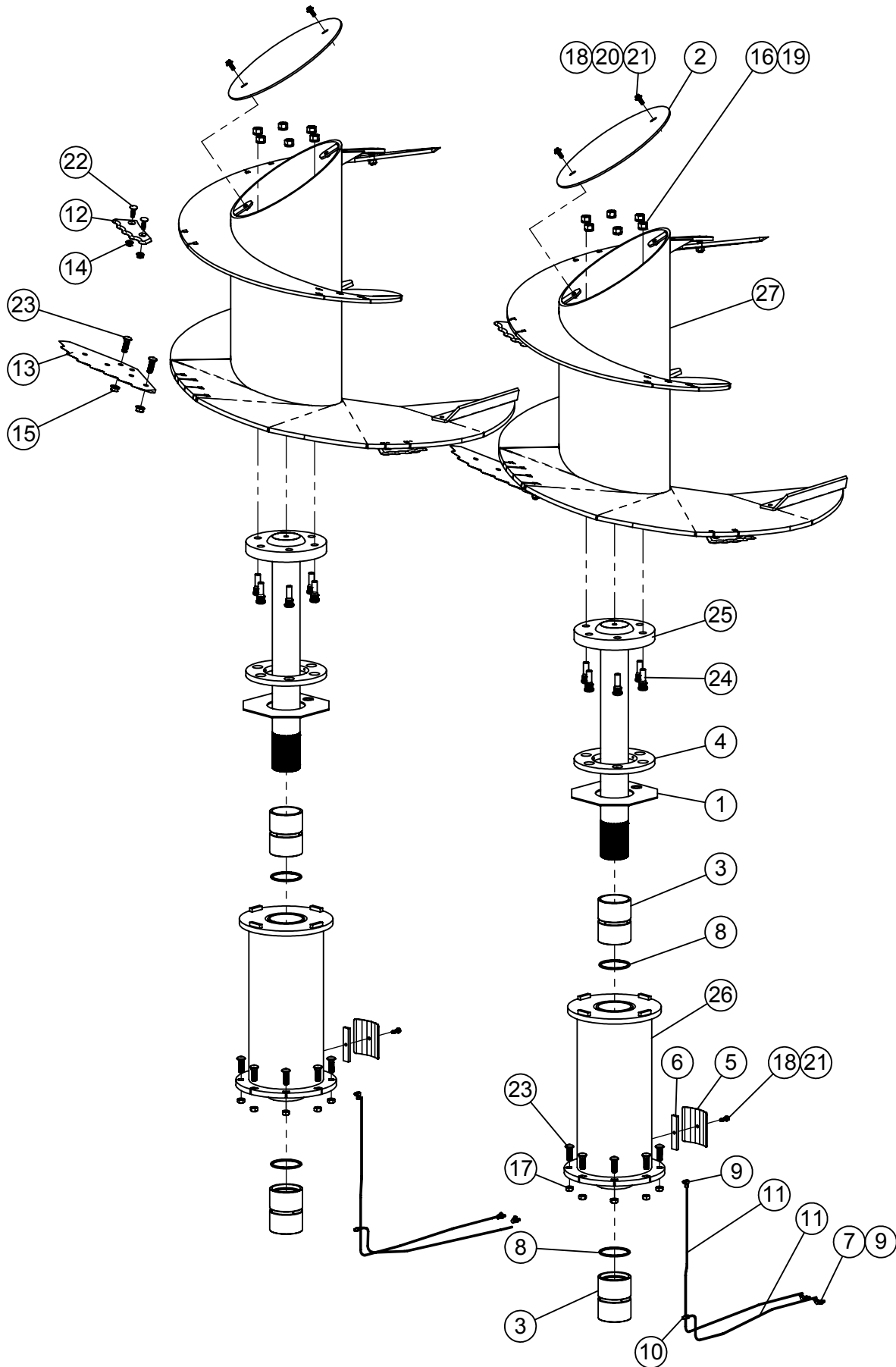
# VXT 325 ASSEMBLY



## VXT 325 ASSEMBLY

ITEM #	PART #	DESCRIPTION	QTY.
1	161086	325/425 TUB KNIFE	2
2	161098	DOOR LIFT ARM 4-1/2" x 39"	1
3	161121	VXT DOOR LIFT STRAP 2" x 12-1/2"	2
4	364058	HYDRAULIC CYLINDER, 2" x 12", 22-1/4 CC	1
5	368007	HYD ADAPTER 3/8"MP x 3/8"FPX 90° .109 orifice	2
6	368115	STRAIGHT ADAPTER 9/16 MOR x 3/8 FPS	2
7	375004	ACRO PLATE MAGNET AM 1500	2
8	400106	HEX NUT, 5/16"-18 SER. FLANGE #5 PLTD	12
9	400212	HEX NUT 3/4"-10 #5 PLTD	16
10	400912	HEX CROWN LOCK NUT 3/4"-10 #5 PLTD	2
11	402012	SPRING LOCK WASHER 3/4" PLTD	32
12	402512	FLAT WASHER 3/4" SAE	16
13	404209	PIN, 5/8" x 4", RECEIVER HITCH	2
14	404211	PIN 1" x 2-3/4", CYLINDER PIN	2
15	405779	HHCS 3/4"-10 x 2" #5 PLTD	16
16	405781	HHCS 3/4"-10 x 2-1/2" #5 PLTD	18
17	407020	CHCS 5/16"-18 x 3/4" #5 PLTD	12
18	412416	COLLAR, SET ASSY	1
19	450822	WEIGH BAR, 2-1/8"	4
20	750129	110VAC HYD POWER UNIT	1
21	760563	425 VXT AUGER DRIVE BDL	1
22	760570	VXT TRK PLATFORM BUNDLE	1
23	760588	VXT FRONT 40 HP 3PH ELEC DRIVE	1
24	770275	425/500/575 TRL IND ARM ASSY	1
25	860087	2-1/8" BAR END BLACK WA	4
26	860338	325 DOOR FRAME WA 34" x 41-13/16"	1
27	860373	RISER BLOCK WA - 9-1/2"	4
28	860430	325 STAT SCALE FRAME WA (2-1/8" BAR FRAME)	1
29	860462RH	325 VXT RH DISCHARGE STAT SHELL WA	1

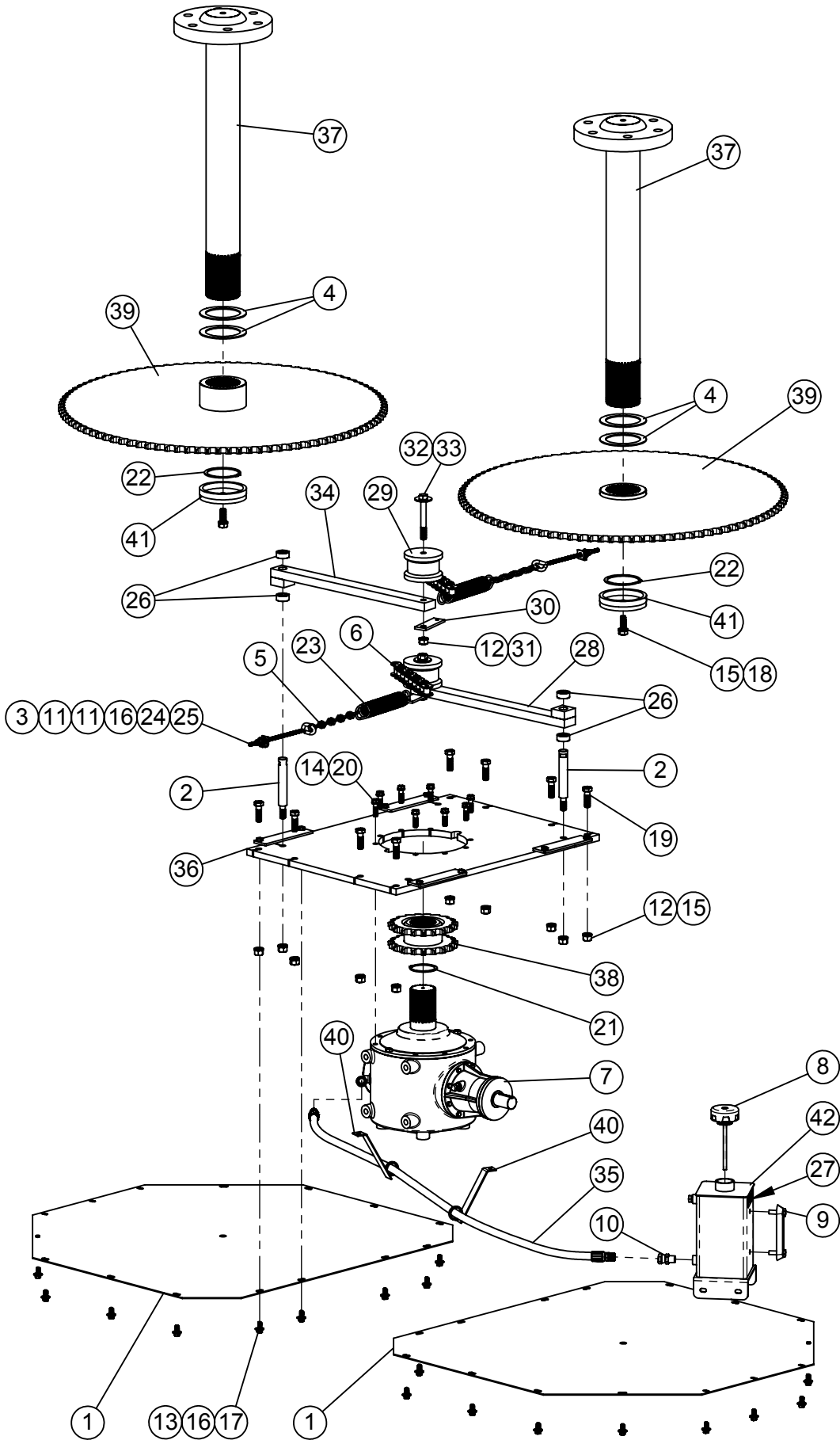
# VXT 325 AUGER ASSEMBLY



## VXT 325 AUGER ASSEMBLY

ITEM #	PART #	DESCRIPTION	QTY.
1	161065	325/425 SS THURST WASHER 11-3/4" x 11-3/4"	2
2	161100	AUGER TUBE CAP 16-1/4" x 19-5/16"	2
3	161118	NYLATRON BEARING 4"IDx4-3/4"OD	4
4	161148	NYLATRON THRUST WASHER 3/4x6-1/2x11-5/8	2
5	161525	COVER PLATE 5 1/8 x 5 1/8	2
6	161526	STAND TUBE BOLT BAR 3/8 x 1 x 5	2
7	310750	GREASE ZERK PLTD 1/8"	4
8	351907	O-RING 3.975"ID x .210"C.S.	4
9	356001	COMPRESSION FITTING 1/8"MP x 3/16", 90°	6
10	356002	COMPRESSION FITTING 1/8" MP x 3/16" STRAIGHT	2
11	356203	Copper Tubing 3/16 OD	4
12	385009	AUGER KNIFE 8", RIGHT HAND (OPTIONAL PARTS)	4
13	385012	KNIFE BLADE 1/2" x 7-1/2" x 18-7/8"	6
14	400114	HEX NUT, 1/2-13 SERRATED FLANGE #5	8
15	400115	FLANGE NUT, 5/8-11 SERRATED	12
16	400312	HEX NUT 3/4"-16 #5 PLTD	12
17	400910	HEX CROWN LOCNUT 5/8"-11 #9 PLTD	16
18	402006	WASHER SPRING LOCK 3/8" MED PLTD	6
19	402012	SPRING LOCK WASHER 3/4" PLTD	12
20	402406	FLAT WASHER 3/8" PLTD	4
21	405654	HHCS 3/8"-16 x 1-1/4" #5 PLTD	6
22	407102	CHCS 1/2"-13 x 1-1/2" #5 PLTD	8
23	407121	CHCS 5/8"-11 x 2" #5 PLTD	28
24	407729	STUD BOLT 3/4" X 2 3/4, W/1" SHOULDER	12
25	860345	VXT AUGER SHAFT WA 4" x 34-3/4"	2
26	860348	VXT AUGER BEARING COLUMN WA	2
27	860350	VXT 325/425 AUGER WA	2

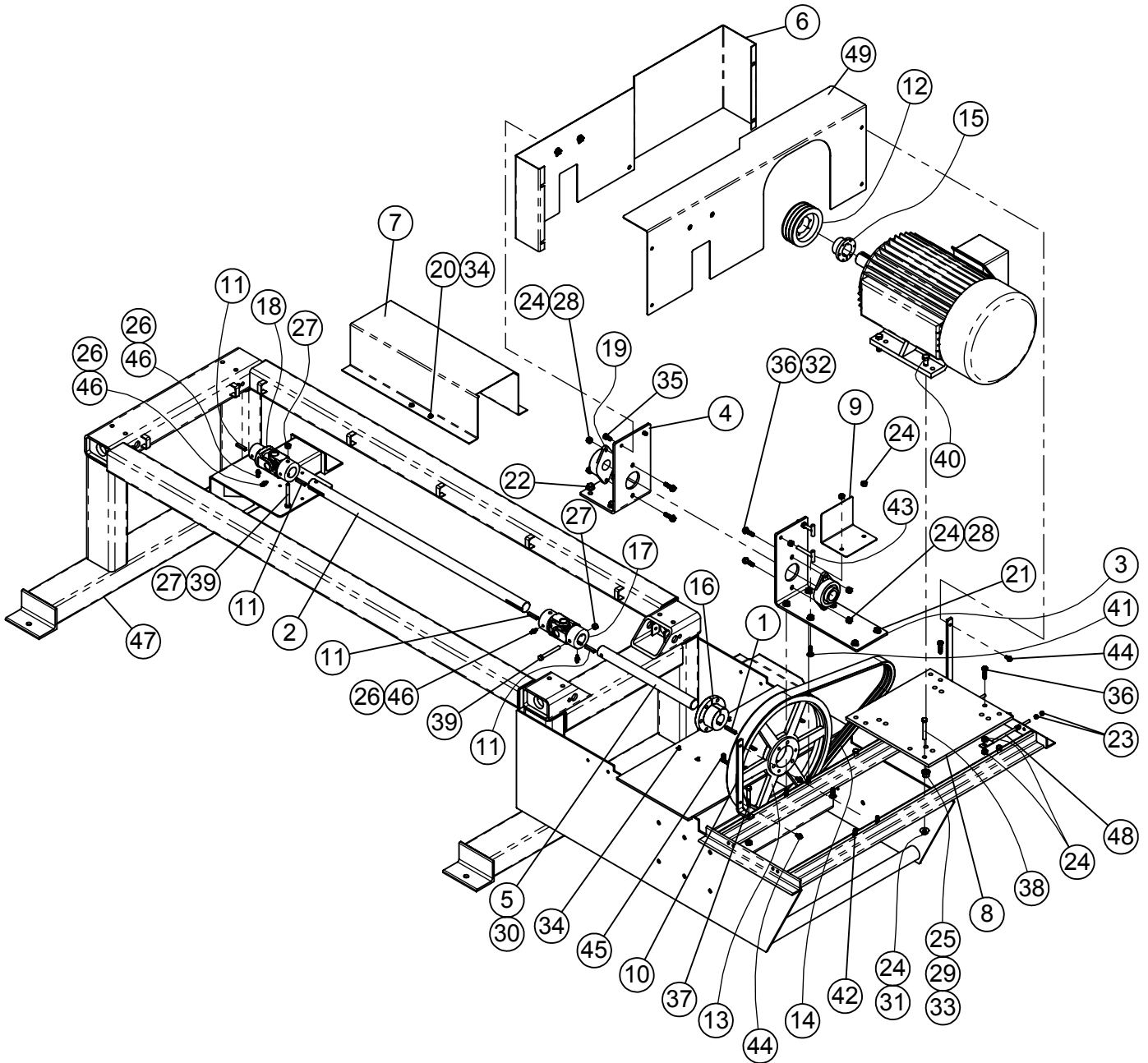
# VXT 325 AUGER DRIVE ASSEMBLY



## VXT 325 AUGER DRIVE ASSEMBLY

ITEM #	PART #	DESCRIPTION	QTY.
1	161077	325/425 CHAIN DRIVE DOOR	2
2	161170	325/425 IDLER PIN	2
3	161226	VXT SPRING GAGE 1" x 1-5/8"	2
4	161581	SPACER	4
5	182584	CHAIN-2/0 PASSING LINK	2
6	321118	Pitch - Complete #100 RC x118	2
7	344071	GB,RT AGL,1.75"IN,3"SPL OUT	1
8	362549	TANK BREATHER 8" DIP STICK	1
9	362555	SIGHT GAUGE 5"	1
10	368111	STRAIGHT ADAPTER 1/2" x 1/2"FP SWIVEL	1
11	400206	HEX NUT 3/8"-16 #5 PLTD	4
12	400210	HEX NUT 5/8"-11 #5 PLTD	11
13	402006	WASHER SPRING LOCK 3/8" MED PLTD	30
14	402008	SPRING LOCK WASHER 1/2" PLTD	8
15	402010	SPRING LOCK WASHER 5/8" PLTD	12
16	402406	FLAT WASHER 3/8" PLTD	32
17	405653	HHCS 3/8"-16 x 1" #5 PLTD	30
18	405753	5/8"-11 x 1 3/4" HHCS #5 PLTD	2
19	405754	HHCS, 5/8"-11 x 2" #5 PLTD	8
20	407819	HHCS M12-1.75 x 45mm 10.9	8
21	409961	SNAP RING 3"x.093" SH300	1
22	409962	SNAP RING 4"x.109" SH400	2
23	410012	Spring Pull 1 3/4" x 7 x .218	2
24	410013	SPRING, 3/4"x1",BLUE,DIE SPRG	2
25	410852	EYE BOLT 3/8" X 8"	2
26	412416	SET COLLAR 1" PLTD	4
27	440954	DECAL, USE MOBIL SYNTHETIC 75W-90	1
28	760584	VXT CHAIN IDLER ASSY	2
29	161595	IDLER BLOCK 4-1/2" OD UHMW	1
30	185622	PULL TAB, 5/8", 4-1/2" LONG	1
31	402110	LOCK WASHER 5/8" EXTERNAL STAR PLTD	1
32	402412	FLAT WASHER 3/4" PLTD	1
33	405764	HHCS #5 Pltd 5/8"-11 x 5"	1
34	872252	IDLER ARM 5/8"BORE, 21 3/4"	1
35	781512	1/2" x 76"HYD HOSE 1/2MPx1/2MP	1
36	860340	VXT GEARBOX MNT PLATE WA	1
37	860345	VXT AUGER SHAFT WA 4" x 34-3/4"	2
38	860358	SPROCKET WA, DS100A19 H x 3"ID SPLINE	1
39	860359	VXT AUGER SPROCKET WA 100C98x5.515"ID	2
40	860369	VXT GB TUBE HANGER WA	2
41	860704	CAP SPACER WELDMENT	2
42	875416	GEARBOX RESERVOIR 6" x 6" x 10"	1

# VXT ELECTRIC DRIVE, 40HP 3PH

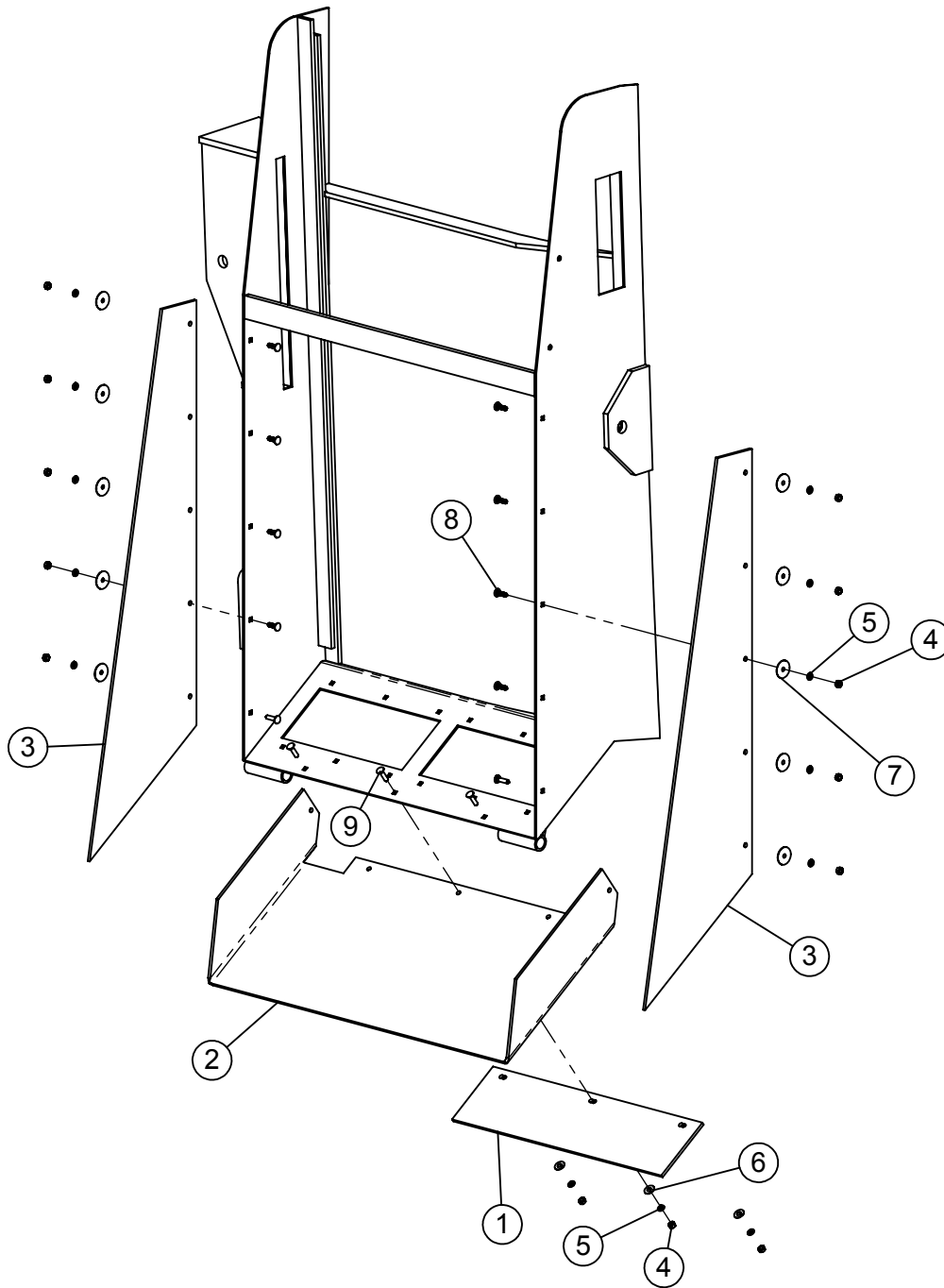




## VXT ELECTRIC DRIVE, 40HP 3PH

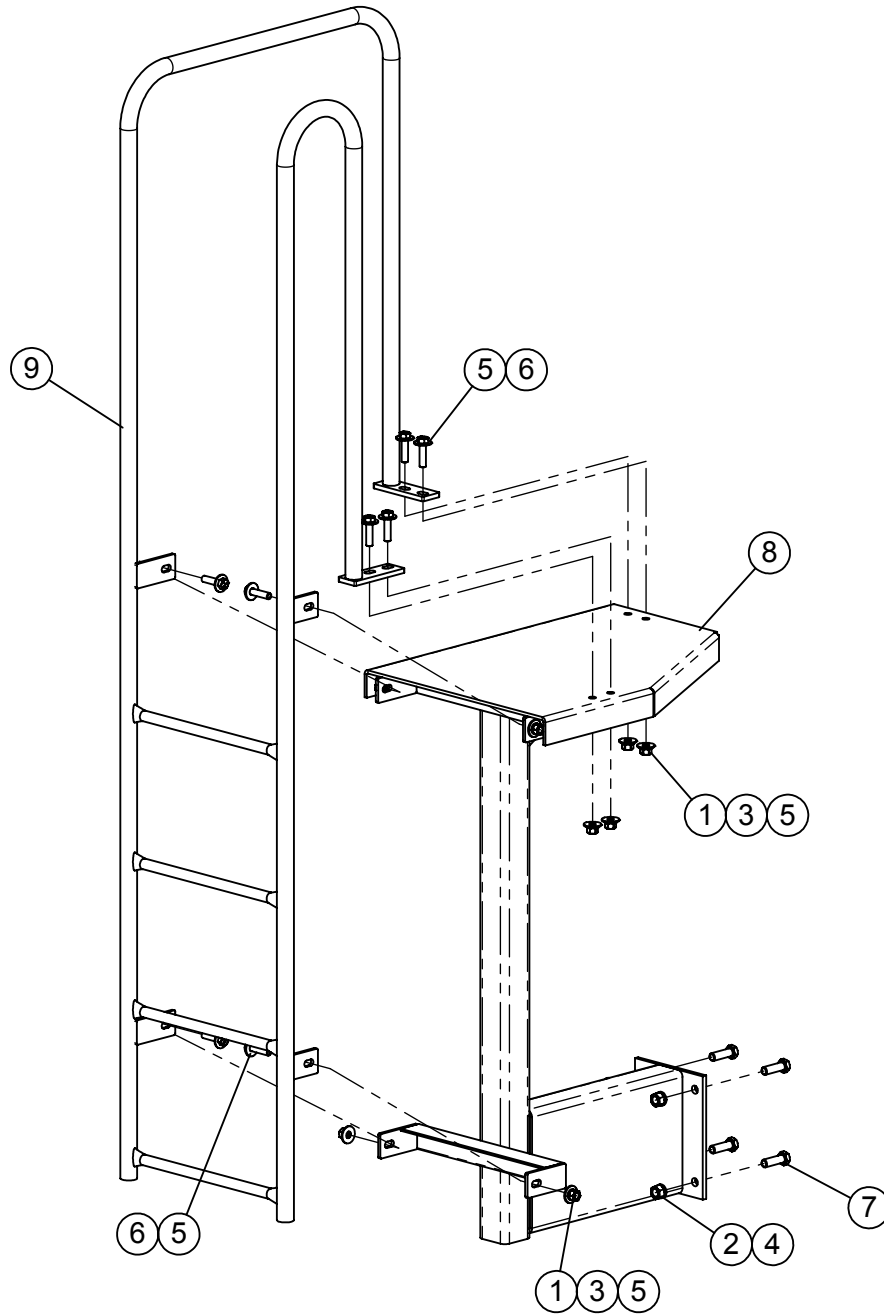
ITEM #	PART #	DESCRIPTION	QTY.
1	140954	KEY 3/8" SQ. X 2-1/4"	1
2	161429	VXT DRIVELINE 1-3/4" x 48"	1
3	161701	FRONT BEARING MOUNT	1
4	161702	REAR BEARING MOUNT	1
5	161703	STATIONARY JACKSHAFT	1
6	161704	REAR BELT SHIELD	1
7	161705	DRIVELINE COVER	1
8	161706	MOTOR MOUNT PLATE	1
9	161710	JACKSHAFT END GUARD	1
10	161723	BRACKET	2
11	185480	KEY 3/8" SQ. X 2"	4
12	324036	5V-3 GRV SHEAVE 6.7" OD SK	1
13	324037	5V-3 GRV SHEAVE 21.2" OD E	1
14	325404	V-BELT, POWER BAND, 3/5VX-900	1
15	336033	2-1/8" SK QD BUSHING - STEEL	1
16	336138	QD BUSHING, E x 1 3/4"	1
17	338590	U-JOINT ASSY, W2400, 1.75 ID x 1.75 ID	1
18	338591	U-JOINT ASSY, W2400, 1.75 ID x 1.50 ID	1
19	340228	BEARING, 1-3/4" FLANGE, 2-BOLT	2
20	400106	HEX NUT, 5/16"-18 SER. FLANGE #5 PLTD	4
21	400114	HEX NUT, 1/2"-13 SERRATED FLANGE #5	10
22	400115	FLANGE NUT, 5/8"-11 SERRATED	4
23	400206	HEX NUT 3/8"-16 #5 PLTD	8
24	400208	HEX NUT 1/2"-13 #5 PLTD	16
25	400210	HEX NUT 5/8"-11 #5 PLTD	4
26	400606	HEX JAM NUT 3/8"-16"	4
27	401108	HEX NUT, 1/2"-13 NYLOC #5 PLTD	2
28	402008	SPRING LOCK WASHER 1/2" PLTD	4
29	402010	SPRING LOCK WASHER 5/8" PLTD	4
30	402405	FLAT WASHER MED PLTD 5/16"	4
31	402408	WASHER, FLAT 1/2" MED PLTD	4
32	402508	FLAT WASHER, SAE, 1/2" ID x 1" OD	4
33	402510	FLAT WASHER 5/8" SAE PLTD	4
34	405628	HHCS 5/16"-18 x 1" #5 PLTD	4
35	405701	HHCS 1/2"-13 x 1" #5 PLTD	2
36	405704	HHCS 1/2"-13 x 1-3/4" #5 PLTD	6
37	405709	HHCS 1/2"-13 x 3" #5 PLTD	2
38	405711	HHCS 1/2"-13 x 3-1/2" #5 PLTD	4
39	405713	HHCS 1/2"-13 x 4" #5 PLTD	2
40	405756	HHCS, 5/8"-11 x 2-1/2" #5 PLTD	4
41	407102	CHCS 1/2"-13 x 1-1/2" #5 PLTD	2
42	407108	1/2"-13 X 3" CARRIAGE BOLT	4
43	407404	T-STRAP BOLT, 1/2"-13 x 3-1/2 LGT, #5 PLTD	2
44	407900	HHCS 3/8"-16 x 3/4" SERRATED #5 PLTD	4
45	407922	HHCS 5/8" x 1 1/2" WHIZ BOLT	4
46	409543	SQ HD SET SCREW CUP, 3/8" x 1"	4
47	860430	325 STAT SCALE FRAME WA (2-1/8" BAR FRAME)	1
48	860431	MOTOR ADJUSTMENT WA 10-3/4"	2
49	860497	SINGLE MOTOR FRONT SHIELD WA	1

# VXT 325 DISCHARGE SPOUT



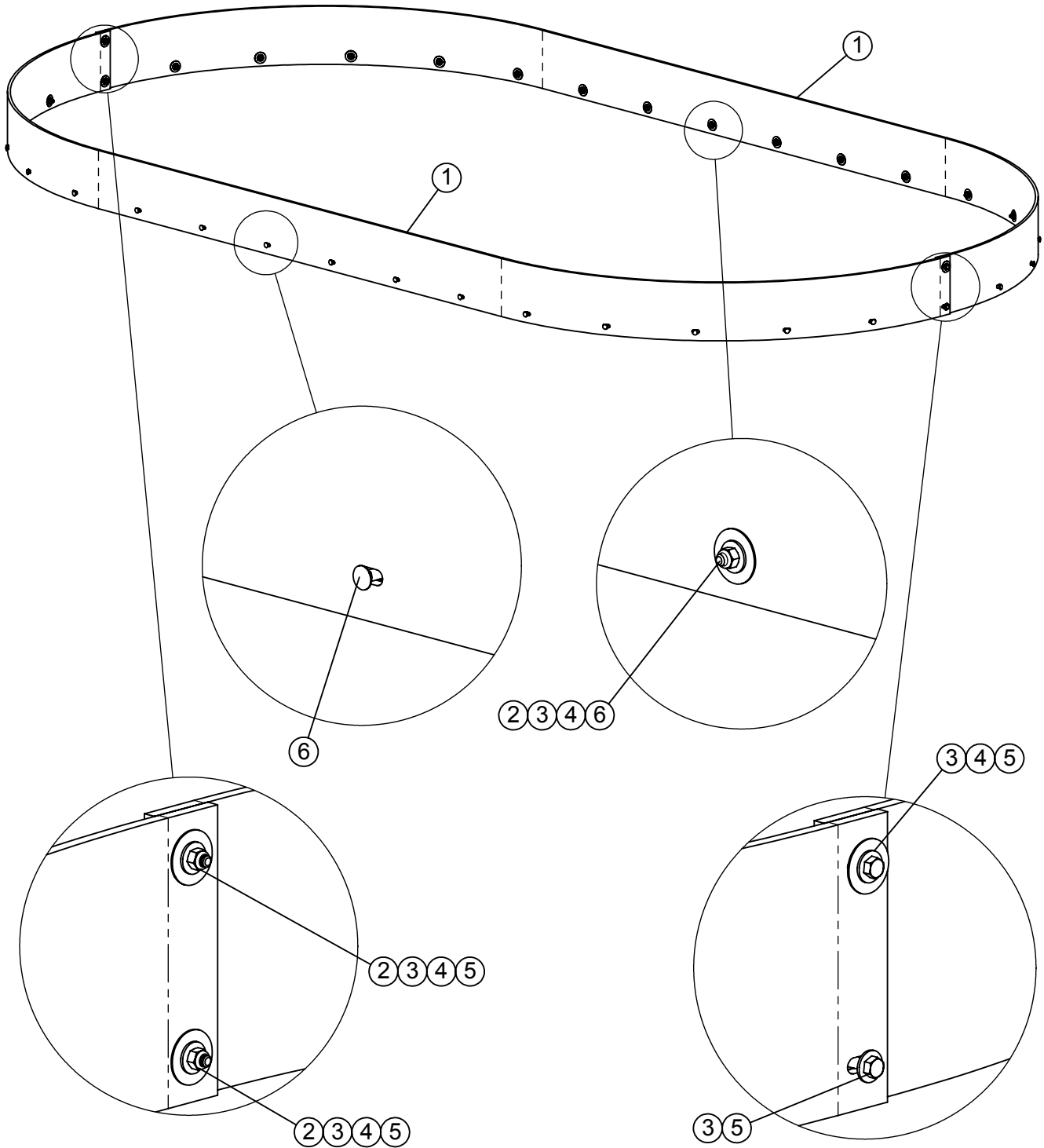
ITEM #	PART #	DESCRIPTION	QTY.
1	161178	325 SPOUT GUSSET 1/4" X 6" x 24-1/2"	1
2	161179	325 VXT SPOUT RUBBER	1
3	161180	325 SPOUT SIDE RUBBER	2
4	400205	HEX NUT 5/16"-18 #5 PLTD	13
5	402005	WASHER 5/16", SPRING LOCK, MED PLTD	13
6	402405	FLAT WASHER MED PLTD 5/16"	3
7	402605	FENDER WASHER PLTD. 5/16"ID x 1 1/2"OD	10
8	407021	CHCS 5/16"-18 x 1" #5 PLTD	8
9	407022	CHCS 5/16"-18 x 1-1/4"	5

# VXT PLATFORM ASSEMBLY



ITEM #	PART #	DESCRIPTION	QTY.
1	400208	HEX NUT 1/2"-13 #5 PLTD	8
2	400310	Hex Nut #5 Pltd 5/8"-18	4
3	402008	SPRING LOCK WASHER 1/2" PLTD	8
4	402010	SPRING LOCK WASHER 5/8" PLTD	4
5	402408	WASHER, FLAT 1/2" MED PLTD	16
6	405705	HHCS 1/2"-13 x 2" #5 PLTD	8
7	405754	HHCS, 5/8"-11 x 2" #5 PLTD	4
8	860388	VXT 425 TRK PLATFORM MNT WA	1
9	860389	VXT TRK PLATFORM LADDER WA	1

# RUBBER EXTENSION KIT 6" - VXT 325



ITEM #	PART #	DESCRIPTION	QTY.
1	161146	VXT325 RUBBER EXT. END - 3/8" x 8" x 208"	2
2	401105	HEX NUT, 5/16"-18 NYLOC #5 PLTD	36
3	402405	FLAT WASHER MED PLTD 5/16"	40
4	402606	FENDER WASHER 3/8" x 1 1/2" PLTD	38
5	405631	HHCS 5/16"-18 x 1-3/4" #5 PLTD	4
6	407022	CHCS 5/16"-18 x 1-1/4"	32

**This Page intentionally left blank.**