



**702-17 & 802-19
MANURE SPREADER
TRUCK UNIT**



**OPERATOR'S MANUAL , MAINTENANCE
AND REPAIR PARTS**

**ROTO-MIX LLC
2205 E. Wyatt Earp
PO Box 1724
Dodge City, Kansas 67801
(620) 225-1142**

©Roto-Mix LLC 2006

INTRODUCTION

Congratulations on the purchase of your new spreader from Roto-Mix. With proper operation and preventative maintenance it will last for years.



This SAFETY ALERT SYMBOL indicates important safety messages in the manual. When you see this symbol, be alert to the possibility of PERSONAL INJURY and carefully read the message that follows.

⚠ WARNING NEVER OPERATE WITHOUT ALL COVERS, SHIELDS AND GUARDS IN PLACE. KEEP HANDS, FEET AND CLOTHING AWAY FROM MOVING PARTS.

Some covers and guards have been removed for illustrative/photographic purposes only in this manual. However, equipment should never be operated in this condition. Keep all shields in place. If shield removal becomes necessary for repairs, replace the shield prior to use.

The Guarantee appears in the front of this book along with the Registration and Inspection Certificate.

For information on ordering repair parts, refer to the Repair Parts section at the back of this book.

The serial number plate is located on the drivers side lower front of the main frame. This number should be recorded on the Registration and Inspection Certificate for your reference and for proper identification of your spreader by Roto-Mix.

You are urged to study this manual and follow the instructions carefully. Your efforts will be repaid in better operation and service as well as a savings in time and repair expense.

Failure to read and understand the machine or the system could lead to serious injury.

If you do not understand the instructions in this manual contact either your dealer or Roto-Mix at Dodge City, Kansas 67801.

This supersedes all previous published instructions.



Limited Warranty Statement

ROTO-MIX LLC warrants to the original purchaser all products manufactured by it to be free from defects in material and workmanship under normal use and service.

ROTO-MIX's obligation under this warranty is limited to repairing or replacing, as the company may elect, free of charge and without charge for installation, at the place of business of a dealer or distributor authorized to handle the equipment covered by this warranty or at a ROTO-MIX facility, any parts that prove, in the company's judgment, to be defective in material or workmanship within one (1) year after delivery to the original purchaser, and still owned by the original purchaser. This warranty shall in no way make ROTO-MIX liable to anyone for personal injuries or damages, loss of time, or expense of any kind either direct or indirect resulting from part failure or defect. This warranty is subject to acts of God, fire and existing conditions of supply and demand, or production, or ability or inability to deliver, or for any other valid reason beyond the reasonable control of ROTO-MIX, to obtain materials, manufactured replacement parts, or make delivery thereof. No distributor, dealer, agent, or ROTO-MIX employee (other than the CEO or President in writing) is authorized to extend any other or further express or implied warranty or incur any additional obligation on ROTO-MIX's behalf in connection with the sale of this product.

If ROTO-MIX, or its duly authorized representative, shall find that such returned part or parts are defective and such defects, or defect, are included in and covered by said warranty, then such defective part or parts shall promptly be replaced without charge to the purchaser, F.O.B. the ROTO-MIX plant.

Product Registration - It is a condition of this warranty that the original purchaser must fill out the warranty card furnished by ROTO-MIX and that it be returned to ROTO-MIX within 10 days of purchase and be recorded in ROTO-MIX's owner file for this warranty to be valid. In the event an owner's card is not on file at the ROTO-MIX office, the warranty period will extend only from date equipment was picked up or shipped from the ROTO-MIX plant.

Maintenance - It is the customer's responsibility to maintain their equipment in accordance with the instructions provided in the Operator's Manual. ROTO-MIX recommends that you keep records and receipts; you may be asked to prove that maintenance instructions have been followed.

Operation - It is the customer's responsibility to operate the equipment only for the purpose for which it was designed and in accordance with all safety and operational recommendations contained in the Operators Manual. If a defect in materials or workmanship occurs, it is the customer's responsibility to cease operating the equipment until authorized repairs are made. **Damage, which occurs from continued operation, may not be covered by this warranty.**

What this Warranty Covers

This warranty covers failures caused by defects in materials or workmanship only.

This Warranty does not cover failures caused by:

- Improper operation
- Natural calamities
- Unauthorized modifications
- Unauthorized repairs
- Use of Non ROTO-MIX parts
- Neglected maintenance
- The use of PTO Shaft Adaptors
- Usage contrary to the intended purpose of the product

This Warranty does not cover replacement of Wear or Maintenance Items including, but not limited to.

- Lubricants
- Filters
- Hoses
- Tires
- Augers
- Wipers
- Chains
- Idlers
- Batteries
- Blades
- Belts

This Warranty does not cover:

- Pickup and delivery of the equipment
- Service Calls or Travel Time to and from sites
- Rental of replacement equipment during repair period
- Products that have been declared a total loss and subsequently salvaged
- Overtime labor charges
- ROTO-MIX is not responsible and will not be liable for damage caused to persons or property, commercial loss, loss of time or production, loss of use by reason of the installation or use of ROTO-MIX products or their mechanical failure.

Right to Make Changes

ROTO-MIX reserves the right to make any changes to a ROTO-MIX product at any time without incurring any obligation with respect to any product previously ordered, sold or shipped, with or without notice.

Parts Warranty

ROTO-MIX warranties replacement parts against defects in materials or workmanship for a period of 90 days or the remainder of the product warranty, whichever is longer. Remedy for defective replacement parts for units that are beyond the original product warranty, will be limited to replacement of the failed part. Failures that are due to damage, improper installation, lack of maintenance or improper operation will not be covered.

ROTO-MIX 2205 East Wyatt Earp Blvd., Dodge City, KS 67801 (620) 225-1142 Fax: (620) 225-6370

TABLE OF CONTENTS

DESCRIPTION	PAGE NO.
Introduction	2
Warranty	3
Table Of Contents	4
Safety-Spreader	5
Safety Decals	5
Spreader Safety	6
Safety Decal Care	8
Principle of Operation	9
Pre Operation Check List	9
Highway and Transport Operation	9
Operation	10
Loading	10
Unloading	10
Spread Pattern	12
Storage and Cleaning	12
Maintenance	13
Lubrication	13
Bearings	13
Drive Chain Planetary Gearbox	13
Belt Maintenance.....	13
Rear Gate Cylinders.....	13
Hydraulic System	14
Adjustments	14
Sliding Gate Scrapers	14
Drive Chain Slack (With Belleville Washer Take-up)	16
Drive Chain Slack (With Urethane Spring Take-up)	16
Rear Gate Scrapers	16
Adjust Spread Pattern	17
Specifications	18
Dimensions.....	19
Repair Parts	21

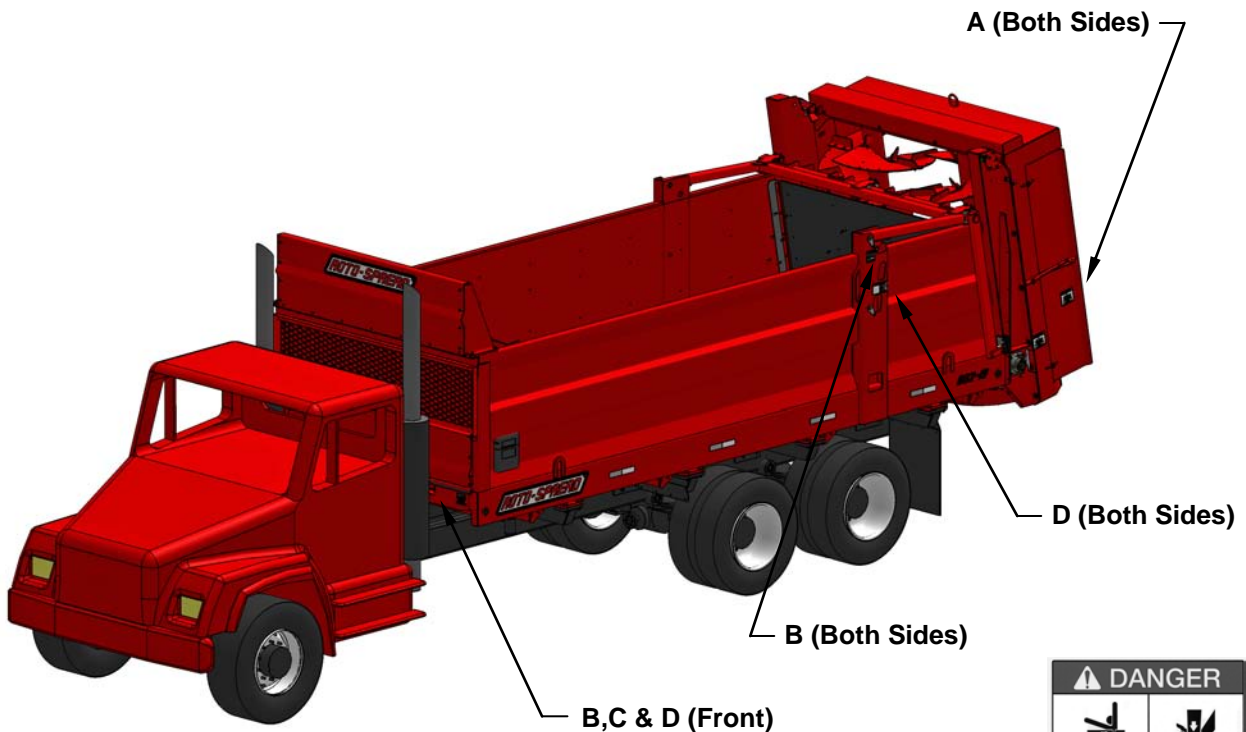
SAFETY - SPREADER

A brief definition of signal words that may be used in this manual:

⚠ DANGER Indicates an imminently hazardous situation that, if not avoided, will result in death or serious injury.

⚠ WARNING Indicates a potentially hazardous situation that, if not avoided could result in death or serious injury, and includes hazards that are exposed when guards are removed.

⚠ CAUTION Indicates a potentially hazardous situation that, if not avoided may result in minor or moderate injury.



NOTE: Complete decal kit part number for 702-17 is 630025, for 802-19 is 630016



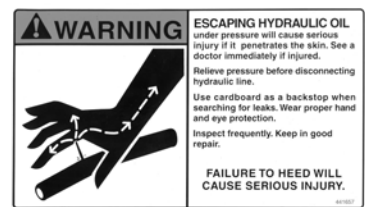
Decal B. 440833



Decal A. 440827



Decal C. 440801



Decal D. 441657

⚠ CAUTION READ ALL SIGNS ON THE MACHINE AND IN THIS MANUAL. REPLACE ANY LOST OR DAMAGED SIGN BY ORDERING THE PART NUMBERS SHOWN ON THE SAFETY DECAL PAGE.

SPREADER SAFETY

CAUTION

Do not operate your spreader until you have read this Owner's Manual, and understand the danger associated with its operation.

This spreader is comprised of rotating drive shafts and rotating beaters. Any exposure to these spreader components can result in serious personal injury or death.

Study the safety decal page and understand where the danger points are.

CAUTION

THERE ARE INHERENT HAZARDS ASSOCIATED WITH THE OPERATION OF YOUR SPREADER.

FOR YOUR SAFETY:

- Do Not Operate, Service, Inspect Or Otherwise Handle This Equipment Unless You Have Read The Owner's Manual And Have Been Properly Trained In Its Intended Usage.
- Do Not Attempt To Operate This Equipment Under The Influence Of Drugs Or Alcohol.
- Do Not Allow Personnel Other Than The Qualified Operator Near The Machine.
- Require All Personnel Who Will Operate This Machinery Or Perform Service, To Read And Understand The Safe Operating Practices And Safety Precautions In This Manual.
- Do Not Operate Until All Shields, Covers And Guards Are In Place.
- Do Not Allow Children Or Inexperienced Persons To Operate This Machine.
- Keep Hands, Feet And Clothing Away From Power Take-Off Shaft.
- Loose Or Floppy Clothing Should Not Be Worn By The Operator. Wear Close Fitting Clothing.
- Stop The Engine And Be Sure PTO Drive line Is Stopped Before Making Adjustments, Connections, Or Cleaning Out PTO Driven Equipment.
- Do Not Climb On Or Enter Machine While In Operation.
- Do Not Allow Riders On The Spreader.
- Rotating Parts Can Crush Or Dismember Causing Personal Injury Or Death.
- Rotating Parts Can Entangle Or Strike People, Resulting In Personal Injury Or Death.
- Operate The Spreader From The Operator's Seat Only.
- Clear The Area Before Equipment Start Up.
- Do Not Go Near The Spreader Beaters While Machine Is Operating.

FAILURE TO HEED MAY RESULT IN SERIOUS PERSONAL INJURY OR DEATH.

- Stay Clear Of Rotating Drive lines.
- Entanglement In Rotating Drive line Can Cause Serious Injury Or Death.
- Do Not Exceed Load Capacity Of The Spreader (See Specifications).
- Do Not Operate On Steep Slopes As Overturn May Result. Operate Up And Down (Not Across) Intermediate Slopes. Avoid Sudden Starts And Stops. Pick The Most Level Possible Route When Transporting Across Fields. Avoid The Edges Of Ditches Or Gullies And Steep Hillsides.
- Use Caution When Traveling Over Uneven Terrain And When Approaching Stops.
- Avoid Overhead Wires Or Other Obstacles. Contact With Overhead Lines Could Cause Serious Injury or Death.
- As A Precaution, Always Recheck The Hardware On Spreader Following Every 100 Hours Of Operation. Correct All Problems. Follow The Maintenance Safety Procedures.

⚠ CAUTION

THERE ARE ADDITIONAL HAZARDS ASSOCIATED WITH THE SERVICE AND MAINTENANCE OF YOUR SPREADER.

FOR YOUR SAFETY:

- Always Wear Eye Protection When Servicing Spreader.
- Disengage Power Take-Off And Remove Keys From Truck Before Servicing Spreader.
- Do Not Attempt To Clean, Oil Or Adjust Spreader While It Is In Motion.
- Stop The Engine And Be Sure Spreader Is Stopped Before Making Adjustments, Connections, Or Cleaning Out Equipment.
- Make Sure There Is Plenty Of Ventilation. Never Operate The Engine Of The Vehicle In A Closed Building. The Exhaust Fumes May Cause Asphyxiation.
- Before Working On The Spreader, Stop The Vehicle, Set The Brakes, Disengage The PTO And All Power Drives, Shut Off The Engine And Remove The Ignition Keys.
- Inspect When First Delivered And Regularly Thereafter; That All Connections And Bolts Are Tight And Secure Before Operating.
- Retighten All Wheel Bolts After The First Hour Of Operation. Check Periodically Thereafter.
- Maintain Proper Tire Air Pressure At All Times.
- Be Certain All Moving Parts On Attachments Have Come To A Complete Stop Before Attempting To Perform Maintenance.
- Before Entering Mixing Chamber Or Servicing Spreader, Disconnect Main Power Source And Lock The Disconnect Device In Off Position To Prevent Accidental Start-Up.

FAILURE TO HEED MAY RESULT IN SERIOUS PERSONAL INJURY OR DEATH.

- Do Not Work Under A Spreader Without Supporting With Suitable Support Stands. Always Use A Safety Support And Block The Wheels. Never Use A Jack To Support The Machine.
- Do Not Work Under A Spreader Without Blocking The Wheels To Prevent Rolling.
- A Fire Extinguisher And First Aid Kit Should Be Kept Readily Accessible While Performing Maintenance On This Spreader.
- Escaping Hydraulic Fluid Under Pressure Can Penetrate The Skin Causing Serious Injury Or Death.
- Avoid Hydraulic Hazard By Relieving Hydraulic Pressure Before Disconnecting Hydraulic Or Other Lines.
- Tighten All Connections Before Applying Pressure.
- Search For Hydraulic Leaks With A Piece Of Cardboard. Protect Hands And Body From High Pressure Fluids. Never Use Your Hands To Locate Hydraulic Leaks On Attachments.
- Replace All Shields And Guards After Servicing And Before Moving.
- Never Replace Hex Bolts With Less Than Grade Five (5) Bolts Unless Otherwise Specified.

REMEMBER:

Your best assurance against accidents is a careful and responsible operator. If there is any portion of this manual or function you do not understand, contact your dealer or the ROTO-MIX plant.

Safety Decal Care

1. Keep safety decals and signs clean and legible at all times.
2. Replace safety decals and signs that are missing or have become illegible.
3. Replaced parts that displayed a safety sign should also display the current sign.
4. Safety decals or signs are available from your dealer or the ROTO-MIX manufacturing plant.
5. How to Install Safety Decals:
 - A. Be sure that the installation area is clean and dry.
 - B. Decide on the exact position before you remove the backing paper.
 - C. Remove the smallest portion of the split backing paper.
 - D. Align the decal over the specified area and carefully press the small portion with the exposed sticky backing in place.
 - E. Slowly peel back the remaining paper and carefully smooth the remaining portion of the decal in place.
 - F. Small air pockets can be pierced with a pin and smoothed out using the piece of decal backing paper.

FAILURE TO HEED MAY RESULT IN SERIOUS PERSONAL INJURY OR DEATH.

PRINCIPLE OF OPERATION

Two vertical spinning beaters at the rear of the spreader expel manure in a uniform spread pattern. Each beater is driven by a hydraulic motor. A PTO driven hydraulic power supply on the spreader provides power to the beaters. The hydraulic pump is two stage thereby supplying independent power to each beater motor.

A wide heavy duty belt covers the box floor. At the front of the spreader, this belt is attached to a sliding gate. At the rear, this belt goes around a belt idler pulley and on the lower side is connected to a drive chain. At the front of the spreader, this chain is driven by a hydraulic motor driving a planetary gear box and sprocket that is powered by the truck hydraulic system. Driving the belt toward the rear of the spreader pulls the sliding gate rearward to move the load toward the beaters. A manually adjustable flow control in the drive chain motor circuit regulates the speed the gate moves.

An end gate at the rear of the spreader is raised and lowered by two hydraulic cylinders, powered by the truck hydraulic system. This gate must be lowered during loading to prevent packing of the material into the beaters and to help prevent leakage during transport.

PRE OPERATION CHECKLIST

1. Carefully study and understand this manual.
2. Do not wear loose-fitting clothing, which may catch in moving parts.
3. Always wear protective clothing *and* substantial shoes.
4. Keep wheel lug nuts or bolts tightened to specified torque.
5. Give the unit a visual inspection for any loose bolts, worn parts or cracked welds, and make necessary repairs. Follow the maintenance safety instructions included in this manual.
6. Check to see that no obstructions are present in the spreader prior to start up.
7. Be sure that there are no tools lying on or in the spreader.
8. Do not use the unit until you are sure that the area is clear, especially children and animals.
9. The ball valve in the suction line must be open prior to engaging PTO (handle parallel with valve housing).
10. Because it is possible that this spreader may be used in dry areas or the presence of combustibles, special precautions should be taken to prevent fires and fire fighting equipment should be readily available.
11. Don't hurry the learning process or take the unit for granted. Ease into it and become familiar with your new spreader.
12. Practice operation of your spreader and its attachments. Completely familiarize yourself and other operators with its operation before using.
13. Do not allow anyone to ride on the inside or the outside of the spreader unit at any time.

HIGHWAY AND TRANSPORT OPERATION

1. Adopt safe driving practices.
2. Always drive at a safe speed relative to local conditions and ensure that your speed is low enough for an emergency stop to be safe and secure. Keep speed to a minimum.
3. Reduce speed prior to turns to avoid the risk of overturning.

4. Avoid sudden uphill turns on steep slopes.
5. Do not drink and drive.
6. Comply with state and local laws governing highway safety.
7. Plan your route to avoid heavy traffic.
8. Be a safe courteous driver. Always yield to oncoming traffic in all situations, including narrow bridges, intersections, etc.
9. Be observant of bridge loading ratings. Do not cross bridges rated lower than the gross weight at which you are operating.
10. Watch for obstructions overhead and to the side while transporting.
11. Make allowances for increased length and weight of the spreader when making turns, stopping the unit, etc.

OPERATION

LOADING

Park the spreader for loading. Put the truck in PARK or NEUTRAL and apply the parking brake.

Make sure the sliding front gate is all the way to the front of the spreader and close the hydraulic rear gate before loading.

It is unlawful to allow any manure spillage to occur on public roadways. Be sure rear gate is fully closed and sliding gate scrapers are adjusted so no liquid leakage occurs. Do not heap load such that manure is allowed to fall off spreader during transporting on roadways.

Load the spreader. The moisture content will determine how full it can be loaded. See SPECIFICATIONS for capacity. Solid manure can generally be loaded level to slightly heaped. High moisture slurries are heavier and loading may be limited.

UNLOADING - RUNNING YOUR SPREADER

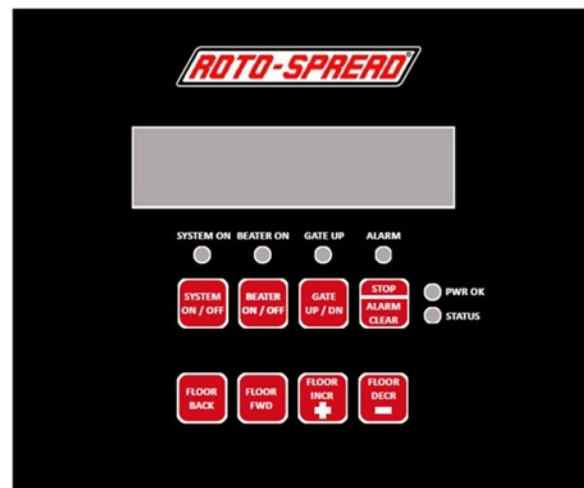
1. Start the truck, and engage the PTO

2. PRESS SYSTEM ON
TO START

Press the **SYSTEM ON/OFF** button.
The SYSTEM ON light will turn on.

3. PRESS BEATER ON
TO START BEATERS

Press the **BEATER ON/OFF** button.
The BEATER ON light will turn on and the beaters will start turning.



4.

PRESS GATE UP
TO OPEN GATE

Press the GATE UP/DN button.

A beeper will sound as the rear gate rises.

When the gate is up, the beeper will stop and the GATE UP light will turn on.

5.

OK TO SPREAD
PRESS FLR BCK PB

Press the FLOOR BACK button.

The floor will start moving towards the beaters. The screen will read:

SPREADING
PRESS FLR BCK PB

After a few seconds, it will change:

Beater RPM	→	R: 0 0 FLR
Beater Pressure	→	P: 5828 5828 25%

A. Adjust the speed of the floor by pressing the **FLOOR INCR (+)** and the **FLOOR DECR (-)** buttons. The FLR percent value on the screen will change:

R:	0	0	FLR
P:	5828	5828	26%

B. Stop the floor by pressing the **STOP/ALARM CLEAR** button. To restart the floor motion press the **FLOOR BACK** button.

OK TO SPREAD
PRESS FLR BCK PB

C. When the floor reaches the back limit, an alarm notification will appear on the screen and the control unit will start beeping:

FAULT DETECT
FLOOR STOPPED!

To clear the alarm press the **STOP/ALARM CLEAR** button.

6.

OK TO SPREAD
PRESS FLR BCK PB

Press the FLOOR FWD button.

When the button is pressed the screen will read:

FLOOR FORWARD
FLR SPEED = 100%

The floor will come towards the truck cab. The beaters will ramp down to a halt and the BEATER ON light will turn off. When the floor reaches the front limit, the rear gate will lower.

The screen will read:

PRESS BEATER ON
TO START BEATERS

7. Repeat the cycle of steps 3 to 6 as needed. When you are done:

Press the SYSTEM ON/OFF button.

Shut down the PTO and the truck.

NOTE: At the end of the day, clean the belt by running it forward and back several times. This will help smooth out any larger clumps of material left on the belt top or on the inside of the belt, which if left on the belt could damage the belt and roller the next time the spreader is in operation, especially during freezing weather.

The “wings” may be adjusted to change the width of the spread pattern. Normally a “mid position” setting is a good place to start. (Note “wings” may be removed if desired for close quarter operation in pens”.

If unloading semi-liquid material the rear gate may be raised in incremental amounts to control the rate of discharge.

NOTE!

BEFORE MOVING THE FRONT GATE, THE REAR GATE MUST BE RAISED COMPLETELY TO PREVENT DAMAGE TO THE FRONT GATE.

Unit is equipped with a beater stall warning horn. The intensity of the horn can be adjusted by turning a “muffler” on the face of the horn. Intermittent sounding of the horn during operation is normal. If the horn sounds continuously the belt speed dial should be reset to a lower number.

Vary belt speed with the consistency of the material being spread. A lower setting might be desired for sticky or frozen material. A higher setting for dry and light material.

Spread Pattern

The spread pattern is affected by the speed of the rotating beaters. The two beater hydraulic motors are powered independently by a two stage hydraulic pump on the spreader. This pump is powered by the truck PTO. The spreader is designed to give a uniform spread pattern when the truck engine is operated at 1500 - 2100 RPM for typical materials. Adjustment of the beater speed and spread pattern is regulated by the engine speed.

STORAGE AND CLEANING

TURN OFF ALL POWER DURING CLEANING AND INSPECTION. DO NOT USE POWER TO MOVE ANY COMPONENTS OR TO DISCHARGE MATERIAL WHILE CLEANING OR INSPECTING.

⚠ WARNING SET PARKING BRAKE & REMOVE IGNITION KEY BEFORE CLEANING, ADJUSTING, LUBRICATING, OR SERVICING THIS MACHINE.

1. The spreader must be thoroughly cleaned for extended storage. Manure is acidic and will damage paint and cause rusting of metal components.
2. Allow the spreader to completely unload.
3. Return the sliding gate to the front of the spreader.
4. To clean the spreader, raise the rear gate.
5. Hose off manure from the outside and inside of the spreader. Completely clean manure from moving mechanisms such as the beaters, belt pulley, sliding gate, chain drive and rear gate. Remove accumulation in confined areas or pockets that trap manure.
6. Avoid directing high pressure spray directly on bearings, seals and flow control valve.
7. Keep high pressure spray moving on painted surfaces. Sustained spray on cracks or scratches in paint can result in paint peeling.
8. Allow machine to dry.
9. Lower rear gate completely down before storing spreader.
10. Inspect the spreader for loose connections, damaged hydraulic hoses or connections and for other damaged components. Repair if necessary so the spreader is ready for future operation.

MAINTENANCE

⚠ WARNING APPLY THE PARKING BRAKE, TURN OFF ENGINE AND REMOVE IGNITION KEY BEFORE CLEANING, ADJUSTING, LUBRICATING OR SERVICING THIS MACHINE.

READ THE FOLLOWING BEFORE WELDING ON THIS MACHINE

1. When welding on your spreader, do not allow the current to flow through the ball bearings or the roller chains. Ground directly to the item being welded.
2. The alternator battery & spreader controller on the truck should always be disconnected before welding on the spreader.

LUBRICATION

Bearings

(See figure 1)

Grease 2 upper beater bearings and 2 wing pulley bearings every 10 hours of operation with 2 pumps of grease.

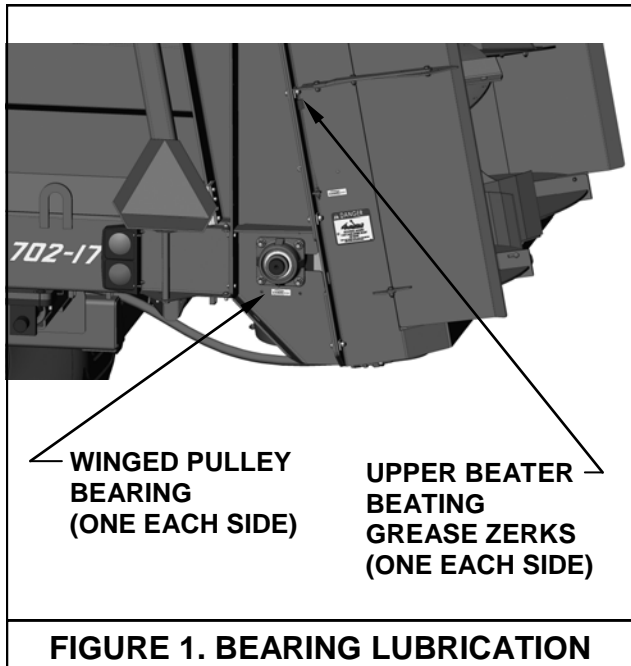


FIGURE 1. BEARING LUBRICATION

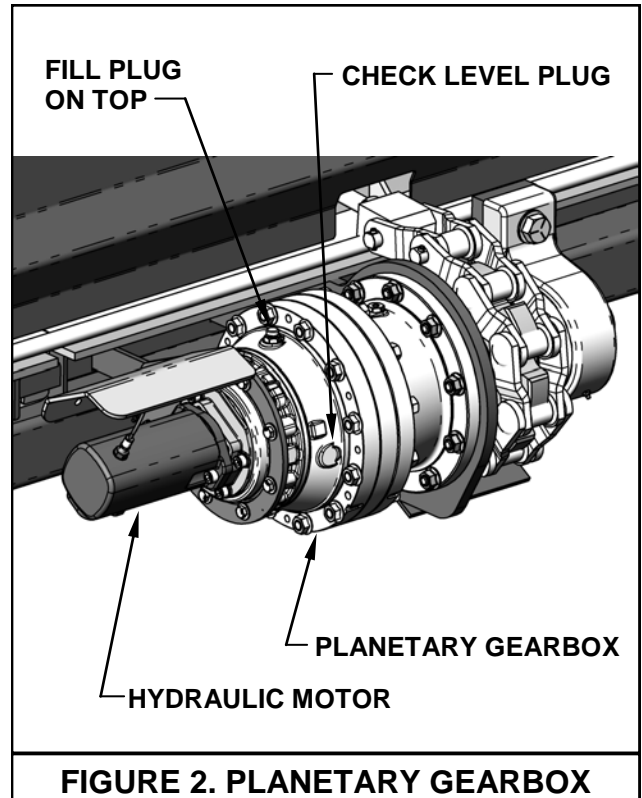


FIGURE 2. PLANETARY GEARBOX

PLANETARY GEARBOX

(See figure 2)

Oil Specification: Mobil Delvac Synthetic Gear Oil 75W-90. There is a check plug half way up on the gearbox. Maintain the oil level to this check plug. Fill plug is located on the top of the gearbox.

BELT MAINTENANCE

Clean the belt roller when needed, so that material does not build up inside roller.

Clean bottom side of belt below frame so that material does not pack into roller and damage belt and roller. This maintenance procedure is especially important during freezing weather.

REAR GATE LIFT CYLINDERS

Clean out around rear gate lift cylinders daily. Material that is left around cylinders can become solid and damage cylinders when they are activated.

HYDRAULIC SYSTEM

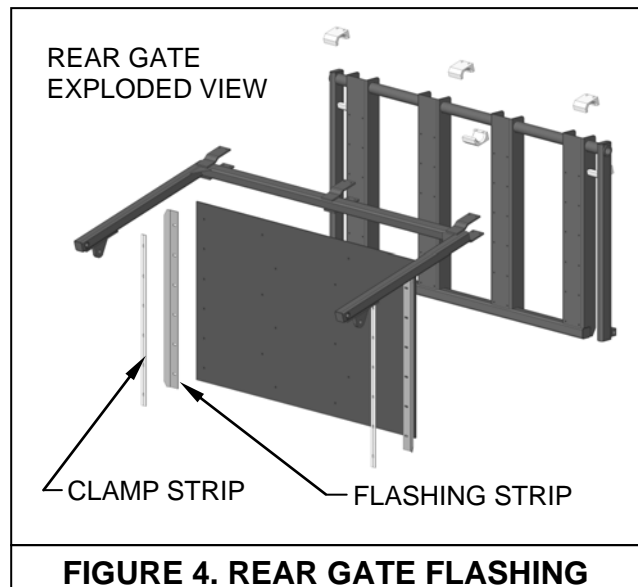
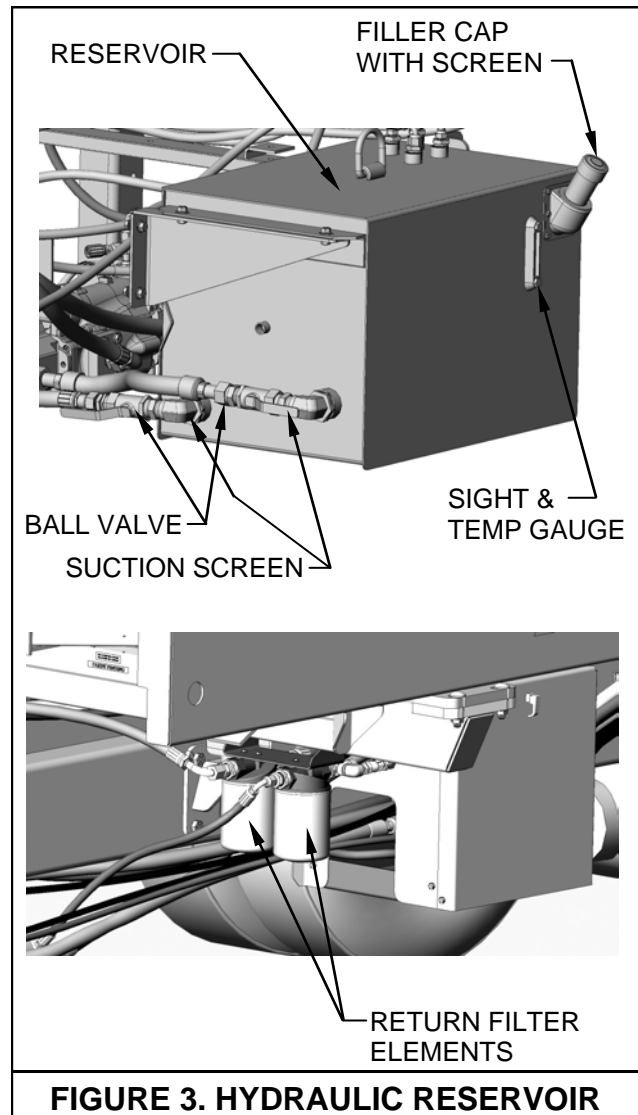
(See figure 3)

1. Oil Specification: CITGO TRANSGARD TRACTOR HYDRAULIC FLUID - Material Code 633310001 .
2. Capacity: 60 gallon.
3. Maximum allowable operating temperature 240°F.
4. Check the oil level in the reservoir daily. It should be maintained 1" from the top of the sight gauge when cold.
5. Oil is added through a filter screen inside the filler neck. Before filling, remove the screen, inspect, clean and replace if required. After replacing screen add oil to proper level.
6. Carefully clean dirt from the return filter head and element. Replace the filter element every 500 hrs of operation.
7. Drain reservoir and refill with new oil every 2000 hrs or annually, whichever occurs first. If the oil becomes contaminated and appears milky colored, replace immediately.
8. Every 100 hrs of operation, inspect all hydraulic hoses, hose connections, pump seals and motor seals for leakage. Tighten loose connections and replace damaged components.
9. A ball valve is provided at the bottom of the reservoir where the suction hose is connected. Turn this valve off to service hydraulic components. This prevents draining of the reservoir, however it is necessary to catch the oil that drains from disconnected hoses into a suitable container for proper disposal. Always check and refill the reservoir as required when servicing is completed.

Rear Gate Flashing

(See figure 4)

1. Swinging gate flashing strips are clamped to both vertical ends of the rear gate frame. These strips must bear against the vertical box sides to minimize leakage.
2. To adjust, loosen the six 3/8" carriage bolts clamping the flashing.
3. Move the flashing strips so they contact against the box wall and retighten bolts.



Sliding Gate Drive Chain Slack (With Belleville Spring Washer Take-up)

(See figure 5)

1. To adjust the floor drive chain, run the sliding gate all the way to the rear of the spreader until it stops.
2. Remove the front panel of the sliding gate.
3. A threaded adjuster rod is provided where the drive chain attaches to the sliding gate. It is factory preset, but may require adjustment with usage.
4. Loosen the two 1" hex nuts on the end of the threaded rod. Tighten the inner nut until the forty eight Belleville washers are almost fully compressed (approximately 5-1/4"). Tighten the outer nut against the inner to lock the adjustment.
5. Replace the front panel.

NOTE: The Belleville washers are assembled in "tail to tail" pairs and stacked per figure 5 detail.

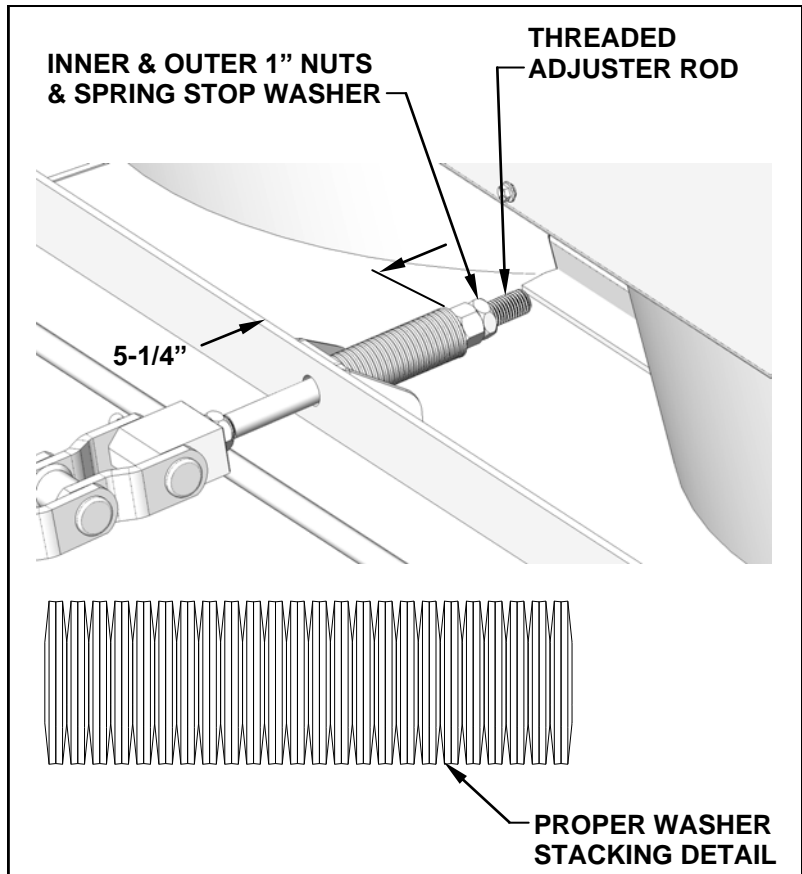


FIGURE 5. BELLVILLE SPRING WASHER STACK ADJUSTER

Sliding Gate Drive Chain Slack (With Urethane Spring Take-up)

(See figure 6)

1. To adjust the floor drive chain, run the sliding gate all the way to the rear of the spreader until it stops.
2. Remove the front panel of the sliding gate.
3. A threaded adjuster rod is provided where the drive chain attaches to the sliding gate. It is factory preset, but may require adjustment with usage.
4. Loosen the two 1" hex nuts on the end of the threaded rod. Tighten the inner nut until the urethane springs are almost fully compressed (5/8" from end of canister). Tighten the outer nut against the inner to lock the adjustment.

5. Replace the front panel.

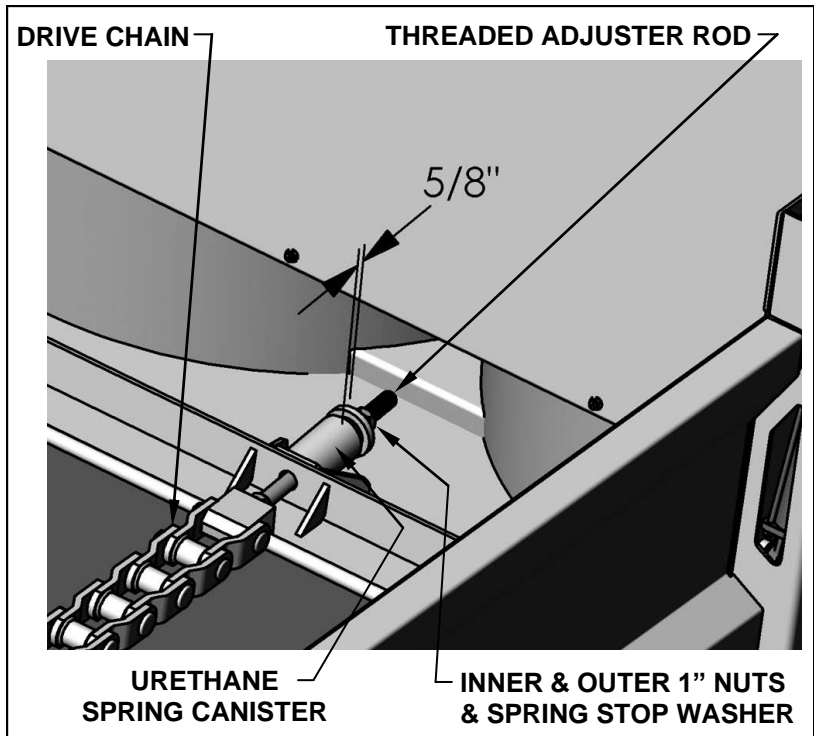


FIGURE 6. URETHANE SPRING CHAIN ADJUSTER

ADJUSTMENTS

Sliding Gate Scrapers

(See figure 7)

1. A high density polyethylene scraper bar is clamped to the vertical edges of the sliding gate. These scrapers must contact the vertical box walls to clean material.
2. To adjust, loosen the seven 3/8 carriage bolts clamping the scraper.
3. Move the scrapers so they contact against the box wall and retighten bolts.

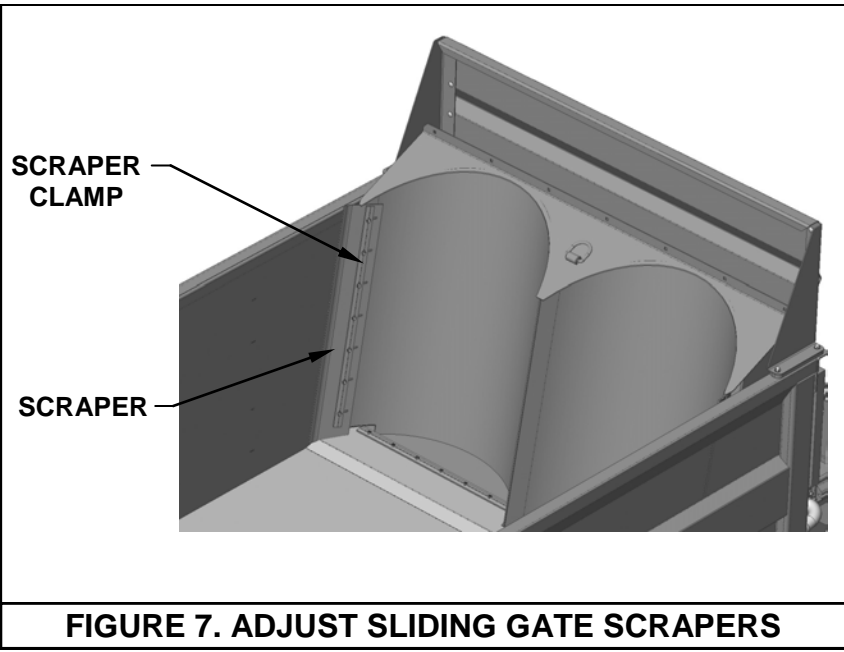


FIGURE 7. ADJUST SLIDING GATE SCRAPERS

ADJUSTMENTS

Fastening Floor Belt to Slide Gate

(See figure 8)

1. If the floor belt is ever removed from the slide gate the bolts and nuts that fastens the floor belt to the slide gate must be torque to 70 FT.LBS. If the nuts need to be replaced they must be a 7/16"-20 Grade 8 nut in order to be torque to 80 ft lbs.

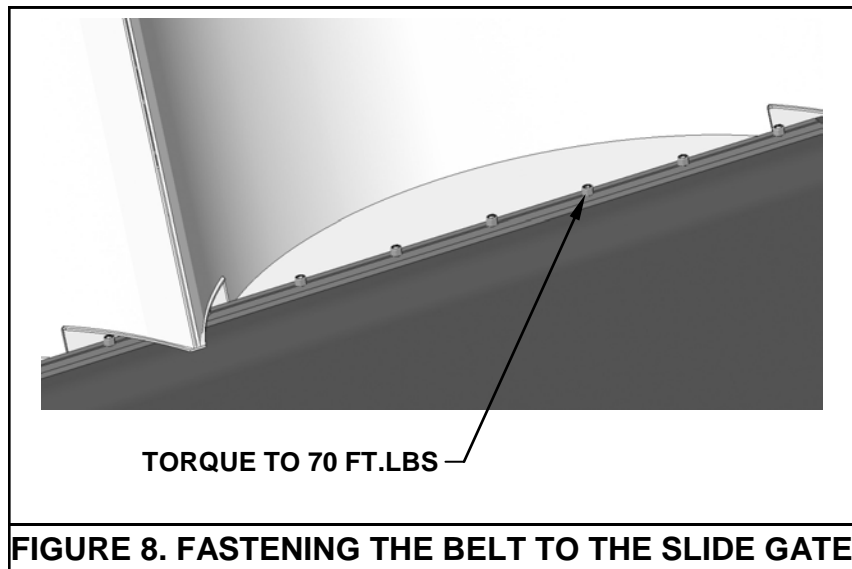
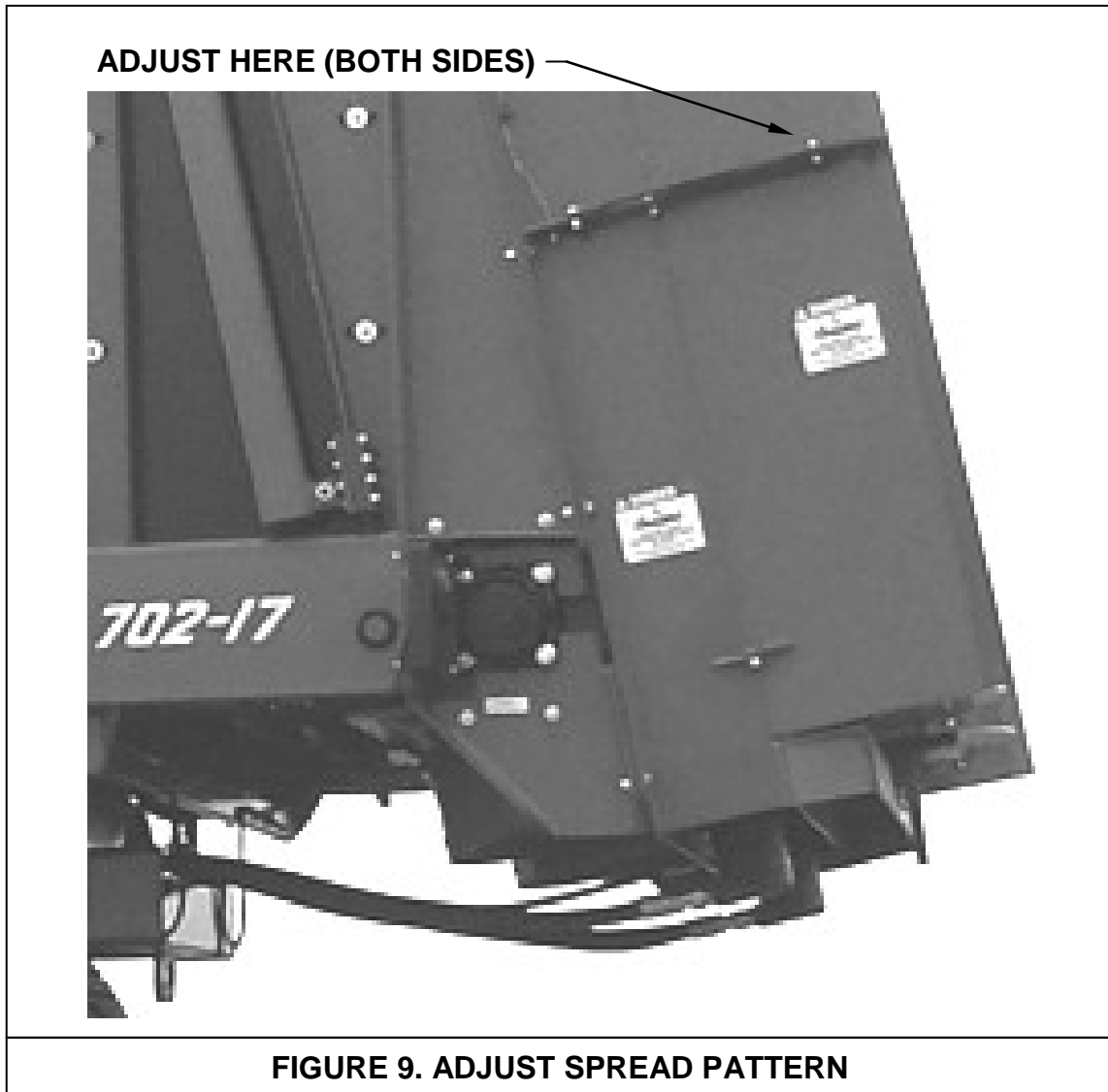


FIGURE 8. FASTENING THE BELT TO THE SLIDE GATE

Adjust Spread Pattern (THIS IS ONLY AVAILABLE AS AN OPTION)
(See figure 9)

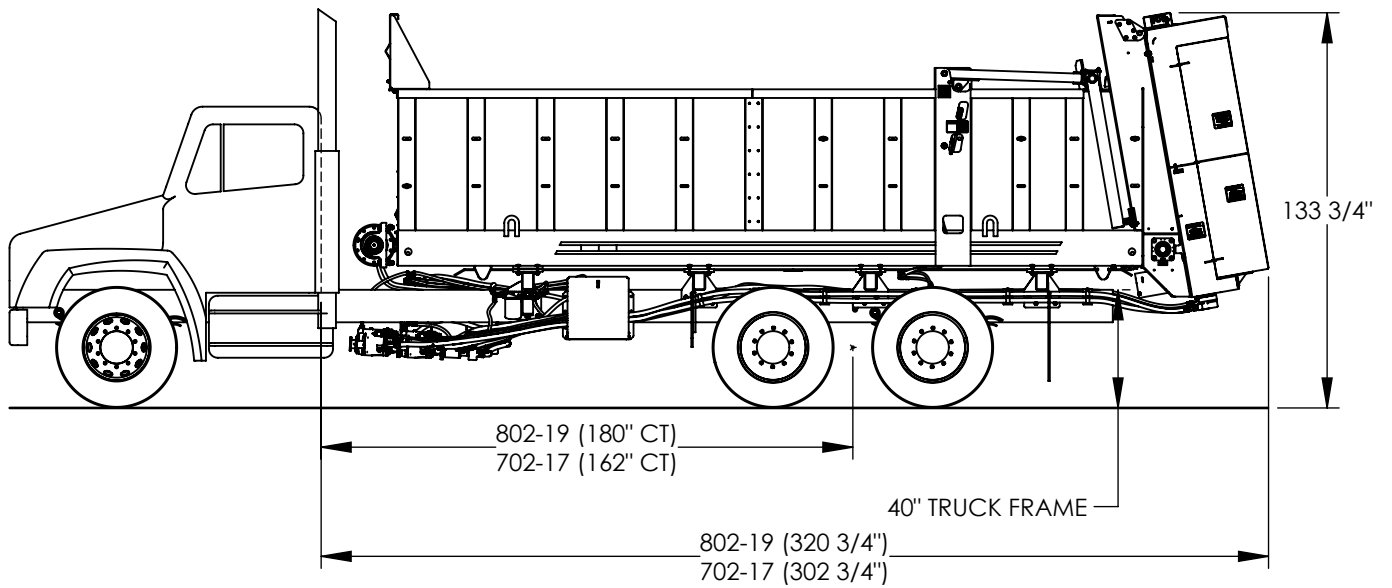
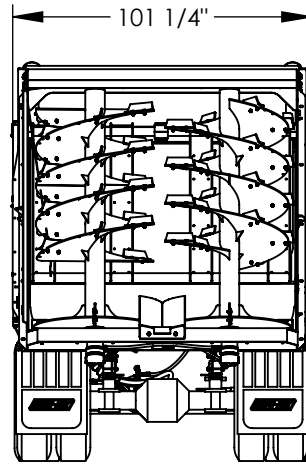
The deflectors at the rear of the spreader can be set for wide spreading or they can be hinged inward to spread straight behind the spreader.



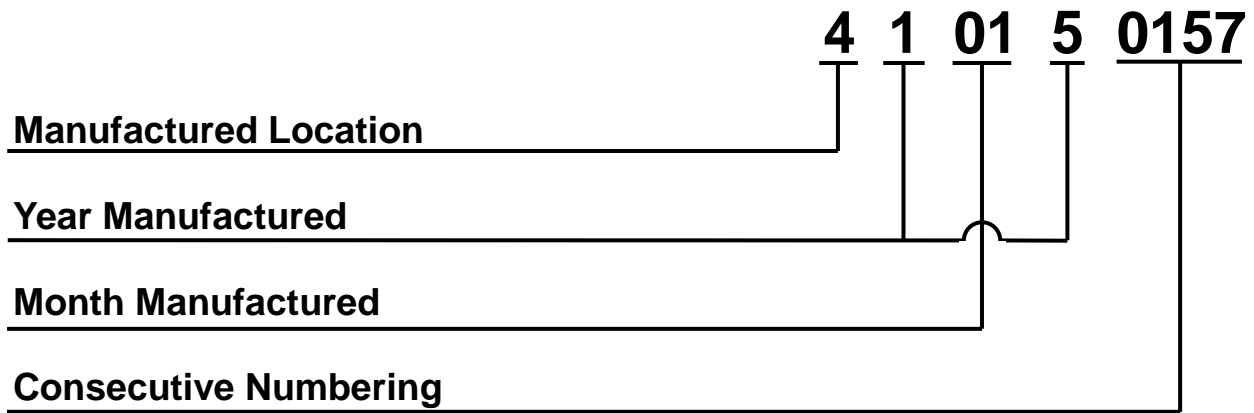
SPECIFICATIONS

Roto-Spread	702-17 Truck	802-19 Truck
Capacity (Heaped)	702 Cubic Foot	802 Cubic Foot
Struck Level	510 Cubic Foot 3,815 Gallon	570 Cubic Foot 4,264 Gallon
Spreader Weight (Empty) Without Truck	16,421 Lbs	16,780 Lbs
Load Capacity (Net)	37,500 Lbs	43,000 Lbs
Inside Dimensions	48" High, 90" Wide, 204" Long	48" High, 90" Wide, 228" Long
Outside Dimensions	102"	102"
Overall Length	288"	312"
Overall Height (Gate Lowered)	133" (Based on 40" truck frame)	133" (Based on 40" truck frame)
Overall Height (Gate Raised)	165" (Based on 40" truck frame)	165" (Based on 40" truck frame)
Unload Speed/Time	Variable	Variable
Discharge Height	48"	48"
Spread Coverage	12' to 30'	12' to 30'
Recommended HP	450 (Minimum) Truck	450 (Minimum) Truck
Beater Drive	PTO Driven Triple Hydrostat Pump Driving 2 High Torque Motors.	PTO Driven Triple Hydrostat Pump Driving 2 High Torque Motors.
Belt Drive/Rear Gate	Uses Truck PTO Hydraulics. Belt Drive Speed Regulated by an Adjustable Flow Control Valve.	Uses Truck PTO Hydraulics. Belt Drive Speed Regulated by an Adjustable Flow Control Valve.
Beaters	Two 42" Diameter High Speed Vertical Beaters with Spinners, and Double Flighting 300 RPM @ 2000 PTO RPM	Two 42" Diameter High Speed Vertical Beaters with Spinners, and Double Flighting 300 RPM @ 2000 PTO RPM
Belt Material & Chain	5/16" 350 PSI PVC Belt & WH124 H.D. Combination Chain for Belt and Retention Gate Drive System	5/16" 350 PSI PVC Belt & WH124 H.D. Combination Chain for Belt and Retention Gate Drive System
Floor, Gate & Side Walls	High Density Polyethylene on Floor, Side Walls and End Gate	High Density Polyethylene on Floor, Side Walls and End Gate

702-17 & 802-19 TRUCK DIMENSIONALS



How to read a Roto-Mix Serial Number



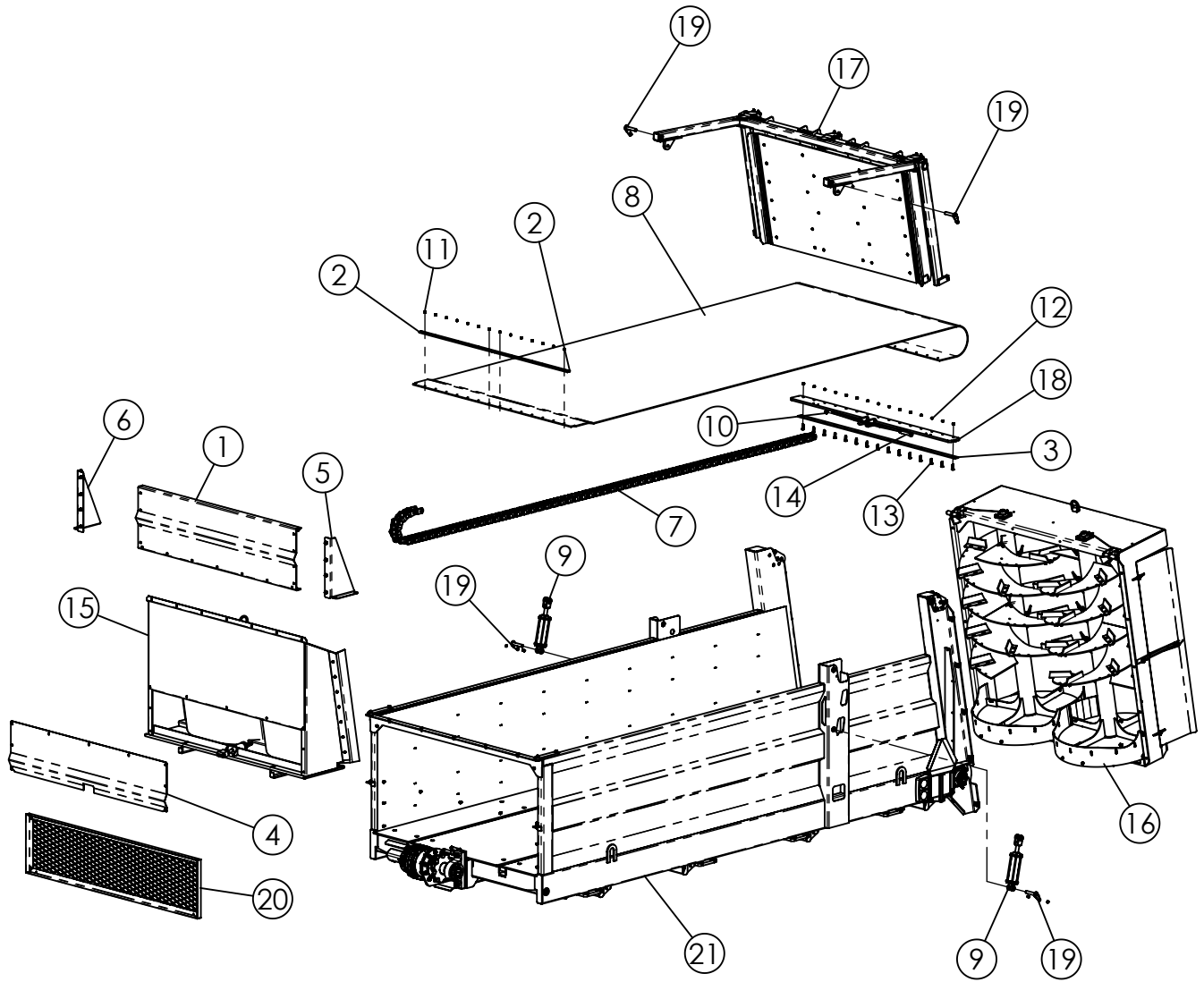
REPAIR PARTS

702-17 & 802-19

TABLE OF CONTENTS

702-17 & 802-19 Spreader Assembly	22-25
Truck Box Assembly.....	26-29
Box sides & Floor	31-33
Beater Assembly	34-37
Front Gate Assembly.....	38
Rear Gate Assembly1	39
Spreader Hydraulic Parts	40-47
Spreader Truck Wiring Harness Diagram.....	48-49
Truck Spreader Mount Kit	50-51
TRUCK CAB SCALE INDICATOR FRAME PARTS.....	52-53
Spreader Decals.....	54

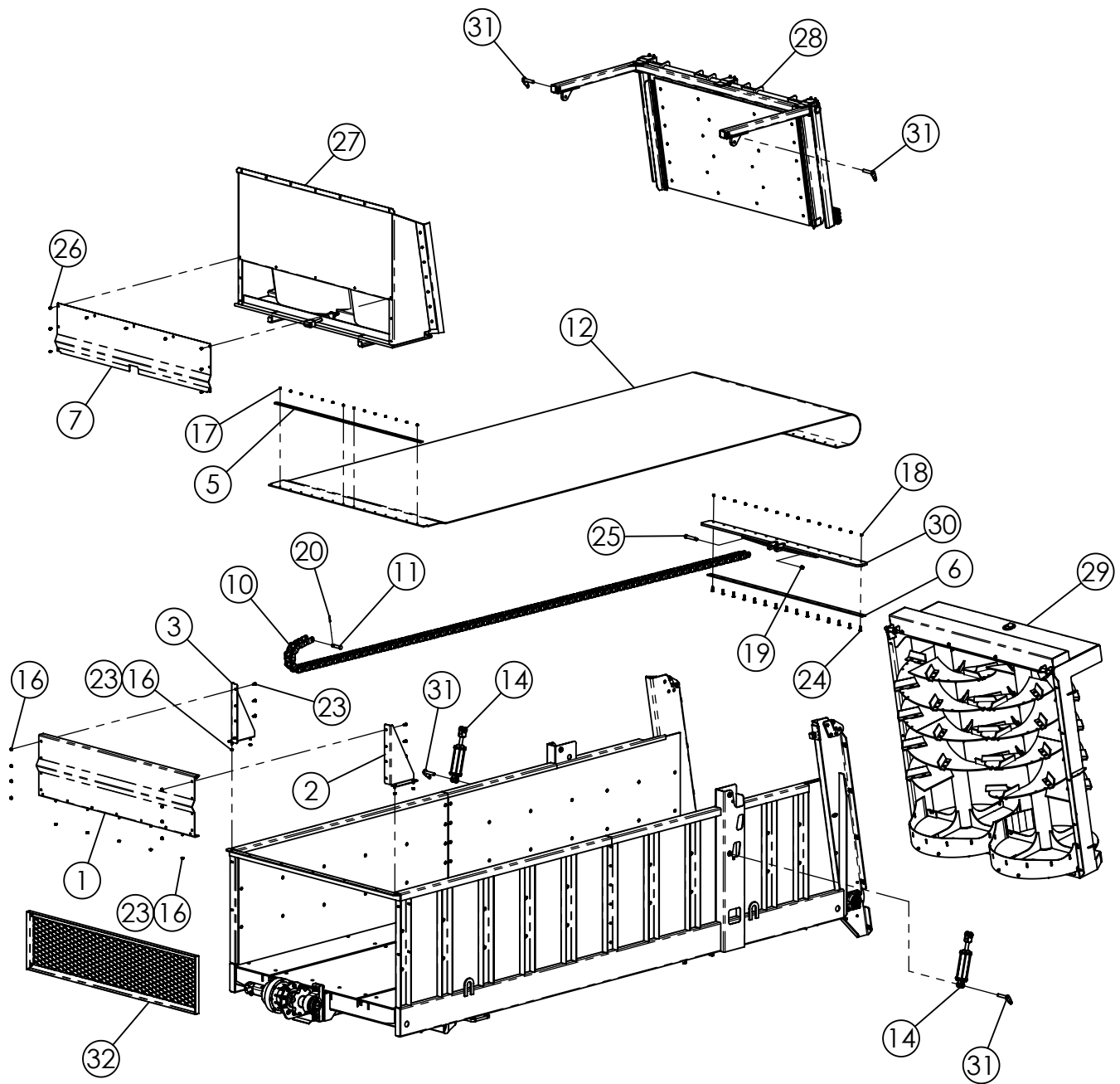
702-17 & 802-19 SPREADER ASSY WITH STEEL SIDES



702-17 & 802-19 SPREADER ASSY WITH STEEL SIDES

ITEM #	PART #	DESCRIPTION	QTY.
1	130643	802 FRONT SILAGE EXTENSION	1
2	130763	802 FRONT GATE BELT CLAMP	2
3	130764	802 PLATE BELT CLAMP	1
4	130770	802 FRONT GATE COVER	1
5	131618	LEFT SILAGE EXTENSION BRACKET	1
6	131619	RIGHT SILAGE EXTENSION BRACKET	1
7	322561	CHAIN, WELDED MILL - 4.063 PITCH (RDB 1102-23)	1
8	351036	702 BELT, .275" (7 mm) x 90" x 244" LG	1
9	364074	HYDRAULIC CYLINDER 3" x 8" x 20-1/4"	2
10	400812	HEX NUT, 3/4"-10 CENTER-LOC #5 PLTD	2
11	400907	HEX CROWNLOC NUT 7/16"-20 #C PLTD	14
12	400908	HEX CROWN LOCNUT 1/2"-13 #9	15
13	407104	CHCS 1/2"-13 x 2" #5 PLTD	15
14	407415	SHOULDER BOLT, 1"D x 5"LG x 3/4"-10 THREAD	1
15	730124	802 FRONT GATE ASSY	1
16	730197	702 VERTICAL BEATER ASSY. (TRAILER)	1
17	730213	702/802 REAR GATE ASSEMBLY (SS)	1
18	830304	802 CHAIN / BELT ADAPTER W/A	1
19	830305	802 PIVOT PIN W/A	4
20	830336	802 SCREEN SHIELD W/A	1
21	830640	702-17 SPREADER BOX WA, SS SIDES	1
	830580	802-19 SPREADER BOX WA, SS SIDES	1

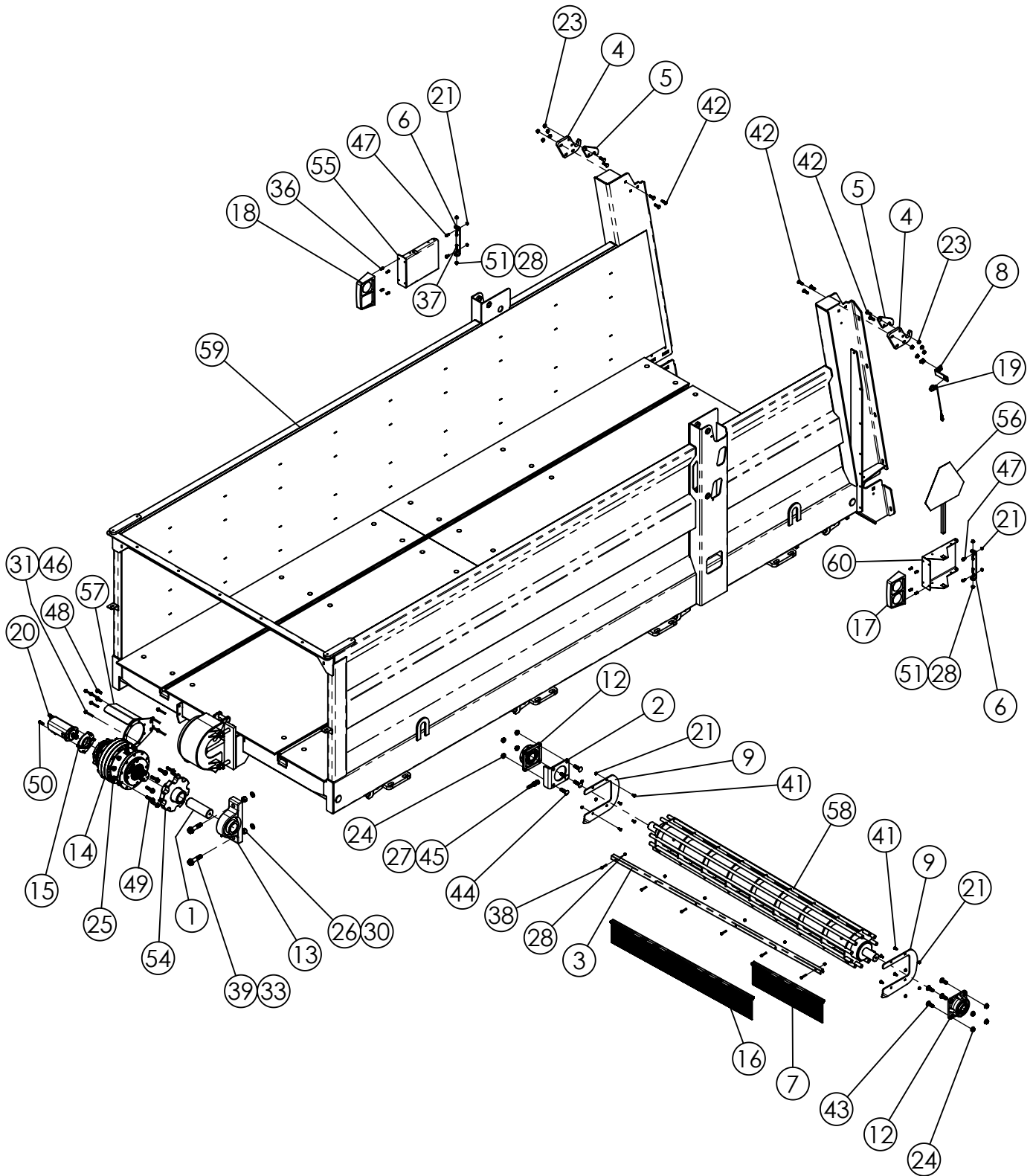
702-17 & 802-19 SPREADER ASSEMBLY



702-17 & 802-19 SPREADER ASSEMBLY

QTY	PN	DESCRIPTION	UNIT
1	130643	802 FRONT SILAGE EXTENSION, 32-1/4" x 88-1/2"	1
2	130646	SILAGE EXTENSION MOUNT BRACKET, L/H, 16-1/4" x 48"	1
3	130647	SILAGE EXTENSION MOUNT BRACKET, R/H, 16-1/4" x 28"	1
4	130759	802 FRONT GATE GUIDE, UHMW, 15-7/8"	2
5	130763	802 FRONT GATE BELT CLAMP, 41"	2
6	130764	802 PLATE BELT CLAMP, 2" x 88"	1
7	130770	802 FRONT GATE COVER, 20-1/2" x 88"	1
8	130790	802 UPPER PIVOT PLATE, 6-1/2" x 5-1/2"	2
9	130954	WASHER 3/16" x 1-1/2" SQ	20
10	322561	802 CHAIN, WELDED MILL, 4.063 PITCH - 22.66 FT.	1
	322561	702 CHAIN, WELDED MILL, 4.063 PITCH - 20.66 FT.	1
11	322561P	CONNECTOR PIN, 1" WH124HD MILL CHAIN	1
12	351029	802 BELT, 5/16" x 90" x 268"	1
13	351036	702 BELT, 5-1/16" x 90" x 244"	1
14	364074	HYDRAULIC CYLINDER 3" x 8" x 20-1/4"	2
15	400107	HEX SERRATED FLANGE NUT, 3/8"-16, #5 PLTD	4
16	400114	HEX SERRATED FLANGE NUT, 1/2"-13, #5 PLTD	21
17	400907	HEX CROWNLOC NUT 7/16"-20 #C PLTD	14
18	400908	HEX CROWN LOCNUT 1/2"-13 #9	15
19	400812	HEX NUT, 3/4"-10 CENTER-LOC #5 PLTD	1
20	404008	COTTER PIN, 5/16" x 1-1/2"	1
21	405652	HHCS, 3/8"-16 x 3/4", #5 PLTD	4
22	405704	HHCS 1/2"-13 x 1-3/4" #5 PLTD	10
23	407101	CARRIAGE BOLT, 1/2"-13 X 1-1/4"	17
24	407103	CARRIAGE BOLT, 1/2"-13 x 1-3/4"	19
25	407415	SHOULDER BOLT, 1" x 5" x 3/4"-10 THD	1
26	407900	HHCS 3/8"-16 x 3/4" SERRATED #5 PLTD	9
27	730124	802 FRONT GATE ASSY	1
28	730126	802 REAR GATE ASSEMBLY	1
29	730211	802 BEATER ASSY (HEAVY DRIVE W/O DOORS)	1
30	830304	802 CHAIN / BELT ADAPTER WA	1
31	830305	802 PIVOT PIN WA	4
32	830336	802 SCREEN SHIELD WA	1

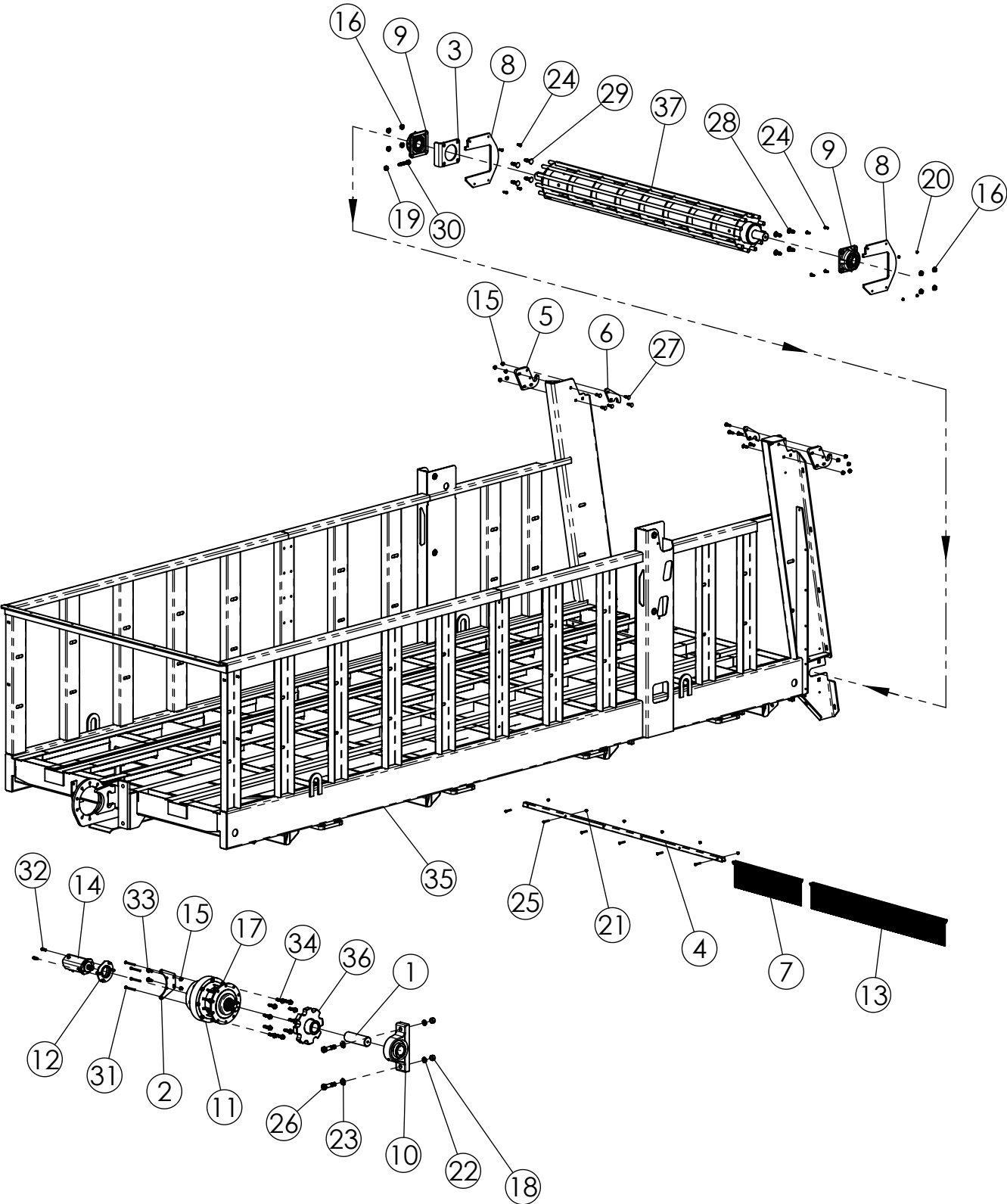
702-17 & 802-19 SPREADER BOX ASSEMBLY WITH STEEL SIDES



702-17 & 802-19 SPREADER BOX ASSEMBLY WITH STEEL SIDES

ITEM #	PART #	DESCRIPTION	QTY.
1	130664	802 BEARING SHAFT	1
2	130749	802 BELT ADJUSTER BRACKET	1
3	130785	802 BROOM CLAMP	1
4	130788	802 PIVOT PLATE	2
5	130790	802 UPPER PIVOT PLATE	2
6	130820	HAZARD LIGHT MOUNTING BRACKET	2
7	130836	BROOM 8" BRISTLES x 30" LONG	1
8	131514	REAR GATE PROXIMITY SENSOR BRACKET	1
9	131611	SPACER, BELT	2
10	322561P	CONNECTOR PIN, 1" WH124HD MILL CHAIN	1
11	322578	LINK, WELDED MILL CHAIN - (WH124HD)	3
12	340539	BEARING, 2-7/16 I.D.	2
13	340942	PILLOW BLOCK BEARING 2-15/16"	1
14	344161	GEARBOX, BREVINI (TRUCK & STATIONARY)	1
15	344274	FLANGE KIT, BREVINI SAE/A/ CS 14T IMP.	1
16	351048	BROOM 8" BRISTLES x 60" LG	1
17	357512	LIGHT ASSEMBLY, LEFT HAND	1
18	357513	LIGHT ASSEMBLY, RIGHT HAND	1
19	358442	PROXIMITY SENSOR W/CONNECTOR, 802	1
20	360049	HYD MOTOR, 18.7 CIR 14 TOOTH "A" MNT	1
21	400107	HEX NUT, 3/8"-16 SERRATED FLANGE #5	14
23	400114	HEX NUT, 1/2"-13 SERRATED FLANGE #5	12
24	400116	HEX NUT, 3/4"-10 SERRATED FLANGE #5 PLTD	8
25	400120	HEX NUT, 5/8"-11 SERRATED FLANGE #5 PLTD	10
26	400216	Hex Nut 1"-8 #5 PLTD	4
27	400812	HEX NUT, 3/4"-10 CENTER-LOC #5 PLTD	1
28	401106	HEX NUT, 3/8"-16 NYLOC #5 PLTD	10
30	402016	SPLIT LOCK WASHER 1" MED PLTD	4
31	402406	FLAT WASHER 3/8" PLTD	8
32	402508	FLAT WASHER, 1/2" ID x 1" OD	15
33	402516	WASHER FLAT, 1" SAE PLTD	3
35	404122	ROLL DRIVE PIN, 5/16 x 1-1/14 LG.	1
36	405604	HHCS 1/4"-20 x 1" #5 PLTD	8
37	405653	HHCS 3/8"-16 x 1" #5 PLTD	4
38	405657	HHCS 3/8"-16 x 2" #5 PLTD	6
39	405834	HHCS 1" x 4 1/2" #5 PLTD	2
40	405837	HHCS 1"-8 x 6" #5 PLTD	2
41	407040	CHCS 3/8"-16 x 1" #5 PLTD	10
42	407103	CHCS 1/2"-13 x 1-3/4" #5 PLTD	10
43	407140	CHCS 3/4"-10 x 2" #5 PLTD	4
44	407141	CHCS 3/4"-10 x 2-1/2" #5 PLTD	4
45	407475	HHCS 3/4"-10 x 4" #5 PLTD FULL THREAD	1
46	407818	HHCS METRIC 10mm-1.5 x 80mm (GRD 10.9)	8
47	407901	HHCS 3/8"-16 X 1" SERRATED #5 PLTD	4
48	407913	HHCS 1/2"-13 x 1-1/2" SERRATED #5 PLTD	2
49	407924	HHCS 5/8"-11 x 2-1/2" SERRATED #5 PLTD	10
50	409063	SHCS, 1/2"-13 x 1-1/4" LG	2
51	410029	BELLVILLE DISC SPRING, 1" OD x .406 ID x .106THICK	4
53	452861	SENSOR WIRE ADAPTERM, RIGHT ANGLE	1
54	830298	802 DRIVE SPROCKET W.A.	1
55	830318	HAZARD LIGHT MOUNTING BRACKET W.A.	1
56	830319	362/532/672 SLOW SIGN BRACKET W.A.	1
57	830428	GEARBOX BRACKET W/A	1
58	830607	702-1202 BELT IDLER W.A. (NARROW)	1
	830580	802-19 SPREADER BOX WA, SS SIDES	1
59	830640	702-17 SPREADER BOX WA, SS SIDES	1
60	830681	HAZARD LIGHT MOUNTING BRACKET W.A.	1
61	830714	802 CHAIN COVER	1

702-17 & 802-19 SPREADER BOX ASSEMBLY

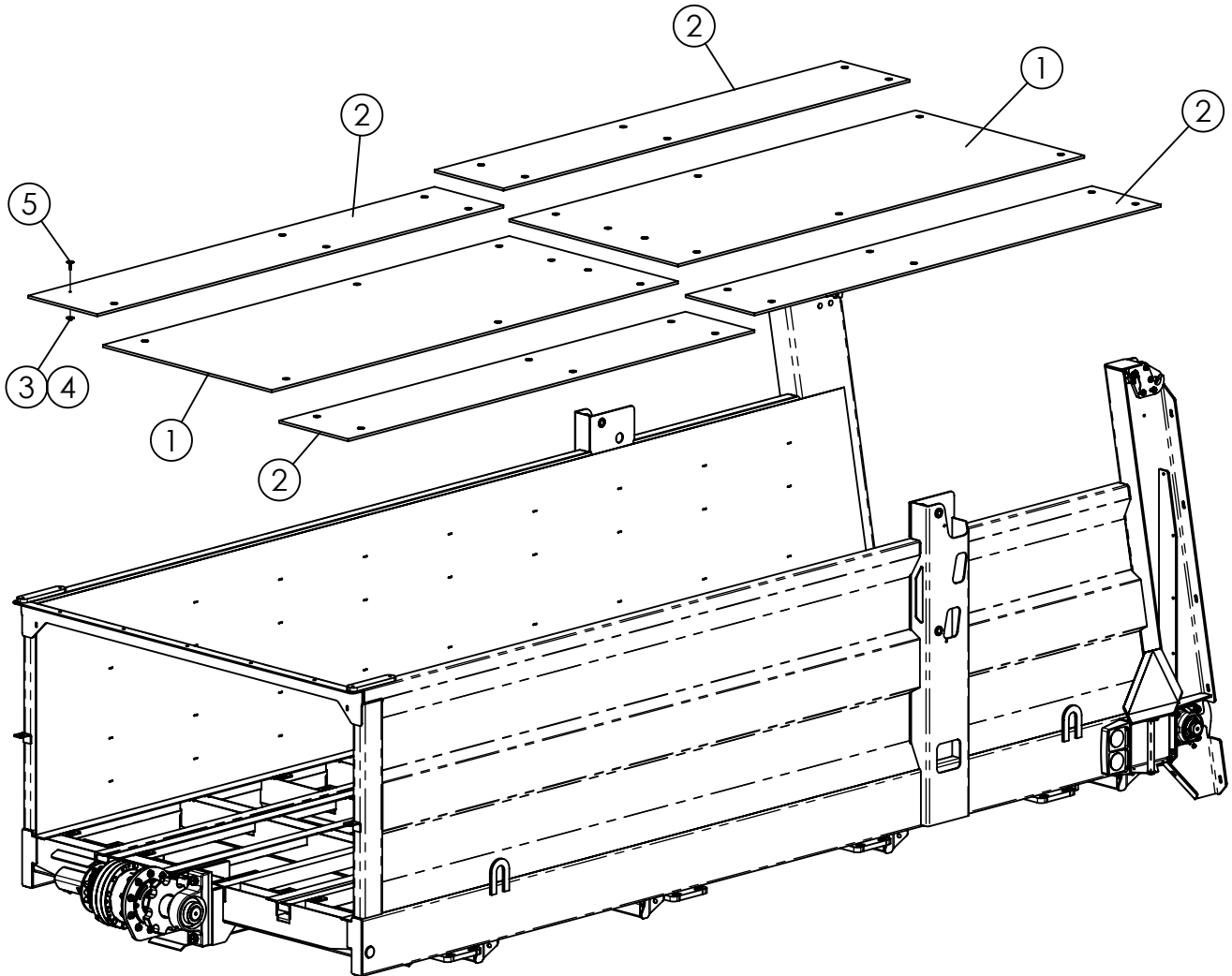


702-17 & 802-19 SPREADER BOX ASSEMBLY

ITEM #	PART #	DESCRIPTION	QTY.
1	130664	802 BEARING SHAFT	1
2	130743	802 GEARBOX BRACKET	1
3	130749	802 BELT ADJUSTER BRACKET	1
4	130785	802 BROOM CLAMP	1
5	130788	802 PIVOT PLATE	2
6	130790	802 UPPER PIVOT PLATE	2
7	130836	BROOM 8" BRISTLES x 30" LONG	1
8	130938	702/802 FILLER, HDPE-UVI, 1/2" x 16" x 14-1/4"	2
9	340539	BEARING, 2-7/16 I.D.	2
10	340942	PILLOW BLOCK BEARING 2-15/16"	1
11	344121	GEARBOX, BREVINI	1
12	344145	MOTOR ADAPTER KIT, BREVINI 2 BOLT "B" MOUNT	1
13	351048	BROOM 8" BRISTLES x 60" LG	1
14	360050	HYD MOTOR, 18.7 CI, 14 T "A" MNT w/SPD SENS	1
15	400114	HEX NUT, 1/2-13 SERRATED FLANGE #5	12
16	400116	HEX NUT, 3/4"-10 SERRATED FLANGE #5 PLTD	8
17	400120	HEX NUT, 5/8"-11 SERRATED FLANGE #5 PLTD	10
18	400216	Hex Nut 1"-8 #5 PLTD	2
19	400812	HEX NUT, 3/4"-10 CENTER-LOC #5 PLTD	1
20	400906	HEX NUT, 3/8"-16 CROWN LOC #5 PLTD	8
21	401106	HEX NUT, 3/8"-16 NYLOC #5 PLTD	6
22	402016	SPLIT LOCK WASHER 1" MED PLTD	2
23	402516	FLAT WASHER, 1" SAE	2
24	405050	TRUSS HEAD SCREW, 3/8"-16 x 1 1/4" LG	8
25	405657	HHCS 3/8"-16 x 2" #5 PLTD	6
26	405834	HHCS 1" x 4 1/2" #5 PLTD	2
27	407103	CHCS 1/2"-13 x 1-3/4" #5 PLTD	10
28	407140	CHCS 3/4"-10 x 2" #5 PLTD	4
29	407141	CHCS 3/4"-10 x 2-1/2" #5 PLTD	4
30	407475	HHCS 3/4"-10 x 4" #5 PLTD FULL THREAD	1
31	407820	HHCS METRIC 10mm-1.5 x 100mm	8
32	407840	SHCS 12mm x 35mm LG 1.75P (8.8)	2
33	407913	HHCS SERRATED, 1/2"-13 x 1-1/2", #5 PLTD	2
34	407924	HHCS 5/8"-11 x 2-1/2" SERRATED #5 PLTD	10
35	830280	802-19 SPREADER BOX WA, HDPE SIDES (PLASTIC)	1
	830340	702-17 SPREADER BOX WA, HDPE SIDES (PLASTIC)	1
	830580	802-19 SPREADER BOX WA, (SS SIDES)	1
	830640	702-17 SPREADER BOX WA, (SS SIDES)	1
36	830298	802 DRIVE SPROCKET W.A.	1
37	830307	802 BELT IDLER W.A.	1

This page intentionally left blank.

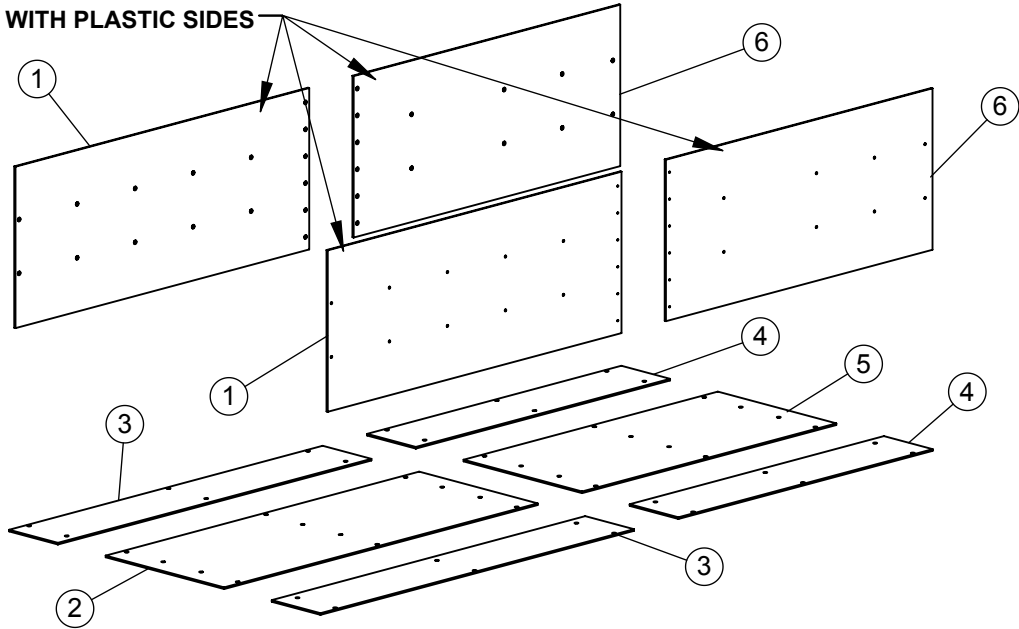
702-17 & 802-19 SPREADER BOX FLOOR PANELS WITH STEEL SIDES



ITEM #	PART #	DESCRIPTION	QTY
1	131661	FLOOR, CENTER HDPE-UVI 1102/702	2
2	131662	FLOOR, SIDE, HDPE-UVI, 1102/702	4
3	401106	HEX NUT, 3/8"-16 NYLOC #5 PLTD	40
4	402606	FENDER WASHER 3/8" x 1 1/2" PLTD	40
5	407323	ELEVATOR BOLT PLTD 3/8"-16 x 1-1/2"	40
6	407818	HHCS METRIC 10mm-1.5 x 80mm (GRD 10.9)	4
7	402406	FLAT WASHER 3/8" PLTD	4
8	402006	WASHER SPRING LOCK 3/8" MED PLTD	4

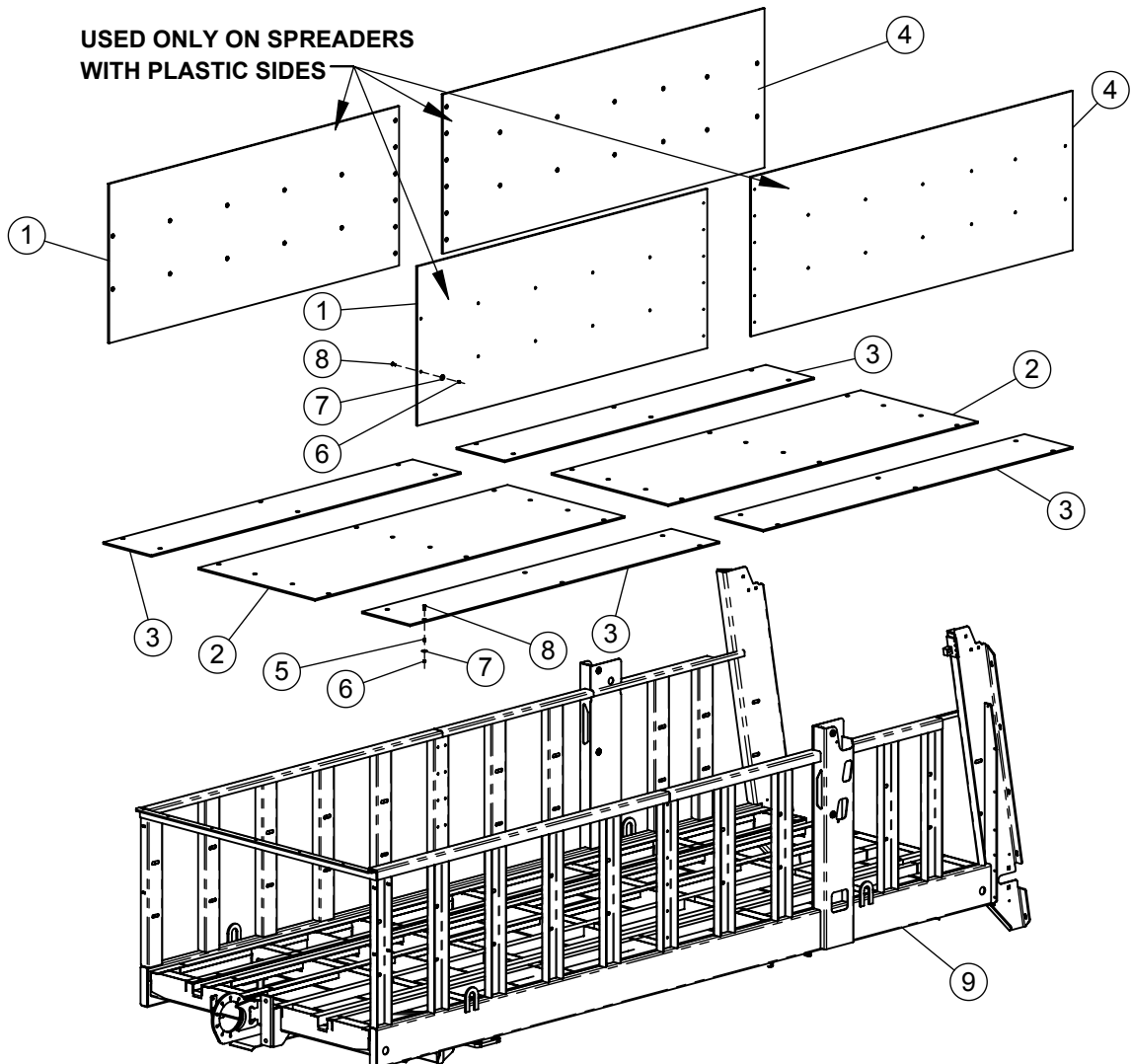
702-17 SPREADER BOX SIDES & FLOOR

USED ONLY ON SPREADERS
WITH PLASTIC SIDES



802-19 SPREADER BOX SIDES & FLOOR

USED ONLY ON SPREADERS
WITH PLASTIC SIDES



702-17 SPREADER BOX SIDES & FLOOR

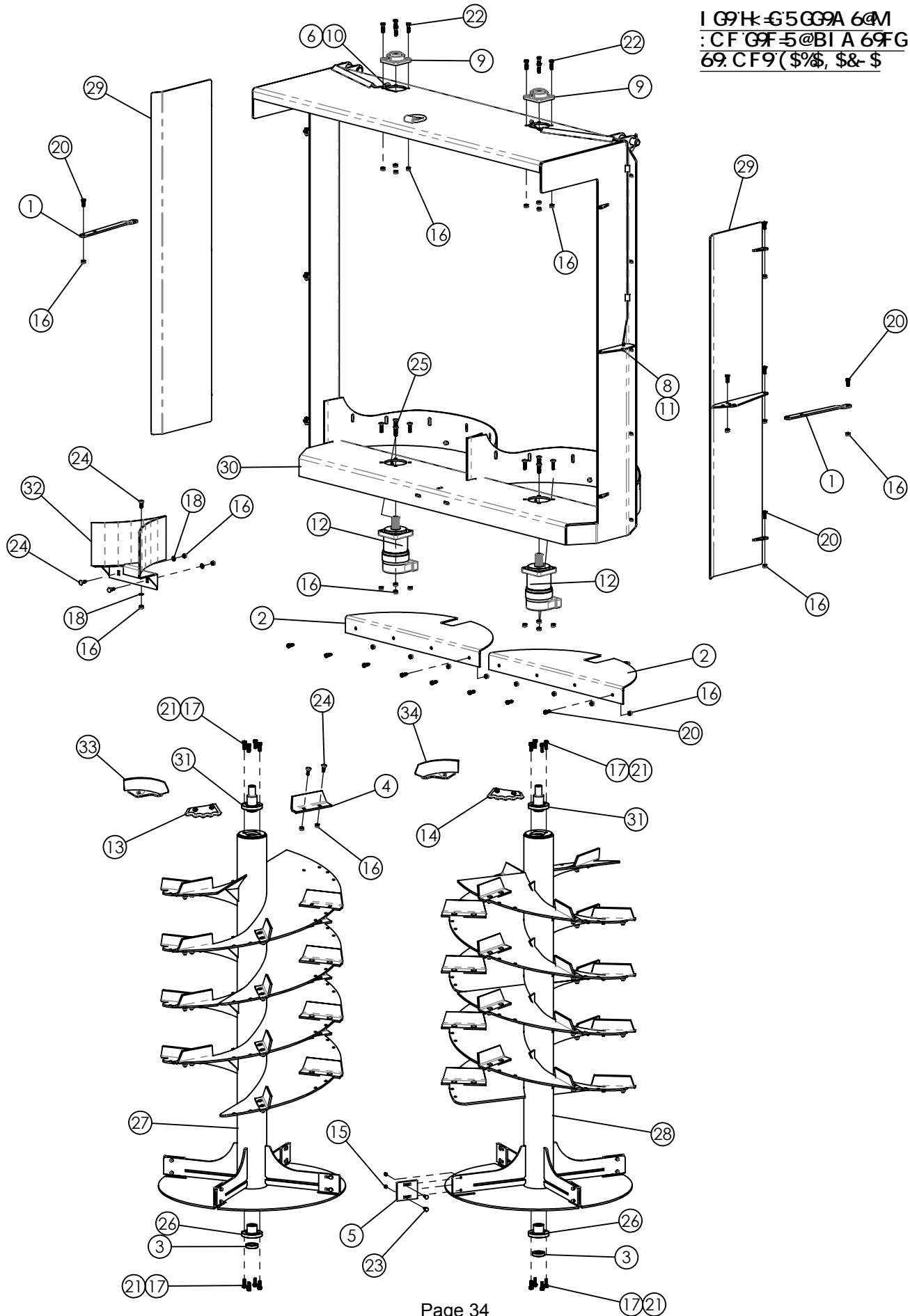
ITEM #	PART #	DESCRIPTION	QTY.
1	130320	HDPE SIDE, FRONT - SPREADER, 1/2" x 48" x 120"	2
2	130671	802 HDPE-UVI FLOOR, CENTER 1/2" x 48" x 127"	1
3	130672	802 HDPE-UVI FLOOR STRIP 1/2" x 20" x 127"	2
4	130941	FLOOR, SIDE STRIP, HDPE-UVI, 103"	2
5	130942	FLOOR, CENTER, HDPE-UVI, 103"	1
6	130943	SIDE, REAR, HDPE-UVI, 108 "	2

802-19 SPREADER BOX SIDES & FLOOR

ITEM #	PART #	DESCRIPTION	QTY.
1	130320	HDPE SIDE, FRONT - SPREADER, 1/2" x 48" x 120"	2
2	130671	802 HDPE-UVI FLOOR, CENTER 1/2" x 48" x 127"	2
3	130672	802 HDPE-UVI FLOOR STRIP 1/2" x 20" x 127"	4
4	130673	802 HDPE-UVI SIDE, REAR, 1/2" x 48" x 132"	2
5	130314	SPACER - 3/8" ID x 9/16" OD x 11/16" LG	1
6	401106	HEX NYLOC NUT, 3/8"-16, #5 PLTD	2
7	402606	FENDER WASHER PLTD. 3/8"ID x 1 1/2"OD	2
8	405050	TRUSS HD SCREW, 3/8"-16 x 1-1/4"	2
9	830280	802-19 SPREADER BOX WA, HDPE SIDES (PLASTIC)	1
	830340	702-17 SPREADER BOX WA, HDPE SIDES (PLASTIC)	1
	830580	802-19 SPREADER BOX WA, (SS SIDES)	1
	830640	702-17 SPREADER BOX WA, (SS SIDES)	1

702-17 & 802-19 SPREADER BEATER ASSEMBLY

1 G9HK-G5G9A 6@M
 : CF'G9F-5@BI A 69FG
 69.CF9'(\$%\$, \$&- \$



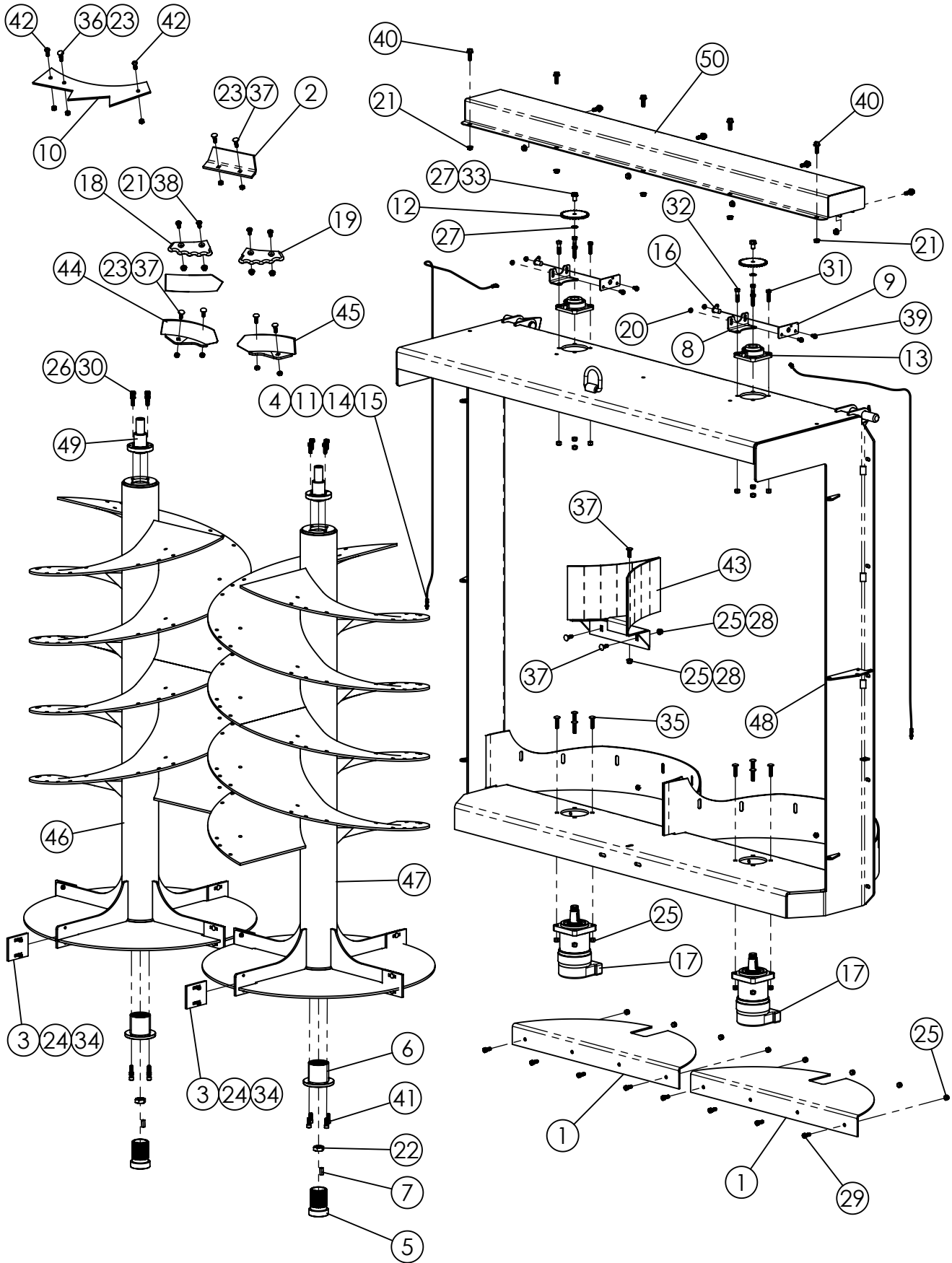
702-17 & 802-19 SPREADER BEATER ASSEMBLY

1 G9H-65G9A 64M: CF G9F-5@BI A 69FG69: CF9'(\$%\$, \$&- \$

ITEM #	PART #	DESCRIPTION	QTY.
1	130378	DOOR LINK	2
2	130708	802 BEATER SKIRT FILLER PLATE, 20" x 42-1/2"	2
3	130748	802 BEATER MOTOR SPACER, 5/8"	2
4	130750	802 ANGLE DEFLECTOR (4 1/2" x 10")	48
5	130829	802 PADDLE WEAR PLATE	8
6	130830	GREASE LINE, 3/16" x 84" COPPER	1
7	130830	GREASE LINE, 3/16" COPPER	1
8	310750	GREASE ZERK 1/8" PLTD	2
9	340425	BEARING, 4-BOLT FLANGE, 1-1/2", RCJ	2
10	356001	COMPRESSION FITTING 1/8"MP x 3/16" TUBE, 90°	2
11	356002	COMPRESSION FITTING 1/8"MP x 3/16" TUBE, STRT	2
12	360032	HYDRAULIC MOTOR, 30.7 CID VIS	2
13	385006	AUGER KNIFE 8", LEFT HAND	22
14	385009	AUGER KNIFE 8", RIGHT HAND	22
15	401106	HEX NUT, 3/8"-16 NYLOC #5 PLTD	16
16	401108	HEX NYLOC NUT, 1/2"-13, #5 PLTD	129
17	402008	SPRING LOCK WASHER 1/2" PLTD	16
18	402508	FLAT WASHER, 1/2" ID x 1" OD	3
19	405701	HHCS, 1/2"-20 x 1", #5 PLTD	4
20	405702	HHCS, 1/2"-13 x 1-1/4", #5 PLTD.	18
21	405703	HHCS, 1/2"-13 x 1-1/2", #5 PLTD.	16
22	405704	HHCS 1/2"-13 x 1-3/4" #5 PLTD	8
23	407041	CHCS 3/8"-16 x 1-1/4" #5 PLTD	16
24	407102	CARRIAGE BOLT, 1/2"-13 X 1-1/2", #5 PLTD	96
25	407104	CHCS 1/2"-13 x 2" #5 PLTD	8
26	830284	DRIVE FLANGE WA	2
27	830285	802 LEFT HAND VERTICAL BEATER WA	1
28	830286	802 RIGHT HAND VERTICAL BEATER WA	1
29	830287	802 BEATER DOOR WA	2
30	830290	802 VERTICAL BEATER FRAME WA	1
31	830301	802 BEATER IDLER SHAFT WA	2
32	830312	DEFLECTOR WA	1
33	830355	702/802 LEFT HAND CHISEL POINT DEFLECTOR	24
34	830356	702/802 RIGHT HAND CHISEL POINT DEFLECTOR	24

702-17 802-19 SPREADER BEATER ASSEMBLY

1 69 H 6 5 G 9 A 6 @ M : C F G F 5 @ B I A 6 9 F G 6 9 , B B ; K H (\$ % , \$ & \$

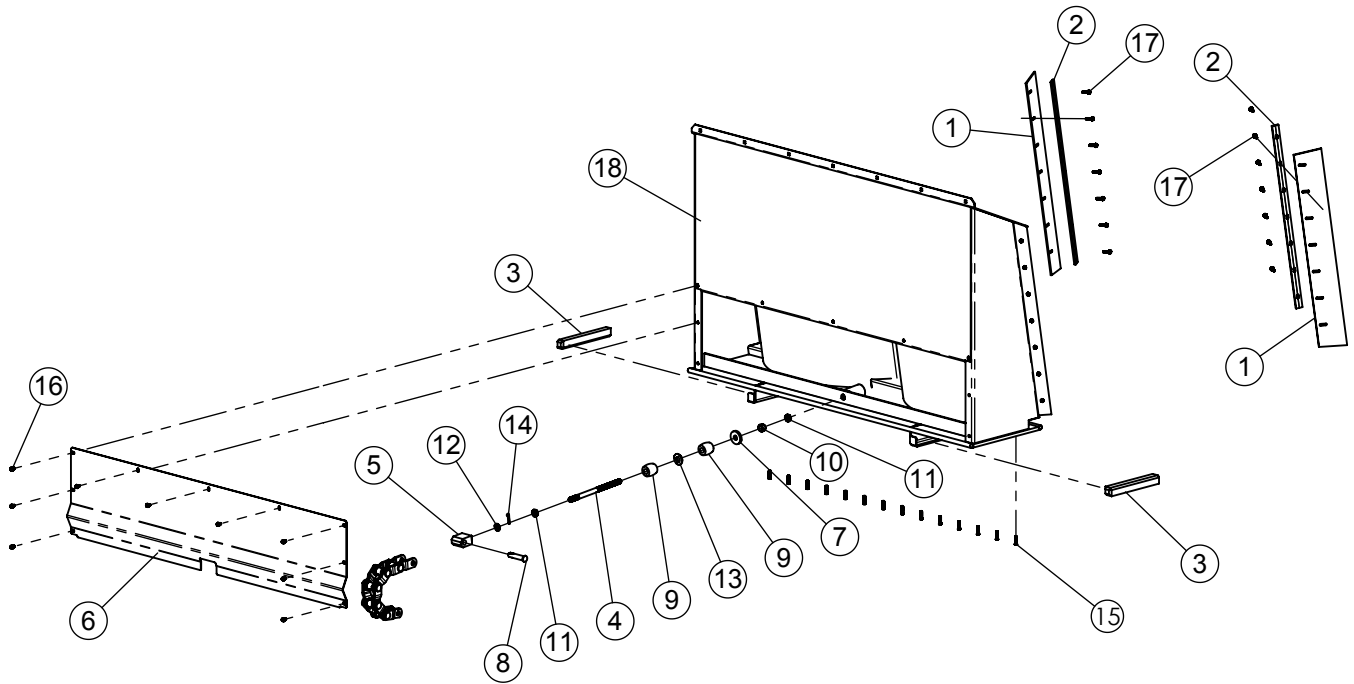


702-17 & 802-19 SPREADER BEATER ASSEMBLY

~~1 G9H G5G9A 6@M C F G7 5@BI A 69FG69 B-B; K #K (\$%\$, \$&- \$~~

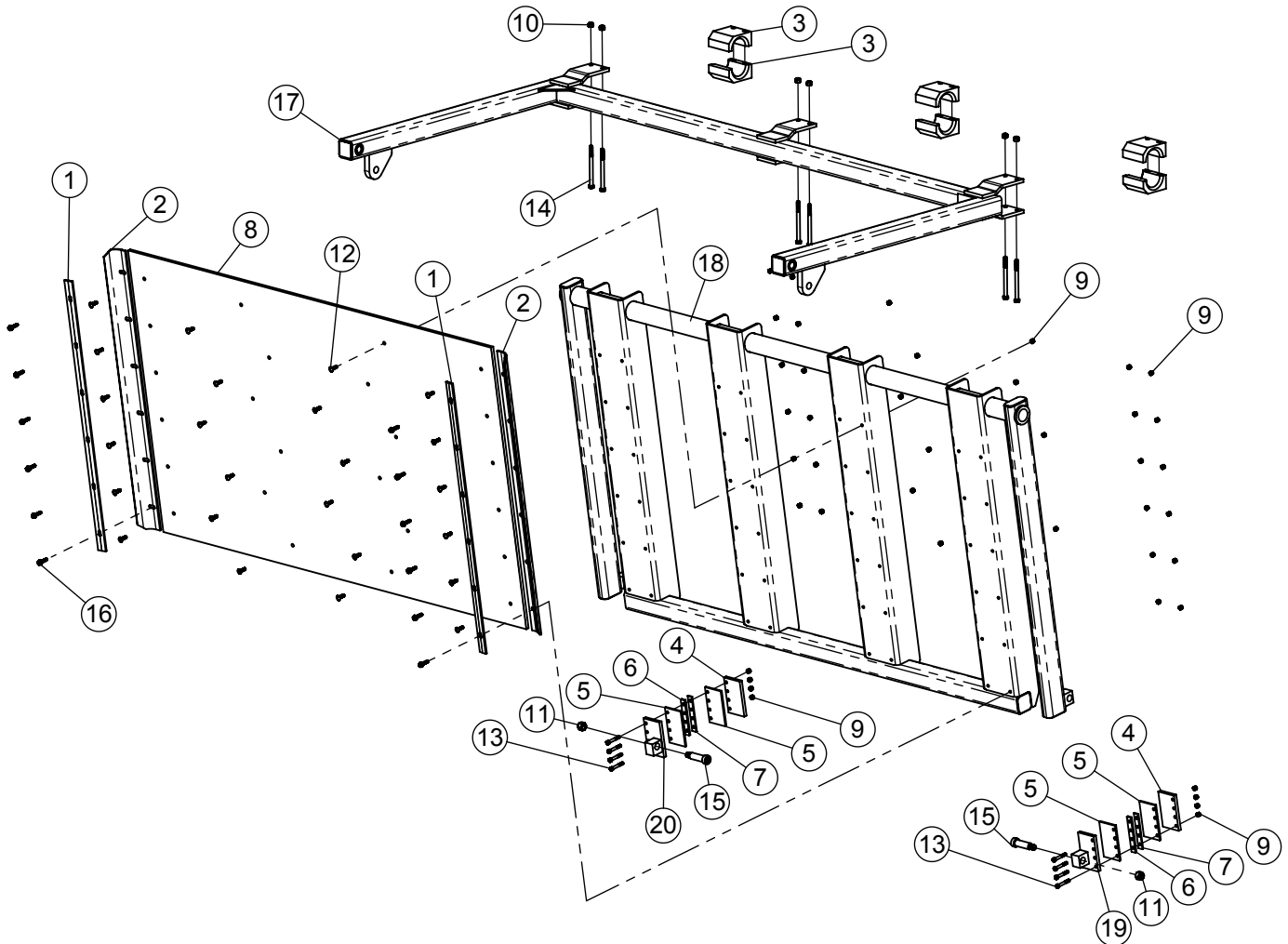
#DA	D5FH	89G7 F-DHC B	E HM
1	130708	802 BEATER SKIRT FILLER PLATE, 20" x 42-1/2"	2
2	130750	802 ANGLE DEFLECTOR (4 1/2" x 10") (OPTIONAL PARTS)	48
3	130829	802 PADDLE WEAR PLATE	8
4	130830	GREASE LINE, 3/16" COPPER	2
5	131205	SPLINED ADAPTER, (BEATER DRIVE)	2
6	131208	SPLINED HUB (BEATER DRIVE)	2
7	131262	KEY, 7/16" SQUARE x 1-1/4" LG.	2
8	131278	SENSOR MOUNT, 802	2
9	131279	SENSOR PLATE	2
10	131283	SAW TEETH, 702/802 SPREADER (OPT. PARTS)	24
11	310750	GREASE ZERK 1/8" PLTD	2
12	330401	SPROCKET, 40A30, No. 40 - 1/2" Pitch	2
13	340425	BEARING, 4-BOLT FLANGE, 1-1/2", RCJ	2
14	356001	COMPRESSION FITTING 1/8"MP x 3/16" TUBE, 90°	2
15	356002	COMPRESSION FITTING 1/8"MP x 3/16" TUBE, STRT	2
16	358441	HALL EFFECT SPEED SENSOR HARNESS	2
17	360048	HYD MOTOR, 30.7 CI 1-1/2" TAPERED SHAFT	2
18	385006	AUGER KNIFE 8", LEFT HAND (OPTIONAL PARTS)	22
19	385009	AUGER KNIFE 8", RIGHT HAND (OPTIONAL PARTS)	22
20	400107	HEX NUT, 3/8"-16 SERRATED FLANGE #5	4
21	400114	HEX NUT, 1/2"-13 SERRATED FLANGE #5 PLTD	AR
22	400145	HEX NUT, THIN 1-1/4"-18 UNEF THD (EXTRA FINE)	2
23	400909	HEX CENTER LOCKNUT 1/2"-13 #8	AR
24	401106	HEX NYLOC NUT, 3/8"-16, #5 PLTD	16
25	401108	HEX NUT, 1/2"-13 NYLOC #5 PLTD	27
26	402008	SPRING LOCK WASHER 1/2" PLTD	8
27	402110	LOCK WASHER 5/8" EXTERNAL STAR PLTD	4
28	402508	FLAT WASHER, 1/2" ID x 1" OD	3
29	405702	HHCS 1/2"-13 x 1-1/4" #5 PLTD	8
30	405703	HHCS, 1/2"-13 x 1-1/2", #5 PLTD.	8
31	405704	HHCS 1/2"-13 x 1-3/4" #5 PLTD	4
32	405705	HHCS 1/2"-13 x 2" #5 PLTD	4
33	405750	HHCS 5/8"-11 x 1" #5 PLTD	2
34	407041	CHCS 3/8"-16 x 1-1/4" #5 PLTD	16
35	407104	CHCS 1/2"-13 x 2" #5 PLTD	8
36	407117	CHCS 1/2"-13 x 2" #8 PLTD	AR
37	407118	CHCS 1/2"-13 x 1-1/2" #8 PLTD	AR
38	407553	Socket Flat Hd Cs, 1/2" X 2"	AR
39	407900	HHCS 3/8"-16 x 3/4" SERRATED #5 PLTD	4
40	407913	HHCS 1/2"-13 x 1-1/2" SERRATED #5 PLTD	9
41	409063	SHCS, 1/2"-13 x 1-1/4" LG	8
42	409100	BHSCS 1/2"-13 x 1-1/2" #8	2
43	830312	DEFLECTOR WA	1
44	830355	702/802 LEFT HAND CHISEL POINT DEFLECTOR	24
45	830356	702/802 RIGHT HAND CHISEL POINT DEFLECTOR (OPTIONAL PARTS)	24
46	830395	702/802 L/H VERTICAL BEATER W/A (HEAVY SPLINE)	1
47	830396	802 R/H VERTICAL BEATER W/A (HEAVY SPLINE)	1
48	830397	802 VERTICAL BEATER FRAME W/A (2ND GEN)	1
49	830425	802 BEATER IDLER SHAFT W/A (SPEED SENSOR)	2
50	830427	COVER, 702/802 SPEED SENSOR W/A	1

702-17 & 802-19 SPREADER FRONT GATE ASSEMBLY



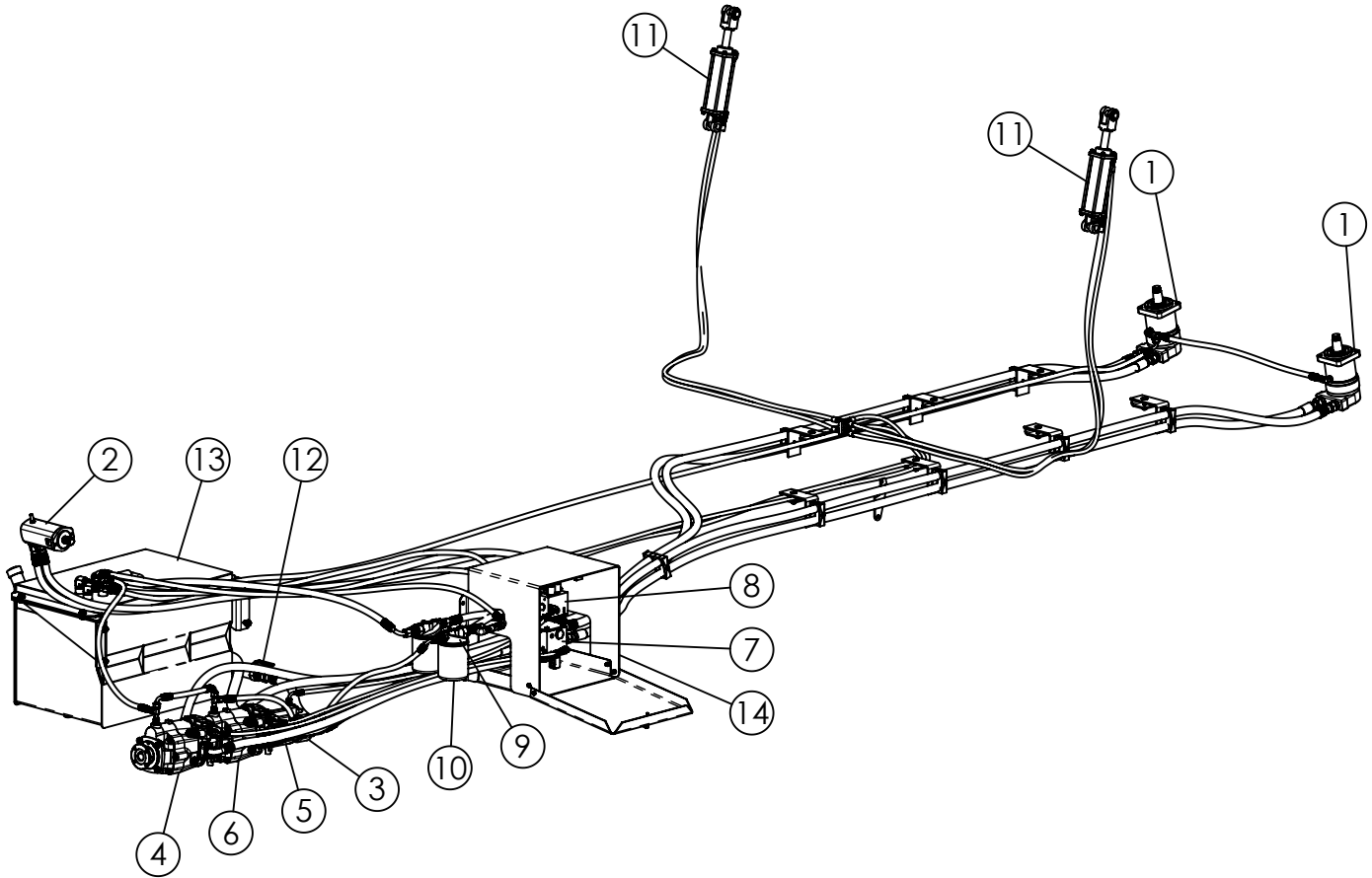
ITEM #	PART #	DESCRIPTION	QTY.
1	130428	SCRAPER, 6-1/2" x 48"	2
2	130429	CLAMP SCRAPER, 44-1/2"	2
3	130759	802 UHMW FRONT GATE GUIDE, 15-7/8	2
4	130760	802 FRONT GATE CHAIN ADAPTER, 16"	1
5	130762	802 CHAIN LUG, 3-1/2"	1
6	130770	802 FRONT GATE COVER, 20-1/2" x 88"	1
7	130956	802 WASHER, 1/2" x 1-1/16" x 3"	1
8	322561P	CONNECTOR PIN, 1" WH124HD MILL CHAIN	1
9	351987	PIRANHA URETHANE STRIPPER, 3" x 2-1/4 OD	2
10	400216	HEX NUT, 1"-8, #5 PLTD	1
11	400616	HEX JAMNUT, 1"-8, #5 PLTD	2
12	402016	SPRING LOCK WASHER, 1", MED, PLTD	1
13	402416	FLAT WASHER, 1", MED, PLTD	1
14	404008	COTTER PIN, 5/16" x 1-1/2"	1
15	407730	STUD BOLT, RIBBED NECK, 7/16"-20 UNF x 1-3/4"	14
16	407900	HHCS SERRATED, 3/8" -16 x 3/4", #5 PLTD	10
17	407902	HHCS SERRATED 3/8"-16 x 1-1/2" #5 PLTD	14
18	830292	802 FRONT GATE W.A.	1

702-17 & 802-19 SPREADER REAR GATE ASSEMBLY



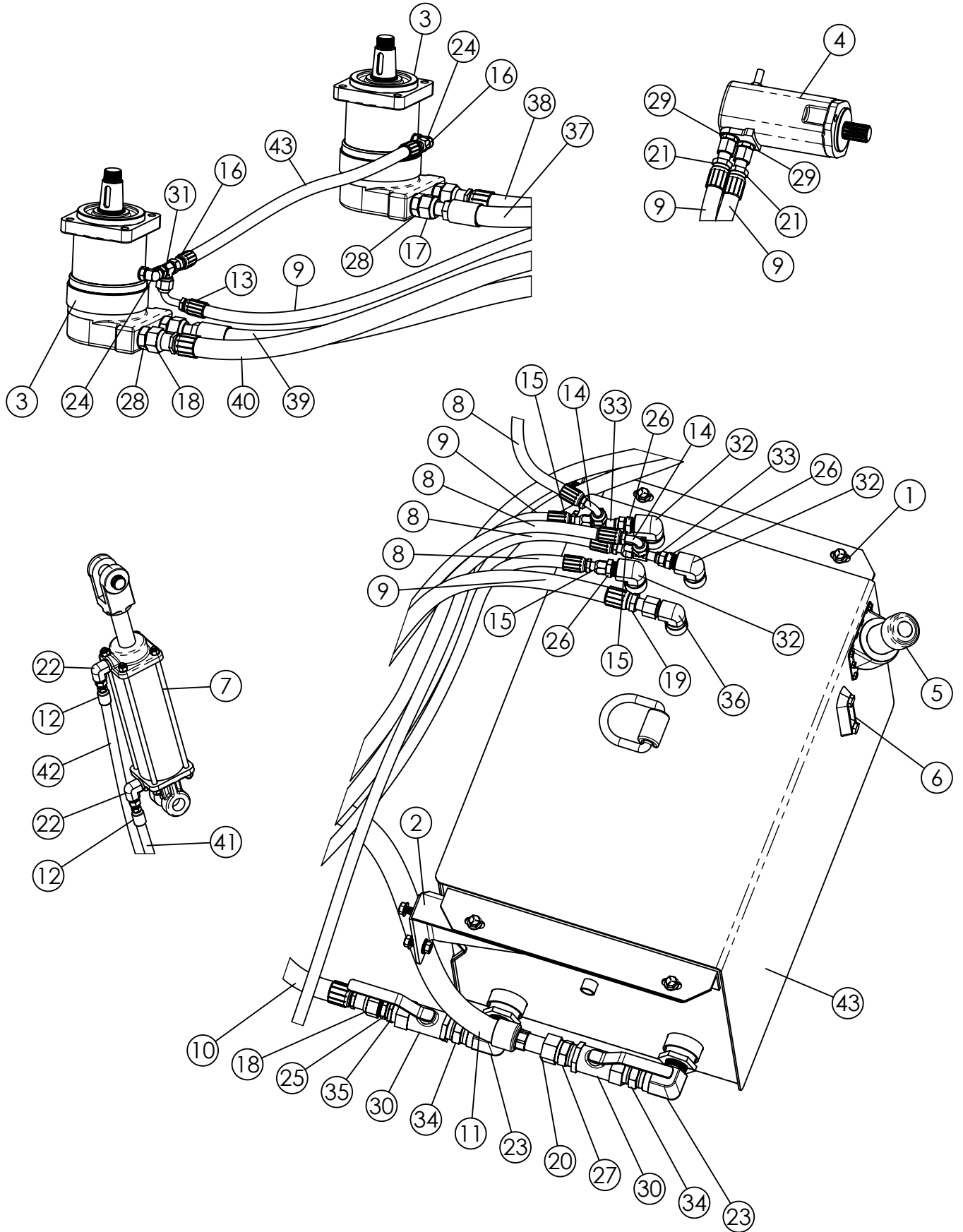
ITEM #	PART #	DESCRIPTION	QTY.
1	130439	FLASHING SEAL CLAMP	2
2	130440	FLASHING, SWINGING GATE	2
3	130739	802 REAR GATE PIVOT BLOCK, 4-1/2"	6
4	130746	802 REAR GATE GUIDE PLATE (3 1/2 x 6)	2
5	130747	802 GUIDE WEAR BLOCK, UHMW	4
6	130757	802 GUIDE SPACER, 6"	2
7	130758	802 GUIDE SPACER, 7 GA.	2
8	130780	REAR GATE COVER, HDPE, 1/2" x 48" x 80-1/2"	1
9	401106	HEX NUT, 3/8"-16 NYLOC #5 PLTD	44
10	401108	HEX NYLOC NUT, 1/2"-13, #5 PLTD	6
11	401112	HEX NUT, 3/4"-10 NYLOC #5 PLTD	2
12	405050	TRUSS HD SCREW, 3/8"-16 x 1-1/4"	24
13	405659	HHCS 3/8-16 x 2-1/2 #5 PLTD	8
14	405718	HHCS, 1/2"-13 x 6-1/2", # 5 PLTD.	6
15	407413	SHOULDER BOLT, 1"D x 3" LG x 3/4"-10	2
16	407902	HHCS SERRATED 3/8"-16 x 1-1/2" #5 PLTD	12
17	830283	802 REAR GATE ARM W.A.	1
18	830303	802 REAR GATE W/A	1
19	830311	802 REAR GATE GUIDE W.A. (LEFT HAND)	1
20	830313	802 REAR GATE GUIDE W/A	1

702-17 & 802-19 HYDRAULICS WITH DUAL HYDRAULIC MANIFOLD



#PA	D5FH	89G7 F-DHC B	E HM
1	360048	HYD MOTOR, 30.7 CI 1-1/2" TAPERED SHAFT	2
2	360050	HYD MOTOR, 18.7 CI, 14 T "A" MNT w/SPD SENS	1
3	362037	PUMP, 1.87 CIR GEAR (L/H ROTATION)	1
4	362118	PUMP, 6.0 CIR LOAD SENSE - L/H ROT	1
5	362120	PUMP, LOAD SENSE 2.32 CIR - L/H ROT.	1
6	362121	PUMP, 6.0 LOAD SENSE - L/H ROT.	1
7	362382	MANIFOLD, 702/802 BEATER DRIVE	1
8	362383	MANIFOLD, FLOOR/GATE (702/802) LOAD SENSE	1
9	362404	FILTER HEAD, 1-1/4" FP	2
10	362442	FILTER ELEMENT 1-1/4"	1
11	364074	HYDRAULIC CYLINDER 3" x 8" x 20-1/4"	2
12	368527	BALL VALVE, 1-1/4" FP	2
13	730141	802 TRAILER SPREADER RESERVOIR	1
14	730199	802 MANIFOLD COVER ASSY	1

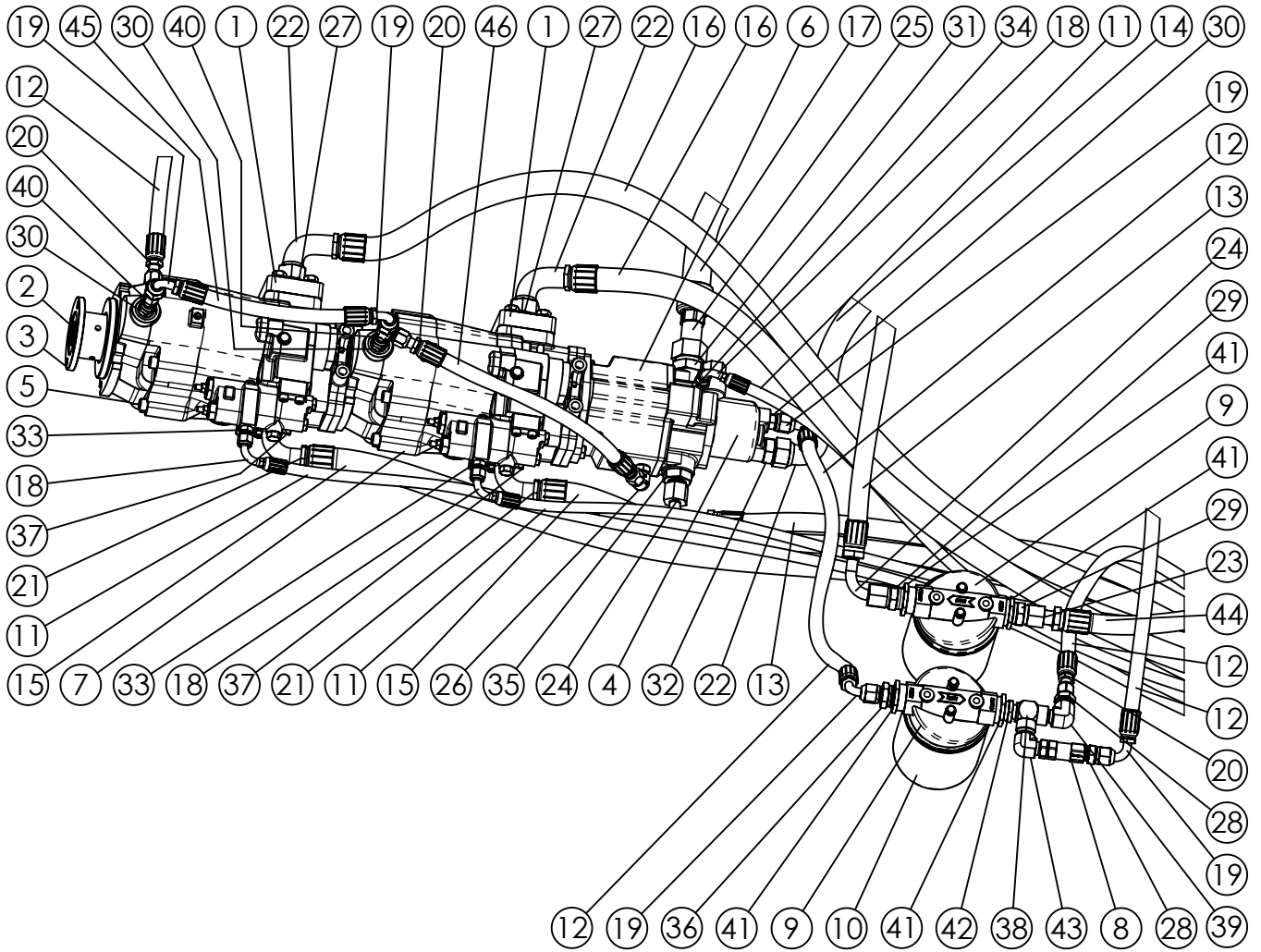
702-17 & 802-19 SPREADER HYDRAULIC TANK, MOTORS & CYLINDERS



702-17 & 802-19 SPREADER HYDRAULIC TANK, MOTORS & CYLINDERS

#	QTY	DESCRIPTION	UNIT
1	130889	802 TRUCK RESERVOIR BRACKET (R/H)	1
2	130890	802 TRUCK RESERVOIR BRACKET (L/H)	1
3	360048	HYD MOTOR, 30.7 CI 1-1/2" TAPERED SHAFT	2
4	360050	HYD MOTOR, 18.7 CI, 14 T "A" MNT w/SPD SENS	1
5	362552	SIDE FILLER HI-NECK ASSY	1
6	362555	SIGHT GAUGE 5"	1
7	364074	HYDRAULIC CYLINDER 3" x 8" x 20-1/4"	2
8	366008	HOSE, 1/2"-2, 8M3K (3000PSI)	AR
9	366032	HOSE, 3/4"-2, 12M3K (3000PSI)	AR
10	366040	HOSE, 1", 16GMV (300PSI)	AR
11	366085	HOSE, 1-1/4", 20GMV (250PSI)	AR
12	367079	HOSE COUPLING, 6G-6FJX x 3/8"	10
13	367097	HOSE COUPLING 1/2" x 3/4" JIC (8G-8FJX90)	1
14	367098	HOSE COUPLING 1/2" x 13/16" FFORX90S	8
15	367100	HOSE COUPLING 1/2" x 13/16" FFORX	8
16	367101	HOSE COUPLING 1/2" x 3/4" FJX ,8G-8FJX	2
17	367135	HOSE STEM 1" x 16GS-16FFORX	6
18	367137	HOSE COUPLING 1" x 16G-16FFORX	7
19	367141	HOSE COUPLING, 3/4"x 1-3/16 FFFORX	5
20	367152	HOSE COUPLING 20G-20FFORX x 1-1/4	2
21	367171	HOSE COUPLING, 3/4"x 1"-14 FFFORX	2
22	368016	90° ELBOW, 3/8"MP x 9/16"JIC	4
23	368036	HYDRAULIC ADAPTER 1-1/4"MP x 1-1/4"FP 90°	2
24	368082	90° ELBOW, 9/16"MP x 3/4"JIC	2
25	368134	STRAIGHT ADAPTER, 1" MP x 1-7/16" ORFS	3
26	368136	STRAIGHT ADAPTER, 3/4" MP x 13/16" FFOR	3
27	368137	HYDRAULIC ADAPTER 1-1/4"MP x 1-11/16"FFOR	1
28	368417	STRAIGHT ADAPTER, 1-7/16" FFOR x 1-1/16" MORB	4
29	368468	STRAIGHT ADAPTER, 1"-14 FFOR x 7/8" MORB	6
30	368527	BALL VALVE, 1-1/4" FP	2
31	368618	TEE, 3/4" JIC SWIVEL RUN	1
32	368625	HYD ADAPTER 90°, 1" MP x 3/4" FP	3
33	368636	TEE RUN, 13/16" ORFS SWIVEL	4
34	368648	HEX NIPPLE, 1-1/4" MP x 1-1/4" MP	2
35	368666	HEX REDUCER, 1-1/4" MP x 1" FP	5
36	368691	HYDRAULIC ADAPTER, 90° 1"MP x 1-3/16 FFOR	1
37	781751	HOSE ASSY, 1" x 1-7/16 FFORX x 1-7/13 FFORX	1
38	781752	HOSE ASSY, 1" x 1-7/16 FFORX x 1-7/16 FFORX	1
39	781753	HOSE ASSY 1" x 1-7/16 FFORX x 1-7/16 FFORX90S	1
40	781754	HOSE ASSY, 1" x 1-7/16 FFORX x 1-7/16 FFORX	1
41	781774	HOSE ASSY, 3/8" x 9/16 FJX x 9/16 FJX	1
42	781780	HOSE ASSY, 3/8" x 9/16 FJX x 9/16 FJX	1
43	781781	HOSE ASSY, 1/2" x 3/4 FJX x 3/4 FJX	1
44	830317	802 TRUCK HYDRAULIC RESERVOIR, 55GAL	1

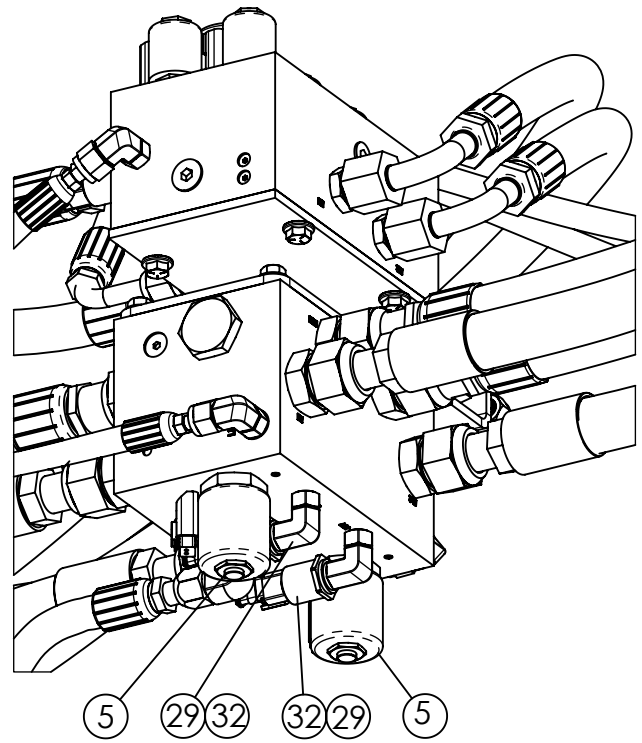
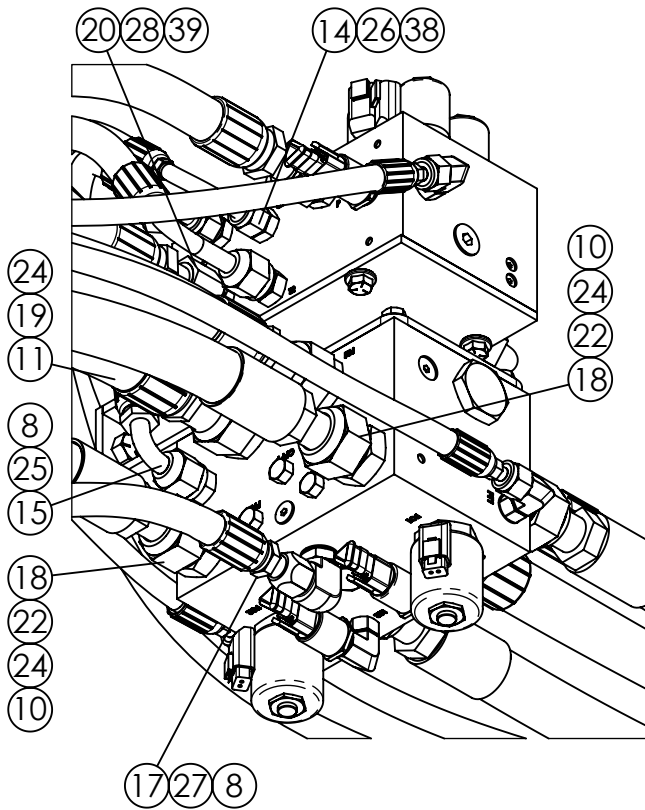
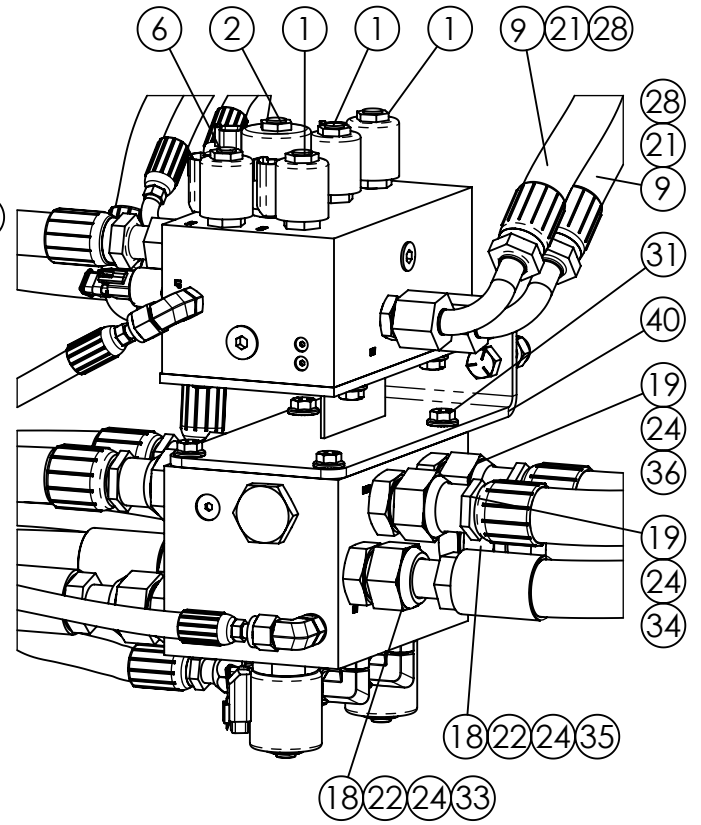
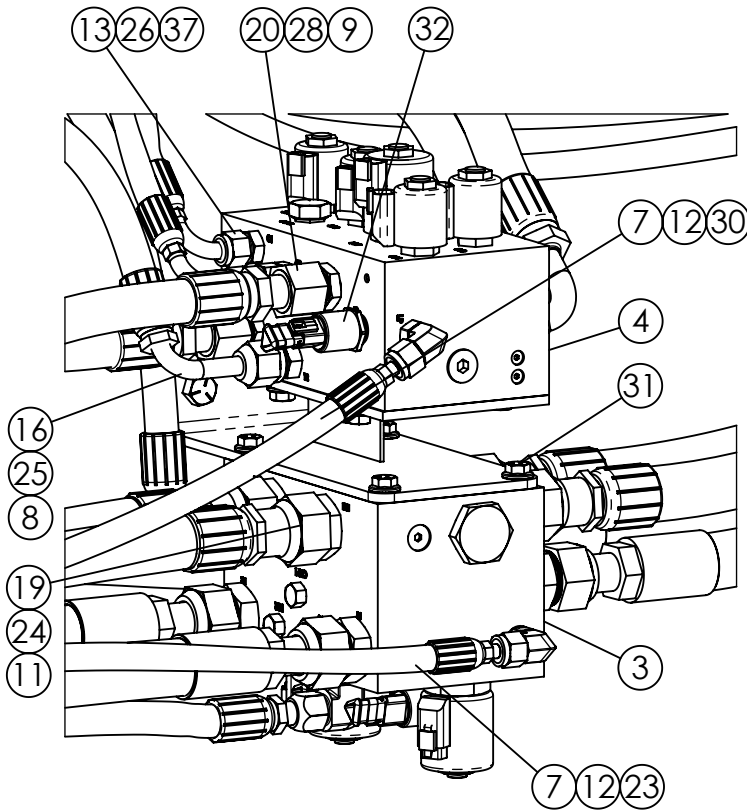
702-17 & 802-19 HYDRAULIC PUMPS & FILTERS



702-17 & 802-19 HYDRAULIC PUMPS & FILTERS

#PA	D5FH	89G7 F-DHC B	E HM'
1	130787	FLANGE ADAPTER, 2 1/2" CODE 61 x 1" FP	2
2	185480	3/8" SQ. X 2" KEY	1
3	338406	COMPANION FLANGE, 1350, 1-1/2"	1
4	362037	PUMP, 1.87 CIR GEAR (L/H ROTATION) STD-TRANS	1
	362037-R	PUMP, 1.87 CIR GEAR (R/H ROTATION) AUTO-TRANS	1
5	362118	PUMP, 6.0 CIR LOAD SENSE - (L/H ROTATION) STD-TRANS	1
	362118-R	PUMP, 6.0 CIR LOAD SENSE - (R/H ROTATION) AUTO-TRANS	1
6	362120	PUMP, LOAD SENSE 2.32 CIR - (L/H ROTATION) STD-TRANS	1
	362120-R	P, LOAD SENSE 2.32 CIR - (R/H ROTATION) AUTO-TRANS	1
7	362121	PUMP, 6.0 LOAD SENSE - (L/H ROTATION) STD-TRANS	1
	362121-R	PUMP, 6.0 LOAD SENSE - (R/H ROTATION) AUTO-TRANS	1
8	362231	CHECK VALVE, 1/2" FP x 1/2" FP (25 PSI)	1
9	362404	FILTER HEAD, 1-1/4" FP	2
10	362442	FILTER ELEMENT 1-1/4"	2
11	366006	HOSE, 6M3K 3/8"-2 (3000 PSI)	AR
12	366008	HOSE, 8MSK 1/2"-2 (3000 PSI)	AR
13	366032	HOSE, 12M3K 3/4"-2 (3000 PSI)	AR
14	366040	HOSE, 16GMV 1" (300 PSI)	AR
15	366041	HOSE, 16EFG5K 1"-5 (5000 PSI)	AR
16	366045	HOSE, 16G1H-1 1"-1 (1000 PSI)	AR
17	366085	HOSE, 20GMV 1-1/4" SPIRAL WIRE SUCTION	AR
18	367080	HOSE COUPLING 3/8" x 11/16"FFORX90S	4
19	367098	HOSE COUPLING 1/2" x 13/16"FFORX90S	8
20	367100	HOSE COUPLING 1/2" x 13/16"FFORX	8
21	367132	HOSE STEM, 16GS-16FL90 1"	2
22	367139	HOSE COUPLING 1" x 16G-16FFORX90S	3
23	367141	HOSE COUPLING, 3/4"x 1-3/16 FFFORX	5
24	367142	HOSE COUPLING 3/4" x 1-3/16"FFORX90S	4
25	367152	HOSE COUPLING 20G-20FFORX x 1-1/4	2
26	368097	ADPT, 90° ELBOW, 9/16 MOR x 13/16 FFOR	1
27	368134	STRAIGHT ADAPTER, 1" MP x 1-7/16" ORFS	3
28	368135	STRT ADPT, 1/2" MP x 13/16 FFOR	2
29	368177	STRT ADPT, 1-3/16" FFOR x 1"MP	2
30	368191	STRT ADPT, 13/16 FFOR x 7/8 MORB	3
31	368192	STRT ADPT, 1-5/8" MOR x 1-11/16" FFOR	1
32	368193	STRT ADPT, 1-7/16" ORFS x 1-5/16" MORB	9
33	368195	STRT ADPT, 11/16 FFOR x 9/16 MORB	2
34	368196	STRT ADPT, 11/16 FFOR x 7/16 MORB	1
35	368302	STRT ADPT, 1-5/16 MOR x 1-3/16 FFOR	1
36	368415	STRT ADPT, 1" MP x 13/16" FFOR	1
37	368458	FLANGE. SET KIT, 1" CODE 61 (TOMPKINS# SFK-16)	2
38	368608	STREET TEE 1/2"MP x 1/2"FP x 1/2"FP	1
39	368634	ADPT, 90° ELBOW, 1/2"MP x 1/2"FP	1
40	368636	TEE RUN, 13/16" ORFS SWIVEL	4
41	368666	HEX REDUCER, 1-1/4" MP x 1" FP	5
42	368667	HEX REDUCER, 1" MP x 1/2" FP	1
43	368690	ADPT, 90° ELBOW, 1/2"MP x 1/2"MP	1
44	781767	HOSE ASSY, 3/4" x 1-3/16 FFORX x 1-3/16 FFORX	1
45	781785	HOSE ASSY, 1/2" x 13/16 FFORX90 x 13/16 FFORX90	1
46	781786	HOSE ASSY, 1/2" x 13/16 FFORX x 13/16 FFORX90	1

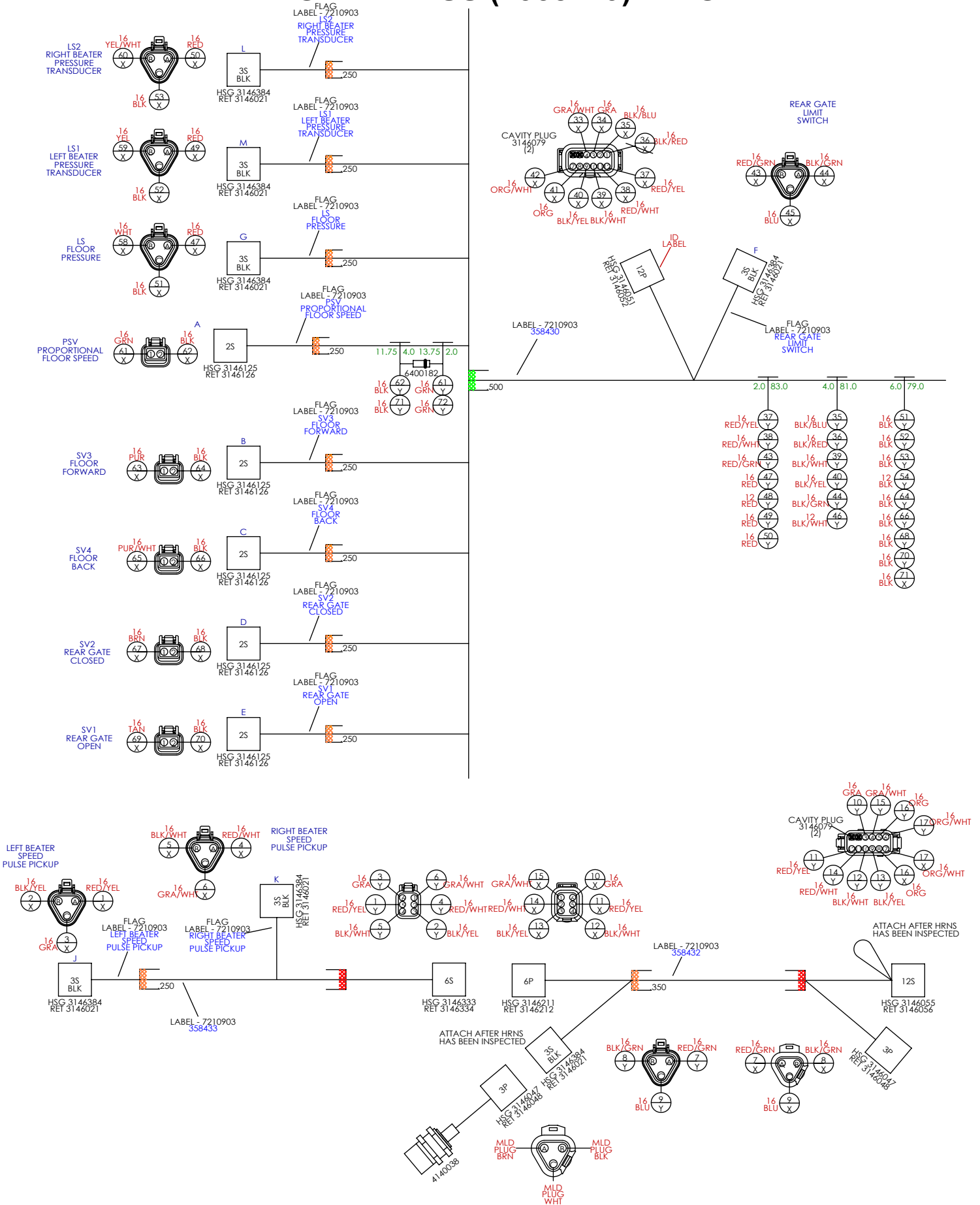
**702-17 & 802-19 HYDRAULIC MANIFOLD VALVE ASSY
USE THIS DIAGRAM FOR SPREADERS WITH DUAL HYD MANIFOLDS**



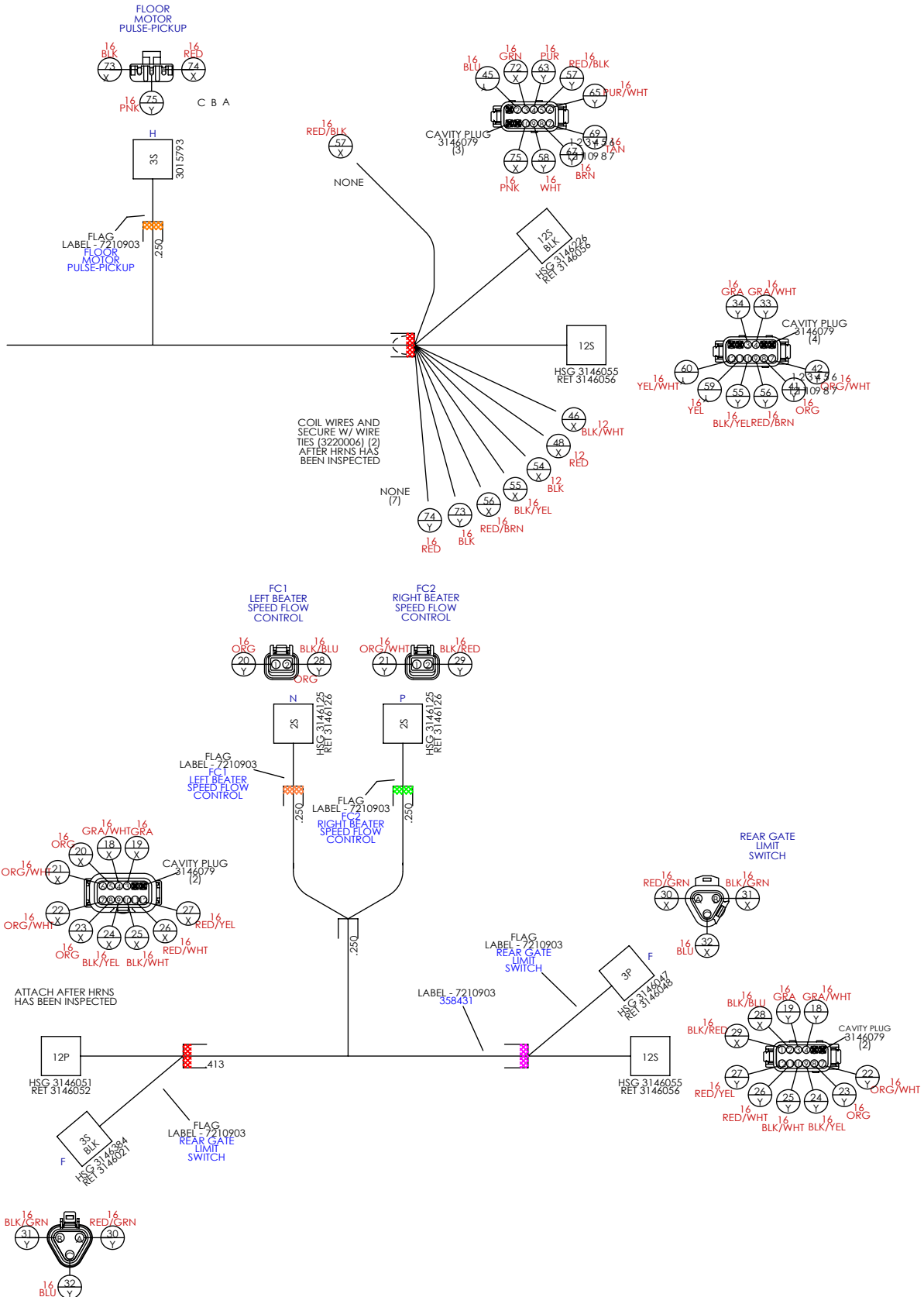
**702-17 & 802-19 HYDRAULIC MANIFOLD VALVE ASSY
USE THIS DIAGRAM FOR SPREADERS WITH DUAL HYD MANIFOLDS**

ITEM #	PART #	DESCRIPTION	QTY.
1	362255	VALVE, SOLENOID - 3 WAY #SV08-30M-0-N-12-ER	3
2	362371	SOLENOID, PROP-N/C VALVE, # SP12-20-M-0-12-ER	1
3	362382	MANIFOLD, 702/802 BEATER DRIVE	1
4	362383	MANIFOLD, FLOOR/GATE (702/802) LOAD SENSE	1
5	362399	SOLENOID VALVE, (VICKERS #SP12-20-C-0-00)	2
6	362412	SOLENOID, N/C VALVE, #SV08-22M-0-12-ER	1
7	366006	HOSE, 3/8" (366006 AS REQ'D)	AR
8	366008	HOSE, 1/2" (366008 AS REQ'D)	AR
9	366032	HOSE, 3/4' (366032 AS REQ'D)	AR
10	366041	HOSE, 1" (366041 AS REQ'D)	AR
11	366045	HOSE, 1" (366045 AS REQ'D)	AR
12	367063	HOSE COUPLING 3/8" x 6G-6FFORX	3
13	367080	HOSE COUPLING, 3/8" x 11/16"FFORX90S	1
14	367080L	HOSE COUPLING 3/8" x 6G-6FFORX90L	1
15	367098	HOSE COUPLING 1/2" x 13/16"FFORX90S	1
16	367099	HOSE COUPLING 1/2" x 8G-8FFORX90L	1
17	367100	HOSE COUPLING 1/2" x 13/16"FFORX	1
18	367135	HOSE STEM 1" x 16GS-16FFORX	4
19	367137	HOSE COUPLING 1" x 16G-16FFORX	4
20	367141	HOSE COUPLING, 3/4"x 1-3/16 FFFORX	2
21	367142	HOSE COUPLING 3/4" x 1-3/16"FFORX90S	2
22	367415	FERRULE, 16GS1F-4	4
23	368098	90° ELBOW, 11/16" ORFS x 9/16" MOR	2
24	368193	STRAIGHT ADAPTER, 1-7/16" ORFS x 1-5/16" MORB	8
25	368194	STRAIGHT ADAPTER, 13/16" ORFS x 3/4" MORB	2
26	368197	STRAIGHT ADAPTER, 11/16" FFOR x 3/4" MORB	2
27	368303	90° ELBOW, 3/4" MOR x 13/16" FFOR	1
28	368468	STRAIGHT ADAPTER, 1"-14 FFOR x 7/8" MORB	4
29	368693	90° ELBOW, 9/16" MOR x 9/16" FOR	2
30	368708	90° ELBOW, 11/16" ORFS x 7/16" MOR	1
31	407900	HHCS 3/8"-16 x 3/4" SERRATED #5 PLTD	8
32	450766	TRANSDUCER, 6000 PSI, HYDAC HDA 847K-R-6000	3
33	781751	HOSE ASSY, 1" x 1-7/16 FFORX x 1-7/13 FFORX	1
34	781752	HOSE ASSY, 1" x 1-7/16 FFORX x 1-7/16 FFORX	1
35	781753	HOSE ASSY 1" x 1-7/16 FFORX x 1-7/16 FFORX90S	1
36	781754	HOSE ASSY, 1" x 1-7/16 FFORX x 1-7/16 FFORX	1
37	781765	HOSE ASSY, 3/8" x 9/16 FJX x 11/16 FFORX90S	1
38	781766	HOSE ASSY, 3/8" x 9/16 FJX x 11/16 FFORX90L	1
39	781767	HOSE ASSY, 3/4" x 1-3/16 FFORX x 1-3/16 FFORX	1
40	830423	MOUNTING BRACKET W/A, MANIFOLD	1

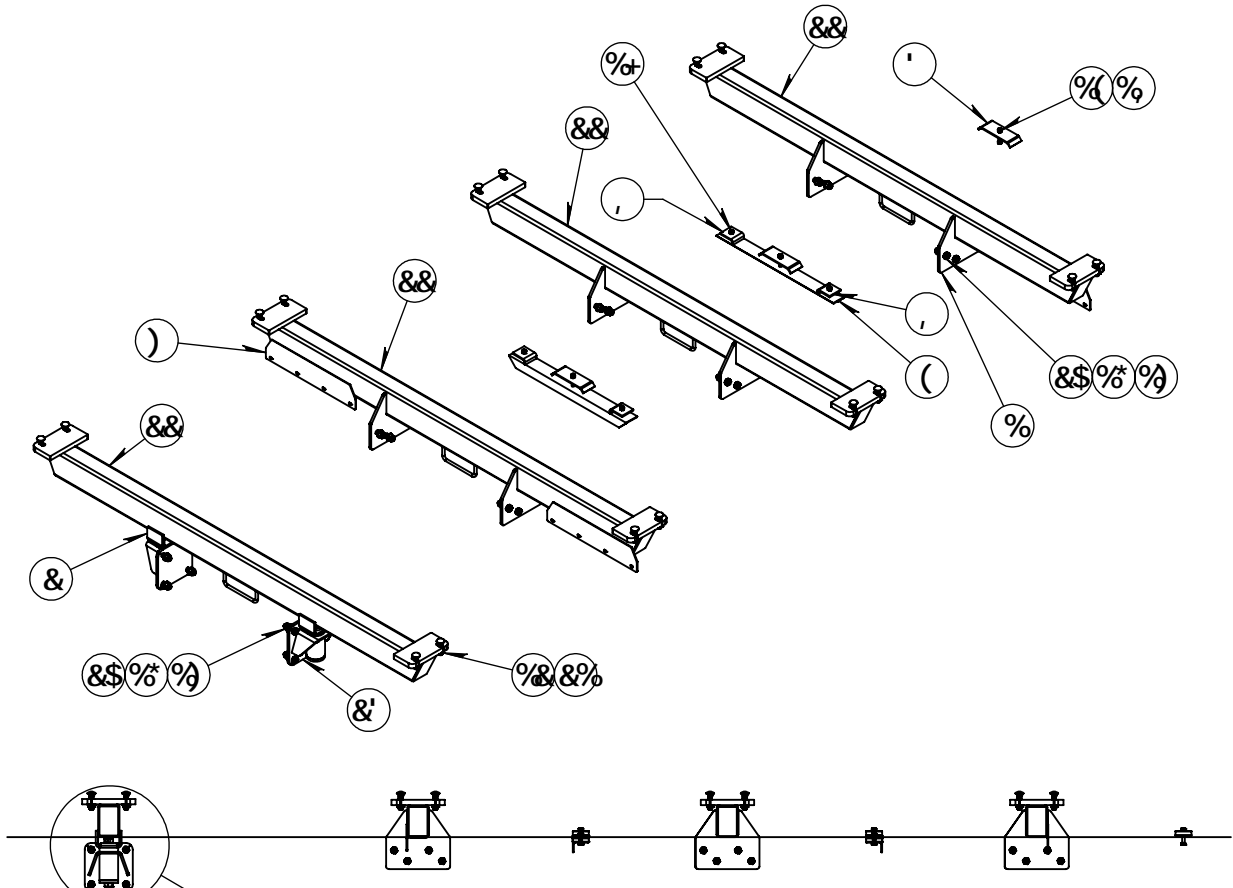
702-17 & 802-19 TRUCK SPREADER WIRING HARNESS (#358429) DIAGRAM



702-17 & 802-19 TRUCK SPREADER WIRING HARNESS (#358429) DIAGRAM

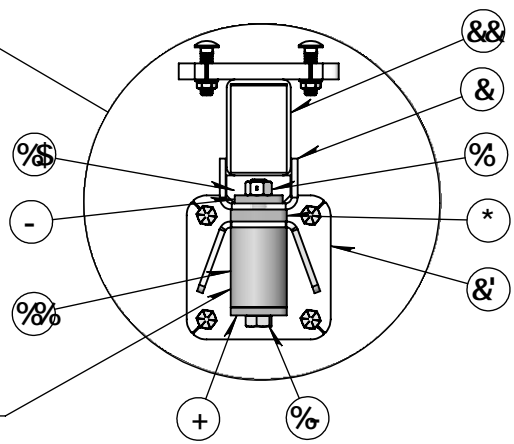


702-17 & 802-19 TRUCK SPREADER MOUNT KIT



G89J 9K

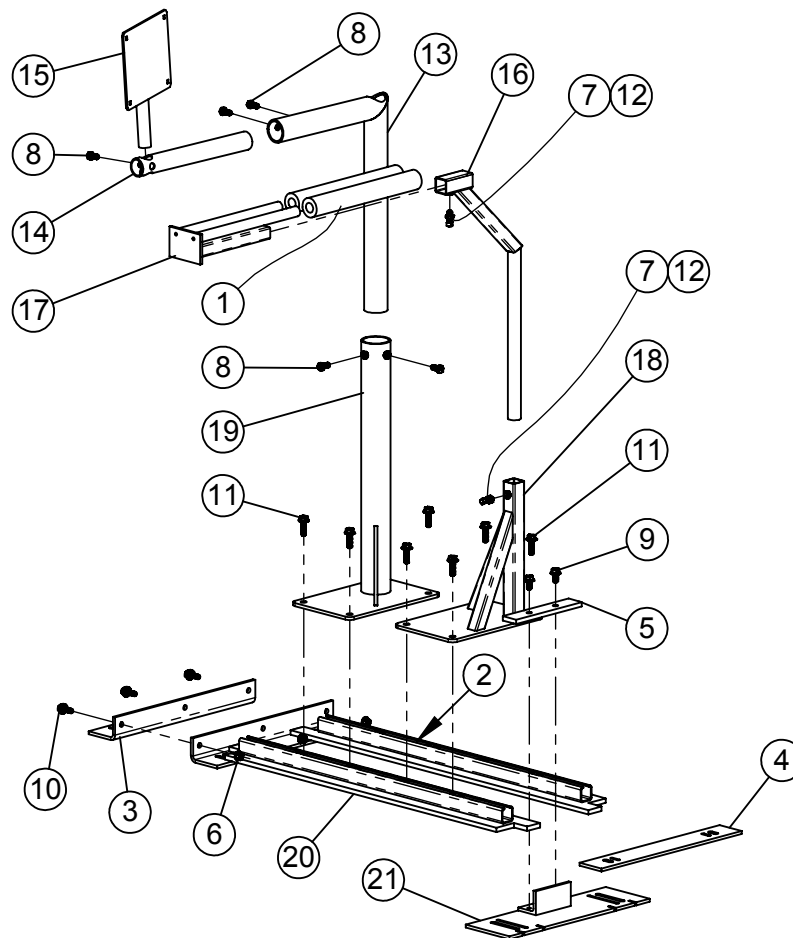
H# <H#B' (\$), (%) <<7 G
 I BH@')%,, i F9k5B9
 GDF-B; :GGBI; ""
 H#9B H# <H#B' (\$), (%) ..
 <<7G%#&H FB'A CF9



702-17 & 802-19 TRUCK SPREADER MOUNT KIT

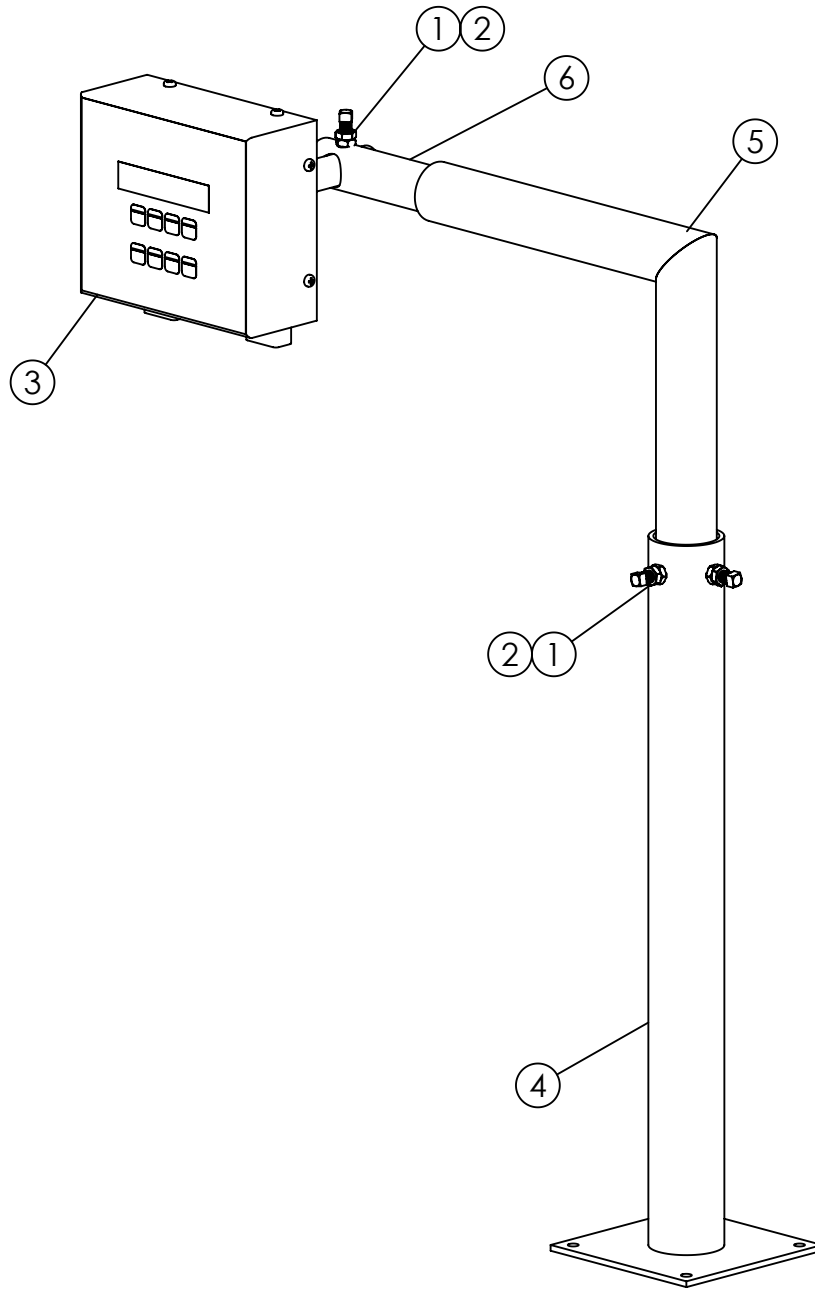
#	Part #	Description	Quantity
1	130618	PLATE, SPREADER TRUCK MOUNT, 12" x 11"	6
2	130779	802 MOUNTING TUBE SUPPORT, 4" x 10"	2
3	130782	802 HOSE CLAMP, 3" x 9"	3
4	130784	802 HOSE SUPPORT, 31"	2
5	130795	MUD FLAP BRACKET, 3" x 23 3/4"	4
6	130796	802 UHMW MOUNT PAD, 3/4"	2
7	130797	802 WASHER, 1/2" x 1-1/16" x 3-1/2"	2
8	130798	802 HOSE SUPPORT CLAMP, 4"	4
9	130956	802 WASHER, 1/2" x 1-1/16" x 3"	2
10	130957	PLATE, 1-3/4" x 4" LG	2
11	351988	PIRANHA URETHANE STRIPPER SPRING	2
12	400116	HEX SERRATED FLANGE NUT, 3/4"-10, #5 PLTD	16
13	400916	HEX TWO-WAY LOCKNUT, 1"-8, #5 PLTD	2
14	401108	HEX NYLOC NUT, 1/2"-13, #5 PLTD	7
15	401212	HEX NYLOCKNUT, 3/4"-16	32
16	402512	SAE FLAT WASHER, 3/4"	32
17	405704	HHCS, 1/2"-13 x 1-3/4", #5 PLTD	4
18	405708	HHCS, 1/2"-13 x 2 3/4", #5 PLTD	3
19	405841.5	HHCS, 1" x 8-1/2", #5 PLTD	2
20	406481	HHCS, 3/4"-10 x 2-1/2", #5 PLTD	32
21	407142	CARRIAGE BOLT, 3/4" x 3", #5 PLTD	16
22	830310	802 MOUNTING CROSSMEMBER W/A	4
23	830314	802 URETHANE MOUNTING BRACKET W/A	2

TRUCK CAB SCALE INDICATOR FRAME PARTS



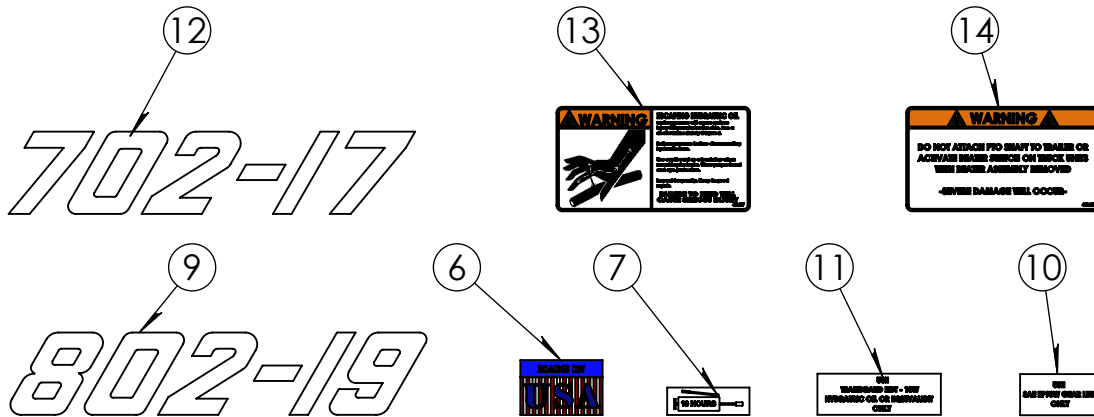
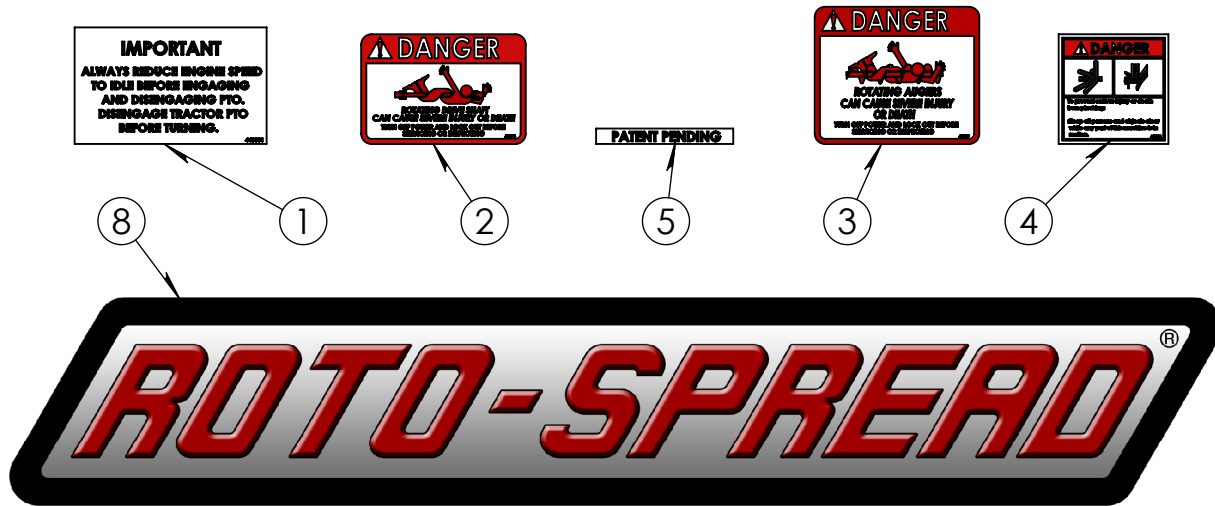
ITEM #	PART #	DESCRIPTION	QTY.
1	185930	ARM REST PAD 12"	2
2	192578	ARM REST SLIDE BAR	4
3	192585	BRACKET, PASSENGER CAB SEAT	1
4	192587	SPACER, TRUCK CAB DRIVER'S SEAT	1
5	192593	PLATE, TRUCK CAB MOUNT SETTING	1
6	400107	HEX NUT, 3/8"-16 SERRATED FLANGE #5	3
7	400606	HEX JAM NUT 3/8-16"	2
8	405652	HHCS 3/8"-16 x 3/4" #5 PLTD	5
9	407900	HHCS 3/8"-16 x 3/4" SERRATED #5 PLTD	2
10	407901	HHCS 3/8"-16 X 1" SERRATED #5 PLTD	3
11	407904	HHCS 3/8"-16 x 1-1/4" SERRATED #5 PLTD	8
12	409543	SQ HD SET SCREW CUP, 3/8" x 1"	2
13	871095	TRUCK SCALE INDICATOR MOUNT W.A.	1
14	871103	INDICATOR EXTENSION TUBE W.A.	1
15	871111	TRUCK SCALE INDICATOR SWIVEL W.A.	1
16	872263	ARM REST GOOSE NECK W.A.	1
17	872264	ARM REST W.A.	1
18	873389	SHORT ARM REST STAND W.A.	1
19	873390	SHORT TRUCK SCALE IND. BASE W.A.	1
20	873391	BASE, TRUCK CAB MOUNT WA	1
21	873394	BRACKET, DRIVER'S SEAT WA	1

702-17 & 802-19 TRUCK SPREADER CONTROLLER & STAND



#PART	D5FH	89G7 F-DHC B	EQMT
1	400606	HEX JAM NUT 3/8-16"	3
2	409543	SQ HD SET SCREW CUP, 3/8" x 1"	3
3	452077	CONTROLLER, 802 SPREADER	1
4	871087	TRUCK SCALE INDICATOR BASE W.A.	1
5	871095	TRUCK SCALE INDICATOR MOUNT W.A.	1
6	871103	INDICATOR EXTENSION TUBE W.A.	1

702-17 & 802-19 TRUCK SPREADER DECALS



Part #	D5FH	89G7 F-DHC B	E HM
1	440801	DECAL, REDUCE ENGINE SPEED 4-1/4" x 7"	1
2	440826	DECAL, DANGER: ROTATING DRIVE SHAFT	1
3	440827	DECAL, DANGER: ROTATING AUGERS	1
4	440833	DECAL, DANGER PINCH POINT 4" x 4"	1
5	440841	DECAL, PATENT PENDING 5/8" x 5"	1
6	440844	DECAL, MADE IN USA	1
7	440931	DECAL, GREASE GUN DECAL, 10 HOURS	1
8	440939	DECAL, ROTO-SPREAD	1
9	440953	DECAL 802-19 (ROTO-SPREAD)	1
10	440955	DECAL, USE E90W GEAR LUBE ONLY	1
11	440956	DECAL, USE 10W HYD OIL, UNIV TO-4	1
12	440965	DECAL, 702-17 (ROTO-SPREAD)	1
13	441657	DECAL, WARNING ESCAPING HYD OIL	1
14	441663	DECAL, WARNING DO NOT ATTACH PTO SHAFT	1

This Page intentionally left blank.