

# FDB-15,17,19,21,23 TRUCK FEED DELIVERY BOX

## SAFETY, OPERATION & PARTS MANUAL



**FSI Fabrication, LLC** a wholly owned subsidiary of  
**Roto-Mix, LLC**  
**P.O. BOX 1724**  
**2205 E. Wyatt Earp Blvd.**  
**Dodge City, Kansas 67801**  
**(620) 225-1142**

©ROTO-MIX 2006

SERIAL NUMBER \_\_\_\_\_

# TABLE OF CONTENTS

<b>DESCRIPTION</b>	<b>PAGE NO.</b>
WARRANTY .....	3
SCALES WARRANTY & SERVICE POLICY .....	4
OPERATOR QUALIFICATIONS.....	5
SAFETY.....	6-16
LOADING INSTRUCTIONS.....	17
OPERATING INSTRUCTIONS.....	17
MAINTENANCE.....	18
LUBRICATION.....	19
SPECIFICATIONS.....	20
REPAIR PARTS TABLE OF CONTENT .....	21
REPAIR PARTS PAGES .....	22-29
FDB SERVICE NOTES & TROUBLE SHOOTING .....	30-34



## Limited Warranty Statement

ROTO-MIX LLC warrants to the original purchaser all products manufactured by it to be free from defects in material and workmanship under normal use and service.

ROTO-MIX's obligation under this warranty is limited to repairing or replacing, as the company may elect, free of charge and without charge for installation, at the place of business of a dealer or distributor authorized to handle the equipment covered by this warranty or at a ROTO-MIX plant, any parts that prove, in the company's judgment, to be defective in material or workmanship within one (1) year after delivery to the original purchaser, and still owned by the original purchaser. This warranty shall in no way make ROTO-MIX liable to anyone for personal injuries or damages, loss of time, or expense of any kind either direct or indirect resulting from part failure or defect. This warranty is subject to acts of God, fire and existing conditions of supply and demand, or production, or ability or inability to deliver, or for any other valid reason beyond the reasonable control of ROTO-MIX, to obtain materials, manufactured replacement parts, or make delivery thereof. No distributor, dealer, agent, or ROTO-MIX employee (other than the CEO or President in writing) is authorized to extend any other or further express or implied warranty or incur any additional obligation on ROTO-MIX's behalf in connection with the sale of this product.

### Customer Responsibility

**Product Registration** - It is a condition of this warranty that the original purchaser must fill out the warranty card furnished by ROTO-MIX and that it be returned to ROTO-MIX and be recorded in ROTO-MIX's owner file for this warranty to be valid. In the event an owner's card is not on file at the ROTO-MIX office, the warranty period will extend only from date equipment was picked up or shipped from the ROTO-MIX plant.

**Maintenance** - It is the customer's responsibility to maintain their equipment in accordance with the instructions provided in the Operator's Manual. ROTO-MIX recommends that you keep records and receipts; you may be asked to prove that maintenance instructions have been followed.

**Operation** - It is the customer's responsibility to operate the equipment only for the purpose for which it was designed and in accordance with all safety and operational recommendations contained in the Operators Manual. If a defect in materials or workmanship occurs, it is the customer's responsibility to cease operating the equipment until authorized repairs are made. **Damage, which occurs from continued operation, may not be covered by this warranty.**

### What this Warranty Covers

This warranty covers failures caused by defects in materials or workmanship only.

#### This Warranty does not cover failures caused by:

- Improper operation
- Natural calamities
- Unauthorized modifications
- Unauthorized repairs
- Use of Non ROTO-MIX parts
- Neglected maintenance
- Usage contrary to the intended purpose of the product

#### This Warranty does not cover replacement of Wear or Maintenance Items (unless defective) including, but not limited to.

- Lubricants
- Filters
- Hoses
- Tires
- Augers
- Wipers
- Chains
- Idlers
- Blades
- Belts

#### This Warranty does not cover:

- Pickup and delivery of the equipment
- Service Calls or Travel Time to and from sites
- Rental of replacement equipment during repair period
- Products that have been declared a total loss and subsequently salvaged
- Overtime labor charges

### Right to Make Changes

ROTO-MIX reserves the right to make any changes to a ROTO-MIX product at any time without incurring any obligation with respect to any product previously ordered, sold or shipped, with or without notice.

### Parts Warranty

ROTO-MIX warranties replacement parts against defects in materials or workmanship for a period of 90 days or the remainder of the product warranty, whichever is longer. Remedy for defective replacement parts for units that are beyond the original product warranty, will be limited to replacement of the failed part. Failures that are due to damage, improper installation, lack of maintenance or improper operation will not be covered.

## **SCALES WARRANTY & SERVICE POLICY**

### **TOPCON/DIGI-STAR SCALE SYSTEMS**

Digi-Star, LLC warrants for a period of one year from date of installation, to correct by repair or replacement, at Digi-Star's option, any defect in material or workmanship in any part of this product. In the event of replacement, Digi-Star's sole obligation shall be to provide replacement products or parts. F.O.B. Topcon/Digi-Star, LLC, W5527 Hwy 106, Fort Atkinson, WI 53538 USA.

## OPERATOR QUALIFICATIONS

Operation of this feeder box shall be limited to competent and experienced persons. In addition, anyone who will operate or work around a feeder box must use good common sense. In order to be qualified, he or she must also know and meet all other qualifications, such as:

1. Some regulations specify that no one under the age of sixteen (16) may operate power machinery. It is your responsibility to know what these regulations are in your area and/or situation.
2. Current OSHA regulations state in part: At the time of initial assignment and at least annually thereafter, the employer shall instruct **EVERY** employee in the safe operation and servicing of all equipment with which the employee is, or will be involved.
3. Unqualified persons are to **STAY OUT OF THE WORK AREA.**
4. A person who has not read and understood all operating and safety instructions is not qualified to operate the machinery.

**FAILURE TO READ THIS FEEDER BOX MANUAL AND ITS SAFETY INSTRUCTIONS IS A MISUSE OF THE EQUIPMENT.**



## SAFETY

**TAKE NOTE!** THIS SAFETY ALERT SYMBOL FOUND THROUGHOUT THIS MANUAL IS USED TO CALL YOUR ATTENTION TO INSTRUCTIONS INVOLVING YOUR PERSONAL SAFETY AND THE SAFETY OF OTHERS. FAILURE TO FOLLOW THESE INSTRUCTIONS CAN RESULT IN INJURY OR DEATH.



**THIS SYMBOL MEANS**

**-ATTENTION!**

**-BECOME ALERT!**

**-YOUR SAFETY IS INVOLVED!**

**SIGNAL WORDS:** Note the use of the signal words **DANGER**, **WARNING**, and **CAUTION** with the safety messages. The appropriate signal word for each has been selected using the following guidelines:

**DANGER:** Indicates an imminently hazardous situation that, if not avoided, will result in serious injury or death. This signal word is to be limited to the most extreme situations typically for machine components which, for functional purposes, cannot be guarded.

**WARNING:** Indicates a potentially hazardous situation that, if not avoided, will result in serious injury or death, and includes hazards that are exposed when guards are removed. It may also be used to alert against unsafe practices.

**CAUTION:** Indicates a potentially hazardous situation that, if not avoided, may result in minor or moderate injury. It may also be used to alert against unsafe practices.

If you have questions not answered in this manual or require additional copies or the manual is damaged, please contact your dealer or ROTO-MIX, 2205 E. Wyatt Earp, Dodge City, Kansas, 67801. (Telephone) 620-225-1142 (Fax) 620-225-6370

## **SAFETY FIRST**

**REMEMBER:** The careful operator is the best operator. Most accidents are caused by human error. Certain precautions must be observed to prevent the possibility of injury or death.



**DO NOT ALLOW PERSONNEL OTHER THAN THE QUALIFIED OPERATOR NEAR THE MACHINE.**



**NEVER START MACHINE UNTIL ALL GUARDS AND SAFETY SHIELDS ARE IN PLACE.**



**DO NOT CLEAN, ADJUST OR LUBRICATE THE MACHINE WHILE IT IS IN MOTION.**



**LOOSE OR FLOPPY CLOTHING SHOULD NOT BE WORN BY THE OPERATOR.**

### **OPERATING PRECAUTIONS & INSTRUCTIONS:**

- A. Check to see that no obstructions are present in the feeder box prior to start up.
- B. Before loading, run the feeder box empty and check all operations.
- C. Do not overload the feeder box, unit damage may occur. (See loading instructions).
- D. Be sure all shields are in place before operation.
- F. Use common sense when operating.



## EQUIPMENT SAFETY GUIDELINES

Safety of the operator is one of the main concerns in designing and developing a new piece of equipment. Designers and manufactures build in as many safety features as possible. However, every year many accidents occur which could have been avoided by a few seconds of thought and a more careful approach to handling equipment. You, the operator, can avoid many accidents by observing the following precautions in this section. To avoid personal injury, study the following precautions and insist those working with you, or for you, follow them.

In order to provide a better view, certain photographs or illustrations in this manual may show an assembly with a safety shield removed. However, equipment should never be operated in this condition. Keep all shields in place. If shield removal becomes necessary for repairs, replace the shield prior to use.

Replace any CAUTION, WARNING, DANGER or instruction safety decal that is not readable or is missing. Location of such decals are indicated in this manual.

Do not attempt to operate this equipment under the influence of drugs or alcohol.

Review the safety instructions with all users annually.

This equipment is dangerous to children and persons unfamiliar with its operation. The operator should be a responsible adult familiar with farm machinery and trained in this equipment's operations. Do not allow persons to operate or work on this unit until they have read this manual and have developed a thorough understanding of the safety precautions and of how it works.

To prevent injury or death, do not paint over, remove or deface any safety signs or warning decals on your equipment. Observe all safety signs and practice the instructions on them.

Never exceed the limits of a piece of machinery, in its ability to do a job, or to do so safely, if in question - **DON'T TRY IT.**



## LIGHTING AND MARKING

It is the responsibility of the customer to know the lighting and marking requirements of the local highway authorities and to install and maintain the equipment to provide compliance with the regulations. Add extra lights when transporting at night or during periods of limited visibility.





---

## KEEP ALL SHIELDS IN PLACE

Do not operate feeder box without safety shields in place.

Rotating parts can crush or dismember causing personal injury or death.

Disengage power supply and turn off engine before removing shields for adjustment or service.



---

## OPERATE FEEDER BOX SAFELY

Rotating parts can entangle or strike people, resulting in personal injury or death.

Never enter a feeder box while in operation.

Operate the feeder box from the operator's seat only.

Do not exceed load capacity of the feeder box. (See loading instructions).

Reduce speed when turning or traveling on rough terrain.

Avoid traveling over loose fill, rocks, ditches or holes.

Keep transmissions in gear when traveling downhill.



---

## KEEP RIDERS OFF FEEDER BOX

Keep riders off.

Riders are subject to injury such as being struck by foreign objects and being thrown off. Riders also obstruct the operator's view resulting in the machine being operated in an unsafe manner.



---

## PREVENT BATTERY EXPLOSIONS

Keep sparks, lighted matches, and open flame away from the top of battery. Battery gas can explode.

Never check battery charge by placing a metal object across the posts. Use a volt-meter or hydrometer.

Do not charge a frozen battery; it may explode. Warm battery to 16C (60F)



---

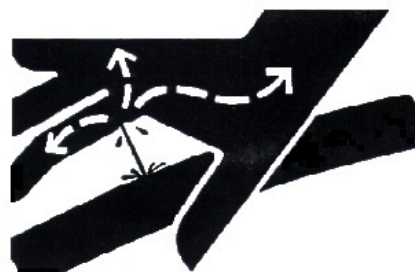
## AVOID HIGH-PRESSURE FLUIDS

Escaping fluid under pressure can penetrate the skin causing serious injury or death.

Avoid the hazard relieving pressure before disconnecting hydraulic or other lines. Tighten all connections before applying pressure.

Search for leaks with a piece of cardboard. Protect hands and body from high pressure fluids.

If an accident occurs, see a doctor immediately. Any fluid injected into the skin must be surgically removed within a few hours or gangrene may result. Doctors unfamiliar with this type of injury should reference a knowledgeable medical source.





## **PRACTICE FIRE PREVENTION**

Keep fire extinguishers accessible at all times. Use the extinguisher recommended for the material being processed. It should be rated safe for use on electrical fires.

Never smoke close to combustible material.

Clean the area before welding or other activities which may make sparks.

Keep all components that generate excessive heat clear of oil and other combustible materials.



## **SAFETY DECAL CARE**

Keep safety decals and signs clean and legible at all times.

Replace safety decals and signs that are missing or have become illegible.

Replaced parts that displayed a safety sign should also display the current sign.

Safety decals or signs are available from your dealer or the ROTO-MIX manufacturing plant.

### **How to Install Safety Decals:**

Be sure that the installation area is clean and dry.

Decide on the exact position before you remove the backing paper.

Remove the smallest portion of the split backing paper.

Align the decal over the specified area and carefully press the small portion with the exposed sticky backing in place.

Slowly peel back the remaining paper and carefully smooth the remaining portion of the decal in place.

Small air pockets can be pierced with a pin and smoothed out using the piece of decal backing paper.



## **REMEMBER**

**Your best assurance against accidents is a careful and responsible operator. If there is any portion of this manual or function you do not understand, contact your dealer or the ROTO-MIX plant.**

### **BEFORE OPERATION:**

Carefully study and understand this manual.

Do not wear loose-fitting clothing which may catch in moving parts.

Always wear protective clothing and substantial shoes.

Keep wheel lug nuts or bolts tightened to specified torque.

Assure that all tires are inflated to the tire manufactures specifications.

Give the unit a visual inspection for any loose bolts, worn parts or cracked welds, and make necessary repairs. Follow the maintenance safety instructions included in this manual.

Be sure that there are no tools lying on or in the feeder box.

Do not use the unit until you are sure that the area is clear, especially children and animals.

Because it is possible that this feeder box may be used in dry areas or the presence of combustibles, special precautions should be taken to prevent fires and fire fighting equipment should be readily available.

Don't hurry the learning process or take the unit for granted. Ease into it and become familiar with your new feeder box.

Practice operation of your feeder box and its attachments. Completely familiarize yourself and other operators with its operation before using.



## DURING OPERATION:

Beware of bystanders, **particularly children!** Always look around to make sure that it is safe to start the engine of the vehicle or move the unit. This is particularly important with higher noise levels and quiet cabs, as you may not hear people shouting.

**NO PASSENGERS ALLOWED** - Do not carry passengers anywhere on, or in, the truck or equipment, except as required for operation.

Keep hands and clothing clear of moving parts.

Do not clean, lubricate or adjust your feeder box while it is moving.

Be especially observant of the operating area and terrain - watch for holes, rocks or other hidden hazards. Always inspect the area prior to operation.

**Do not** operate near the edge of drop-offs or banks.

**Do not** operate on steep slopes as overturn may result.

**Operate** up and down (not across) intermediate slopes. Avoid sudden starts and stops.

Pick the levellest possible route when transporting across fields. Avoid the edges of ditches or gullies and steep hillsides.

Be extra careful when working on inclines.

Periodically clear the equipment of brush, twigs or other materials to prevent buildup of dry combustible materials.

Maneuver the equipment at safe speeds.

Avoid overhead wires or other obstacles. Contact with overhead lines could cause serious injury or death.

Avoid loose fill, rocks and holes; they can be dangerous for equipment operation or movement. Allow for unit length when making turns.

Do not walk or work under raised components or attachments unless securely positioned and blocked.

Keep all bystanders, pets and livestock clear of the work area.

Operate the equipment from the operator's seat only.

Never stand alongside of the unit with engine running. Never attempt to start engine and/or operate machine while standing alongside of unit.



## **DURING OPERATION (CONT.):**

Never leave running feeder box unattended.

As a precaution, always recheck the hardware on feeder following every 100 hours of operation. Correct all problems. Follow the maintenance safety procedures.



## **FOLLOWING OPERATION:**

Following operation, stop the equipment, set the brakes, disengage all power drives, shut off the engine and remove the ignition keys.

Store the unit in an area away from human activity.

Do not park equipment where it will be exposed to livestock for long periods of time. Damage and livestock injury could result.

Do not permit children to play on or around the stored unit.

Make sure parked machine is on a hard, level surface and engage all safety devices.



## **HIGHWAY AND TRANSPORT OPERATIONS:**

Adopt safe driving practices:

Always drive at a safe speed relative to local conditions and ensure that your speed is low enough for an emergency stop to be safe and secure. Keep speed to a minimum.

Reduce speed prior to turns to avoid the risk of overturning.

Avoid sudden uphill turns on steep slopes.

Do not coast with truck in neutral position.

Do not drink and drive.

Comply with state and local laws governing highway safety and movement of farm machinery on public roads.

Use approved accessory lighting, flags and necessary warning devices to protect operators of other vehicles on the highway during daylight and nighttime transport.

The use of flashing amber lights is acceptable in most localities. However, some localities prohibit their use. Local laws should be checked for all highway lighting and marking requirements.



## **HIGHWAY AND TRANSPORTIONS (CONT.):**

When driving the feeder box on the road or highway under 20 MPH (40 KPH) at night or during the day, use flashing amber warning lights and a slow moving vehicle (SMV) identification emblem.

Plan your route to avoid heavy traffic.

Be a safe courteous driver. Always yield to oncoming traffic in all situations, including narrow bridges, intersections, etc.

Be observant of bridge loading ratings. Do not cross bridges rated lower than the gross weight at which you are operating.

Watch for obstructions overhead and to the side while transporting.

Always operate feeder box in a position to provide maximum visibility at all times. Make allowances for increased length and weight of the feeder box when making turns, stopping the unit, etc.



## **PERFORMING MAINTENANCE:**

Good maintenance is your responsibility. Poor maintenance is an invitation to trouble.

Make sure there is plenty of ventilation. Never operate the engine of the vehicle in a closed building. The exhaust fumes may cause asphyxiation.

Before working on the feeder box, stop the vehicle, set the brakes, disengage all power drives, shut off the engine and remove the ignition keys.

Be certain all moving parts on attachments have come to a complete stop before attempting to perform maintenance.

Always use a safety support and block the wheels. Never use a jack to support the machine.

Always use the proper tools or equipment for the job at hand.

Use extreme caution when making adjustments.

Never use your hands to locate hydraulic leaks on attachments. Use a small piece of cardboard or wood. Hydraulic fluid escaping under pressure can penetrate the skin.

When disconnecting hydraulic lines, shut off hydraulic supply and relieve all hydraulic pressure.

Openings in the skin and minor cuts are susceptible to infection from hydraulic fluid. If injured by escaping hydraulic fluid, see a doctor at once.



## PERFORMING MAINTENANCE(CONT.):

Gangrene can result. Without immediate treatment, serious infection and reactions can occur.

Replace all shields and guards after servicing and before moving.

After servicing, be sure all tools, parts and service equipment are removed.

Do not allow grease or oil to build up on any step or platform.

Never replace hex bolts with less than grade five (5) bolts unless otherwise specified.

Where replacement parts are necessary for periodic maintenance and servicing, genuine factory replacement parts must be used to restore your equipment to original specifications. ROTO-MIX will not claim responsibility for use of unapproved parts and/or accessories and other damages as a result of their use.

If equipment has been altered in any way from original design, ROTO-MIX does not accept any liability for injury or warranty.

A fire extinguisher and first aid kit should be kept readily accessible while performing maintenance on this feeder box.



## READ THE FOLLOWING BEFORE WELDING ON THIS FEEDER BOX

When welding on your feeder box, do not allow the current to flow through the ball bearings or the conveyor chains. Ground directly to the item being welded.

Always disconnect the scale instrumentation from the weigh bars or load cells and the power source. Be sure the current does not pass through weigh bars or load cells or scale indicator. The alternator should always be disconnected.

**⚠ WARNING** APPLY THE PARKING BRAKE, TURN OFF ENGINE AND REMOVE IGNITION KEY BEFORE CLEANING, ADJUSTING, LUBRICATING OR SERVICING THIS MACHINE.



# **PRE-OPERATION INSTRUCTIONS**

## **PREOPERATION CHECK LIST:**

Check all bearings for alignment and tightness of locking collars.

Check all guards for proper fit and latch tension.

Check gearbox for proper oil level.

Grease all bearings.

Check floor chain and floor chain take-up assemblies for proper tension and alignment.

Check for proper installation of rear floor chain guards.

Review proper machine operation and maintenance.

## **RUN UNIT AND CHECK THE FOLLOWING;**

Check for vibration in beater assemblies.

Check for proper floor chain adjustment and alignment.

# **OPERATING & MAINTENANCE AWARENESS**

Anyone who will be operating and/or maintaining FSI Fabrication, Inc. machinery must read and clearly understand ALL Safety, Operating and Maintenance information presented in this manual.

Do not operate or allow anyone else to operate this equipment until such information has been reviewed. In addition, once a year review this information.

Make these periodic reviews of SAFETY and OPERATION a standard practice of all of your equipment , we feel that an untrained operator is unqualified to operate this machine.

All personnel who operate this equipment must read and understand the information in the Operator's Manual and must be instructed in the operation of the equipment.

# **LOADING INSTRUCTIONS & PRECAUTIONS**

Loading the material height evenly from the front to the rear of the box will result in a smoother and steadier flow of material when spreading.

## **MAINTANENCE**

**DISENGAGE PTO & SHUT OFF POWER BEFORE SERVICING OR LUBRICATING THE MACHINE.**

**DISENGAGE PTO & SHUT OFF POWER BEFORE SERVICING OR LUBRICATING THE MACHINE.**

**DO NOT WEAR LOOSE FITTING CLOTHING THAT MAY CATCH IN MOVING PARTS.**

**Oil Specification: (CITGO TRANSGARD TRACTOR HYDRAULIC FLUID - Material Code 633310001) or equivalent.**

Maximum allowable operating temperature 240°F.

Check the oil level in the reservoir daily. It should be maintained 1" from the top of the sight gauge.

Oil is added through a filter screen inside the filler neck. Before filling, remove the screen, inspect, clean and replace if required. After replacing screen add oil to proper level.

All filters should be changed the first 24 hours after start up of the system, then after the running-in period (50-100 hours of service) and during normal maintenance every 300 - 500 hours of service. Carefully clean dirt from the return filter head and replace the filter element with.

Drain reservoir and refill with new oil every 2000 hrs or annually, whichever occurs first. If the oil becomes contaminated and appears milky colored, replace immediately.

Every 100 hrs of operation, inspect all hydraulic hoses, hose connections, pump seals and motor seals for leakage. Tighten loose connections and replace damaged components.

A valve is provided at the bottom of the reservoir where the suction hose is connected. Turn this valve off to service hydraulic components. This prevents draining of the reservoir, however it is necessary to catch the oil that drains from disconnected hoses into a suitable container for proper disposal. Always check and refill the reservoir as required when servicing is completed.

Always clean around hydraulic components, hose fittings and filters before removal and cap any open ports and hose ends to insure no contamination can infiltrate the system.

ITEM	LUBRICATION	INTERVAL
Conveyor Chain	Light Weight Oil	Brush or spray on lightly every 40 hours of operation
Conveyor Bearings	Good Quality Grease	One pump every 10 hours of operation
Truck Hydrostat Reservoir	<b>CITGO TRANSGARD TRACTOR HYDRAULIC FLUID - Material Code 633310001 or equivalent</b>	2000 hours or every 12 months, whichever comes first
Oil Filters		<ol style="list-style-type: none"> <li>1. 24 hours after start up of the system.</li> <li>2. After the running-in period (50-100 hours of service).</li> <li>3. Normal maintenance every 300-500 hours of service.</li> </ol>

## SPECIFICATIONS

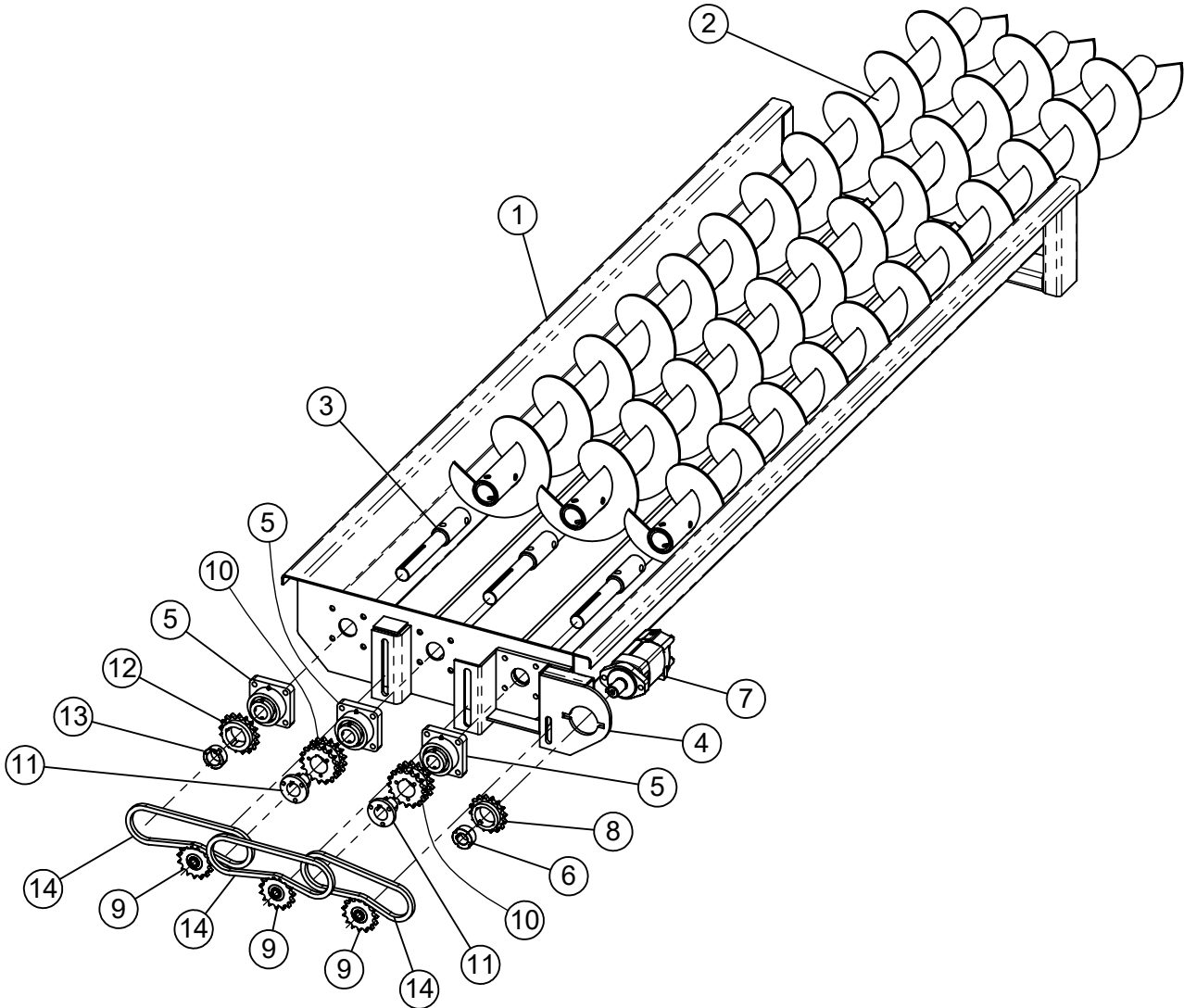
<b>Specifications and Dimensions - Without Extensions</b>						
	Inside			Overall		With 40" Truck Frame Ht
	Length	Width	Height	Length	Width	
<b>15' - FDB Feed Delivery Box-Truck</b>	180"	90"	72"	220"	121"	130"
<b>17' - FDB Feed Delivery Box-Truck</b>	204"	90"	72"	244"	121"	130"
<b>19' - FDB Feed Delivery Box-Truck</b>	228"	90"	72"	268"	121"	130"
<b>21' - FDB Feed Delivery Box-Truck</b>	252"	90"	72"	292"	121"	130"
<b>23' - FDB Feed Delivery Box-Truck</b>	276"	90"	72"	316"	121"	130"

<b>Capacity - Struck Level - Cu. Ft.</b>			
	No Ext.	12" Ext.	18" Ext.
<b>15' - FDB Feed Delivery Box-Truck</b>	713	831	891
<b>17' - FDB Feed Delivery Box-Truck</b>	808	942	1009
<b>19' - FDB Feed Delivery Box-Truck</b>	903	1053	1128
<b>21' - FDB Feed Delivery Box-Truck</b>	998	1164	1247
<b>23' - FDB Feed Delivery Box-Truck</b>	1093	1275	1366

# REPAIR PARTS TABLE OF CONTENTS

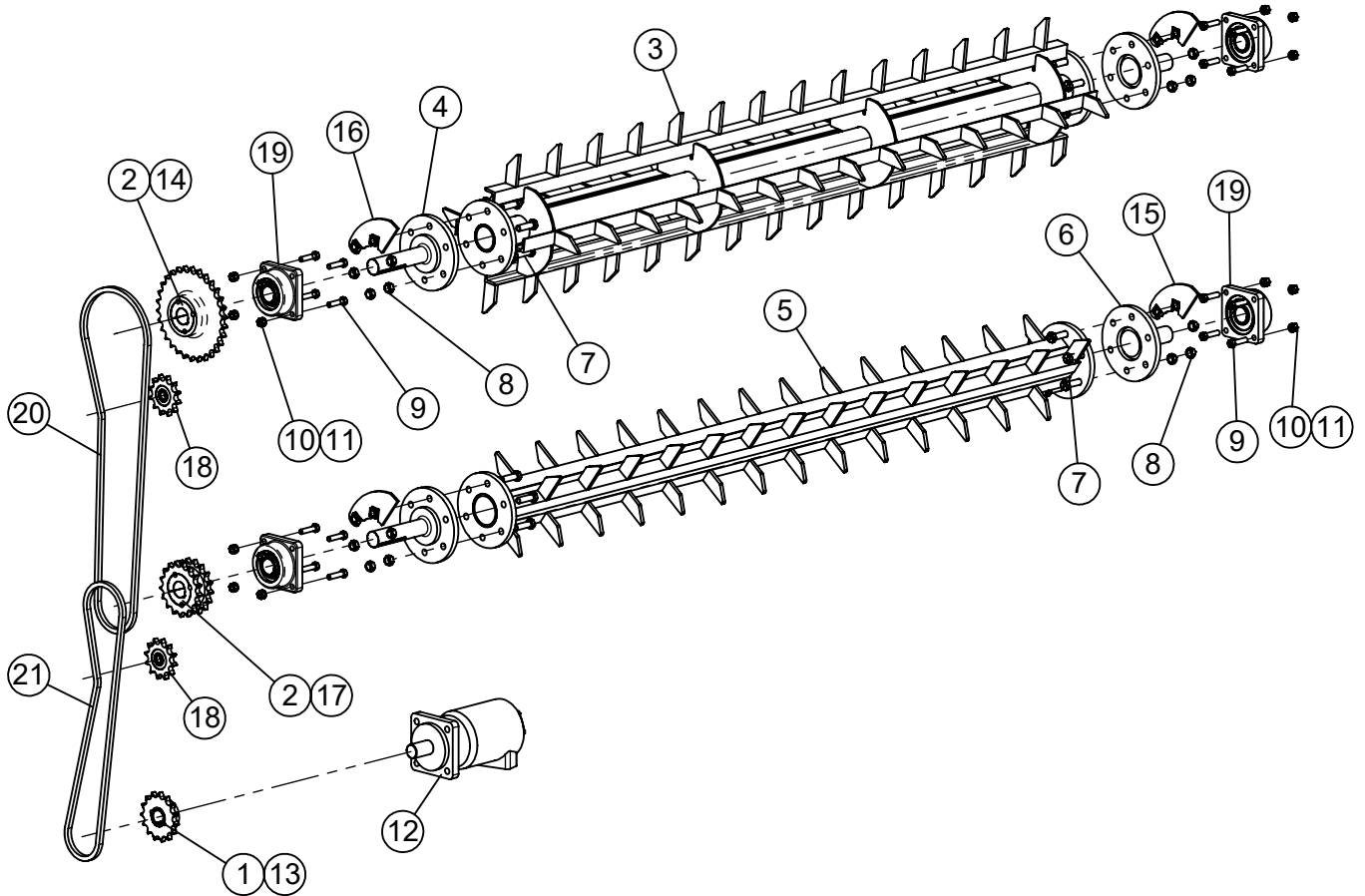
DESCRIPTION	PAGE NO.
FDB 3-AUGER CONVEYOR, 8010.....	22
FDB BEATERS ASSEMBLY, 8010 .....	23
FDB FLOOR CHAIN TAKE UP, 8010 .....	24
FDB DRAPER DRIVE ASSEMBLY, 8010 .....	25
FDB FLOOR CHAIN ASSEMBLY, 8010 .....	26
FDB FLOOR RIDGE KITS .....	27
FDB PUMP MOUNT DRIVE ASSEMBLY .....	28
FDB DISCHARGE DOOR, SPOUT & WIND SHIELDS.....	29
FDB REAR DOOR ASSEMBLY .....	30
FDB HYDRAULIC RESERVIOR .....	31
FDB SCALE ASSEMBLY .....	32
FDB ELECTRONIC SCALE KIT .....	33
FDB & CFB 18', 18" FLARED EXTENSION ASSEMBLY.....	34
POLY FENDERS & MUD FLAPS.....	35
FDB REAR BUMPERS .....	36
FDB SERVICE NOTES & TROUBLE SHOOTING.....	37-41

# FDB DISCHARGE - TRIPLE AUGER #8010U025



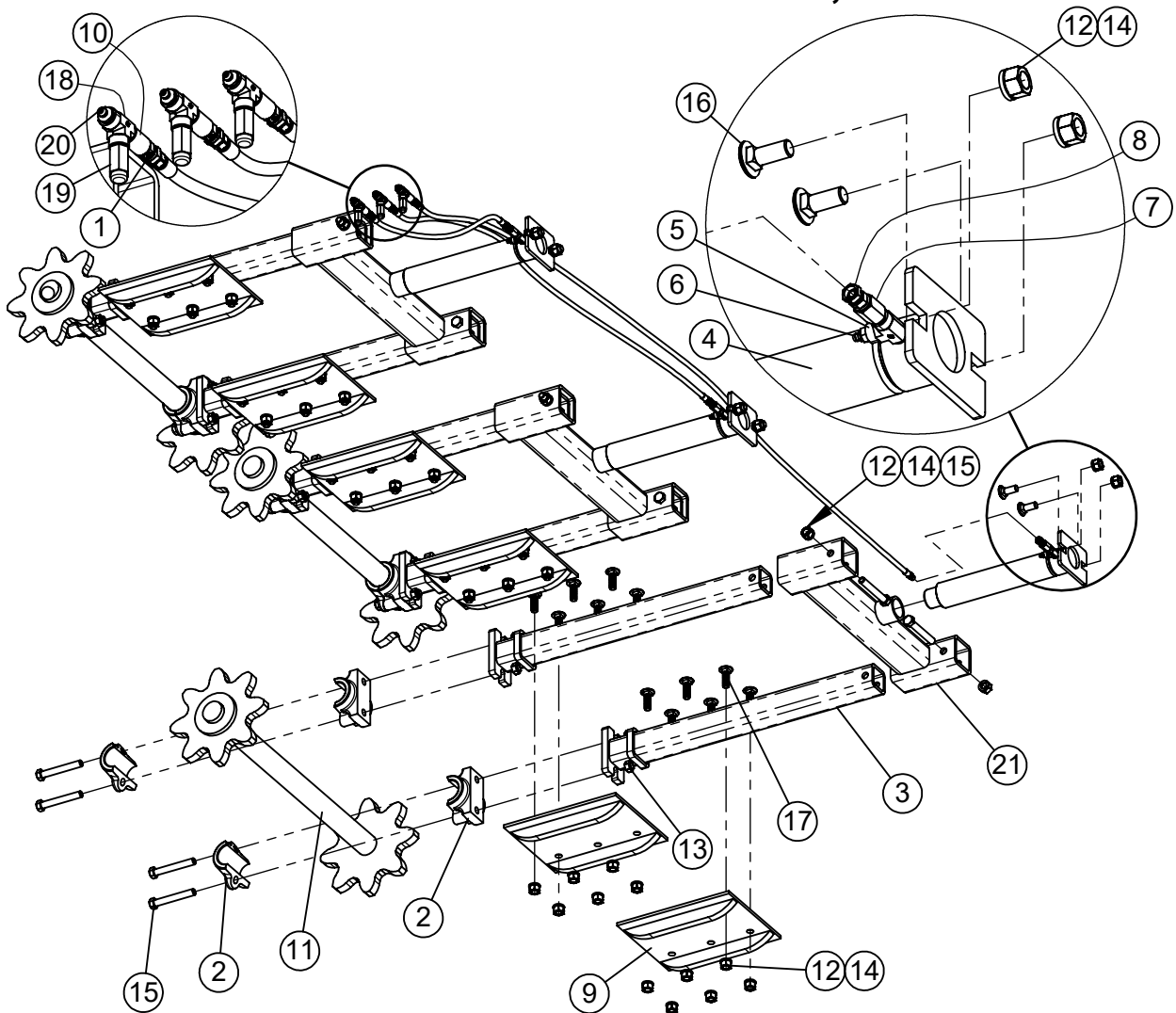
ITEM #	PART #	DESCRIPTION	QTY.
1	8010-W-020	Discharge Body Weldment	1
2	8010-U-041	LH Auger Beef Discharge	3
3	8010-0-025	Auger Drive Shaft	1
4	8010-U-026	FDB Discharge Drive Mount	1
5	QMFL08J108S	1-1/2" QM Flange Bearing	3
6	1610 1 1/4	Taper Bushing (TB)	1
7	104-1027	Hydraulic Motor 15 cu-in	1
8	60BTB16	Single Chain - Bushed Style	1
9	I6015TH	Ball Bearing Idler Sprocket Hardened Teeth	3
10	DS60P17H	Taper Lock Sprocket #60x17	2
11	24P111/2	P1 Bushing	2
12	60BTB17	Single Chain - Bushed Style	1
13	1610 1 1/2	Taper Bushing (TB)	1
14	RC60RIV	#60 Roller Chain 32in	3

# FDB BEATER ASSEMBLY #8010U010



ITEM #	PART #	DESCRIPTION	QTY.
1	1615 1 1/2	Taper Bushing (TB)	1
2	2517 1 11/16	Taper Bushing (TB)	2
3	3010-U-005	CFBX STANDARD BEATER	1
4	3010-U-007	Beater Stub Shaft	2
5	3010-U-037	CFBX Beater - Small	1
6	3010-U-047	Beater Idler Stub Shaft	2
7	405754	HHCS, 5/8"-11 x 2" #5 PLTD	6
8	400911	HEX CROWN LOCNUT, 5/8"-11 #5 PLT	4
9	405705	HHCS 1/2"-13 x 2" #5 PLTD	4
10	400208	HEX NUT 1/2"-13 #5 PLTD	4
11	402008	SPRING LOCK WASHER 1/2" PLTD	4
12	801525C8930	CFBX Beater Motor	1
13	80BTB15H	Single Chain - Bushed Style	1
14	80BTB30	Single Chain - Bushed Style	1
15	823074	CFB STUB SHAFT KNIFE WA	2
16	823075	CFB STUB SHAFT KNIFE WA RH	2
17	DS80ATB17H	Taper Lock Sprocket	1
18	I08012E12	Ball Bearing Idler Sprocket Hardened Teeth	2
19	QMF09J111SM	1 11/16 FLANGE BEARING	4
20	RC80HRIV	#80 HEAVY ROLLER CHAIN	1
21	RC80HRIV	#80 HEAVY ROLLER CHAIN	1

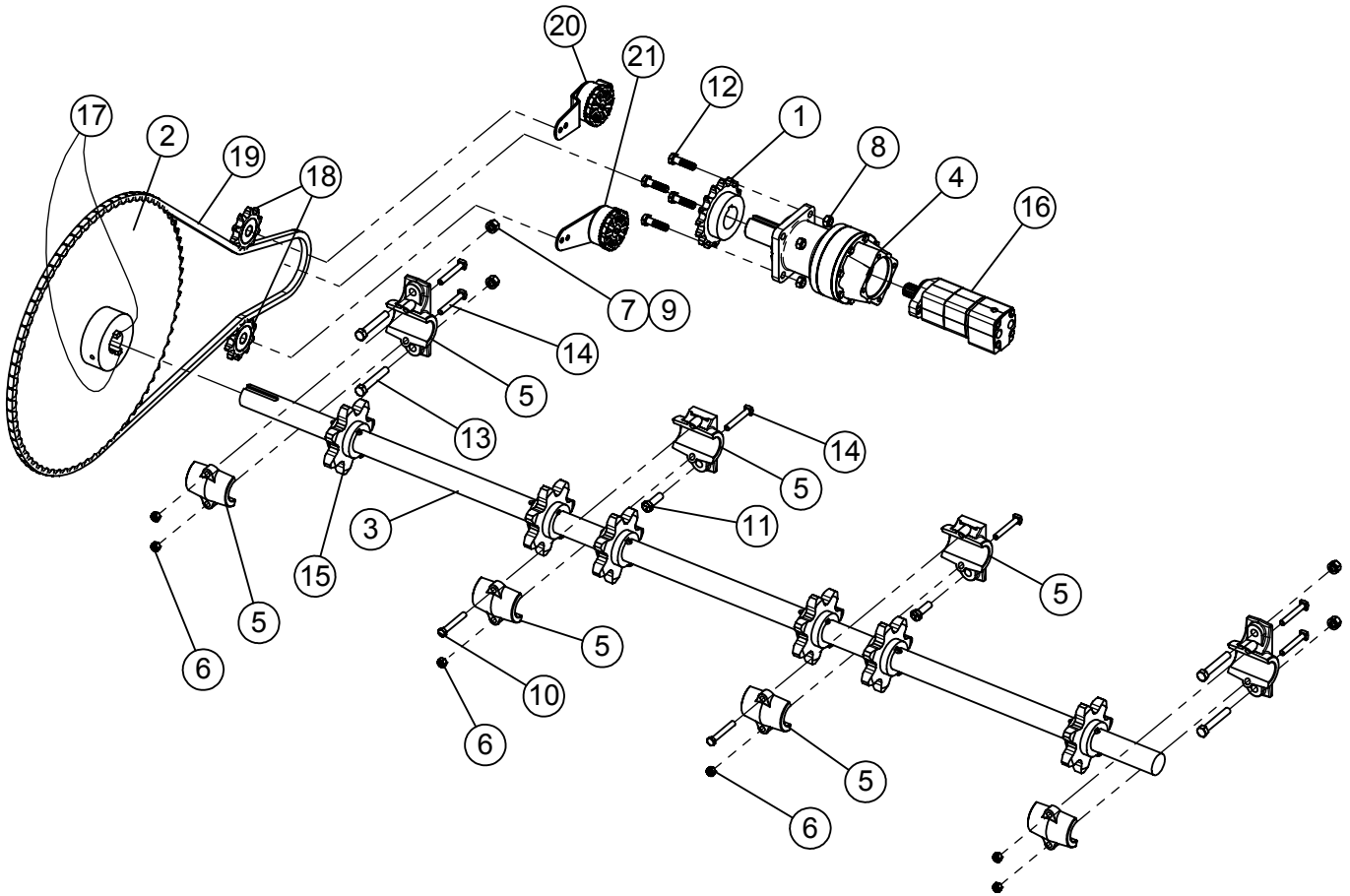
# FDB FLOOR CHAIN TAKE UP, 3010



ITEM #	PART #	DESCRIPTION	QTY.
1	1404-02-02	Straight 1/8"MP x 1/8"FP Swivel	3
2	21227	Babbit Bearing 1-11/16	6
3	2550-U-015	Take Up Arm	6
4	823073	TENSIONER CYLINDER WA	1
5	5602-02-02-02	STREET TEE 1/8-27 5602-02-02-02	1
6	BBS02MP	Brake Bleeder Assembly -02	1
7	563200	Check Valve, Inlet, 02MP-02FP	1
8	1404-02-02	Straight 1/8"MP x 1/8"FP Swivel	1
9	2550-U-025	PLATE, TAKE UP COVER	6
10	260513	1/8 NPT BLK Coupling	3
11	3010-U-036	3ch Take UP - W78B	3
12	400208	HEX NUT 1/2"-13 #5 PLTD	48
13	400913	HEX CROWN LOCKNUT 1/2"-13 #5	12
14	402008	SPRING LOCK WASHER 1/2" PLTD	48
15	405711	HHCS 1/2"-13 x 3-1/2" #5 PLTD	18
16	407101	CHCS 1/2"-13 x 1-1/4" #5 PLTD	6
17	407102	CHCS 1/2"-13 x 1-1/2" #5 PLTD	36
18	5602-02-02-02	STREET TEE 1/8-27 5602-02-02-02	3
19	563169	3000PSI RELIEF INDICATOR	3
20	5NUF5	1/8-27 NPT Grease Fitting	3
21	823053	CFB TAKE UP CROSS BAR WA	3

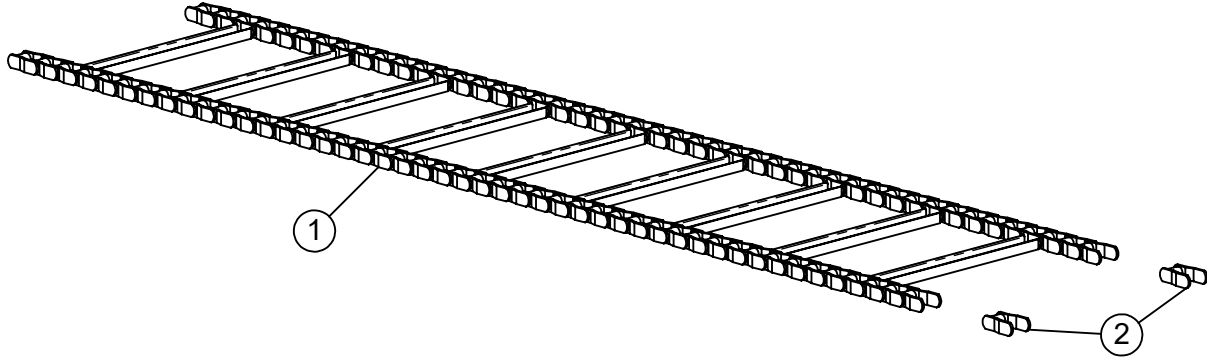


# FDB DRAPER DRIVE ASSEMBLY, 8010D010



ITEM #	PART #	DESCRIPTION	QTY.
1	100B16	Roller Chain Sprocket	1
2	100B70M35	Roller Chain Sprocket	1
3	3010-DS-3C	SHAFT, FLOOR CHAIN DRIVE 3010-184	1
4	16FF1458	Gearbox 5:1 Planetar	1
5	21235	BABBIT BEARING, 2-3/16", (Includes top & bottom halves)	8
6	400208	HEX NUT 1/2"-13 #5 PLTD	6
7	400210	HEX NUT 5/8"-11 #5 PLTD	4
8	400911	HEX CROWN LOCNUT, 5/8"-11 #5 PLT	4
9	402010	SPRING LOCK WASHER 5/8" PLTD	4
10	405711	HHCS 1/2"-13 x 3-1/2" #5 PLTD	2
11	405754	HHCS, 5/8"-11 x 2" #5 PLTD	2
12	405755	HHCS 5/8"-11 x 2-1/4" #5 PLTD	4
13	405762	HHCS 5/8"-11 x 4" #5 PLTD	4
14	409547	SQHCS 1/2"-13 x 3-1/2" GRD 5	6
15	78BC7X35	Draper Sprocket	6
16	350400	FC Motor for 5:1 Heco	1
17	0884	GIB KEY, 1/2" x 3"	2
18	I100	Idler Sprocket #100	2
19	RC100RIV	#100 Roller Chain x 125"	1
20	RT4100	Tensioner	1
21	RT4100-B	Tensioner Flat Arm	1

# FDB FLOOR CHAIN ASSEMBLY



## 2 CHAIN FLOOR ASSEMBLY - 15' FDB

ITEM #	PART #	DESCRIPTION	QTY.
1	823035	FP2 SUPER 88C 2 CHAIN WA	6.56
2	88CPK	D88C CHAIN, PIN & KEY	16

## 3 CHAIN FLOOR ASSEMBLY - 15' FDB

ITEM #	PART #	DESCRIPTION	QTY.
1	823051	CFB FLOOR CHAIN WA 10'	9.6
2	W78BPK	W78 LINK, OFFSET SIDE BAR WELDED	24

## 3 CHAIN FLOOR ASSEMBLY - 17' FDB

ITEM #	PART #	DESCRIPTION	QTY.
1	823051	CFB FLOOR CHAIN WA 10'	10.80
2	W78BPK	W78 LINK, OFFSET SIDE BAR WELDED	24

## 3 CHAIN FLOOR ASSEMBLY - 19' FDB

ITEM #	PART #	DESCRIPTION	QTY.
1	823051	CFB FLOOR CHAIN WA 10'	12
2	W78BPK	W78 LINK, OFFSET SIDE BAR WELDED	24

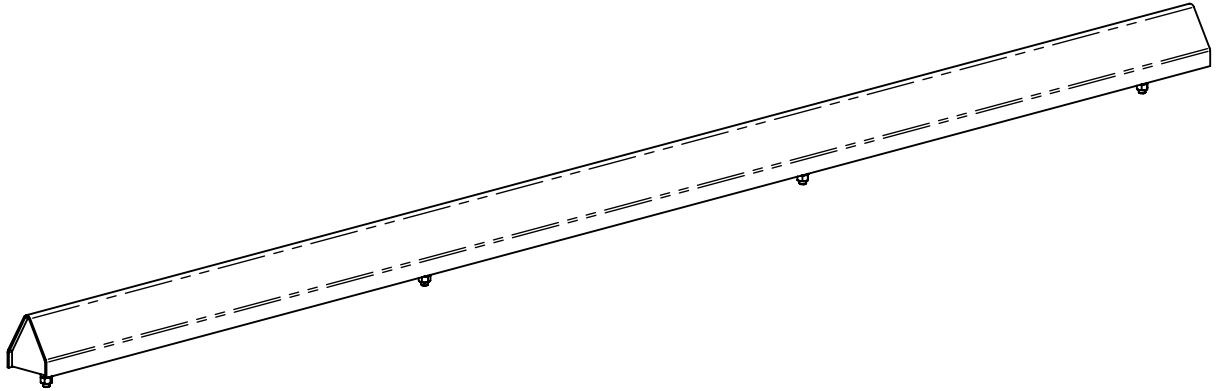
## 3 CHAIN FLOOR ASSEMBLY - 21' FDB

ITEM #	PART #	DESCRIPTION	QTY.
1	823051	CFB FLOOR CHAIN WA 10'	13.2
2	W78BPK	W78 LINK, OFFSET SIDE BAR WELDED	30

## 3 CHAIN FLOOR ASSEMBLY - 23' FDB

ITEM #	PART #	DESCRIPTION	QTY.
1	823051	CFB FLOOR CHAIN WA 10'	14.4
2	W78BPK	W78 LINK, OFFSET SIDE BAR WELDED	30

# FDB FLOOR RIDGE KITS



## FDB FLOOR RIDGE KIT 15FT MS

ITEM #	PART #	DESCRIPTION	QTY.
1	3010U130	CFBx RIDGE 120" MS	AN
2	3010U142	CFBx RIDGE 34" MS	AN

## FDB FLOOR RIDGE KIT 17FT MS

ITEM #	PART #	DESCRIPTION	QTY.
1	3010U136	CFBx RIDGE 70" MS	AN
2	3010U140	CFBx RIDGE 108" MS	AN

## FDB FLOOR RIDGE KIT 19FT MS

ITEM #	PART #	DESCRIPTION	QTY.
1	3010U134	CFBx RIDGE 94" MS	AN
2	3010U140	CFBx RIDGE 108" MS	AN

## FDB FLOOR RIDGE KIT 21FT MS

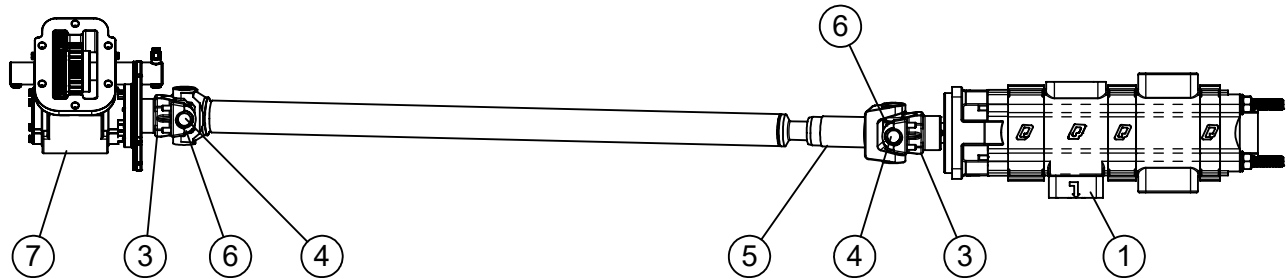
ITEM #	PART #	DESCRIPTION	QTY.
1	3010U132	CFBx RIDGE 118" MSX	AN
2	3010U140	CFBx RIDGE 108" MS	AN

## FDB FLOOR RIDGE KIT 23FT MS

ITEM #	PART #	DESCRIPTION	QTY.
1	3010U134	CFBx RIDGE 94" MS	AN
2	3010U138	CFBx RIDGE 48" MS	AN
3	3010U140	CFBx RIDGE 108" MS	AN

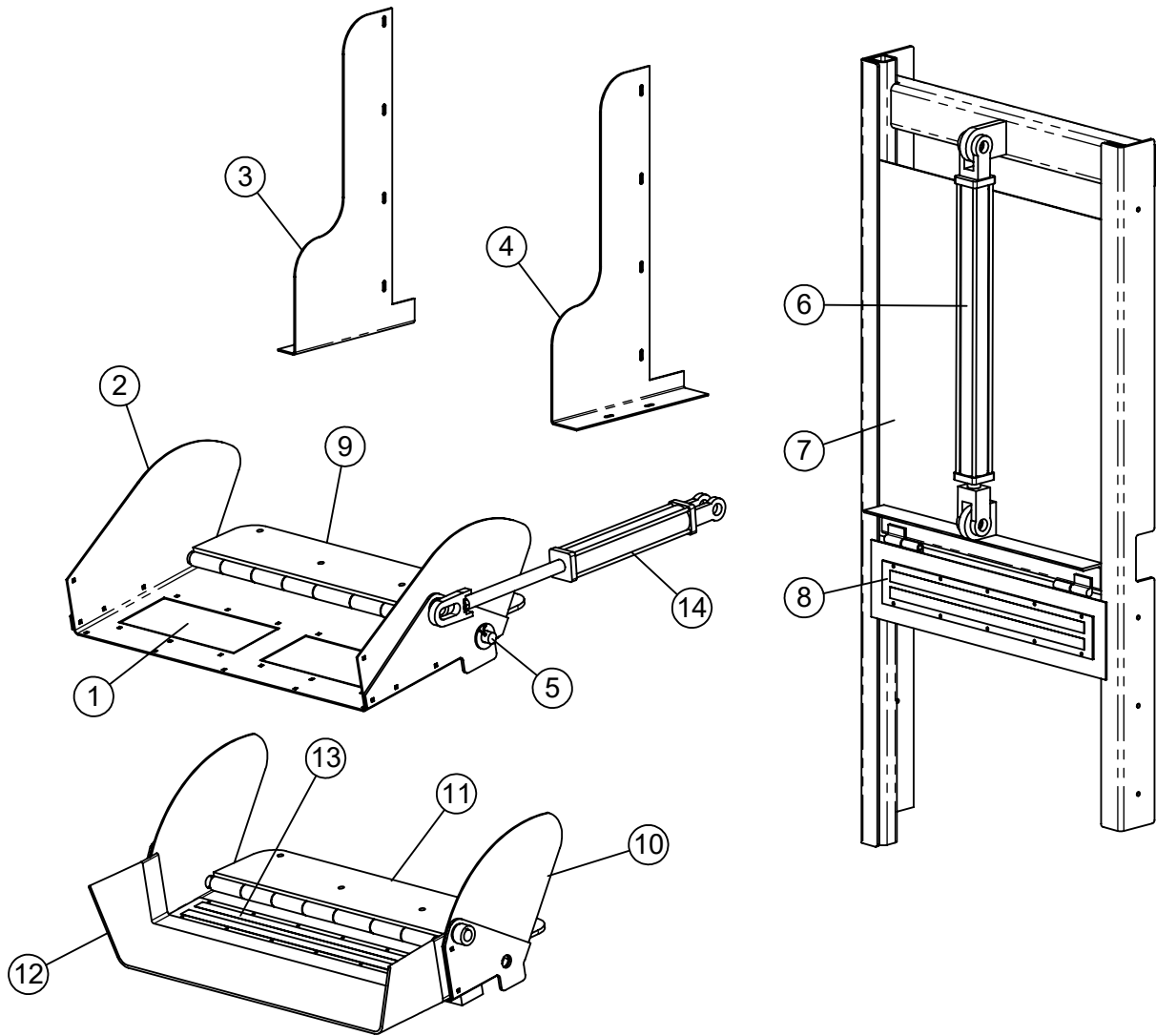
**AN = AS NEEDED**

# FDB PUMP MOUNT DRIVE ASSEMBLY



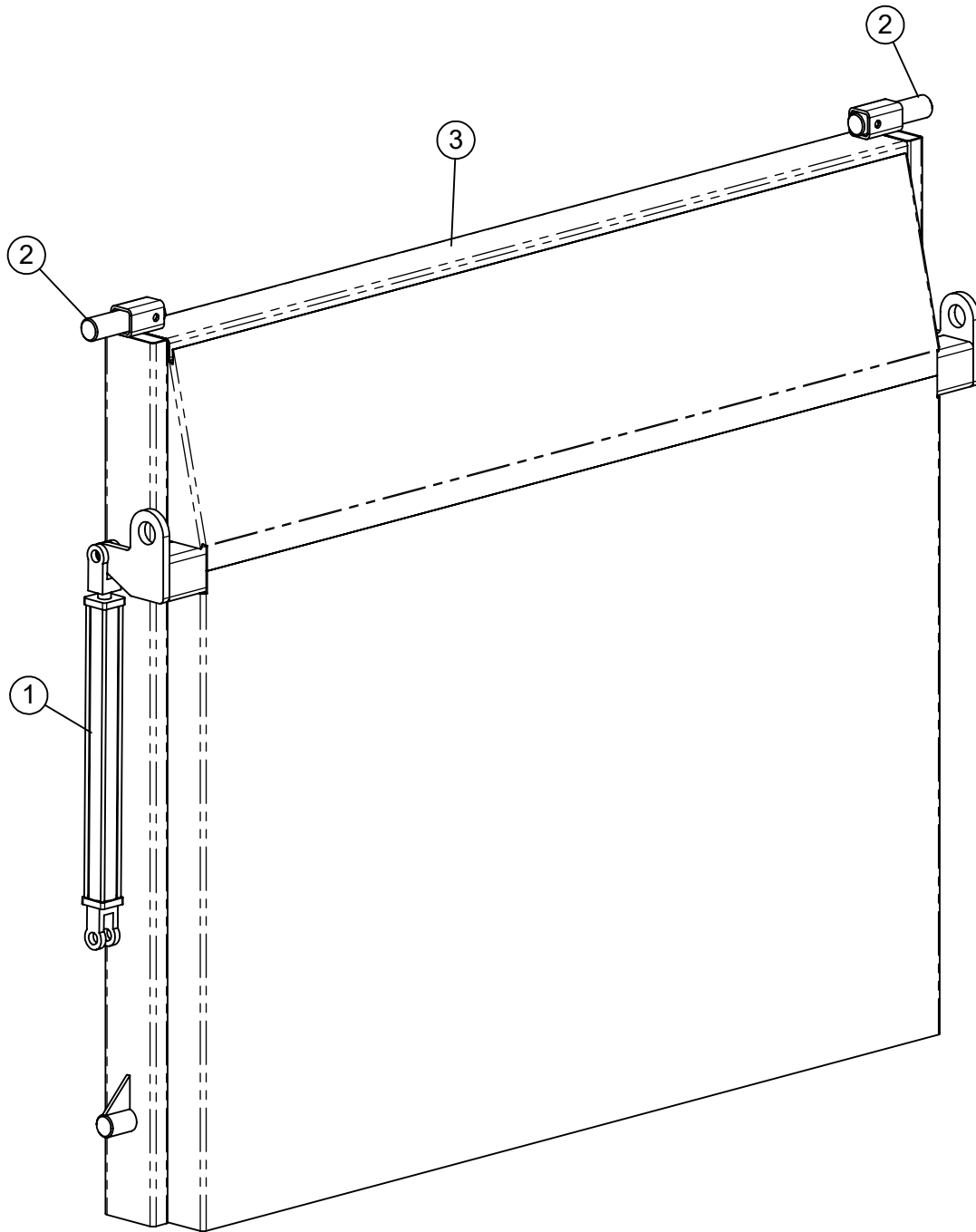
ITEM #	PART #	DESCRIPTION	QTY.
1	ZA331	HYDRAULIC PUMP ZA331	1
2	1310 DL01	1310 Drive Line (Includes Items 3,4,5 & 6)	1
3	N2-4-783	YOKE, 1-1/4" RD Bore 5/16" Key U Bolt Type 1310	2
4	1-0153HD	1310 CROSS KIT, 1-1/16" x 3.24"	2
5	N3-3-128KX	SLIP YOKE 1310 1.375x16 SPLINE, 1.063" BRG DIA	1
6	1-0089	U-BOLT 1.63"DIA 1310	4
7	PTO_4305A	Eaton Fuller 4305A PTO	1

# FDB DISCHARGE DOOR, SPOUTS & WIND SHIELDS



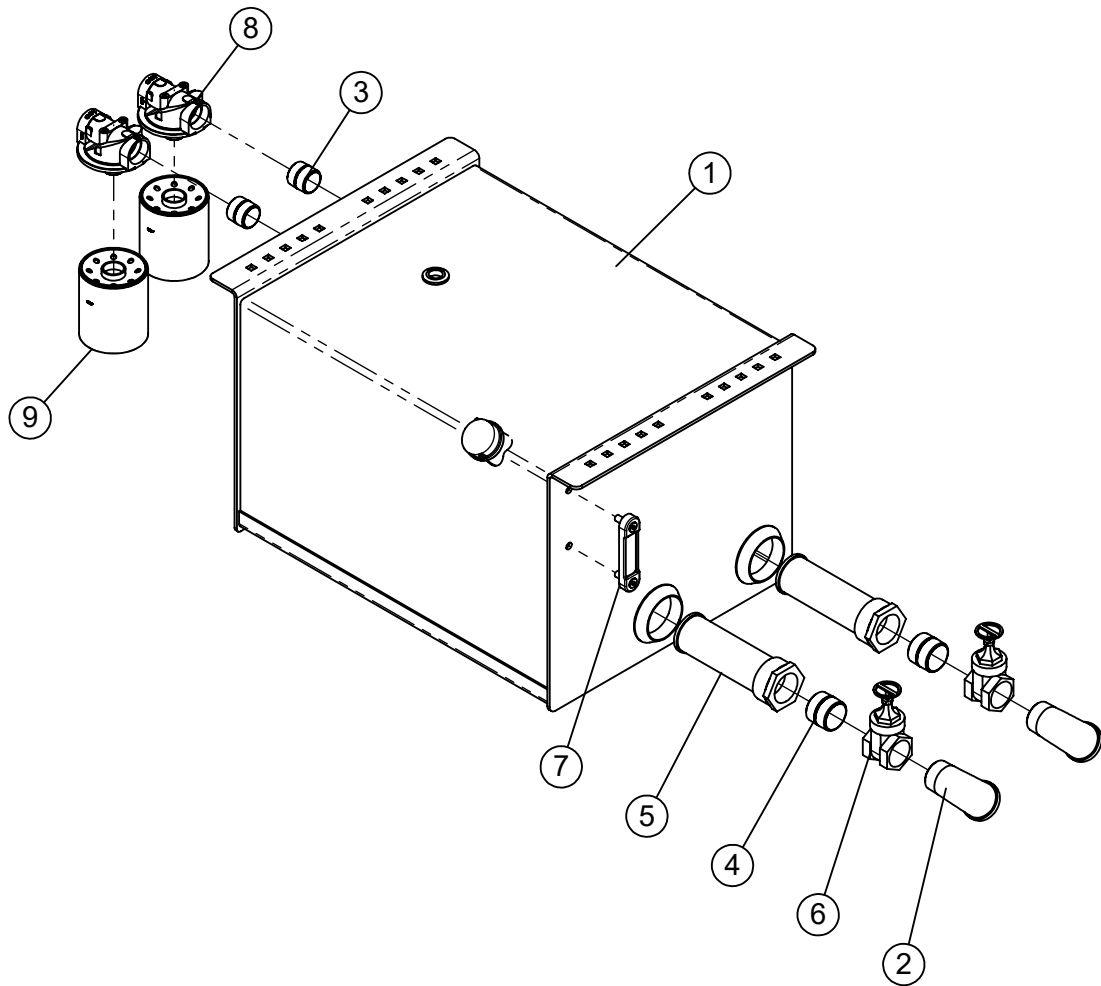
ITEM #	PART #	DESCRIPTION	QTY.
1	375004	ACRO PLATE MAGNET AM 1500	2
2	8010-0-035	DISCHARGE SPOUT, STANDARD	1
3	8010-0-020	FDB Wind Break LH	1
4	8010-0-021	FDB Wind Break RH	1
5	8010-0-043	FDB Spout Hinge Pin	1
6	2X24	CYL 20LH24-112 NPT	1
7	8010-0-030	Discharge Door WA	1
8	SS2600	MAGNET PLATE L/NRRW SSPM 24"	1
9	8010-U-034	Discharge Hinge	1
10	8010-U-036	Discharge Spout Short	1
11	8010-U-034	Discharge Hinge	1
12	8010-0-038	Rubber Spout	1
13	SS3600	MAGNET PLATE L/NRRW SSPM 24"	1
14	8010-U-042	FDB Discharge Spout Cyl	1

# FDB REAR DISCHARGE DOOR



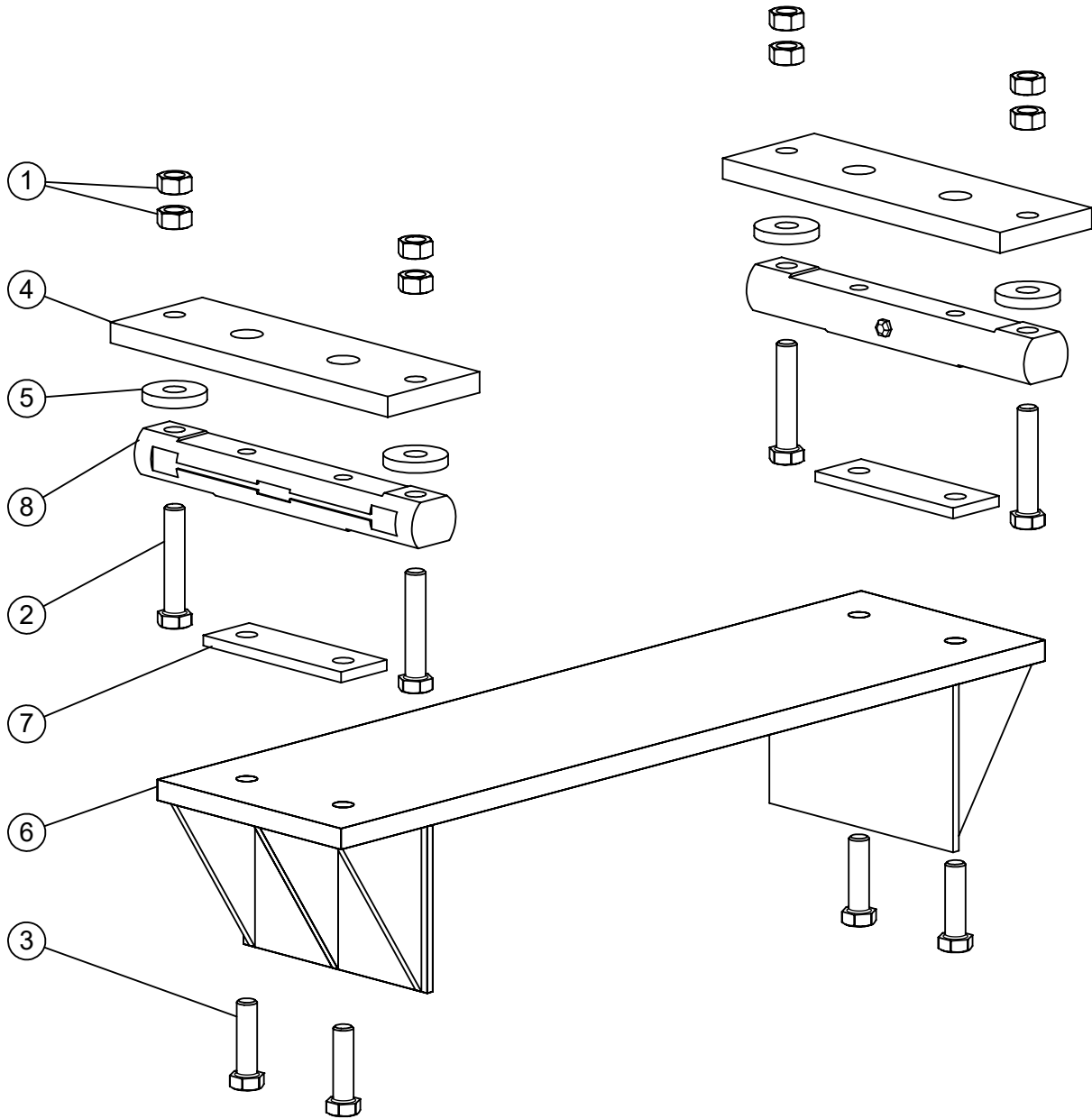
ITEM #	PART #	DESCRIPTION	QTY.
1	2X24	CYL 20LH24-112 NPT	2
2	3010-0-075	RD 2 x 8.5 CR	2
3	8010U020	FDB REAR DISCHARGE DOOR WA	1

# FDB HYDRAULIC RESERVIOR



ITEM #	PART #	DESCRIPTION	QTY.
1	3010-T-001	CFBX Tank - 70gal	1
2	44605K139	2" NPT Street El	2
3	44615K418	1.5" Close Nipple	2
4	44615K419	2" NPT Close Nipple	2
5	790-0103	Suction Filter Screen	2
6	790-0104	2" WOG Valve	2
7	790-0107	5" Sight Gauge	1
8	790-0109	1.5" NPT Spin On Filter Head	2
9	790-0110	10 micron filter element	2

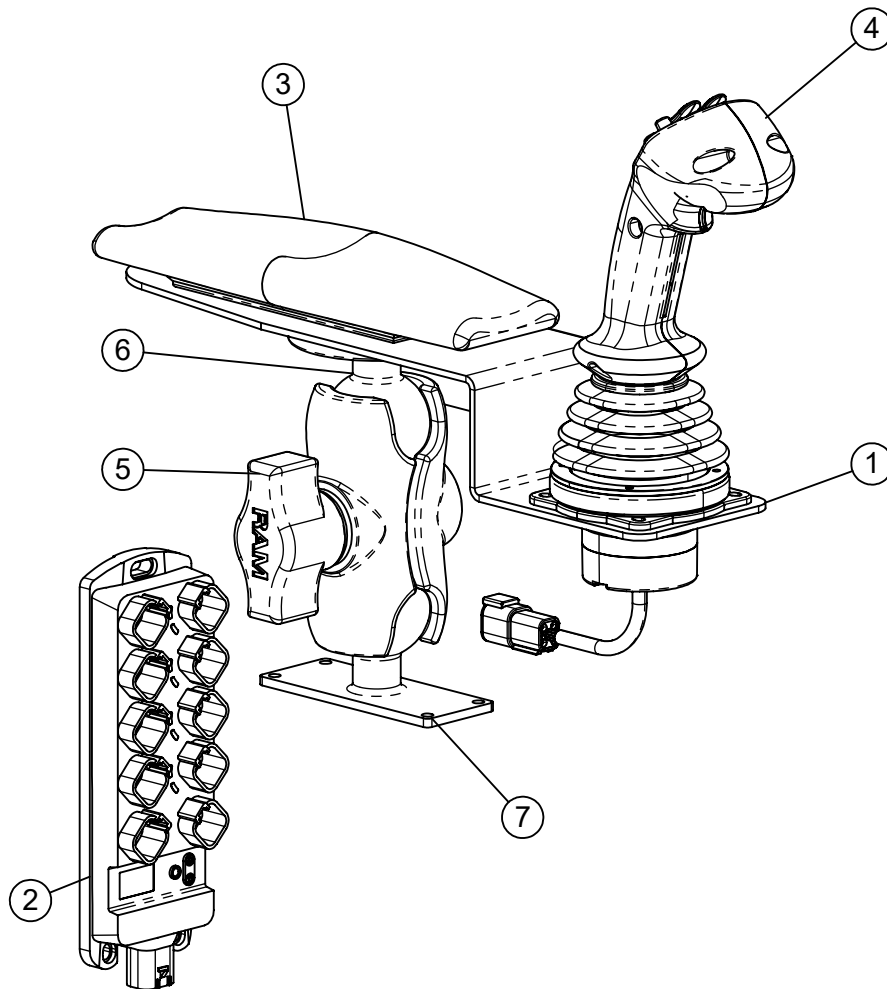
# FDB SCALE ASSEMBLY



ITEM #	PART #	DESCRIPTION	QTY.
1	400035	M24-3 Hex Nut Class 10	8
2	407844	M24-3.0X130MM HEX CAP BOLT 10.9	4
3	407845	M24-3.0X90MM HEX CAP BOLT 10.9	4
4	RM_3010-0-920	DESB Scale Mount 1	2
5	RM_3010-0-921	DESB Scale Washer	4
6	RM_3010-0-930	DESB Scale Mount 2 WA	1
7	RM_3010-0-935	DESB Scale Spacer Shim	2
8	RM_407312	2.875 DESB-21 Weighbar	2

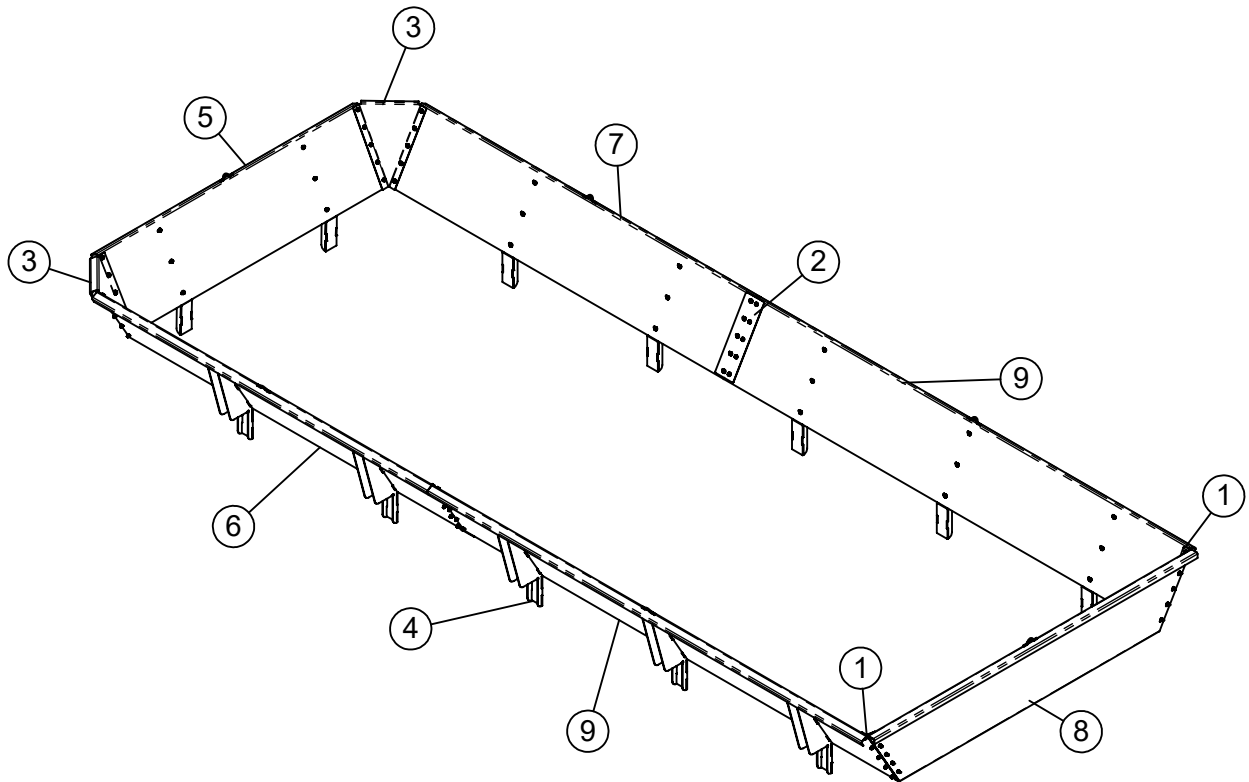


# FDB ELECTRONIC SCALE KIT



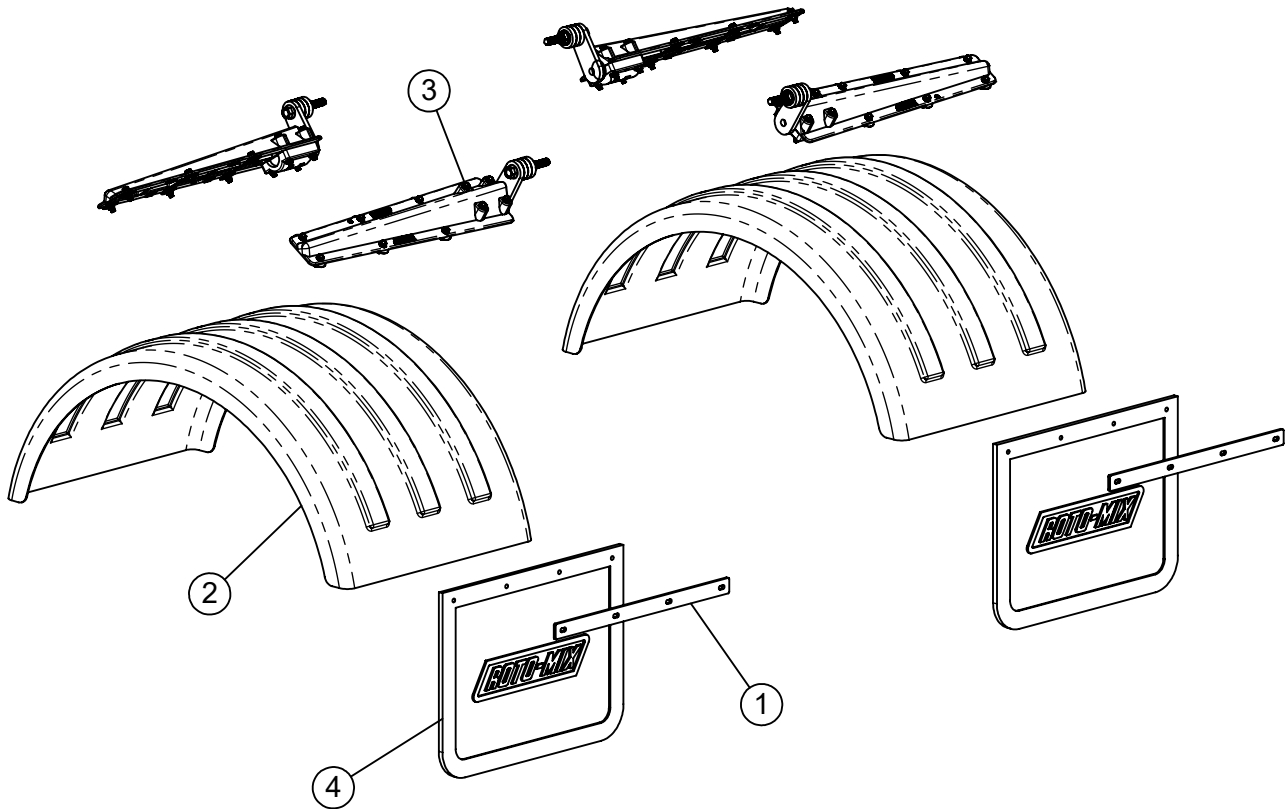
ITEM #	PART #	DESCRIPTION	QTY.
1	8010-0-080	JOYSTICK ARMREST MOUNT	1
2	CR2051	IO Control / Out 16/Dt6	1
3	JOY0003	Arm Rest Pad Threaded	1
4	LE-11395_2	ELECTRONIC JOYSTICK	1
5	RAM-D	RAM-D DOUBLE SOCKET ARM	1
6	RAM-D-202U	RAM-D RND BALL PLATE	1
7	Ram-D-202U-25	RAM-D RECT BALL PLATE	1

# FDB & CFB 18', 18" FLARED EXTENSION ASSEMBLY



ITEM #	PART #	DESCRIPTION	QTY.
1	8010-0-050	SUPPORT, EXT. REAR CORNER	2
2	8010-0-051	PLATE, EXTENSION TRANSITION	2
3	8010-0-054	SHEET, EXT. FLARED CORNER	2
4	823015	FLARED EXTENSION STAKE WA	12
5	823048	EXTENSION FRONT WA	1
6	823049	18" EXTENSION WA 18' BOX	1
7	823054	18" EXTENSION WA 18' BOX RH	1
8	823055	18" REAR EXTENSION WA	1
9	823056	18" EXTENSION 144" LONG WA	2
10	506X16	3/8"-16 x 1" HEX BOLT GR 5	96
11	FW06	3/8 FLAT WASHER	96
12	L06	3/8" Lock Washer	96
13	NC06	3/8-16 HEX NUT	96

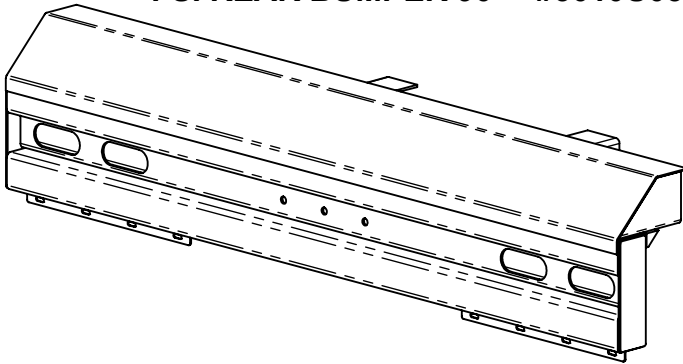
# POLY FENDERS & MUD FLAPS



ITEM #	PART #	DESCRIPTION	QTY.
1	183087	MUD FLAP STRAP	2
2	354391	POLY FENDER	2
3	354393	POLY FENDER TAPER BRACKET KIT (4 Brkt's per Kit)	4
4	370202	ROTO-MIX MUD FLAP 24" x 18-1/2"	2

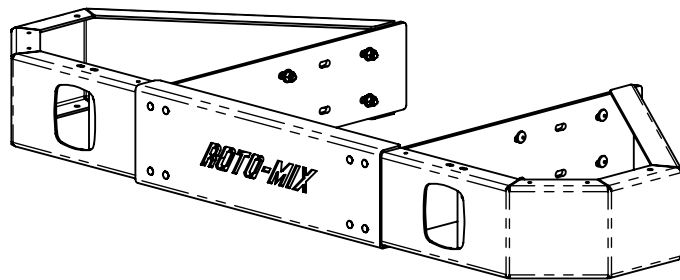
# FDB REAR BUMPERS

FSI REAR BUMPER 90" - #3010U052



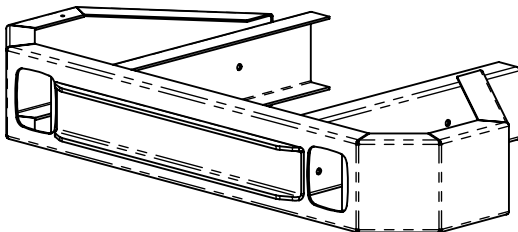
---

WIDE REAR BUMPER 10" x 88", RECT. LIGHTS - #780948



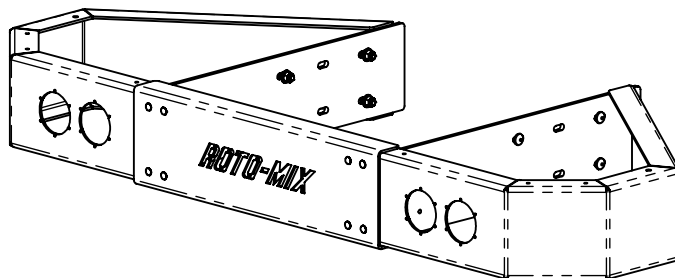
---

NARROW REAR BUMPER 10" x 64", RECT LIGHTS - #780907



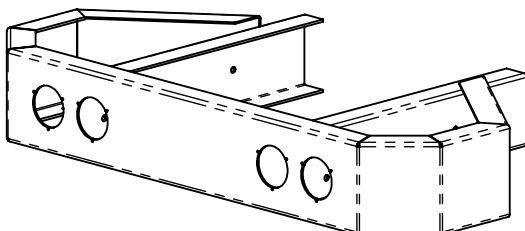
---

WIDE REAR BUMPER 10" x 88" RND LIGHTS - #780949



---

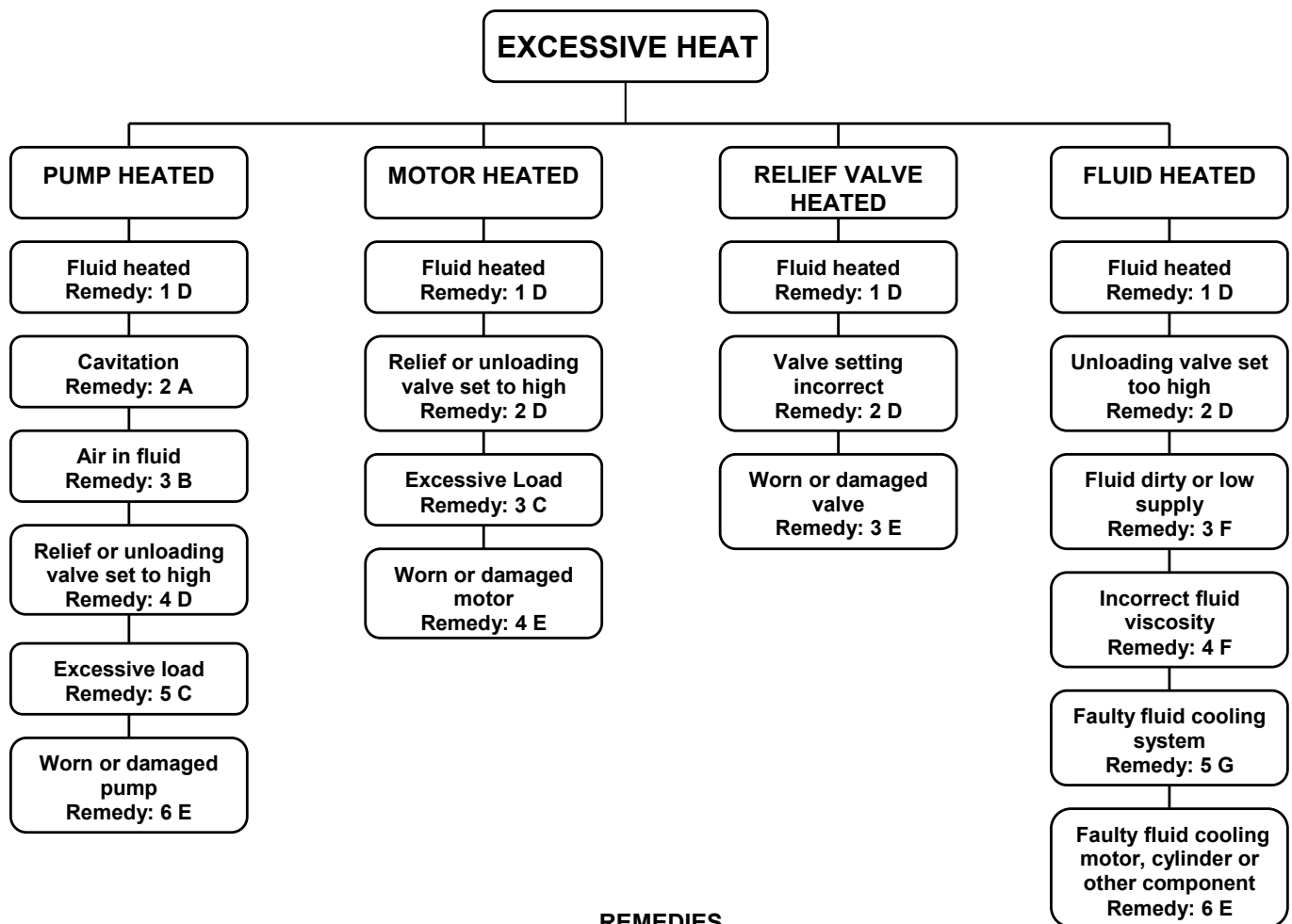
NARROW REAR BUMPER 10" x 64", RND LIGHTS - #780969



# FDB-15,17,19,21,23

## TRUCK FEED DELIVERY BOX

### Service Notes



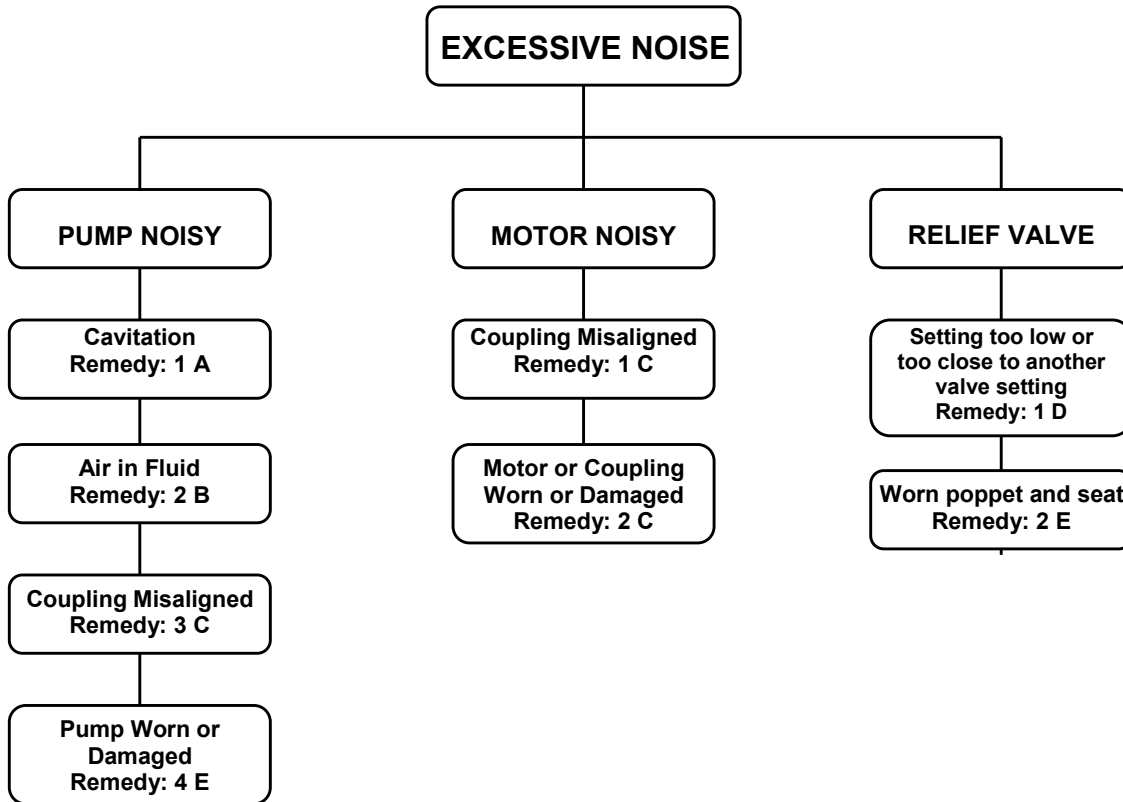
#### REMEDIES

- |  |  |
|--|--|
| <p>A. Any or all of the following:</p> <ul style="list-style-type: none"> <li>• Replace dirty filters.</li> <li>• Clean inlet line.</li> <li>• Clean reservoir breather vent.</li> <li>• Change system fluid.</li> <li>• Change to proper pump drive motor speed.</li> <li>• Overhaul or replace supercharge pump.</li> </ul> <p>B. Any or any all of the following:</p> <ul style="list-style-type: none"> <li>• Tighten leaky inlet connections</li> <li>• Fill reservoir to proper level.<br/>With few exceptions, all return lines should be below fluid level in the reservoir.<br/>Bleed air from system.</li> <li>• Replace pump shaft seal<br/>Also replace shaft if worn at seal journal.</li> </ul> <p>C. All of the following:</p> <ul style="list-style-type: none"> <li>• Align unit</li> <li>• Check condition of seals, bearings, and coupling</li> <li>• Locate and correct mechanical binding.</li> <li>• Check for workload in excess of circuit design</li> </ul> | <p>D. • Install and adjust pressure gauge.<br/>Keep at least 125 PSI (8.617 bar) (861.7 kPa) difference between valve settings.</p> <p>E. • Overhaul or replace defective part(s).</p> <p>F. • Change filters.<br/>• Check system fluid viscosity. Change if necessary.<br/>• Fill reservoir to proper level</p> <p>G. • Clean color and/or strainer<br/>• Replace cooler control valve<br/>• Replace or repair cooler</p> |
|--|--|

# FDB-15,17,19,21,23

## TRUCK FEED DELIVERY BOX

### Service Notes



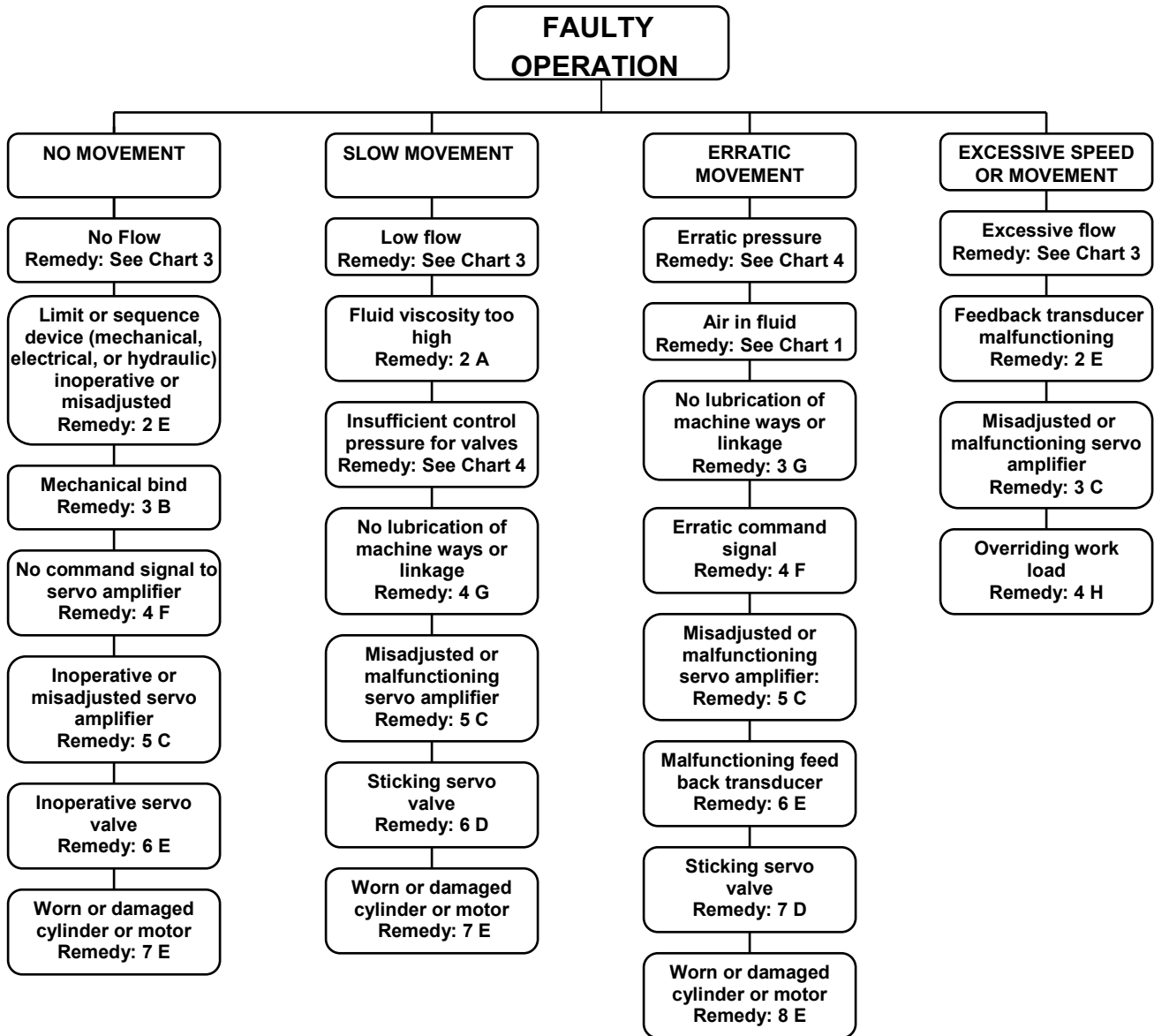
#### REMEDIES

- A. Any or all of the following:
- Replace dirty filters.
  - Wash strainers in solvent compatible with system fluid.
  - Clean inlet line.
  - Clean reservoir breather vent.
  - Change system fluid.
  - Change to proper pump drive motor speed.
  - Overhaul or replace supercharge pump.
  - Check fluid temperature.
- B. Any or any all of the following:
- Tighten leaky inlet connections
  - Fill reservoir to proper level.
  - With few exceptions, all return lines should be below fluid level in the reservoir.
  - Bleed air from system.
  - Replace pump shaft seal
- Also replace shaft if worn at seal journal.
- C. All of the following:
- Align unit
  - Check condition of seals, bearings, and coupling
- D. Install and adjust pressure gauge.
- E. Over or replace defective part(s).

# FDB-15,17,19,21,23

## TRUCK FEED DELIVERY BOX

### Service Notes



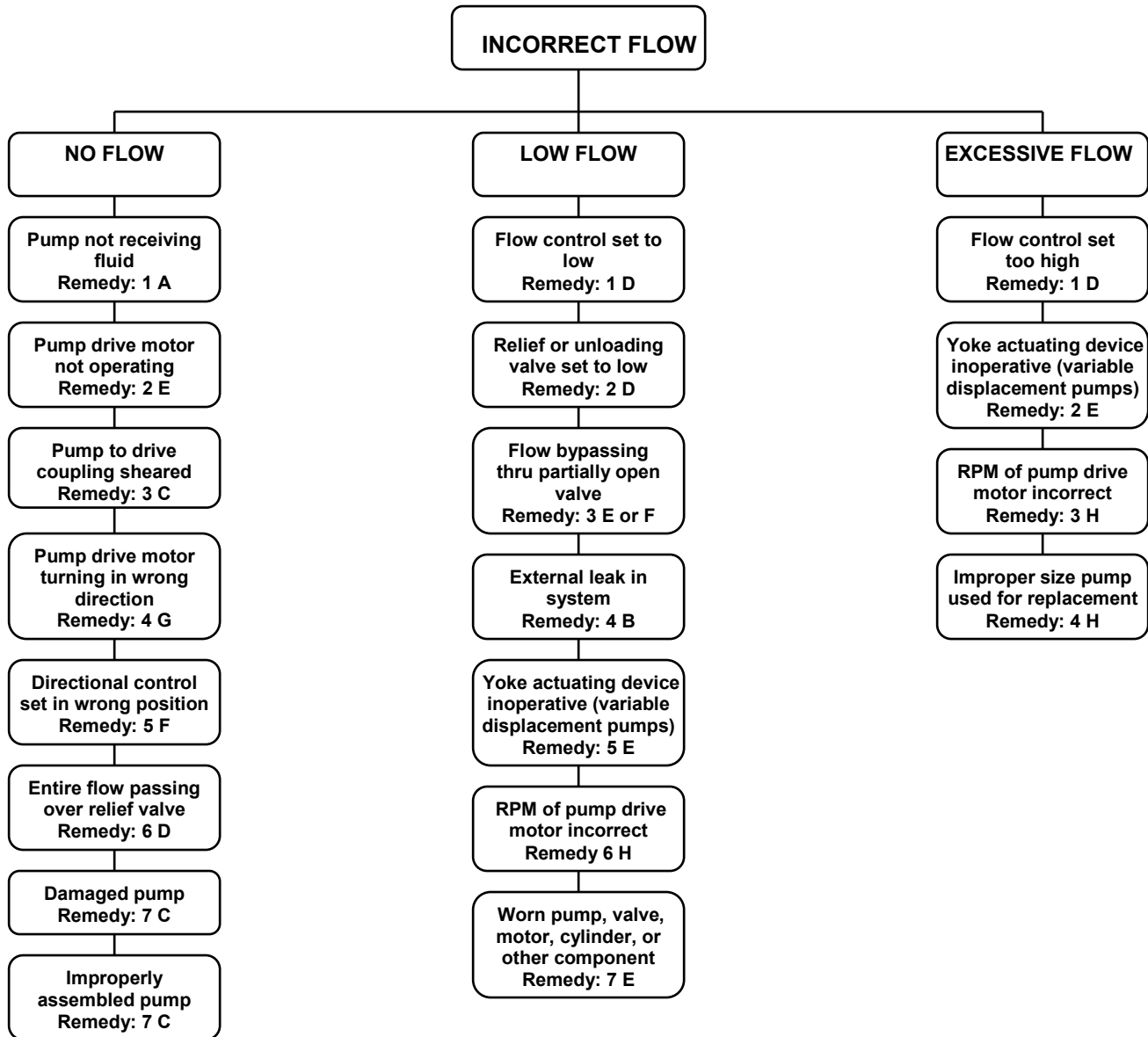
#### REMEDIES

- A. • Check fluid temperature.  
• Check system fluid viscosity. Change of necessary.
- B. • Locate bind and repair.
- C. • Adjust, repair, pr replace part.
- D. • Clean adjust or replace part.  
• Check condition of system fluid and filters.
- E. • Overhaul or replace part.
- F. • Repair command console or interconnecting wires.
- G. • Lubricate.
- H. • Adjust, repair, or replace counterbalance valve.

# FDB-15,17,19,21,23

## TRUCK FEED DELIVERY BOX

### Service Notes

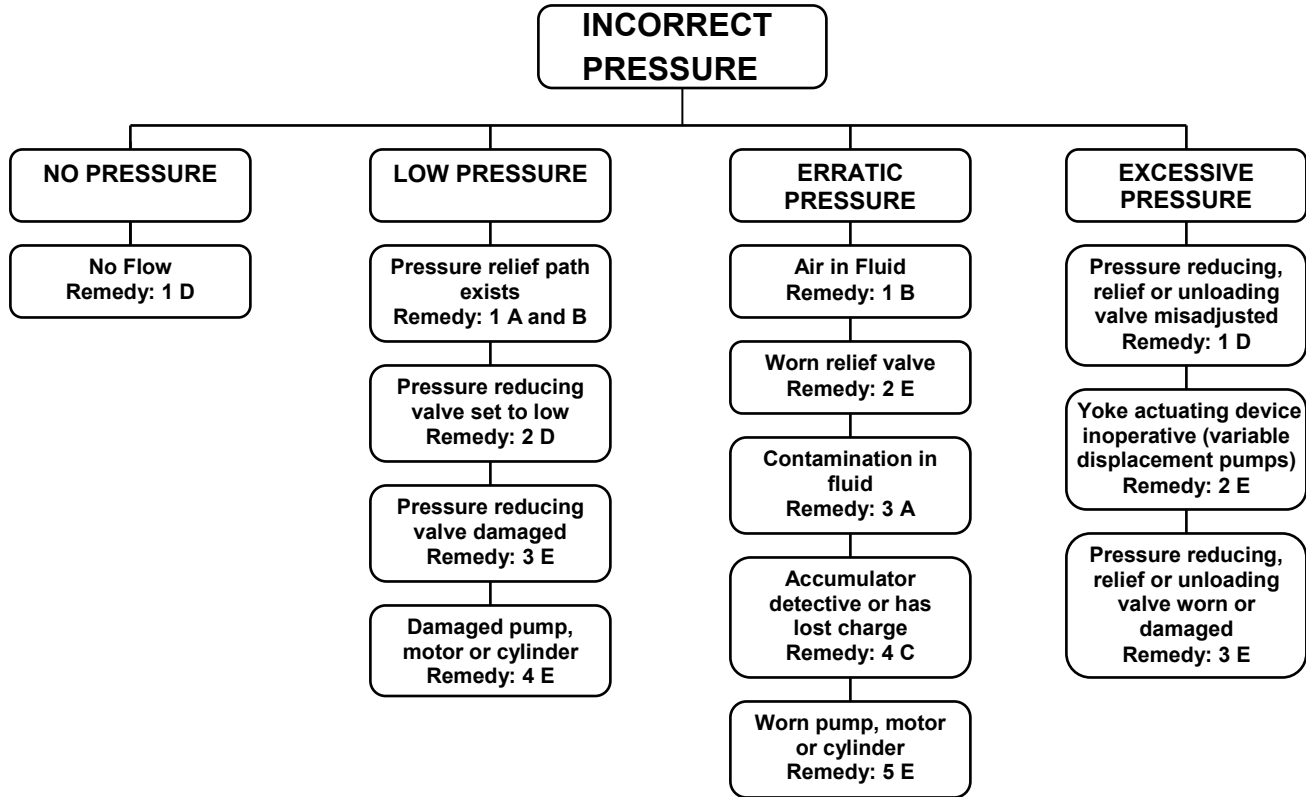


#### REMEDIES

- |   |   |
|---|---|
| <p>A. Any or all of the following:</p> <ul style="list-style-type: none"> <li>• Replace dirty filters.</li> <li>• Clean clogged inlet line.</li> <li>• Clean reservoir breather vent.</li> <li>• Fill reservoir to proper level.</li> <li>• Overhaul or replace supercharge pump.</li> </ul> <p>B. • Tighten leaky inlet connections<br/>• Bleed air from system.</p> <p>C. • Check for damaged pump or pump drive.<br/>• Replace and align coupling</p> <p>D. • Check for workload in excess of circuit design</p> | <p>E. • Overhaul or replace part.</p> <p>F. Any or the following:</p> <ul style="list-style-type: none"> <li>• Check position of manually operated controls.</li> <li>• Check electrical circuit on solenoid operated controls.</li> <li>• Repair or replace pilot pressure pump</li> </ul> <p>G. • Reverse rotation</p> <p>H. • Replace with correct unit.</p> |
|---|---|



# FDB-15,17,19,21,23 TRUCK FEED DELIVERY BOX Service Notes



## REMEDIES

- A. • Replace dirty filters and system fluid
- B. • Tighten leaky inlet connections  
Fill reservoir to proper level and bleed air from system.
- C. • Check gas valve for leakage.
  - Charge to correct pressure.
  - Overhaul if defective.
- D. • Adjust apart.
- E. • Overhaul or replace part