



FEEDER

800-14 1000-16 1200-20

OPERATION AND PARTS MANUAL

**ROTO-MIX LLC
P.O. BOX 1724
2205 E. Wyatt Earp Blvd.
Dodge City, Kansas 67801
(620) 225-1142**

©ROTO-MIX 2006

Serial No. _____

TABLE OF CONTENTS

Warranty.....	3-4
Scales Warranty & Service Policy	4
Operator Qualifications	5
Safety	6-16
Lubrication Chart	17
800-14 Specifications.....	18
1000-16 Specifications.....	19
1200-20 Specifications.....	20
800-14 Truck Dimensions	21
1000-16 Truck Dimensions	22
1200-20 Truck Dimensions	23
Extension Specifications.....	24
Parts Pages Table of Contents	25



Limited Warranty Statement

ROTO-MIX LLC warrants to the original purchaser all products manufactured by it to be free from defects in material and workmanship under normal use and service.

ROTO-MIX's obligation under this warranty is limited to repairing or replacing, as the company may elect, free of charge and without charge for installation, at the place of business of a dealer or distributor authorized to handle the equipment covered by this warranty or at a ROTO-MIX facility, any parts that prove, in the company's judgment, to be defective in material or workmanship within one (1) year after delivery to the original purchaser, and still owned by the original purchaser. This warranty shall in no way make ROTO-MIX liable to anyone for personal injuries or damages, loss of time, or expense of any kind either direct or indirect resulting from part failure or defect. This warranty is subject to acts of God, fire and existing conditions of supply and demand, or production, or ability or inability to deliver, or for any other valid reason beyond the reasonable control of ROTO-MIX, to obtain materials, manufactured replacement parts, or make delivery thereof. No distributor, dealer, agent, or ROTO-MIX employee (other than the CEO or President in writing) is authorized to extend any other or further express or implied warranty or incur any additional obligation on ROTO-MIX's behalf in connection with the sale of this product.

If ROTO-MIX, or its duly authorized representative, shall find that such returned part or parts are defective and such defects, or defect, are included in and covered by said warranty, then such defective part or parts shall promptly be replaced without charge to the purchaser, F.O.B. the ROTO-MIX plant.

Product Registration - It is a condition of this warranty that the original purchaser must fill out the warranty card furnished by ROTO-MIX and that it be returned to ROTO-MIX within 10 days of purchase and be recorded in ROTO-MIX's owner file for this warranty to be valid. In the event an owner's card is not on file at the ROTO-MIX office, the warranty period will extend only from date equipment was picked up or shipped from the ROTO-MIX plant.

Maintenance - It is the customer's responsibility to maintain their equipment in accordance with the instructions provided in the Operator's Manual. ROTO-MIX recommends that you keep records and receipts; you may be asked to prove that maintenance instructions have been followed.

Operation - It is the customer's responsibility to operate the equipment only for the purpose for which it was designed and in accordance with all safety and operational recommendations contained in the Operators Manual. If a defect in materials or workmanship occurs, it is the customer's responsibility to cease operating the equipment until authorized repairs are made. **Damage, which occurs from continued operation, may not be covered by this warranty.**

What this Warranty Covers

This warranty covers failures caused by defects in materials or workmanship only.

This Warranty does not cover failures caused by:

- Improper operation
- Natural calamities
- Unauthorized modifications
- Unauthorized repairs
- Use of Non ROTO-MIX parts
- Neglected maintenance
- The use of PTO Shaft Adaptors
- Usage contrary to the intended purpose of the product

Warranty continues on the next page.

Limited Warranty Statement continued

This Warranty does not cover replacement of Wear or Maintenance Items including, but not limited to.

- | | | | |
|--------------|----------|-------------|----------|
| - Lubricants | - Tires | - Chains | - Blades |
| - Filters | - Augers | - Idlers | - Belts |
| - Hoses | - Wipers | - Batteries | |

This Warranty does not cover:

- Pickup and delivery of the equipment
- Service Calls or Travel Time to and from sites
- Rental of replacement equipment during repair period
- Products that have been declared a total loss and subsequently salvaged
- Overtime labor charges
- ROTO-MIX is not responsible and will not be liable for damage caused to persons or property, commercial loss, loss of time or production, loss of use by reason of the installation or use of ROTO-MIX products or their mechanical failure.

Right to Make Changes

ROTO-MIX reserves the right to make any changes to a ROTO-MIX product at any time without incurring any obligation with respect to any product previously ordered, sold or shipped, with or without notice.

Parts Warranty

ROTO-MIX warrants replacement parts against defects in materials or workmanship for a period of 90 days or the remainder of the product warranty, whichever is longer. Remedy for defective replacement parts for units that are beyond the original product warranty, will be limited to replacement of the failed part. Failures that are due to damage, improper installation, lack of maintenance or improper operation will not be covered.

ROTO-MIX 2205 East Wyatt Earp Blvd., Dodge City, KS 67801 (620) 225-1142 Fax: (620) 225-6370

SCALES WARRANTY & SERVICE POLICY

DIGI-STAR SCALE SYSTEMS

Digi-Star, LLC warrants for a period of one year from date of installation, to correct by repair or replacement, at Digi-Star's option, any defect in material or workmanship in any part of this product. In the event of replacement, Digi-Star's sole obligation shall be to provide replacement products or parts. F.O.B. Digi-Star, LLC, W5527 Hwy 106, Fort Atkinson, WI 53538 USA.

WEIGH-TRONIX SCALE SYSTEMS

WEIGH-TRONIX warrants for a period of one year from date of installation, to correct by repair or replacement, at Weigh-Tronix's option, any defect in material or workmanship in any part of this product. In the event of replacement, Weigh-Tronix's sole obligation shall be to provide replacement products or parts. F.O.B. Avery Weigh-Tronix, 1000 Armstrong Drive, Fairmont, MN 56031-1439 USA.

OPERATOR QUALIFICATIONS

Operation of this feeder delivery box shall be limited to competent and experienced persons. In addition, anyone who will operate or work around a feeder delivery box must use good common sense. In order to be qualified, he or she must also know and meet all other qualifications, such as:

1. Some regulations specify that no one under the age of sixteen (16) may operate power machinery. It is your responsibility to know what these regulations are in your area and/or situation.
2. Current OSHA regulations state in part: At the time of initial assignment and at least annually thereafter, the employer shall instruct **EVERY** employee in the safe operation and servicing of all equipment with which the employee is, or will be involved.
3. Unqualified persons are to **STAY OUT OF THE WORK AREA.**
4. A person who has not read and understood all operating and safety instructions is not qualified to operate the machinery.

FAILURE TO READ THIS FEEDER DELIVERY BOX MANUAL AND ITS SAFETY INSTRUCTIONS IS A MISUSE OF THE EQUIPMENT.



SAFETY

TAKE NOTE! THIS SAFETY ALERT SYMBOL FOUND THROUGHOUT THIS MANUAL IS USED TO CALL YOUR ATTENTION TO INSTRUCTIONS INVOLVING YOUR PERSONAL SAFETY AND THE SAFETY OF OTHERS. FAILURE TO FOLLOW THESE INSTRUCTIONS CAN RESULT IN INJURY OR DEATH.



THIS SYMBOL MEANS

-ATTENTION!

-BECOME ALERT!

-YOUR SAFETY IS INVOLVED!

SIGNAL WORDS: Note the use of the signal words **DANGER**, **WARNING**, and **CAUTION** with the safety messages. The appropriate signal word for each has been selected using the following guidelines:

DANGER: Indicates an imminently hazardous situation that, if not avoided, will result in serious injury or death. This signal word is to be limited to the most extreme situations typically for machine components which, for functional purposes, cannot be guarded.

WARNING: Indicates a potentially hazardous situation that, if not avoided, will result in serious injury or death, and includes hazards that are exposed when guards are removed. It may also be used to alert against unsafe practices.

CAUTION: Indicates a potentially hazardous situation that, if not avoided, may result in minor or moderate injury. It may also be used to alert against unsafe practices.

If you have questions not answered in this manual or require additional copies or the manual is damaged, please contact your dealer or ROTO-MIX, 2205 E. Wyatt Earp, Dodge City, Kansas, 67801. (Telephone) 620-225-1142 (Fax) 620-225-6370

SAFETY FIRST

REMEMBER: The careful operator is the best operator. Most accidents are caused by human error. Certain precautions must be observed to prevent the possibility of injury or death.



DO NOT ALLOW PERSONNEL OTHER THAN THE QUALIFIED OPERATOR NEAR THE MACHINE.



NEVER START MACHINE UNTIL ALL GUARDS AND SAFETY SHIELDS ARE IN PLACE.



DO NOT CLEAN, ADJUST OR LUBRICATE THE MACHINE WHILE IT IS IN MOTION.



LOOSE OR FLOPPY CLOTHING SHOULD NOT BE WORN BY THE OPERATOR.

OPERATING PRECAUTIONS & INSTRUCTIONS:

- A. Check to see that no obstructions are present in the feeder delivery box prior to start up.
- B. Before loading, run the feeder delivery box empty and check all operations.
- C. Do not overload the feeder delivery box, as the mixing efficiency may be reduced and unit damage may occur. (See loading instructions).
- D. Remove all moisture drain plugs if the feeder delivery box is going to set in the rain or snow.
- E. Be sure all shields are in place before operation.
- F. Use common sense when operating.



EQUIPMENT SAFETY GUIDELINES

Safety of the operator is one of the main concerns in designing and developing a new piece of equipment. Designers and manufactures build in as many safety features as possible. However, every year many accidents occur which could have been avoided by a few seconds of thought and a more careful approach to handling equipment. You, the operator, can avoid many accidents by observing the following precautions in this section. To avoid personal injury, study the following precautions and insist those working with you, or for you, follow them.

In order to provide a better view, certain photographs or illustrations in this manual may show an assembly with a safety shield removed. However, equipment should never be operated in this condition. Keep all shields in place. If shield removal becomes necessary for repairs, replace the shield prior to use.

Replace any CAUTION, WARNING, DANGER or instruction safety decal that is not readable or is missing. Location of such decals are indicated in this manual.

Do not attempt to operate this equipment under the influence of drugs or alcohol.

Review the safety instructions with all users annually.

This equipment is dangerous to children and persons unfamiliar with its operation. The operator should be a responsible adult familiar with farm machinery and trained in this equipment's operations. Do not allow persons to operate or assemble this unit until they have read this manual and have developed a thorough understanding of the safety precautions and of how it works.

To prevent injury or death, do not paint over, remove or deface any safety signs or warning decals on your equipment. Observe all safety signs and practice the instructions on them.

Never exceed the limits of a piece of machinery, in its ability to do a job, or to do so safely, is in question - **DON'T TRY IT.**



LIGHTING AND MARKING

It is the responsibility of the customer to know the lighting and marking requirements of the local highway authorities and to install and maintain the equipment to provide compliance with the regulations. Add extra lights when transporting at night or during periods of limited visibility.



KEEP ALL SHIELDS IN PLACE

Do not operate feeder delivery box without safety shields in place.

Rotating parts can crush or dismember causing personal injury or death.

Disengage power supply and turn off engine before removing shields for adjustment or service.



OPERATE FEEDER SAFELY

Rotating parts can entangle or strike people, resulting in personal injury or death.

Never enter a feeder delivery box while in operation.

Operate the feeder delivery box from the operator's seat only.

Do not exceed load capacity of the feeder delivery box. (See loading instructions).

Reduce speed when turning or traveling on rough terrain.

Avoid traveling over loose fill, rocks, ditches or holes.

Keep transmissions in gear when traveling downhill.



KEEP RIDERS OFF FEEDER BOX

Keep riders off.

Riders are subject to injury such as being struck by foreign objects and being thrown off. Riders also obstruct the operator's view resulting in the machine being operated in an unsafe manner.



PREVENT BATTERY EXPLOSIONS

Keep sparks, lighted matches, and open flame away from the top of battery. Battery gas can explode.

Never check battery charge by placing a metal object across the posts. Use a volt-meter or hydrometer.

Do not charge a frozen battery; it may explode. Warm battery to 16C (60F)



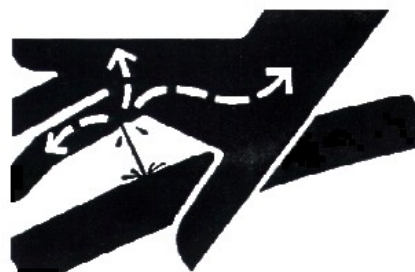
AVOID HIGH-PRESSURE FLUIDS

Escaping fluid under pressure can penetrate the skin causing serious injury or death.

Avoid the hazard relieving pressure before disconnecting hydraulic or other lines. Tighten all connections before applying pressure.

Search for leaks with a piece of cardboard. Protect hands and body from high pressure fluids.

If an accident occurs, see a doctor immediately. Any fluid injected into the skin must be surgically removed within a few hours or gangrene may result. Doctors unfamiliar with this type of injury should reference a knowledgeable medical source.





PRACTICE FIRE PREVENTION

Keep fire extinguishers accessible at all times. Use the extinguisher recommended for the material being processed. It should be rated safe for use on electrical fires.

Never smoke close to combustible material.

Clean the area before welding or other activities which may make sparks.

Keep all components that generate excessive heat clear of oil and other combustible materials.



SAFETY DECAL CARE

Keep safety decals and signs clean and legible at all times.

Replace safety decals and signs that are missing or have become illegible.

Replaced parts that displayed a safety sign should also display the current sign.

Safety decals or signs are available from your dealer or the ROTO-MIX manufacturing plant.

How to Install Safety Decals:

Be sure that the installation area is clean and dry.

Decide on the exact position before you remove the backing paper.

Remove the smallest portion of the split backing paper.

Align the decal over the specified area and carefully press the small portion with the exposed sticky backing in place.

Slowly peel back the remaining paper and carefully smooth the remaining portion of the decal in place.

Small air pockets can be pierced with a pin and smoothed out using the piece of decal backing paper.



REMEMBER

Your best assurance against accidents is a careful and responsible operator. If there is any portion of this manual or function you do not understand, contact your dealer or the ROTO-MIX plant.

BEFORE OPERATION:

Carefully study and understand this manual.

Do not wear loose-fitting clothing which may catch in moving parts.

Always wear protective clothing and substantial shoes.

Keep wheel lug nuts or bolts tightened to specified torque.

Assure that all tires are inflated to the tire manufactures specifications.

Give the unit a visual inspection for any loose bolts, worn parts or cracked welds, and make necessary repairs. Follow the maintenance safety instructions included in this manual.

Be sure that there are no tools lying on or in the feeder delivery box.

Do not use the unit until you are sure that the area is clear, especially children and animals.

Because it is possible that this feeder delivery box may be used in dry areas or the presence of combustibles, special precautions should be taken to prevent fires and fire fighting equipment should be readily available.

Don't hurry the learning process or take the unit for granted. Ease into it and become familiar with your new feeder delivery box.

Practice operation of your feeder delivery box and its attachments. Completely familiarize yourself and other operators with its operation before using.



DURING OPERATION:

Beware of bystanders, **particularly children!** Always look around to make sure that it is safe to start the engine of the vehicle or move the unit. This is particularly important with higher noise levels and quiet cabs, as you may not hear people shouting.

NO PASSENGERS ALLOWED - Do not carry passengers anywhere on, or in, the truck or equipment, except as required for operation.

Keep hands and clothing clear of moving parts.

Do not clean, lubricate or adjust your feeder delivery box while it is moving.

Be especially observant of the operating area and terrain - watch for holes, rocks or other hidden hazards. Always inspect the area prior to operation.

Do not operate near the edge of drop-offs or banks.

Do not operate on steep slopes as overturn may result.

Operate up and down (not across) intermediate slopes. Avoid sudden starts and stops.

Pick the levellest possible route when transporting across fields. Avoid the edges of ditches or gullies and steep hillsides.

Be extra careful when working on inclines.

Periodically clear the equipment of brush, twigs or other materials to prevent buildup of dry combustible materials.

Maneuver the equipment at safe speeds.

Avoid overhead wires or other obstacles. Contact with overhead lines could cause serious injury or death.

Avoid loose fill, rocks and holes; they can be dangerous for equipment operation or movement. Allow for unit length when making turns.

Do not walk or work under raised components or attachments unless securely positioned and blocked.

Keep all bystanders, pets and livestock clear of the work area.

Operate the equipment from the operator's seat only.

Never stand alongside of the unit with engine running. Never attempt to start engine and/or operate machine while standing alongside of unit.



DURING OPERATION (CONT.):

Never leave running feeder delivery box unattended.

As a precaution, always recheck the hardware on feeder delivery box following every 100 hours of operation. Correct all problems. Follow the maintenance safety procedures.



FOLLOWING OPERATION:

Following operation, stop the equipment, set the brakes, disengage all power drives, shut off the engine and remove the ignition keys.

Store the unit in an area away from human activity.

Do not park equipment where it will be exposed to livestock for long periods of time. Damage and livestock injury could result.

Do not permit children to play on or around the stored unit.

Make sure parked machine is on a hard, level surface and engage all safety devices.



HIGHWAY AND TRANSPORT OPERATIONS:

Adopt safe driving practices:

Always drive at a safe speed relative to local conditions and ensure that your speed is low enough for an emergency stop to be safe and secure. Keep speed to a minimum.

Reduce speed prior to turns to avoid the risk of overturning.

Avoid sudden uphill turns on steep slopes.

Do not coast with truck in neutral position.

Do not drink and drive.

Comply with state and local laws governing highway safety and movement of farm machinery on public roads.

Use approved accessory lighting, flags and necessary warning devices to protect operators of other vehicles on the highway during daylight and nighttime transport.

The use of flashing amber lights is acceptable in most localities. However, some localities prohibit their use. Local laws should be checked for all highway lighting and marking requirements.



HIGHWAY AND TRANSPORTIONS (CONT.):

When driving the feeder delivery box on the road or highway under 20 MPH (40 KPH) at night or during the day, use flashing amber warning lights and a slow moving vehicle (SMV) identification emblem.

Plan your route to avoid heavy traffic.

Be a safe courteous driver. Always yield to oncoming traffic in all situations, including narrow bridges, intersections, etc.

Be observant of bridge loading ratings. Do not cross bridges rated lower than the gross weight at which you are operating.

Watch for obstructions overhead and to the side while transporting.

Always operate feeder delivery box in a position to provide maximum visibility at all times. Make allowances for increased length and weight of the feeder delivery box when making turns, stopping the unit, etc.



PERFORMING MAINTENANCE:

Good maintenance is your responsibility. Poor maintenance is an invitation to trouble.

Make sure there is plenty of ventilation. Never operate the engine of the vehicle in a closed building. The exhaust fumes may cause asphyxiation.

Before working on the feeder delivery box, stop the vehicle, set the brakes, disengage all power drives, shut off the engine and remove the ignition keys.

Be certain all moving parts on attachments have come to a complete stop before attempting to perform maintenance.

Always use a safety support and block the wheels. Never use a jack to support the machine.

Always use the proper tools or equipment for the job at hand.

Use extreme caution when making adjustments.

Never use your hands to locate hydraulic leaks on attachments. Use a small piece of cardboard or wood. Hydraulic fluid escaping under pressure can penetrate the skin.

When disconnecting hydraulic lines, shut off hydraulic supply and relieve all hydraulic pressure.

Openings in the skin and minor cuts are susceptible to infection from hydraulic fluid. If injured by escaping hydraulic fluid, see a doctor at once. Gangrene can



PERFORMING MAINTENANCE(CONT.):

result. Without immediate treatment, serious infection and reactions can occur.

Replace all shields and guards after servicing and before moving.

After servicing, be sure all tools, parts and service equipment are removed.

Do not allow grease or oil to build up on any step or platform.

Never replace hex bolts with less than grade five (5) bolts unless otherwise specified.

Where replacement parts are necessary for periodic maintenance and servicing, genuine factory replacement parts must be used to restore your equipment to original specifications. ROTO-MIX will not claim responsibility for use of unapproved parts and/or accessories and other damages as a result of their use.

If equipment has been altered in any way from original design, ROTO-MIX does not accept any liability for injury or warranty.

A fire extinguisher and first aid kit should be kept readily accessible while performing maintenance on this feeder delivery box.



READ THE FOLLOWING BEFORE WELDING ON THIS FEEDER DELIVERY BOX

When welding on your feeder delivery box, do not allow the current to flow through the ball bearings or the conveyor chains. Ground directly to the item being welded.

Always disconnect the scale instrumentation from the weigh bars or load cells and the power source. Be sure the current does not pass through weigh bars or load cells or scale indicator. The alternator should always be disconnected.

⚠ WARNING APPLY THE PARKING BRAKE, TURN OFF ENGINE AND REMOVE IGNITION KEY BEFORE CLEANING, ADJUSTING, LUBRICATING OR SERVICING THIS MACHINE.

LUBRICATION CHART

DISENGAGE PTO & SHUT OFF POWER BEFORE LUBRICATING THE MACHINE.

LOOSE OR FLOPPY CLOTHING SHOULD NOT BE WORN BY THE OPERATOR.

CHAIN BOX: Fill the chain box with 30 weight motor oil to sight plug level.

GREASE BANK: Grease every 100 hours. **DO NOT OVER GREASE !!!**

FRONT END BEARINGS: Grease every 100 hours.

INPUT GEARINGS: (On input shaft beneath feeder) grease every 100 hours.

PTO SHAFTS & U-JOINTS: Grease every 10 to 20 hours.

GEARBOX: Prior to operation, remove the uppermost plug and replace with vent plug provided. After the first 100 hours of operation, drain initial oil, preferably warm. Flush out the gear case with an approved non-flammable, non-toxic solvent and refill with oil. Thereafter oil should be changed every 2500 hours or every 6 months, whichever comes first. Fill the gearbox with 1-1/2 pints of **(Mobil Delvac Synthetic Gear Oil 75W-90)**.

800-14 SPECIFICATIONS

Capacity (cubic feet).....	620
With 8" Extensions.....	700
With 12" Extensions.....	740
With 18" Extensions.....	800
Auger Bottoms.....	1/4"
Lower Auger Ends.....	1/4"
Upper Auger Ends.....	3/16"
Sides Reinforced with Stakes.....	12GA
Auger Tube OD and Walls.....	6-5/8" x 7/16"
Auger Flights.....	1/2" x 30" OD
Auger Drive Roller Chains.....	#120
Auger Shaft 4140 Spline	
With Double Roller Bearing.....	3-1/2" spl
Cross Augers.....	9" OD
Cross Auger Drive-Roller Chain.....	#60 & #80
Discharge Conveyor Augers.....	9" OD
Discharge Conveyor Drive.....	#50

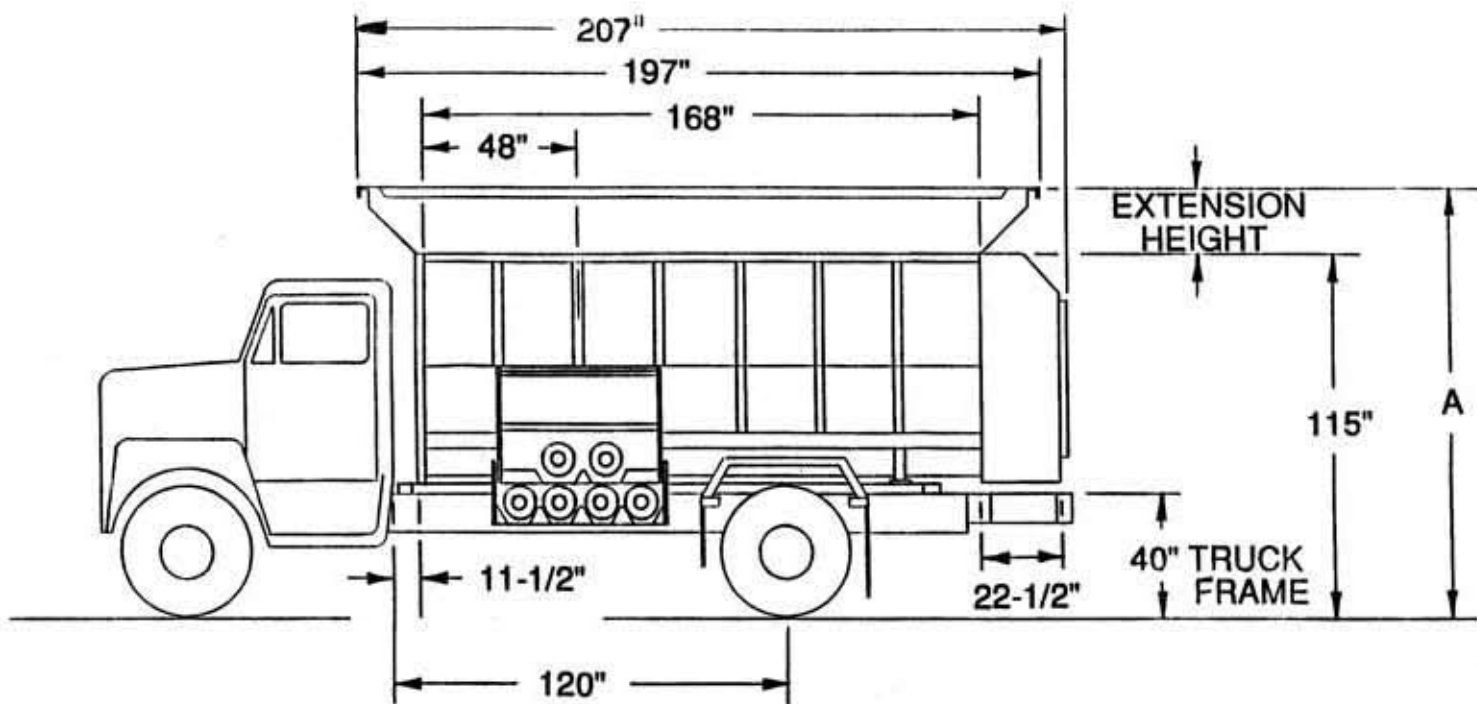
1000-16 SPECIFICATIONS

Capacity (cubic feet).....	750
With 8" Extensions.....	830
With 12" Extensions.....	880
With 18" Extensions.....	950
Auger Bottoms.....	1/4"
Lower Auger Ends.....	1/4"
Upper Auger Ends.....	3/16"
Sides Reinforced with Stakes.....	12GA
Auger Tube OD and Walls.....	6-5/8" x 7/16"
Auger Flights.....	1/2" x 30" OD
Auger Drive Roller Chains.....	#120
Auger Shaft 4140 Spline	
With Double Roller Bearing.....	3-1/2" spl
Cross Augers.....	9" OD
Cross Auger Drive-Roller Chain.....	#60 & #80
Discharge Conveyor Augers.....	9" OD
Discharge Conveyor Drive.....	#50

1200-20 SPECIFICATIONS

Capacity (cubic feet).....	900
With 8" Extensions.....	1000
With 12" Extensions.....	1100
With 18" Extensions.....	1200
Auger Bottoms.....	1/4"
Lower Auger Ends.....	1/4"
Upper Auger Ends.....	3/16"
Sides Reinforced with Stakes.....	12GA
Auger Tube OD and Walls.....	8-5/8" x 7/16"
Auger Flights.....	1/2" x 30" OD
Auger Drive Roller Chains.....	#140
Auger Shaft 4140 Spline	
With Double Roller Bearing.....	4" spl
Cross Augers.....	9" OD
Cross Auger Drive-Roller Chain.....	#60 & #80
Discharge Conveyor Augers.....	9" OD
Discharge Conveyor Drive.....	#50

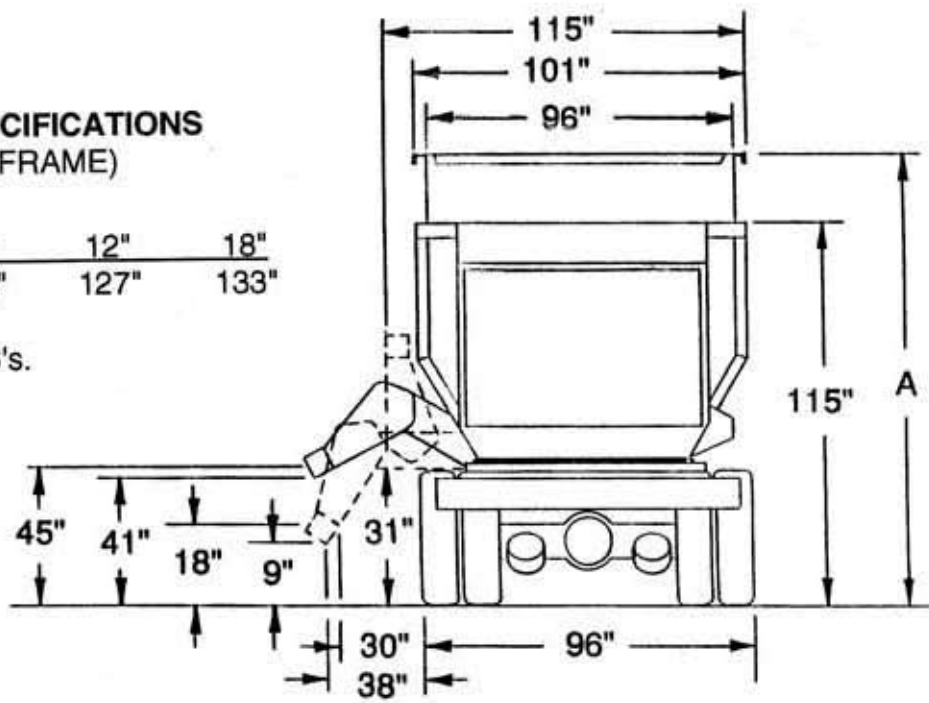
800-14 TRUCK DIMENSIONS



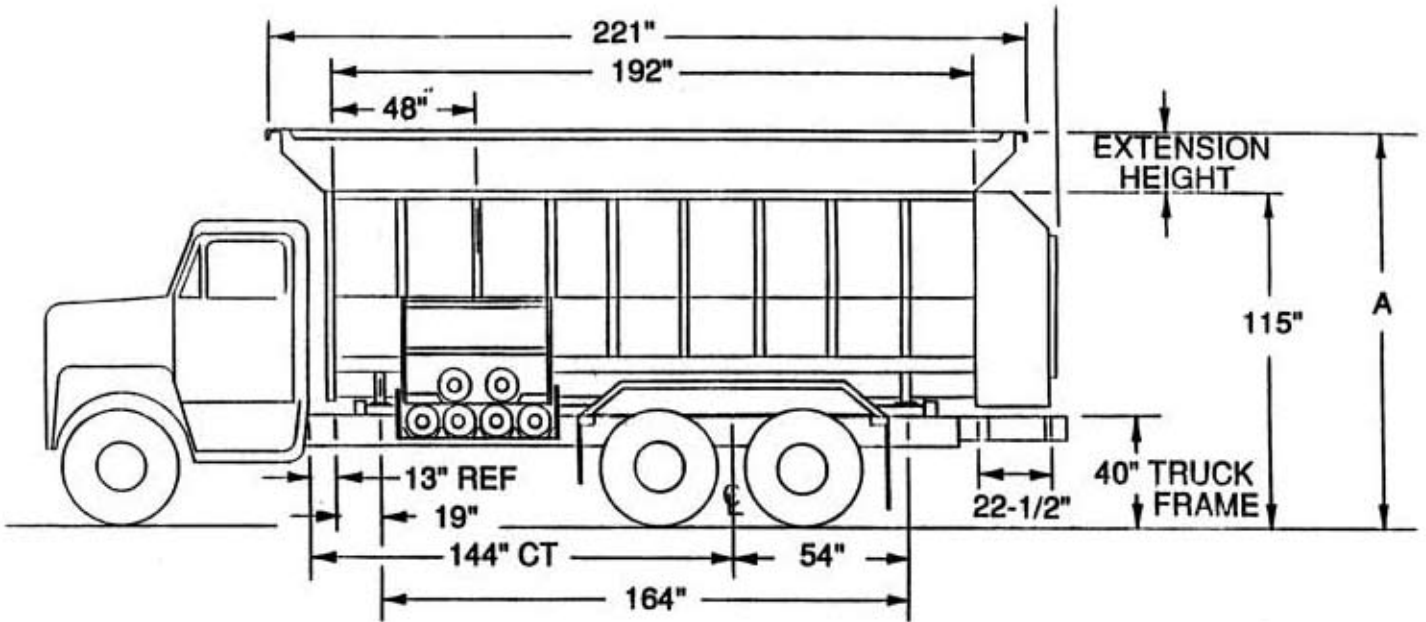
800-14 TRUCK MOUNTING SPECIFICATIONS (BASED ON A 40" TRUCK FRAME)

HEIGHT WITH EXTENSION	8"	12"	18"
DIMENSION A	123"	127"	133"

INSTALLATION WEIGHT 11,000 LB's.



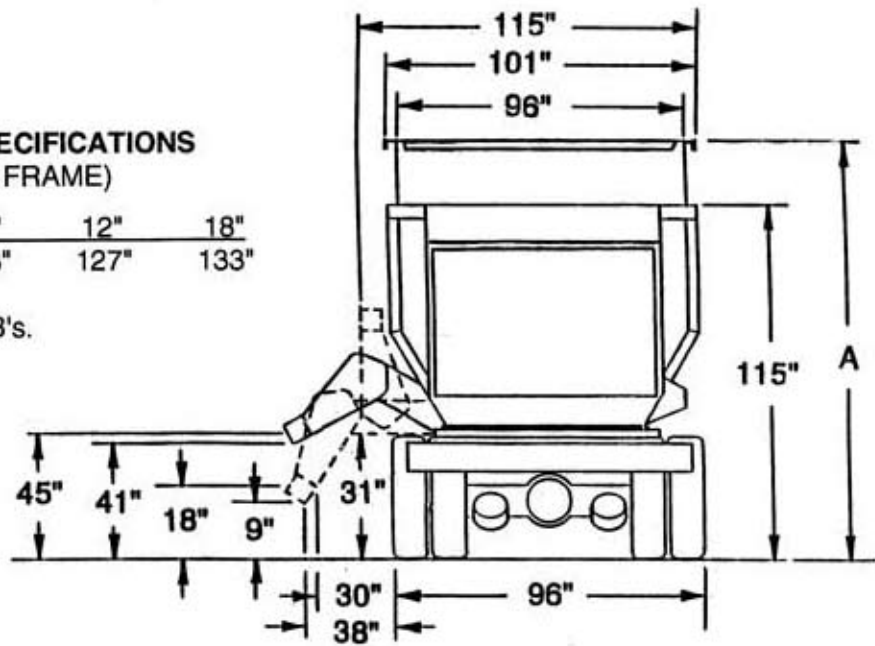
1000-16 TRUCK DIMENSIONS



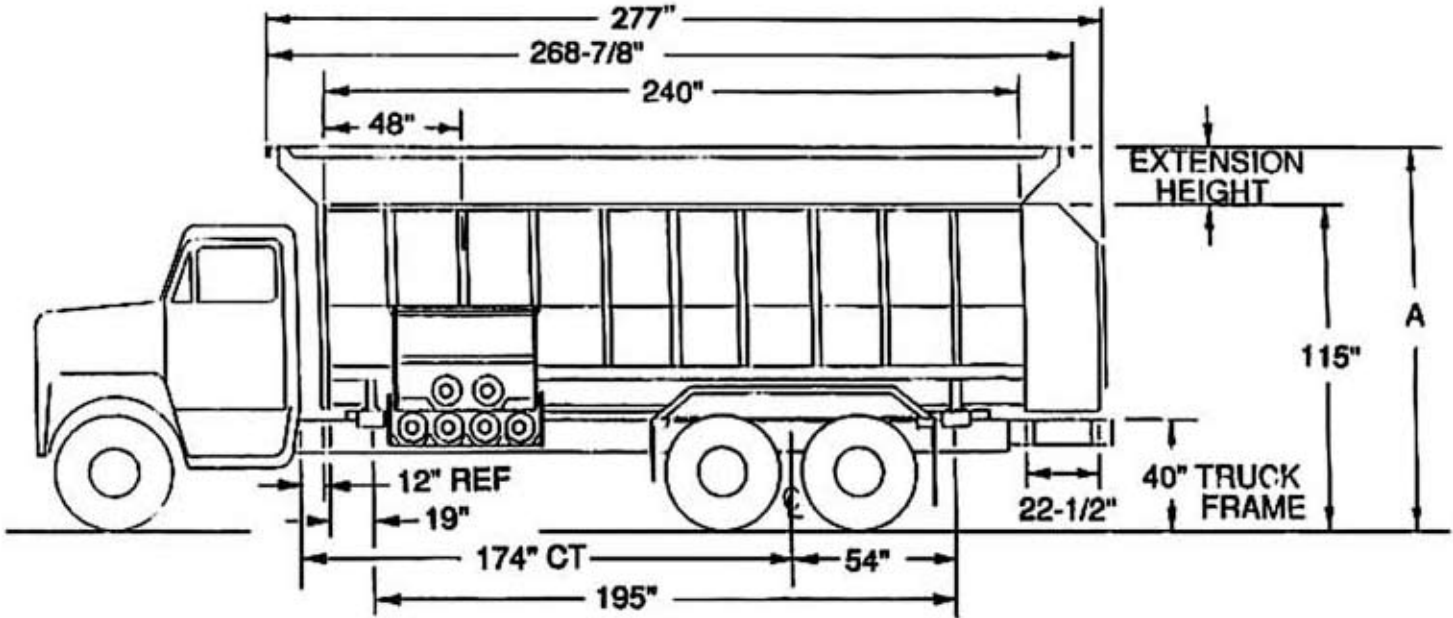
1000-16 TRUCK MOUNTING SPECIFICATIONS (BASED ON A 40" TRUCK FRAME)

HEIGHT WITH EXTENSION	8"	12"	18"
DIMENSION A	123"	127"	133"

INSTALLATION WEIGHT 12,800 LB's.



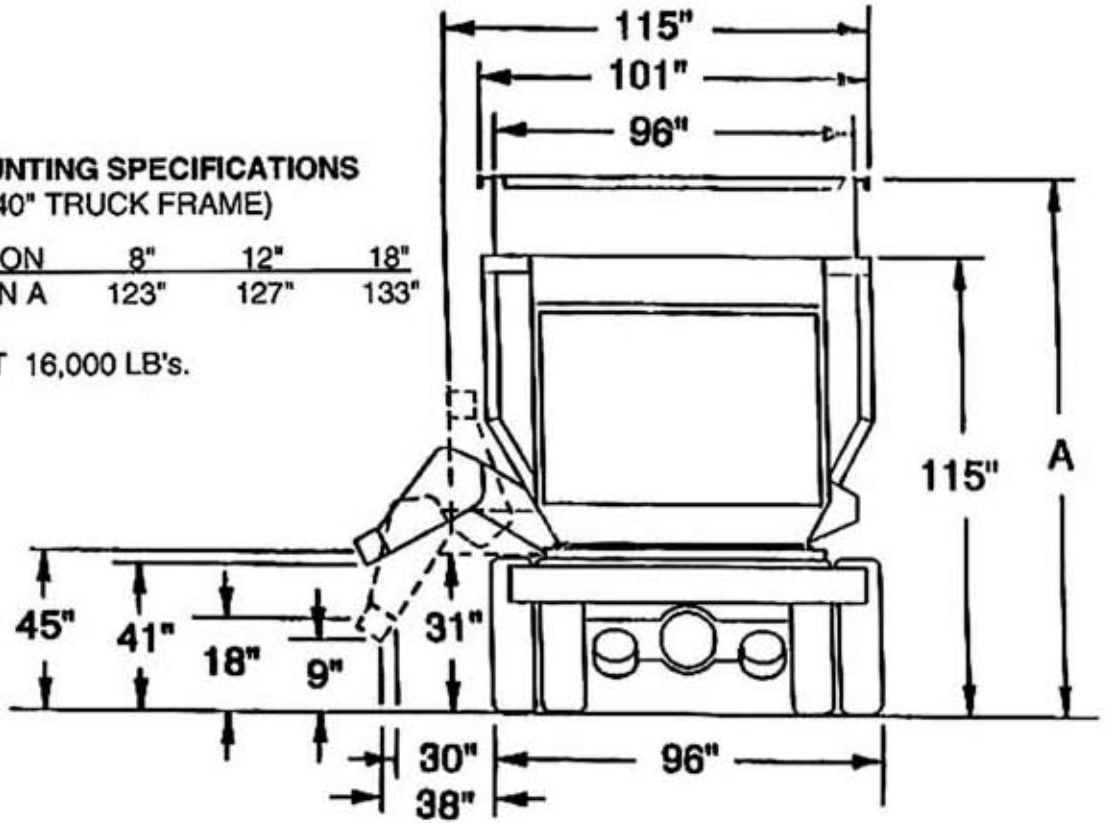
1200-20 TRUCK DIMENSIONS



1200-20 TRUCK MOUNTING SPECIFICATIONS (BASED ON A 40" TRUCK FRAME)

HEIGHT WITH EXTENSION	8"	12"	18"
DIMENSION A	123"	127"	133"

INSTALLATION WEIGHT 16,000 LB's.



EXTENSION SPECIFICATION

PART NO.	DESCRIPTION
188224.....	8" EXTENSION END
188333.....	12" EXTENSION END
188135.....	18" EXTENSION END
874052.....	8" EXTENSION SIDE x 14 FT.
874085.....	8" EXTENSION SIDE x 16 FT.
874089.....	8" EXTENSION SIDE x 20 FT.
874086.....	12" EXTENSION SIDE x 14 FT.
874087.....	12" EXTENSION SIDE x 16 FT.
874090.....	12" EXTENSION SIDE x 20 FT.
874029.....	18" EXTENSION SIDE x 14 FT.
874088.....	18" EXTENSION SIDE x 16 FT.
874067.....	18" EXTENSION SIDE x 20 FT.

24" EXTENSIONS ARE AVAILABLE UPON REQUEST.

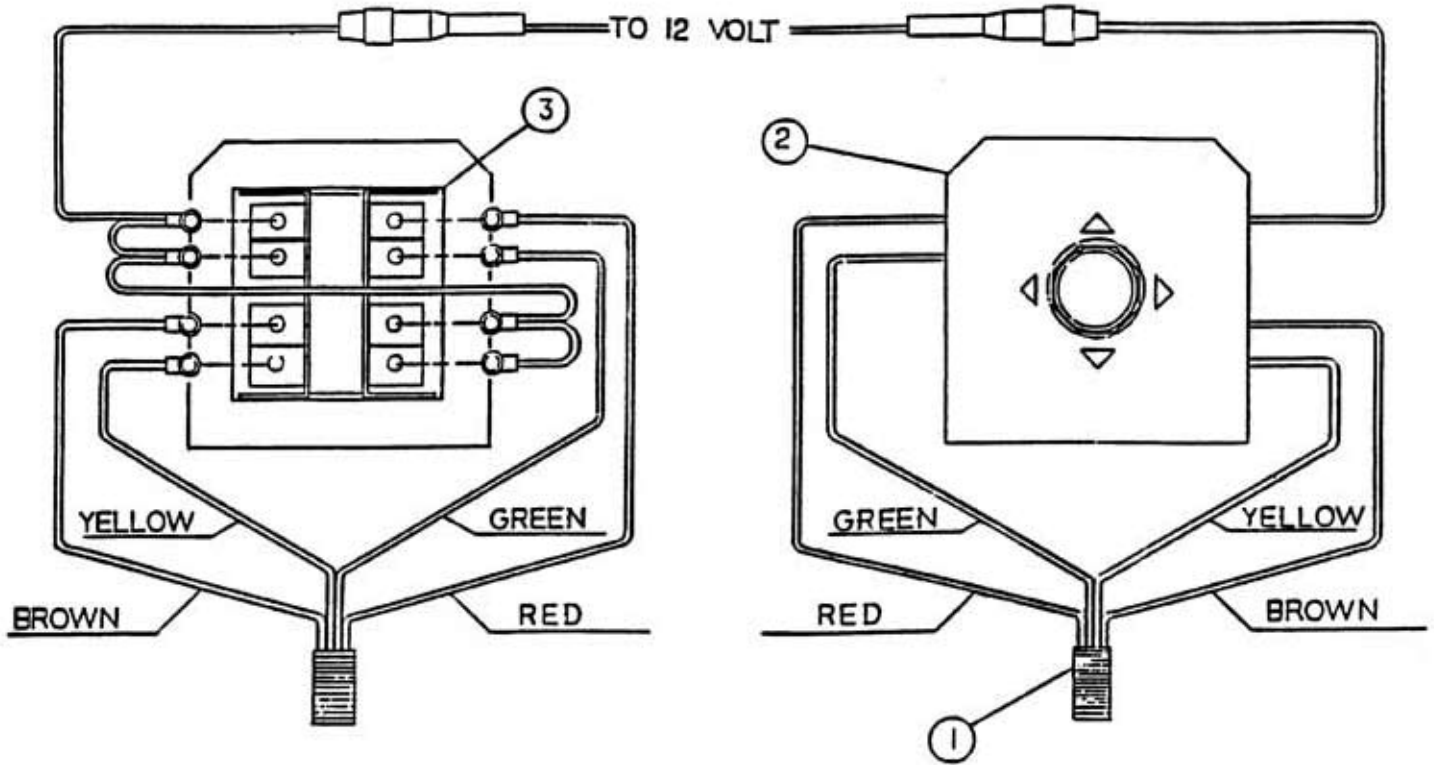
PARTS PAGES TABLE OF CONTENTS

Joystick Assembly.....	26
Discharge Wire Schematic.....	27
Hydraulic Schematic (Conveyor, Spout & Straight Door	28
Oil Reservoir	29
Hydraulic Pump.....	30
Triple Hydraulic Valve	31
Gearbox & Conveyor Hydraulic Schematic	32
Fender & Mud Flap Options	33
Feeder 14” Spout Assembly	34
Spout Rubber	35
Spout Magnet	36
Feeder Ladder Assembly	37
800-14, 1000-16 & 1200-20 Auger Assembly.....	38
Front End Sheet Assembly	39
800-14, Drive Assembly.....	40-41
1000-16 Drive Assembly.....	42-43
1200-20 Drive Assembly.....	44-45
Lubrication Assembly	46
800-14 Feeder Driveline.....	47
1000-16 & 1200-20 Feeder Driveline	48
800-14 Scale Frame.....	49
1000-16 Scale Frame.....	50
1200-20 Scale Frame.....	51
Oil Bath Door Assemblies (New & Old).....	52-53
Feeder Discharge Assembly.....	54
Conveyor Assembly	55
800-1000 Feeder Cross Auger Driveline	56
1200 Feeder Cross Auger Driveline.....	57
Cross Auger Assembly	58
Feeder Drive 50% Slow Down (Optional).....	59
Hydrostat Drive, Electric Displacement Control	60
Hydrostat Drive, Mechanical Cable Control	61

JOYSTICK ASSEMBLY

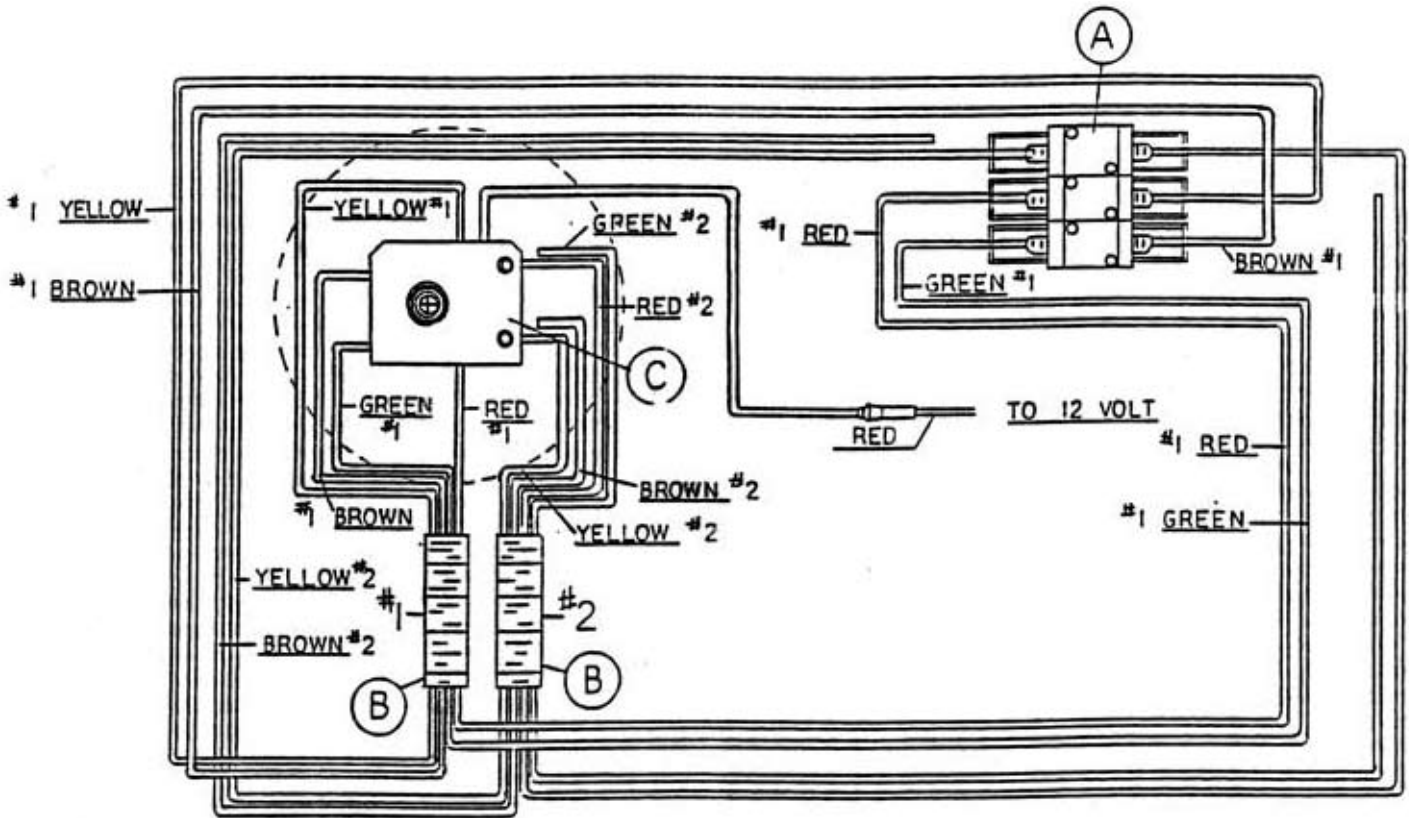
BOTTOM

TOP



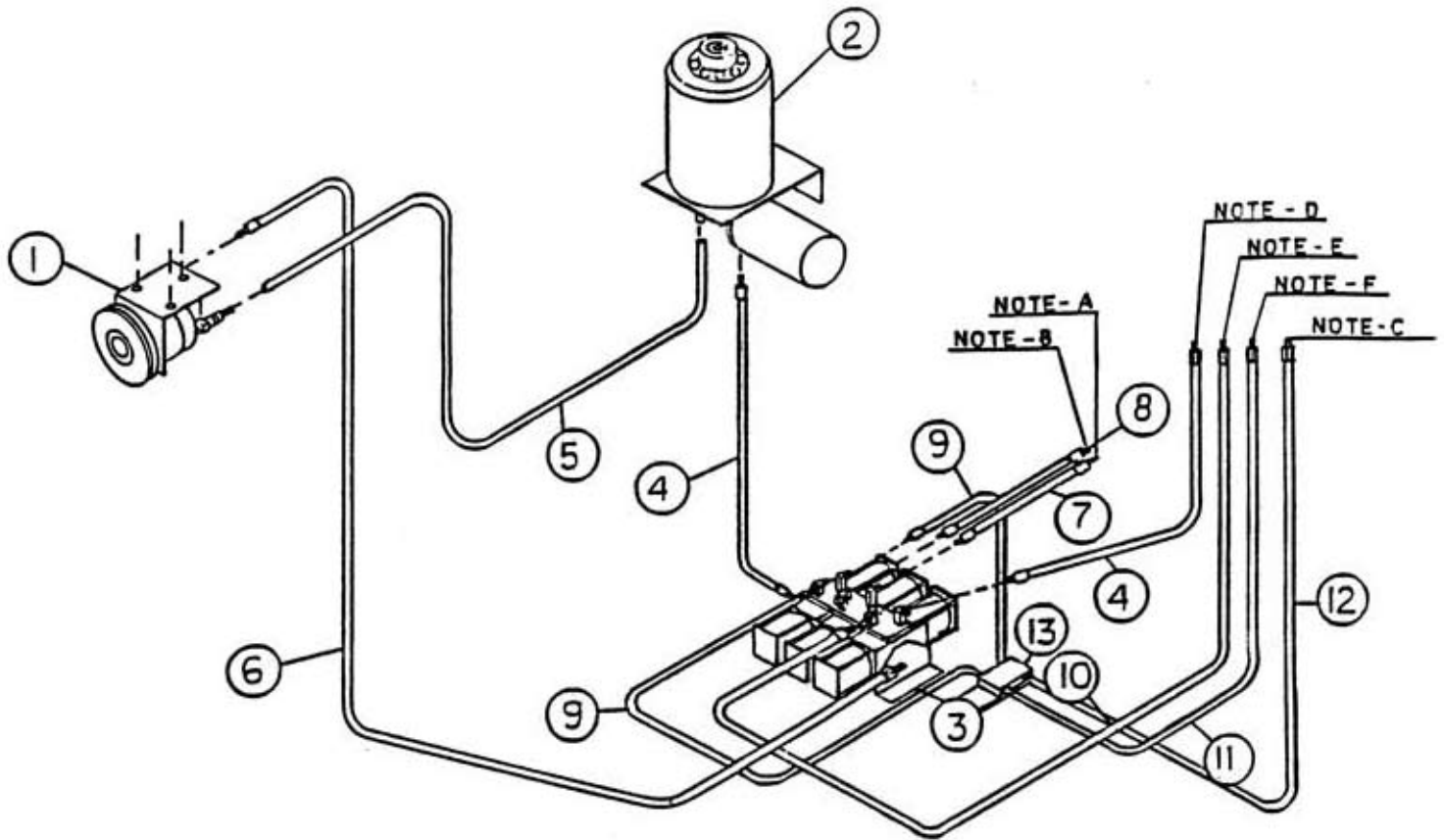
REF. NO.	PART NO.	DESCRIPTION	QTY.
1.	781056	SWITCH WIRE ASSEMBLY.....	1
2.	188226	JOYSTICK BRACKET.....	1
3.	780083	JOYSTICK SWITCH.....	1

DISCHARGE WIRE SCHEMATIC



REF. NO.	PART NO.	DESCRIPTION	QTY.
A	780121	FEEDER HYD. CONTROL VALVE ASSY.....	1
B	781055	TRUCK TO MIXER WIRE ASSY.....	2
C	780083	FEEDER SWITCH PANEL ASSY.....	1

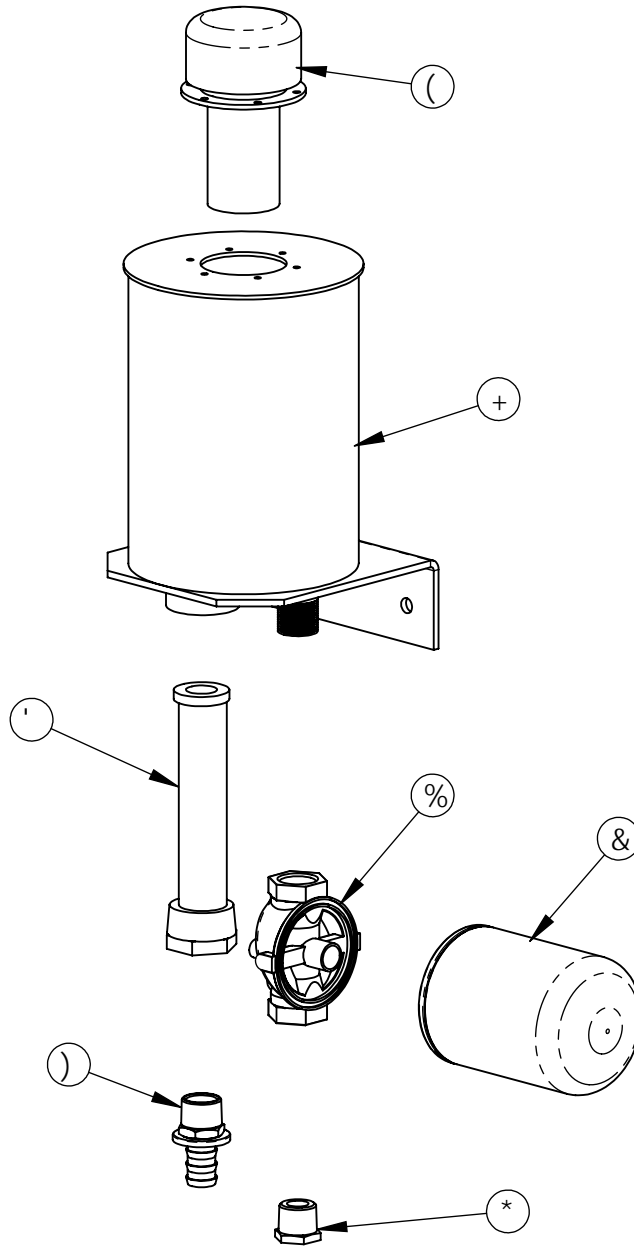
HYDRAULIC SCHEMATIC CONVEYOR, SPOUT & STRAIGHT DOOR



- NOTE A - CONNECT TO SPOUT CYL. BASE
 NOTE B - CONNECT TO SPOUT CYL. ROD END
 NOTE C - CONNECT TO CONVEYOR CYL. BASE
 NOTE D - CONNECT TO DOOR CYL. BASE
 NOTE E - CONNECT TO DOOR CYL. ROD END
 NOTE F - CONNECT TO CONVEYOR CYL. ROD END

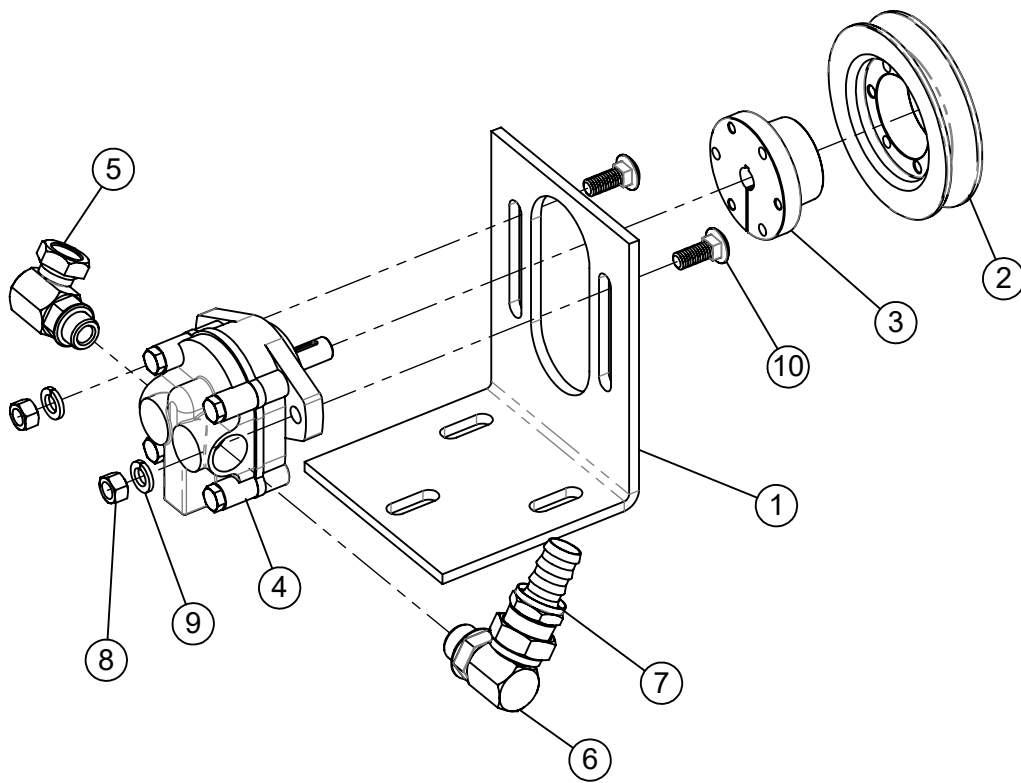
REF. NO.	PART NO.	DESCRIPTION	QTY.
1.	780064	HYDRAULIC PUMP ASSEMBLY.....	1
2.	780205	RESERVOIR ASSEMBLY.....	1
3.	780121	FEEDER HYD. CONTROL VALVE.....	1
4.	781061	3/8" x 42" HYD. HOSE ASSY (3/8"MP ENDS).....	2
5.	781313	1/2" x 118" HYD. HOSE ASSY (1/2"MP ENDS).....	1
6.	781312	1/2" x 104" HYD. HOSE ASSY (1/2"MP ENDS).....	1
7.	781072	3/8" x 136" HYD. HOSE ASSY (3/8"MP x 1/4"MP).....	1
8.	781094	3/8" x 154" HYD. HOSE ASSY (3/8"MP x 1/4"MP).....	1
9.	781310	3/8" x 24" HYD HOSE ASSY (3/8"MP x 1/4"MP).....	2
10.	781311	3/8" x 44" HYD. HOSE ASSY (3/8"MP ENDS).....	1
11.	781061	3/8" x 42" HYD. HOSE ASSY (3/8"MP x 1/4"MP).....	1
12.	781064	3/8" x 54" HYD. HOSE ASSY (3/8"MP x 1/4"MP).....	1
13.	362220	LOCK VALVE.....	1

OIL RESERVOIR ASSEMBLY (780205)



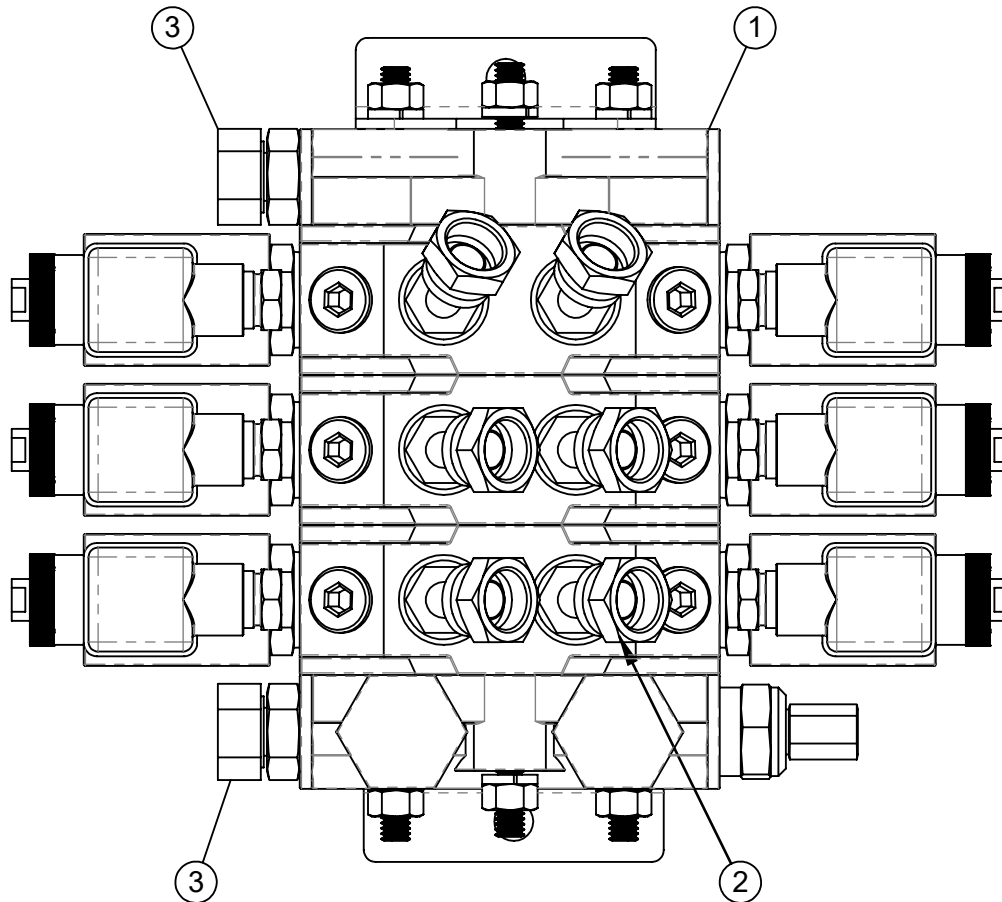
ITEM #	PART #	DESCRIPTION	QTY.
(' * & (\$'	: @PF ' < 95 8 ' # ("Z N5: ! \$+!&) ! \$	%
&	' * & ((\$: @PF ' 9@A 9BH! ' 5 9! % \$	%
'	' * &) \$ (GI 7 H C B ' G7 F 99B ' .	%
(' * &)) \$: @PF ' 7 5 D ' 5 GGM: ' @ C 9 9NM! ' 5 6 % \$\$\$!'	%
)	' *,) % &	DI G < ' @ C 7 ? ' < C G9 ' 65 F 6 fl # (l ' ' # (" A D	%
*	' *, * % &	GH99@6l G < B; ' ' # (" A D ' h c ' ' #, " : D	%
+	, + \$ (++	C @F 9 G9 F J C # ' K " 5 "	%

HYDRAULIC PUMP ASSEMBLY (780064)



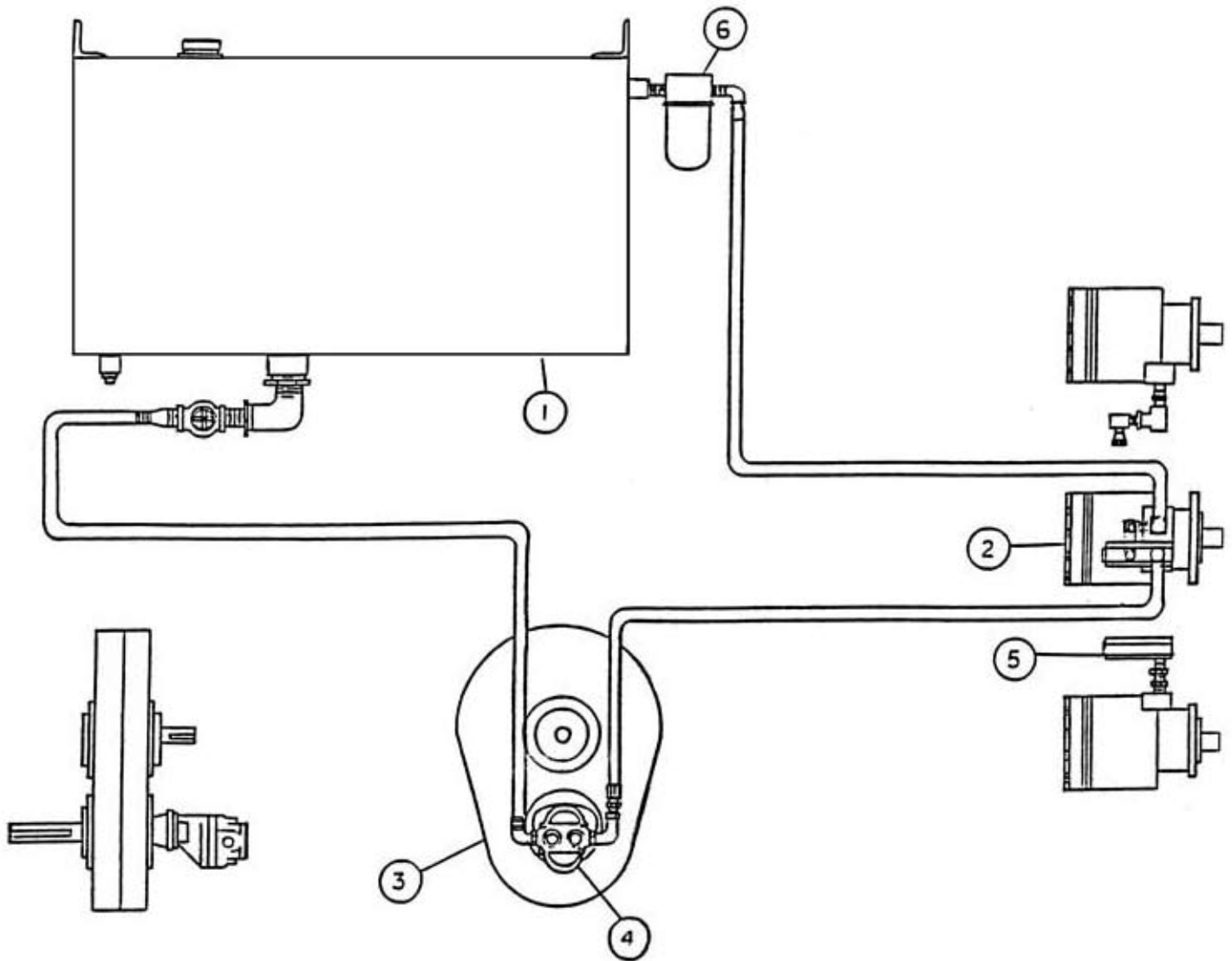
ITEM #	PART #	DESCRIPTION	QTY.
1	189053	EXT. HYDRAULIC PUMP BRACKET	1
2	324040	SHEAVE 1B x 4.0 SH	1
3	336008	BUSHING SH 1/2 QD	1
4	362017	PUMP D17AA2A (.40 CIR) CLOCKWISE PARKER	1
5	368040	SWIVEL 90v 3/8FP x 3/4MOR	1
6	368050	ADAPTER 7/8 MOR x 3/4 FPS 90	1
7	368512	PUSH LOCK HOSE BARB (3/4)x 3/4" MP	1
8	400206	HEX NUT 3/8"-16 #5 PLTD	2
9	402006	WASHER SPRING LOCK 3/8" MED PLTD	2
10	407040	CHCS 3/8"-16 x 1" #5 PLTD	2

TRIPLE HYDRAULIC VALVE (780121)



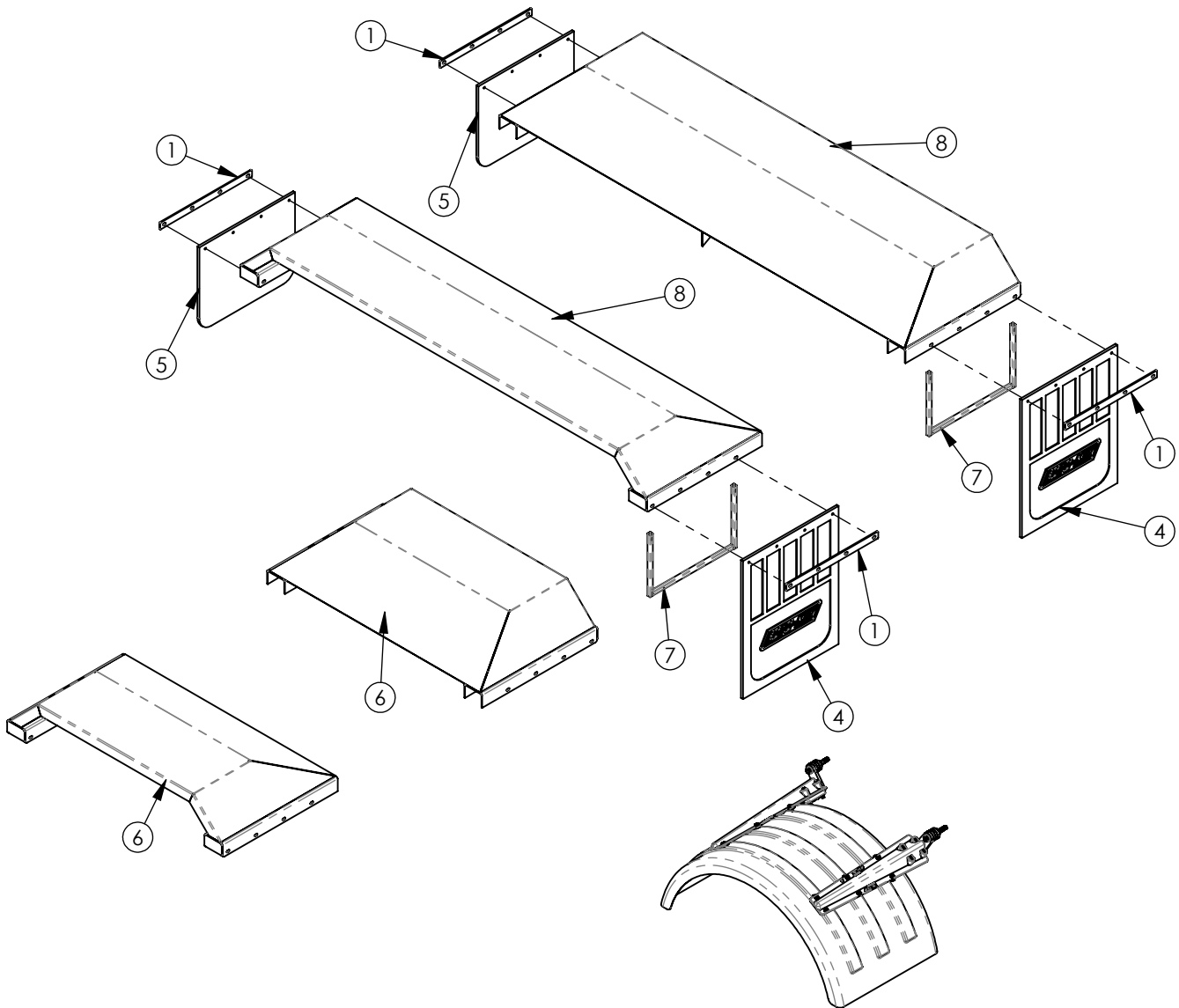
ITEM #	PART #	DESCRIPTION	QTY.
1	362212	HYD VALVE 12V TRIPLE, BUCHER	1
2	368024	HYD SWIVEL 9/16" MOR x 3/8" FPS 45°	6
3	368112	STR ADPT, 3/4" MOR x 3/8" FP	2

GEARBOX & CONVEYOR HYDRAULIC SCHEMATIC



REF. NO.	PART NO.	DESCRIPTION	QTY.
1.	874038	FEEDER HYDRAULIC RESERVOIR WELDMENT.....	1
2.	360000	HYDRAULIC MOTOR.....	1
3.	344025	GEARBOX WITH PUMP MOUNT.....	1
4.	362024	PARKER GEAR PUMP.....	1
5.	362230	RELIEF VALVE.....	1
6.	362404	1" FILTER ASSY.....	1

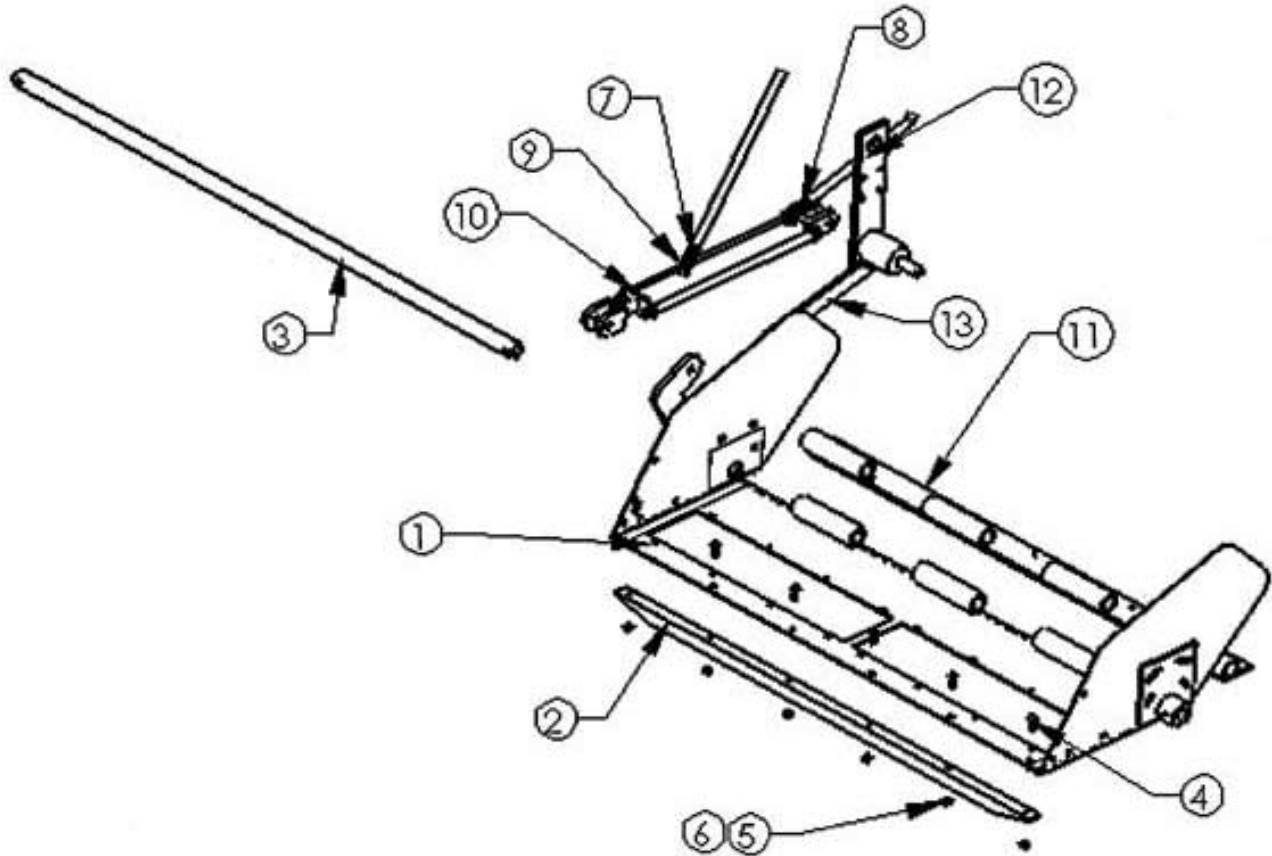
FENDERS & MUD FLAPS



ITEM #	PART #	DESCRIPTION	QTY.
1	183087	MUD FLAP STRAP	4
2	354391	POLY FENDER	1
3	354393	POLY FENDER TAPER BRACKET KIT (4 Brkt's per Kit)	2
4	370200	ROTO-MIX MUD FLAP 24" x 30"	2
5	370202	ROTO-MIX MUD FLAP 24" x 18-1/2"	2
6	872108	RIGHT FENDER W.A.	2
7	872120	MUD FLAP BRACKET WA	2
8	872130	TANDEM FENDER WA	2

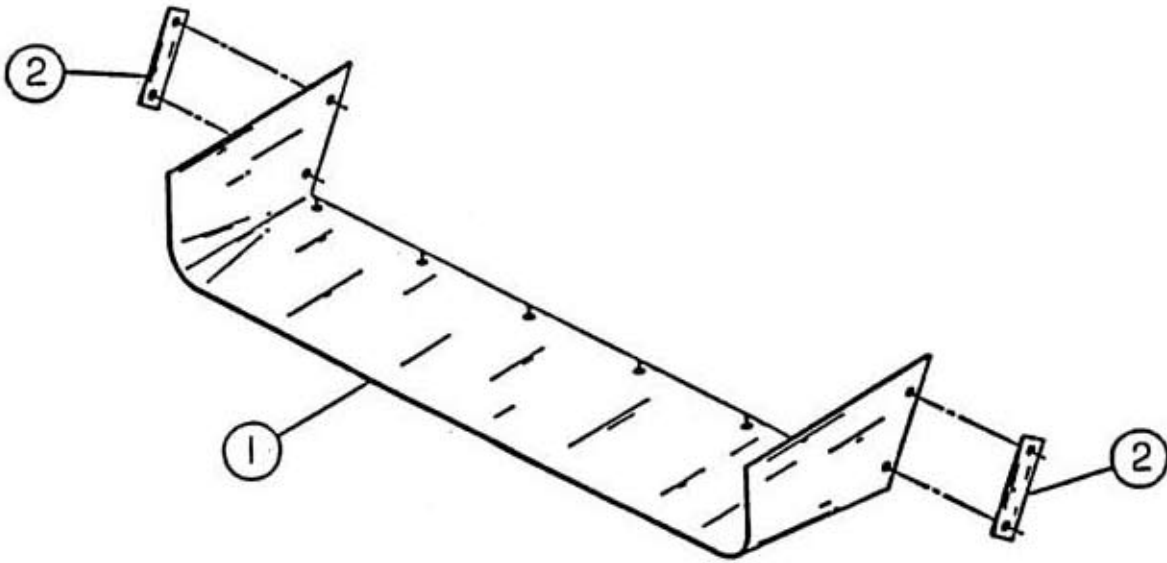
FEEDER 14" SPOUT ASSEMBLY

PART # 780503



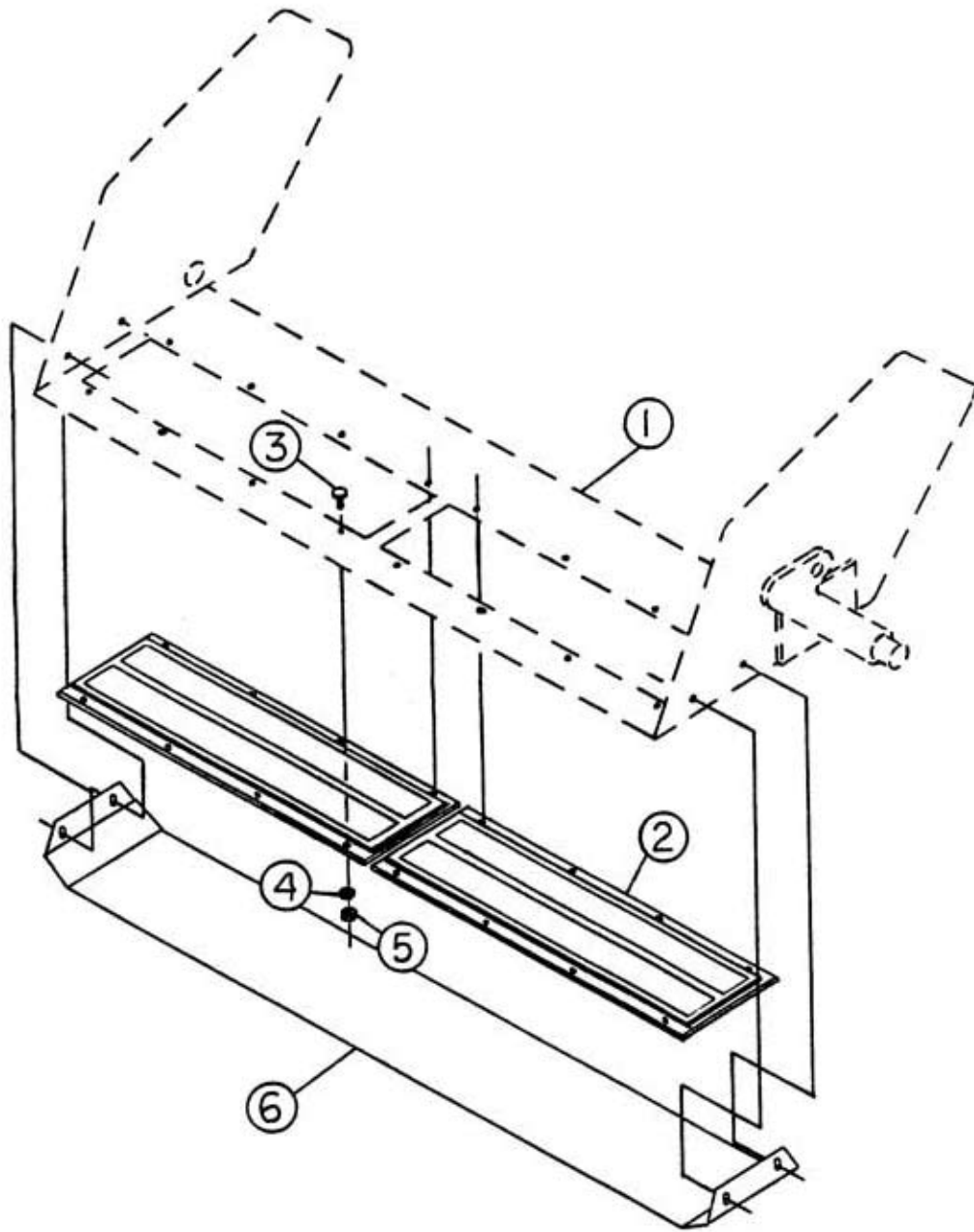
REF. NO.	PART NO.	DESCRIPTION	QTY.
1	874092	14" SPOUT WELDMANT.....	...1
2	183152	BACK-UP ANGLE - 47".....	...1
3	187184	SPOUT HINGE SHAFT.....	...1
4	407021	5/16" x 1" CARRIAGE BOLT.....	...6
5	402005	5/16" LOCKWASHER.....	...6
6	400205	5/16" HEX NUT.....	...6
7	781094	3/8" x 154" HYD. HOSE ASSY (3/8"MP x 1/4"MP).....	...1
8	781072	3/8" x 136" HYD. HOSE ASSY (3/8"MP x 1/4"MP).....	...1
9	368011	1/4"MP x 1/4"FPSW 90 DEG ELBOW 1/16" ORFICE..	...2
10	364040	1-1/2" x 16" HYD. CYLINDER.....	...1
11	874042	CONVEYOR SPOUT HINGE WELDMANT.....	...1
12	874051	CONVEYOR SPOUT CYL. BAR WELDMANT.....	...1
13	188221	FEEDER SPOUT CYL. BAR BRACE - 13".....	...1

SPOUT RUBBER



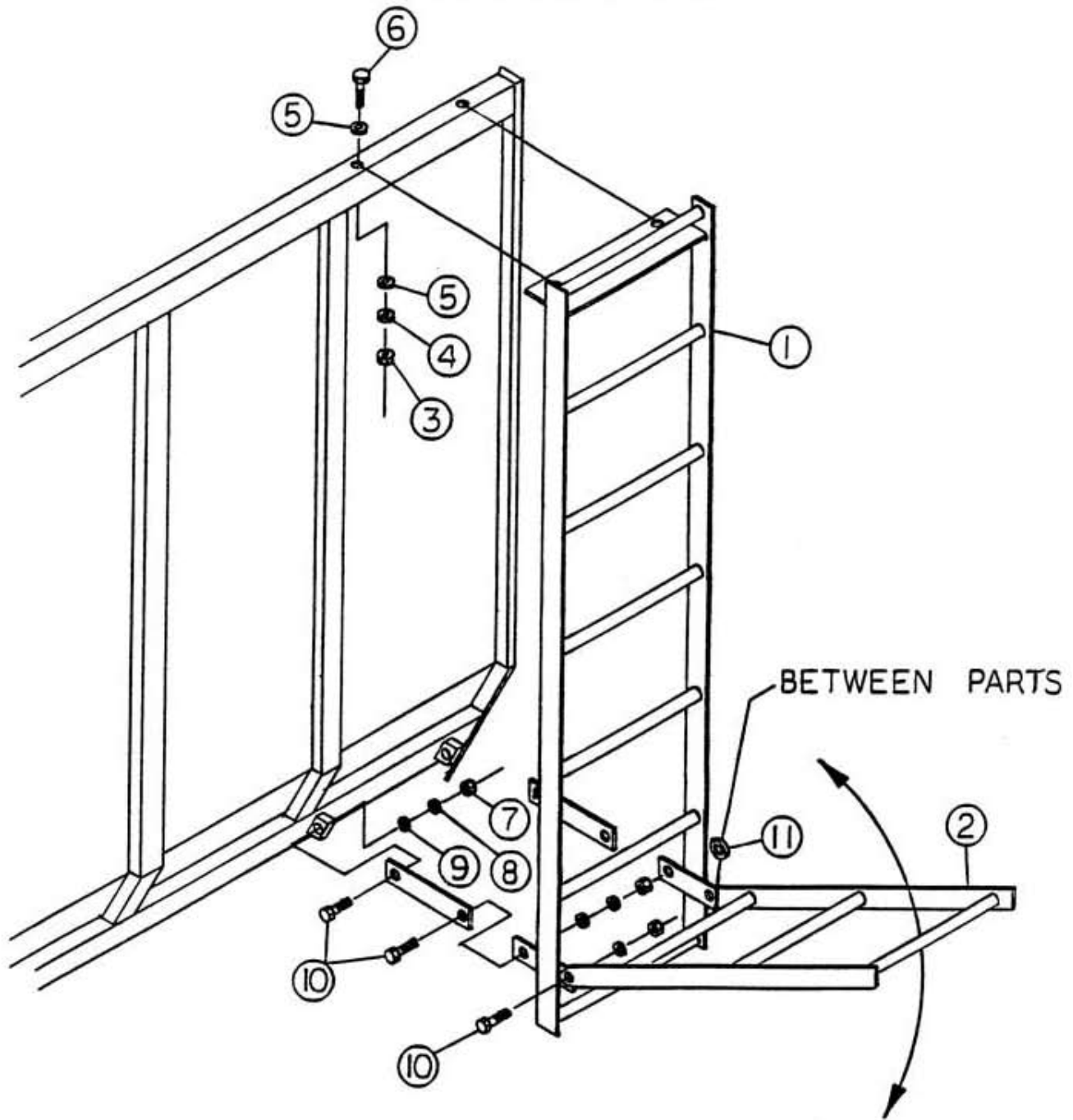
REF. NO.	PART NO.	DESCRIPTION	QTY.
1.	183145	SPOUT WINDSHIELD.....	1
2.	183160	BACK-UP STRAP.....	2

SPOUT MAGNET



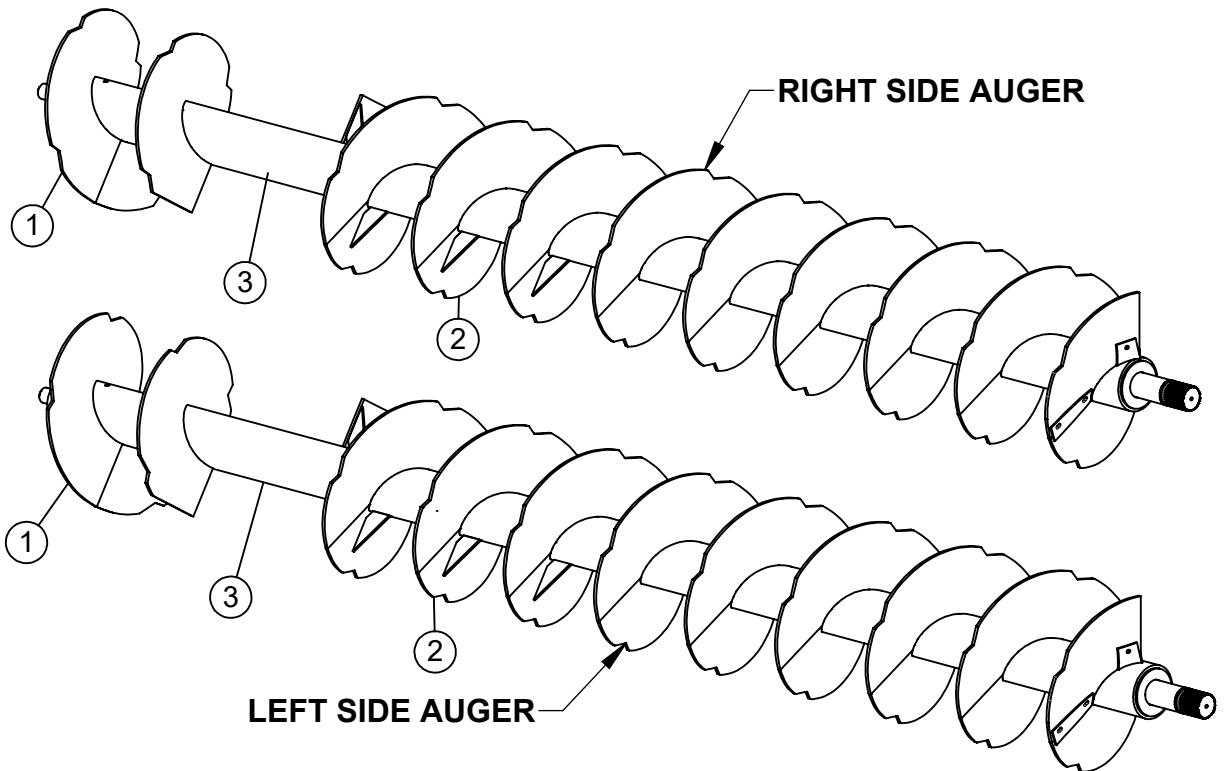
REF. NO.	PART NO.	DESCRIPTION	QTY.
1.	874092	14" SPOUT WELDMENT.....	1
2.	375005	AM 2200 ARCO MAGNET.....	2
3.	407021	5/16" x 1" CARRIAGE BOLT.....	16
4.	402005	5/16" LOCKWASHER.....	16
5.	400205	5/16" HEX NUT.....	16
6.	189079	SPOUT MAGNET GUARD.....	1

FEEDER LATTER ASSEMBLY



REF. NO.	PART NO.	DESCRIPTION	QTY.
1.	874039	FEEDER LADDER WELDMENT.....	1
2.	874040	FEEDER LADDER EXTENSION WELDMENT.....	1
3.	400306	3/8" HEX NUT.....	2
4.	402006	3/8" LOCKWASHER.....	2
5.	402406	3/8" FLAT WASHER.....	4
6.	405655	3/8" x 1-1/2" HHCS.....	2
7.	400307	7/16" HEX NUT.....	6
8.	402007	7/16" LOCKWASHER.....	4
9.	402407	7/16" FLAT WASHER.....	6
10.	405678	7/16" x 1-1/2" HHCS.....	6
11.	188173	LADDER PIVOT BUSHING.....	2

800-14, 1000-16 & 1200-20 AUGER ASSEMBLIES



800-14 FEEDER

ITEM #	PART #	DESCRIPTION	QTY.
1	383002	30"OD x 6 5/8"ID x 1/2" x 2/3P RH FLIGHT, NOTCHED	2
2	383003	30"OD x 6 5/8"ID x 1/2" x 2/3P LH FLIGHT, NOTCHED	9
3	874021	14' FEEDER RIGHT SIDE AUGER PIPE WA	1
4	874022	14' FEEDER LEFT SIDE AUGER PIPE WA	1
	874026	FEEDER AUGER WA, 14' RIGHT HAND, COMPLETE	1
	874027	FEEDER AUGER WA, 14' LEFT HAND, COMPLETE	1

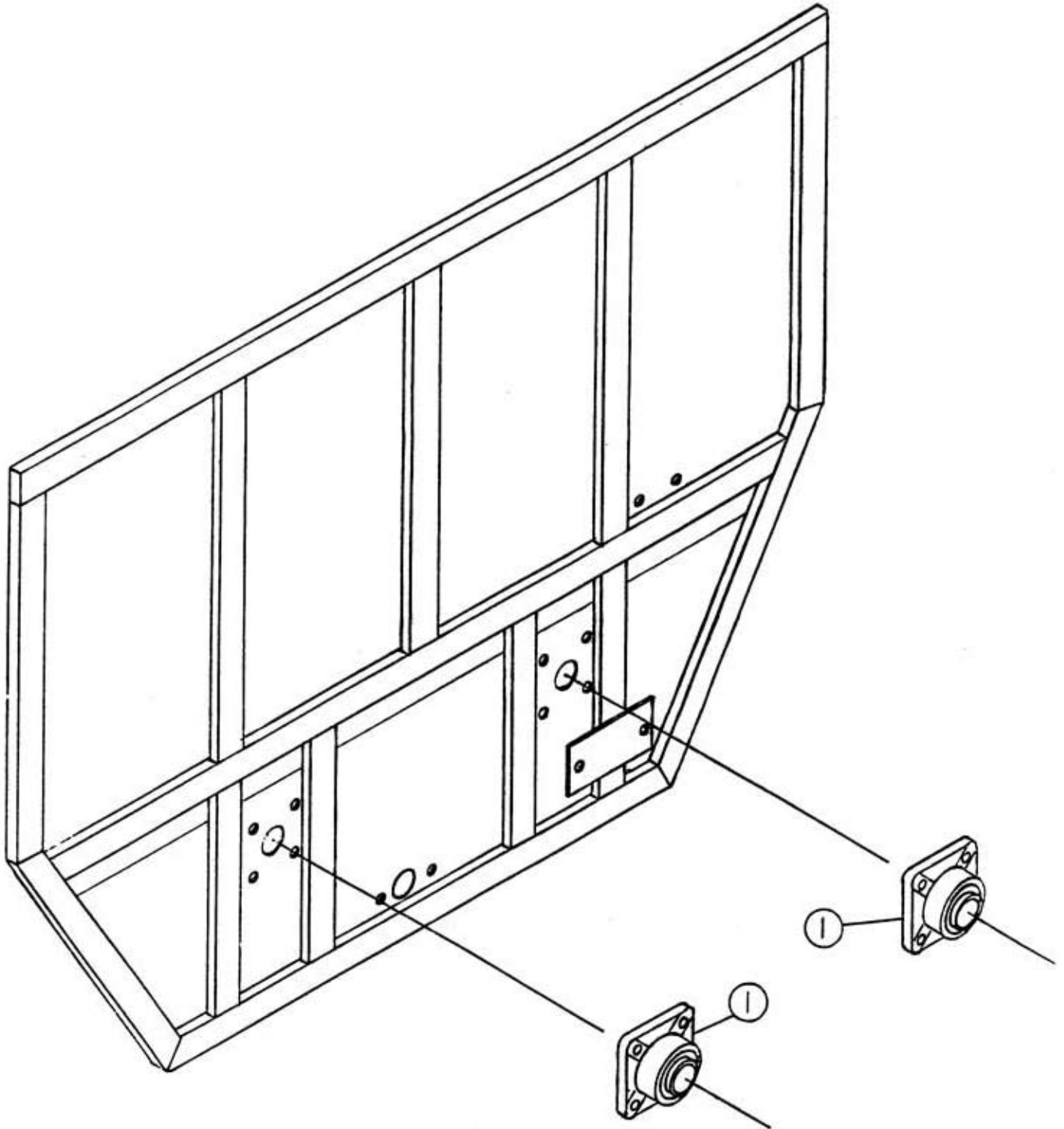
1000-16 FEEDER

ITEM #	PART #	DESCRIPTION	QTY.
1	383002	30"OD x 6 5/8"ID x 1/2" x 2/3P RH FLIGHT, NOTCHED	2
2	383003	30"OD x 6 5/8"ID x 1/2" x 2/3P LH FLIGHT, NOTCHED	9
3	874079	14' FEEDER RIGHT SIDE AUGER PIPE WA	1
4	874080	16' FEEDER LEFT SIDE AUGER PIPE WA	1
	874081	FEEDER AUGER WA, 16' RIGHT HAND, COMPLETE	1
	874082	FEEDER AUGER WA, 16' LEFT HAND, COMPLETE	1

1200-20 FEEDER

ITEM #	PART #	DESCRIPTION	QTY.
1	383002	30"OD x 6 5/8"ID x 1/2" x 2/3P RH FLIGHT, NOTCHED	2
2	383003	30"OD x 6 5/8"ID x 1/2" x 2/3P LH FLIGHT, NOTCHED	9
3	874059	20' FEEDER RIGHT AUGER PIPE WA	1
4	874060	20' FEEDER LEFT AUGER PIPE WA	1
	874061	FEEDER AUGER WA, 20' RIGHT HAND, COMPLETE	1
	874062	FEEDER AUGER WA, 20' LEFT HAND, COMPLETE	1

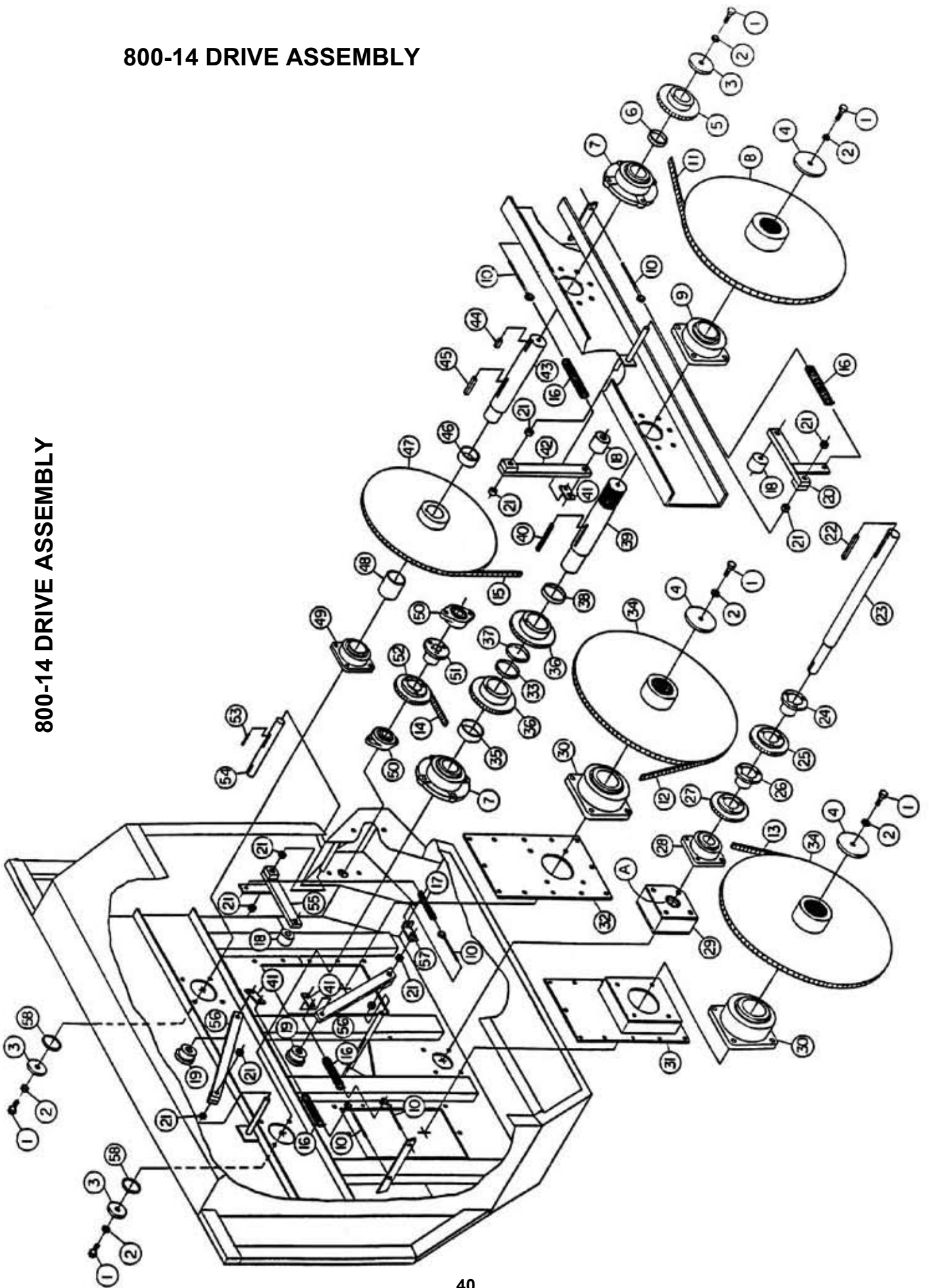
FRONT END SHEET ASSEMBLY



REF. NO.	PART NO.	DESCRIPTION	QTY.
1.	340438	RCJ 2-7/16" 4-BOLT FLANGE BEARING.....	2

800-14 DRIVE ASSEMBLY

800-14 DRIVE ASSEMBLY

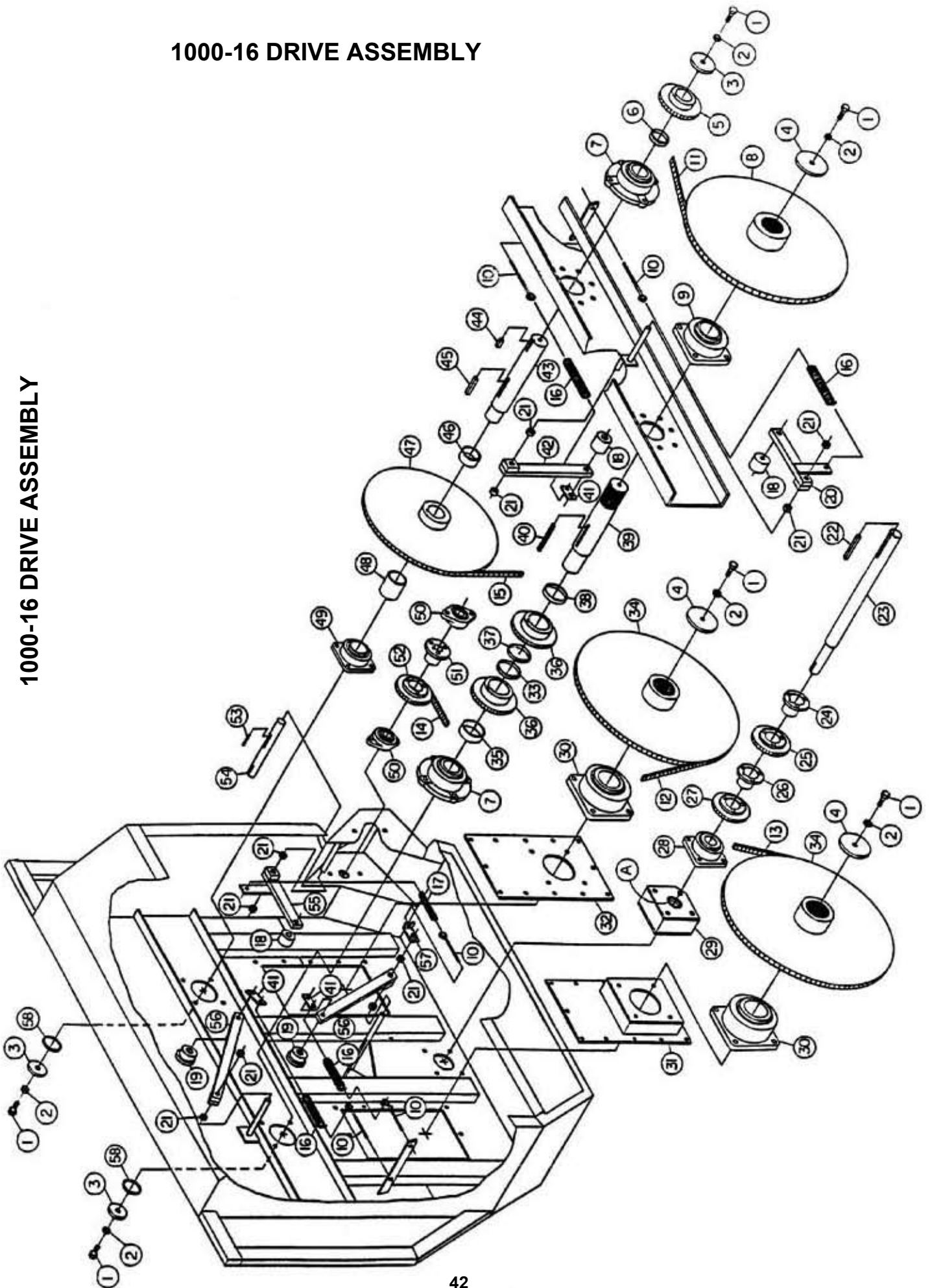


800-14 DRIVE ASSEMBLY

REF. NO.	PART NO.	DESCRIPTION	QTY.
1.	405703	1/2"-13 x 1-1/2" HHCS.....	10
2.	402008	1/2" SPLIT LOCKWASHER.....	10
3.	185259	SHAFT SPROCKET WASHER - 3-1/2"OD.....	3
4.	185261	SHAFT SPROCKET WASHER - 5-1/2"OD.....	3
5.	331001	100 B 15 x 2-7/16" BORE 2 SET SCREW SPROCKET.....	1
6.	188330	2-1/2" SHAFT SPACER x 1/2".....	1
7.	342040	2-1/2" REX ZB2208 4-BOLT FLANGE ROLL BEARING.....	1
8.	874030	100 B 60 x 3" SPLINED SPROCKET WELDMENT.....	1
9.	342048	REX ZB2300 4-BOLT FLANGE ROLL BEARING.....	2
10.	410852	3/8" x 8" x 3/4" x 4" EYEBOLT.....	5
11.	321097	#100 RC x 97 PITCHES COMP.....	1
12.	321211	#120 RC x 101 PITCHES COMP.....	1
13.	321280	#120 RC x 80 PITCHES COMP.....	1
14.	320884	#80 RC x 84 PITCHES COMP.....	1
15.	320836	#80 RC x 136 PITCHES COMP.....	1
16.	410012	1-3/4" x 7" x .218" PULL SPRING.....	3
17.	410008	1-1/4" x 5-1/4" x .188" PULL SPRING.....	2
18.	185582	#100 IDLER BLOCK UHMW 2-7/8" x 5/8".....	3
19.	185621	#120/140 IDLER BLOCK UHMW 2-7/8" x 5/8".....	2
20.	781166	FEEDER IDLER ARM ASSEMBLY.....	1
21.	412416	1" SET COLLAR PLTD.....	9
22.	185289	5/8" SQ. KEY x 2-3/4" LONG.....	1
23.	188211	FEEDER INPUT SHAFT x 47-3/4".....	1
24.	336040	SK 2-7/16" QD BUSHING WITH KEY.....	1
25.	330815	80 SK 15H RC SPROCKET.....	1
28.	340438	RCJ 2-7/16" 4-BOLT FLANGE BEARING.....	1
29.	781037	600/700 INPUT BEARING MOUNT & SEAL ASSEMBLY.....	1
A.	355039	2-7/16" SEAL CR 24287.....	2
30.	342056	REX ZB2308 4-BOLT FLANGE ROLL BEARING.....	2
31.	874028	FEEDER 3-1/2" BEARING PLATE WELDMENT.....	1
32.	188136	FEEDER 3-1/2" BEARING PLATE 15" x 24-1/2".....	1
33.	185318	3-1/2" SHAFT SPACER x 1/2".....	1
34.	874031	120 B 60 x 3-1/2" SPLINE SPROCKET WELDMENT.....	2
35.	188147	3" SHAFT SPACER x 3/4".....	1
36.	331215	120 B 15 x 3" BORE x 3/4" KEY & SS SPROCKET.....	2
37.	185034	3-1/2" SHAFT SPACER x 1/8".....	1
38.	188148	3" SHAFT SPACER x 1-1/2".....	1
39.	188094	FEEDER LEFT JACKSHAFT x 19".....	1
40.	188150	3/4" SQ. KEY x 5-1/4".....	1
41.	187157	5/8" PULL TAB 1/4" x 1-1/2" x 3".....	1
42.	781165	FEEDER INPUT CHAIN IDLER ASSEMBLY.....	1
43.	188093	FEEDER RIGHT JACKSHAFT x 18".....	1
44.	189104	5/8" SQ. KEY x 1-3/4" LONG.....	1
45.	188149	5/8" SQ. KEY x 3-1/4".....	1
46.	188146	2-1/2" PIPE SPACER x 1-1/4".....	1
47.	874032	80 C 70 x 2-1/2" BORE SPROCKET WELDMENT.....	1
48.	188145	2-1/2" SHAFT SPACER x 3-3/4".....	1
50.	340224	VCJT 1-1/2" 2-BOLT FLANGE BEARING.....	2
51.	336025	SF 1-1/2" QD BUSHING WITH KEY.....	1
52.	330821	80 SF 21H RC SPROCKET.....	1
53.	185480	3/8" SQ. KEY x 2" LONG.....	1
54.	188210	CROSS AUGER OIL BATH DRIVESHAFT x 12-3/4".....	1
55.	781199	FEEDER DRIVE BOX IDLER ASSEMBLY.....	1
56.	781164	FEEDER INPUT CHAIN IDLER ASSEMBLY.....	2
57.	874049	IDLER PULL BRACKET WELDMENT.....	1
58.	185033	SPROCKET SPACER 3" x 1/8".....	2

1000-16 DRIVE ASSEMBLY

1000-16 DRIVE ASSEMBLY

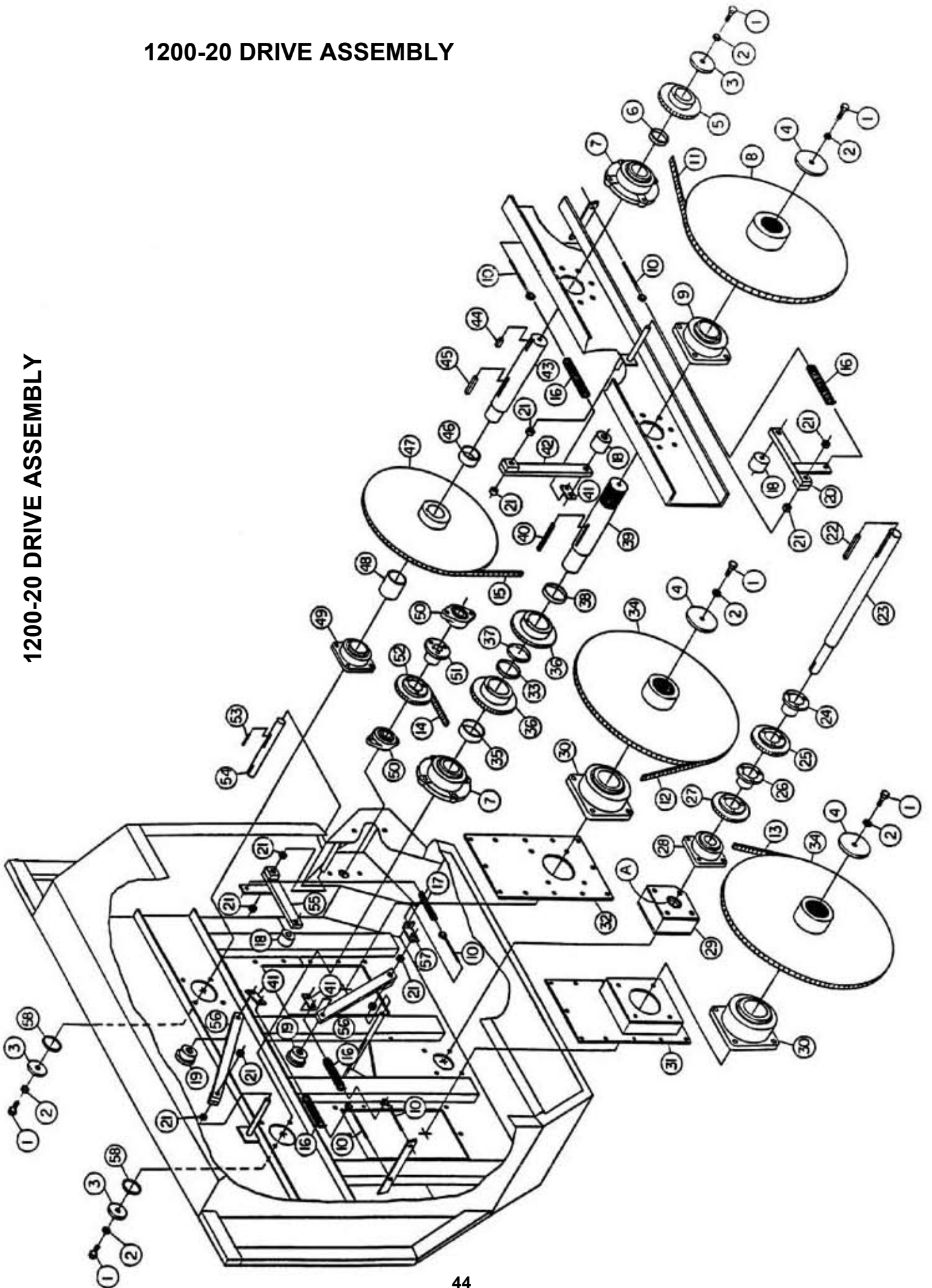


1000-16 DRIVE ASSEMBLY

REF. NO.	PART NO.	DESCRIPTION	QTY.
1.	405703	1/2"-13 x 1-1/2" HHCS.....	10
2.	402008	1/2" SPLIT LOCKWASHER.....	10
3.	185259	SHAFT SPROCKET WASHER - 3-1/2"OD.....	3
4.	185261	SHAFT SPROCKET WASHER - 5-1/2"OD.....	3
5.	331001	100 B 15 x 2-7/16" BORE 2 SET SCREW SPROCKET.....	1
6.	188330	2-1/2" SHAFT SPACER x 1/2".....	1
7.	342040	2-1/2" REX ZB2208 4-BOLT FLANGE ROLL BEARING.....	1
8.	874030	100 B 60 x 3" SPLINED SPROCKET WELDMENT.....	1
9.	342048	REX ZB2300 4-BOLT FLANGE ROLL BEARING.....	2
10.	410852	3/8" x 8" x 3/4" x 4" EYEBOLT.....	5
11.	321097	#100 RC x 97 PITCHES COMP.....	1
12.	321211	#120 RC x 101 PITCHES COMP.....	1
13.	321280	#120 RC x 80 PITCHES COMP.....	1
14.	320884	#80 RC x 84 PITCHES COMP.....	1
15.	320836	#80 RC x 136 PITCHES COMP.....	1
16.	410012	1-3/4" x 7" x .218" PULL SPRING.....	3
17.	410008	1-1/4" x 5-1/4" x .188" PULL SPRING.....	2
18.	185582	#100 IDLER BLOCK UHMW 2-7/8" x 5/8".....	3
19.	185621	#120/140 IDLER BLOCK UHMW 2-7/8" x 5/8".....	2
20.	781166	FEEDER IDLER ARM ASSEMBLY.....	1
21.	412416	1" SET COLLAR PLTD.....	9
22.	185289	5/8" SQ. KEY x 2-3/4" LONG.....	1
23.	188211	FEEDER INPUT SHAFT x 47-3/4".....	1
24.	336040	SK 2-7/16" QD BUSHING WITH KEY.....	1
25.	330815	80 SK 15H RC SPROCKET.....	1
28.	340438	RCJ 2-7/16" 4-BOLT FLANGE BEARING.....	1
29.	781037	600/700 INPUT BEARING MOUNT & SEAL ASSEMBLY.....	1
A.	355039	2-7/16" SEAL CR 24287.....	2
30.	342056	REX ZB2308 4-BOLT FLANGE ROLL BEARING.....	2
31.	874028	FEEDER 3-1/2" BEARING PLATE WELDMENT.....	1
32.	188136	FEEDER 3-1/2" BEARING PLATE 15" x 24-1/2".....	1
33.	185318	3-1/2" SHAFT SPACER x 1/2".....	1
34.	874031	120 B 60 x 3-1/2" SPLINE SPROCKET WELDMENT.....	2
35.	188147	3" SHAFT SPACER x 3/4".....	1
36.	331215	120 B 15 x 3" BORE x 3/4" KEY & SS SPROCKET.....	2
37.	185034	3-1/2" SHAFT SPACER x 1/8".....	1
38.	188148	3" SHAFT SPACER x 1-1/2".....	1
39.	188094	FEEDER LEFT JACKSHAFT x 19".....	1
40.	188150	3/4" SQ. KEY x 5-1/4".....	1
41.	187157	5/8" PULL TAB 1/4" x 1-1/2" x 3".....	1
42.	781165	FEEDER INPUT CHAIN IDLER ASSEMBLY.....	1
43.	188093	FEEDER RIGHT JACKSHAFT x 18".....	1
44.	189104	5/8" SQ. KEY x 1-3/4" LONG.....	1
45.	188149	5/8" SQ. KEY x 3-1/4".....	1
46.	188146	2-1/2" PIPE SPACER x 1-1/4".....	1
47.	874032	80 C 70 x 2-1/2" BORE SPROCKET WELDMENT.....	1
48.	188145	2-1/2" SHAFT SPACER x 3-3/4".....	1
50.	340224	VCJT 1-1/2" 2-BOLT FLANGE BEARING.....	2
51.	336025	SF 1-1/2" QD BUSHING WITH KEY.....	1
52.	330821	80 SF 21H RC SPROCKET.....	1
53.	185480	3/8" SQ. KEY x 2" LONG.....	1
54.	188210	CROSS AUGER OIL BATH DRIVESHAFT x 12-3/4".....	1
55.	781199	FEEDER DRIVE BOX IDLER ASSEMBLY.....	1
56.	781164	FEEDER INPUT CHAIN IDLER ASSEMBLY.....	2
57.	874049	IDLER PULL BRACKET WELDMENT.....	1
58.	185033	SPROCKET SPACER 3" x 1/8".....	2

1200-20 DRIVE ASSEMBLY

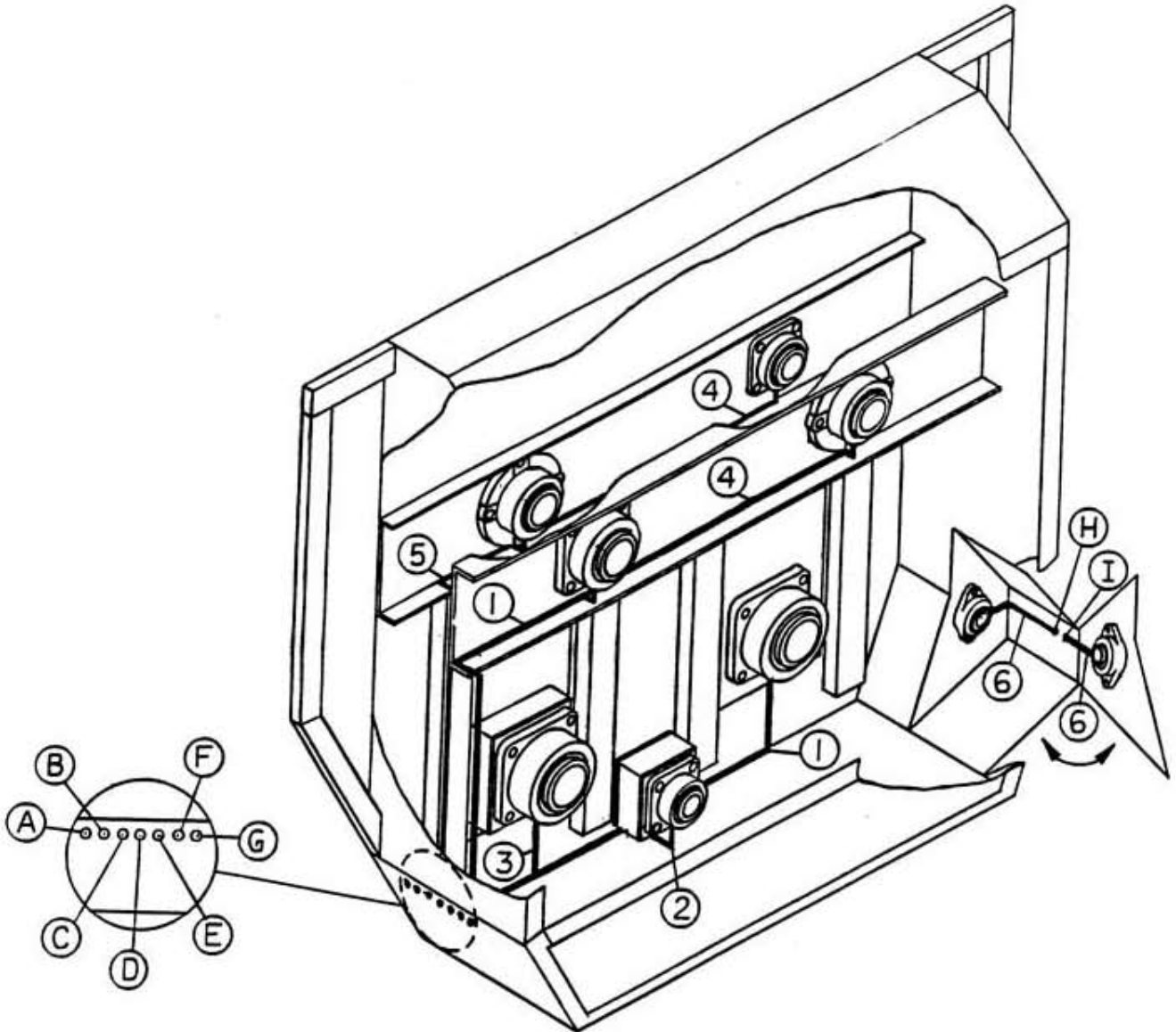
1200-20 DRIVE ASSEMBLY



1200-20 DRIVE ASSEMBLY

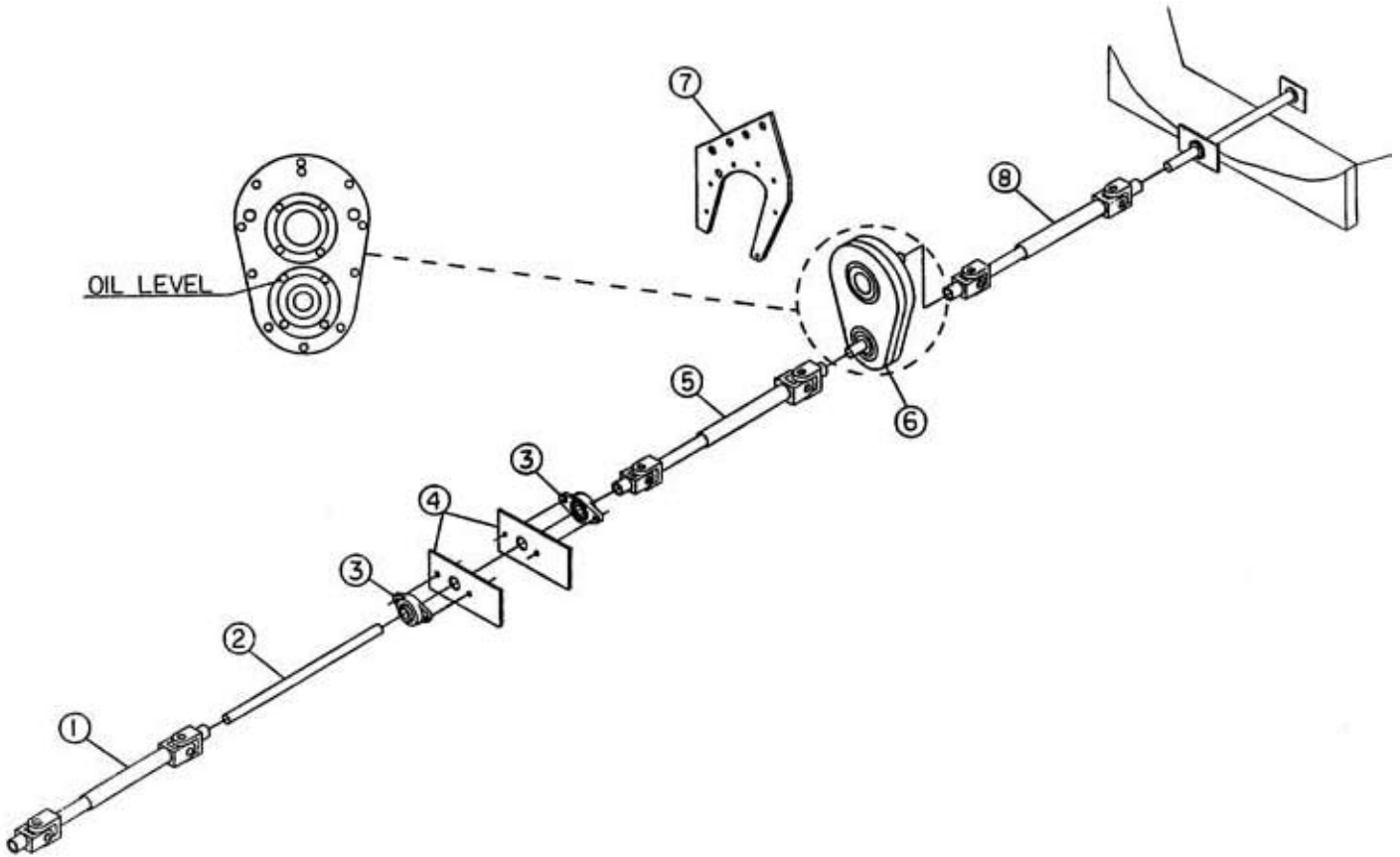
REF. NO.	PART NO.	DESCRIPTION	QTY.
1.	405703	1/2"-13 x 1-1/2" HHCS.....	10
2.	402008	1/2" SPLIT LOCKWASHER.....	10
3.	185259	SHAFT SPROCKET WASHER - 3-1/2"OD.....	3
4.	185261	SHAFT SPROCKET WASHER - 5-1/2"OD.....	3
5.	331215	120 B 15 x 3" BORE 3/4" KEY & SET SCREW.....	1
6.	188315	3" SHAFT SPACER x 1/2".....	1
7.	342048	REX ZB2300 4-BOLT FLANGE ROLL BEARING.....	2
8.	874031	120 B 60 x 3-1/2" SPLINED SPROCKET WELDMENT.....	1
9.	342056	REX ZB2308 4-BOLT FLANGE ROLL BEARING.....	1
10.	410852	3/8" x 8" x 3/4" x 4" EYEBOLT.....	5
11.	321287	#120 RC x 87 PITCHES COMP.....	1
12.	321489	#140 RC x 89 PITCHES COMP.....	1
13.	321471	#140 RC x 71 PITCHES COMP.....	1
14.	320884	#80 RC x 84 PITCHES COMP.....	1
15.	321113	#100 RC x 113 PITCHES COMP.....	1
16.	410012	1-3/4" x 7" x .218" PULL SPRING.....	4
17.	410008	1-1/4" x 5-1/4" x .188" PULL SPRING.....	1
18.	185582	#100 IDLER BLOCK UHMW 2-7/8" x 5/8".....	3
19.	185621	#120/140 IDLER BLOCK UHMW 2-7/8" x 5/8".....	2
20.	781166	FEEDER IDLER ARM ASSEMBLY.....	1
21.	412416	1" SET COLLAR PLTD.....	9
22.	188332	3/4" SQ. KEY x 2-1/4" LONG.....	1
23.	188211	FEEDER INPUT SHAFT x 47-3/4".....	1
24.	336040	SK 2-7/16" QD BUSHING WITH KEY.....	1
25.	330815	80 SK 15H RC SPROCKET.....	1
26.	340439	SF 2-7/16" QD BUSHING WITH KEY.....	1
27.	331015	100 SF 15H RC SPROCKET.....	1
28.	340438	RCJ 2-7/16" 4-BOLT FLANGE BEARING.....	1
29.	781037	600/700 INPUT BEARING MOUNT & SEAL ASSEMBLY.....	1
A.	355039	2-7/16" SEAL CR 24287.....	2
30.	342064	REX ZB2400 4-BOLT FLANGE ROLL BEARING.....	2
31.	874056	FEEDER 4" BEARING PLATE WELDMENT.....	1
32.	188236	FEEDER 4" BEARING PLATE 15" x 24-1/2".....	1
34.	874055	140 B 54 x 4" SPLINE SPROCKET WELDMENT.....	2
35.	188254	3-1/2" SHAFT SPACER x 1-9/16".....	1
36.	331403	140 B 13 x 3-1/2" BORE x 7/8" KEY & SS SPROCKET.....	2
37.	188256	4" SHAFT SPACER x 5/8".....	1
38.	188255	3-1/2" SHAFT SPACER x 13/16".....	1
39.	188233	20 FT. FEEDER LEFT JACKSHAFT x 20-1/4".....	1
40.	188234	7/8" SQ. KEY x 5-1/4".....	1
41.	187157	5/8" PULL TAB 1/4" x 1-1/2" x 3".....	3
42.	781165	FEEDER INPUT CHAIN IDLER ASSEMBLY.....	1
43.	188232	20 FT. FEEDER RIGHT JACKSHAFT x 18-3/4".....	1
44.	188332	3/4" SQ. KEY x 2-1/4" LONG.....	1
45.	189044	3/4" SQ. KEY x 4" LONG.....	1
46.	188345	3" PIPE SPACER x 1".....	1
47.	874054	100 C 60 x 3" BORE SPROCKET WELDMENT.....	1
48.	188253	3" SHAFT SPACER x 4-1/8".....	1
49.	340439	RCJC 2-7/16" 4-BOLT FLANGE BEARING.....	1
50.	340224	VCJT 1-1/2" 2-BOLT FLANGE BEARING.....	2
51.	336025	SF 1-1/2" QD BUSHING WITH KEY.....	1
52.	330821	80 SF 21H RC SPROCKET.....	1
53.	185480	3/8" SQ. KEY x 2" LONG.....	1
54.	188210	CROSS AUGER OIL BATH DRIVESHAFT x 12-3/4".....	1
55.	781199	FEEDER DRIVE BOX IDLER ASSEMBLY.....	1
56.	781164	FEEDER INPUT CHAIN IDLER ASSEMBLY.....	2
57.	874049	IDLER PULL BRACKET WELDMENT.....	1
58.	185033	SPROCKET SPACER 3" x 1/8".....	2

LUBRICATION ASSEMBLY



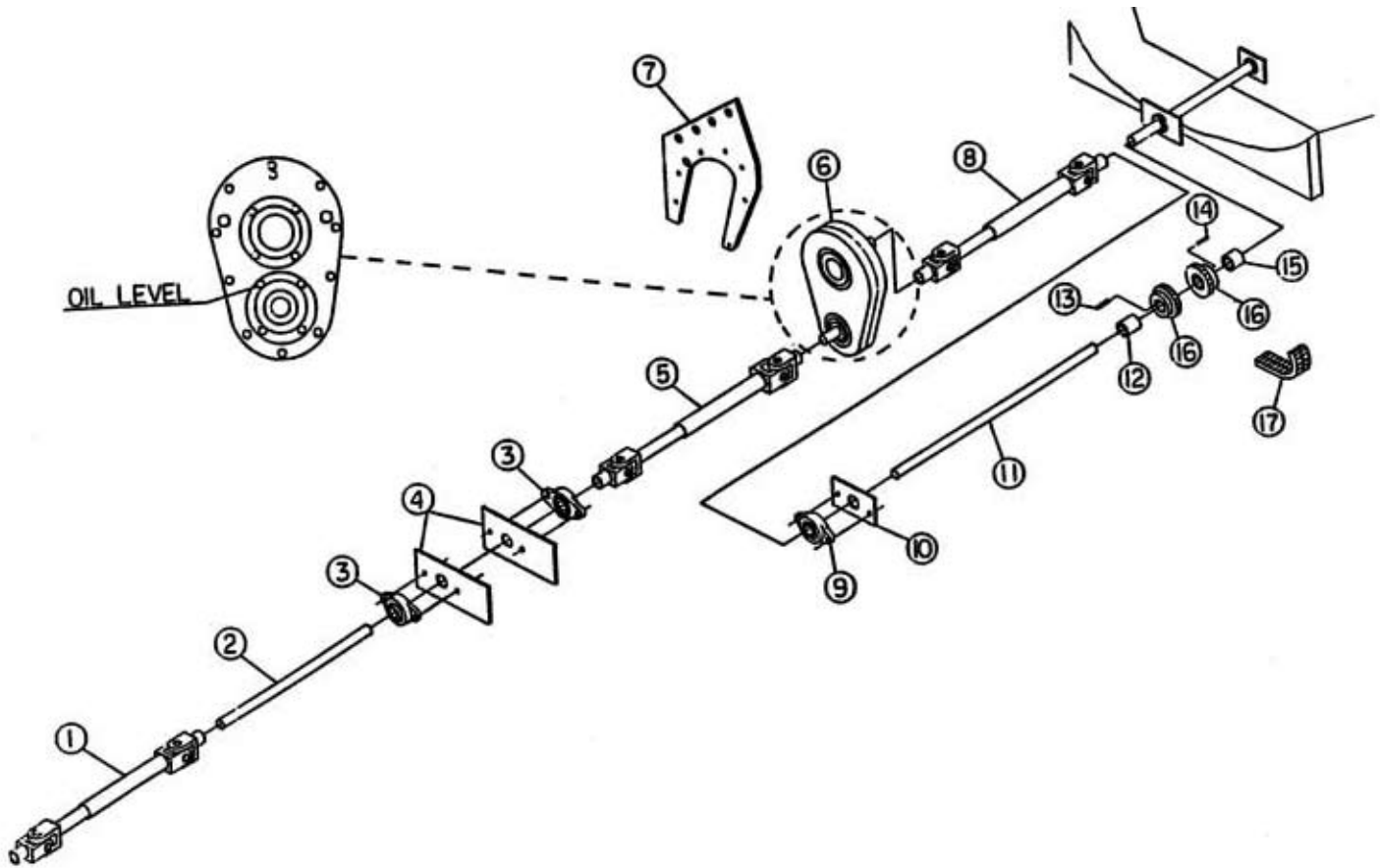
REF. NO.	PART NO.	DESCRIPTION	QTY.
1.	185547	GREASE LINE - 60".....	2
A.		RIGHT AUGER	
F.		LEFT FRONT JACKSHAFT	
2.	185341	GREASE LINE - 48".....	1
B.		INPUT BEARING	
3.	185045	GREASE LINE - 36".....	1
C.		LEFT AUGER	
4.	185340	GREASE LINE - 84".....	2
D.		RIGHT REAR JACKSHAFT	
G.		RIGHT FRONT JACKSHAFT	
5.	185043	GREASE LINE - 74".....	1
E.		LEFT REAR JACKSHAFT	
6.	185546	GREASE LINE - 14".....	2
H.		CROSS AUGER DRIVESHAFT BEARING	
I.		CROSS AUGER DRIVESHAFT BEARING	

800 FEEDER DRIVELINE ASSEMBLY



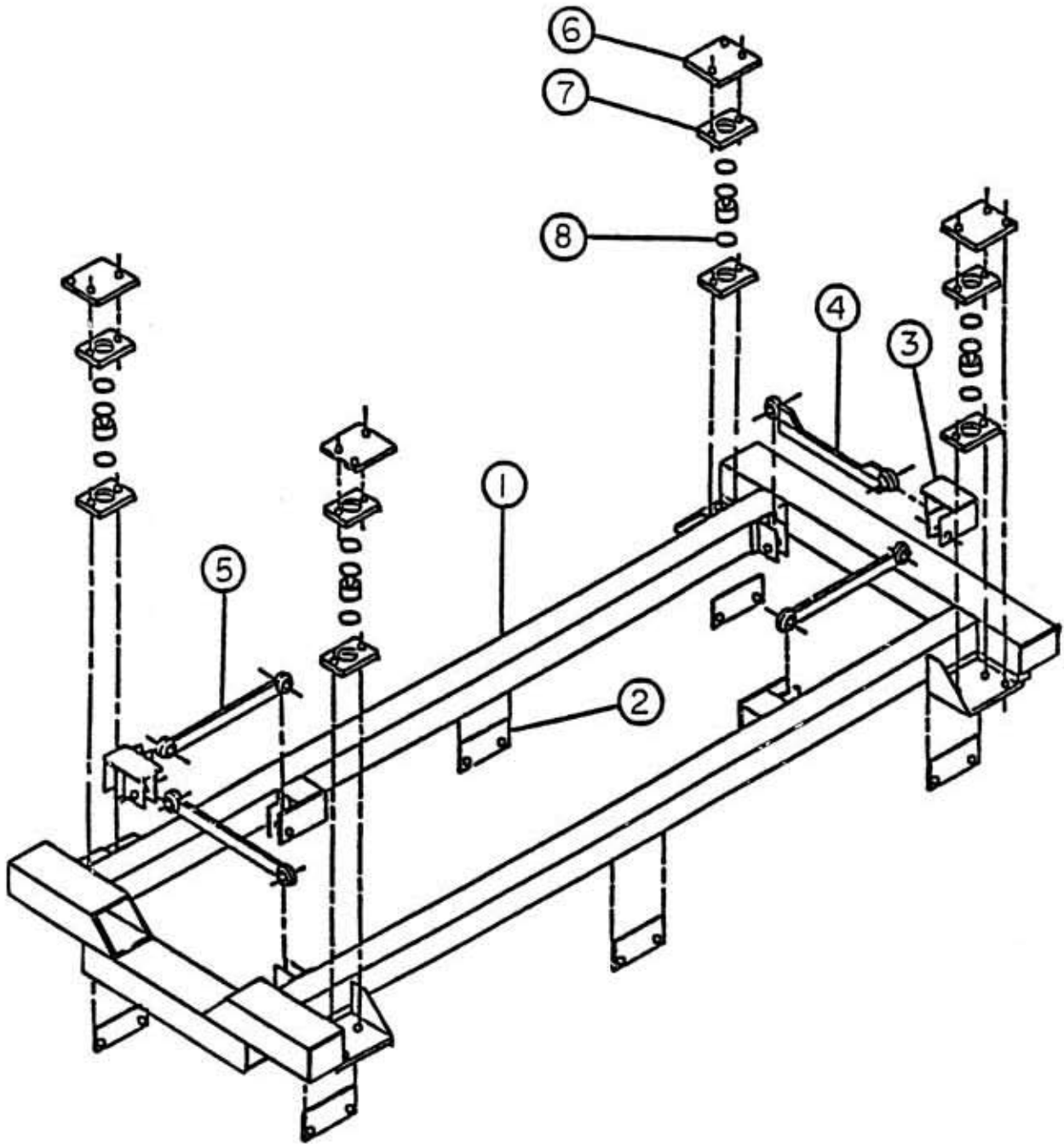
REF. NO.	PART NO.	DESCRIPTION	QTY.
1.	780486	DRIVESHAFT - 1280.....	1
2.	183327	1-3/8" x 32" SHAFT.....	1
3.	340222	1-3/8" 2-BOLT FLANGE BEARING.....	2
4.	183319	JACKSHAFT BRACKET.....	2
5.	789494	DRIVESHAFT ASSEMBLY - 1280.....	1
6.	344025	3:1 GEARBOX WITH PUMP MOUNT.....	1
7.	188162	GEARBOX MOUNT PLATE.....	1
8.	338048	W2500 DRIVESHAFT.....	1

1000 & 1200 FEEDER DRIVELINE ASSEMBLY



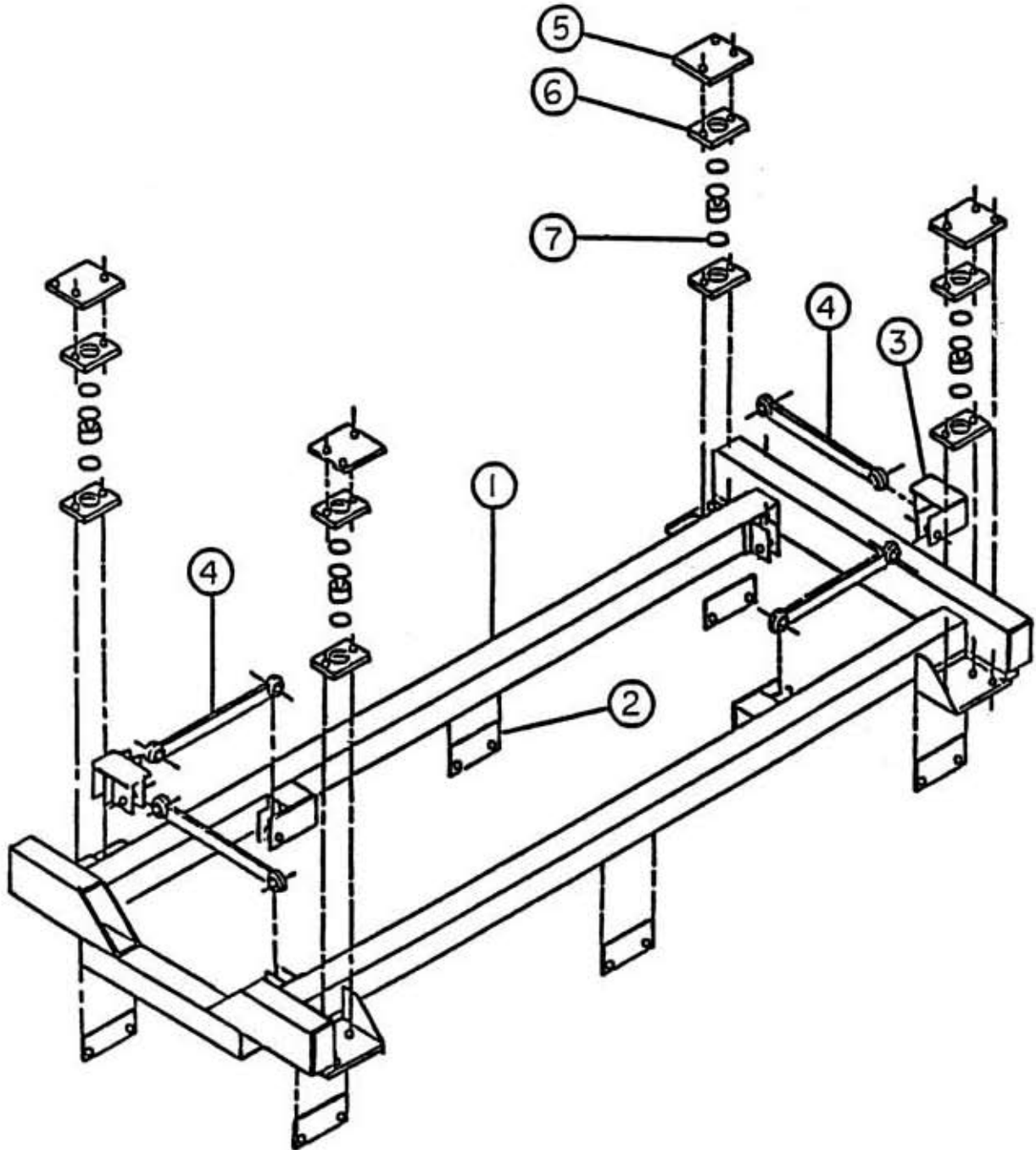
REF. NO.	PART NO.	DESCRIPTION	QTY.
1a.	780448	DRIVESHAFT - 1350 (1200-20).....	1
1b.	780486	DRIVESHAFT - 1280 (1000-16).....	1
2a.	185504	1-3/8" x 48" SHAFT (1200-20).....	1
2b.	183327	1-3/8" x 32" SHAFT (1000-16).....	1
3.	340222	1-3/8" 2-BOLT FLANGE BEARING.....	2
4.	183319	JACKSHAFT BRACKET.....	2
5a.	789496	DRIVESHAFT ASSEMBLY - 1350 (1200-20).....	1
5b.	780494	DRIVESHAFT ASSEMBLY - 1280 (1000-16).....	1
6.	334025	3:1 GEARBOX WITH PUMP MOUNT.....	1
7.	188162	GEARBOX MOUNT PLATE.....	1
8.	338048	W2500 DRIVESHAFT.....	1
9.	340232	VCJT 2" 2-BOLT FLANGE BEARING.....	1
10.	188265	BEARING HANGER.....	1
11.	188267	2" x 48" DRIVELINE.....	1
12.	336027	SF 1-3/4" QD BUSHING.....	1
13.	185480	3/8" SQ. KEY x 2".....	1
14.	185485	1/2" SQ. KEY x 2-1/2".....	1
15.	336032	SF x 2" QD BUSHING.....	1
16.	362620	#80-18 SF CHAIN COUPLING SPROCKET.....	2
17.	320818	#80-2 RC x 18 PITCH COMP.....	1

800-14 SCALE FRAME ASSEMBLY



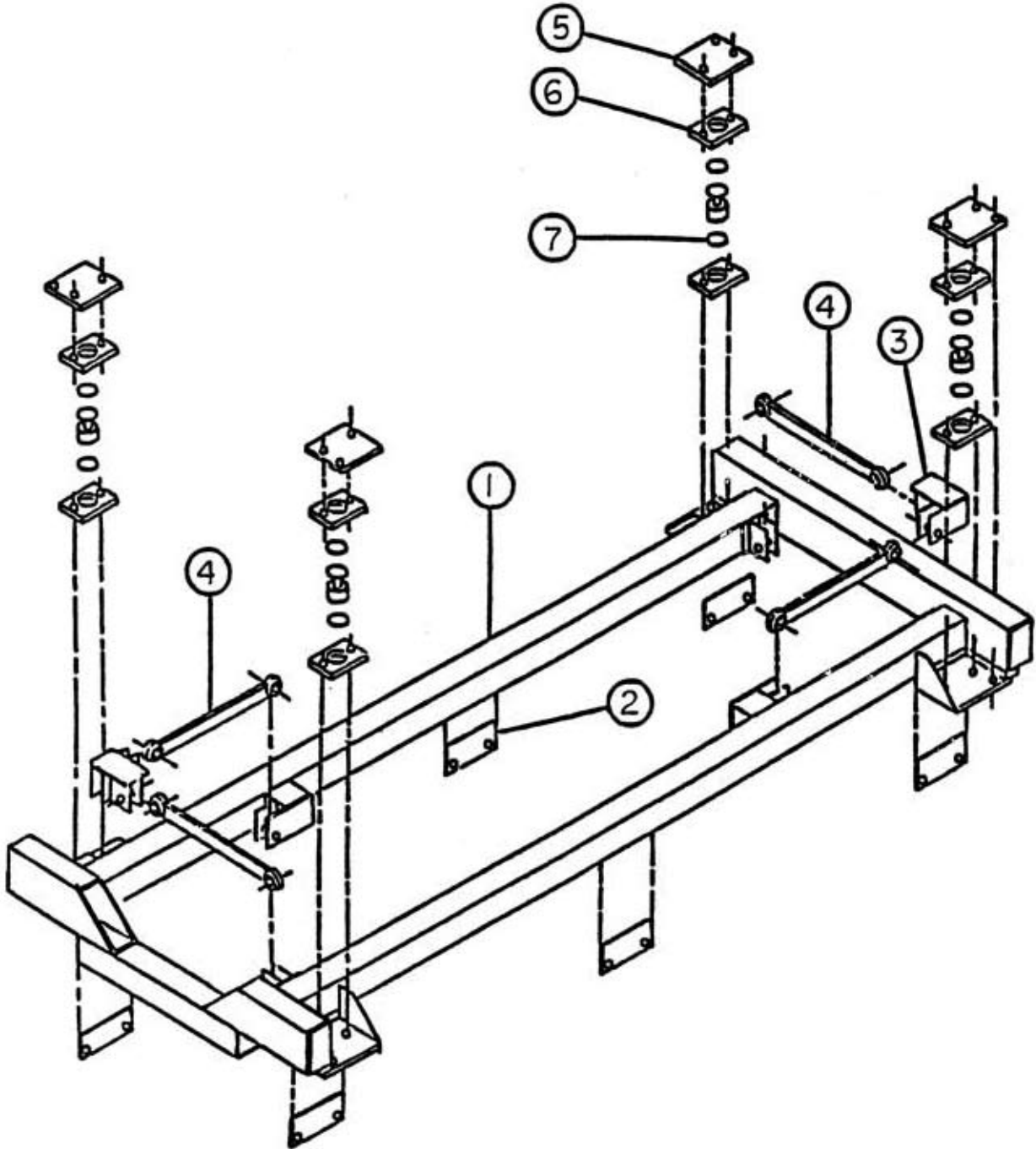
REF. NO.	PART NO.	DESCRIPTION	QTY.
1.	874037	800-14 SCALE FRAME WELDMENT.....	1
2.	182998	TRUCK FRAME BRACKET.....	6
3.	870519	MIXER CHECK WELDMENT.....	2
4.	872053	OFFSET CHECK ROD WELDMENT.....	1
5.	870501	CHECK ROD WELDMENT.....	3
6.	182881	SCALE MOUNT MIXER PLATE.....	4
7.	182915	LOADCELL CAGE PLATE.....	8
8.	185997	SCALE PAD.....	8

1000-16 SCALE FRAME ASSEMBLY



REF. NO.	PART NO.	DESCRIPTION	QTY.
1.	874084	1000-16 SCALE FRAME WELDMENT.....	1
2.	182998	TRUCK FRAME BRACKET.....	6
3.	870519	MIXER CHECK WELDMENT.....	2
4.	874066	FEEDER SCALE CHECK ROD WELDMENT.....	4
5.	182881	SCALE MOUNT MIXER PLATE.....	4
6.	182915	LOADCELL CAGE PLATE.....	8
7.	185997	SCALE PAD	8

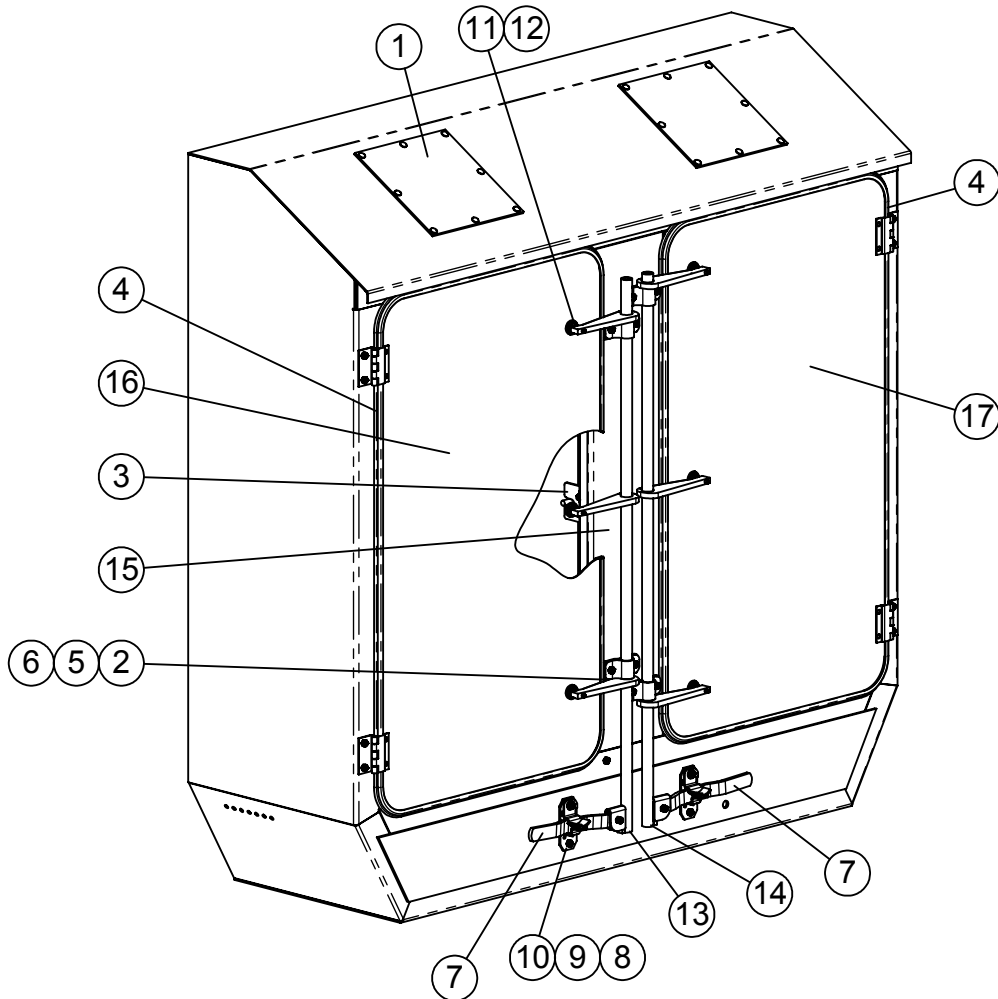
1200-20 SCALE FRAME ASSEMBLY



REF. NO.	PART NO.	DESCRIPTION	QTY.
1.	874065	1200-20 SCALE FRAME WELDMENT.....	1
2.	182998	TRUCK FRAME BRACKET.....	6
3.	870519	MIXER CHECK WELDMENT.....	2
4.	874066	FEEDER SCALE CHECK ROD WELDMENT.....	4
5.	182881	SCALE MOUNT MIXER PLATE.....	4
6.	182915	LOADCELL CAGE PLATE.....	8
7.	185997	SCALE PAD.....	8

FEEDER, DOUBLE OIL BATH DOOR ASSEMBLY

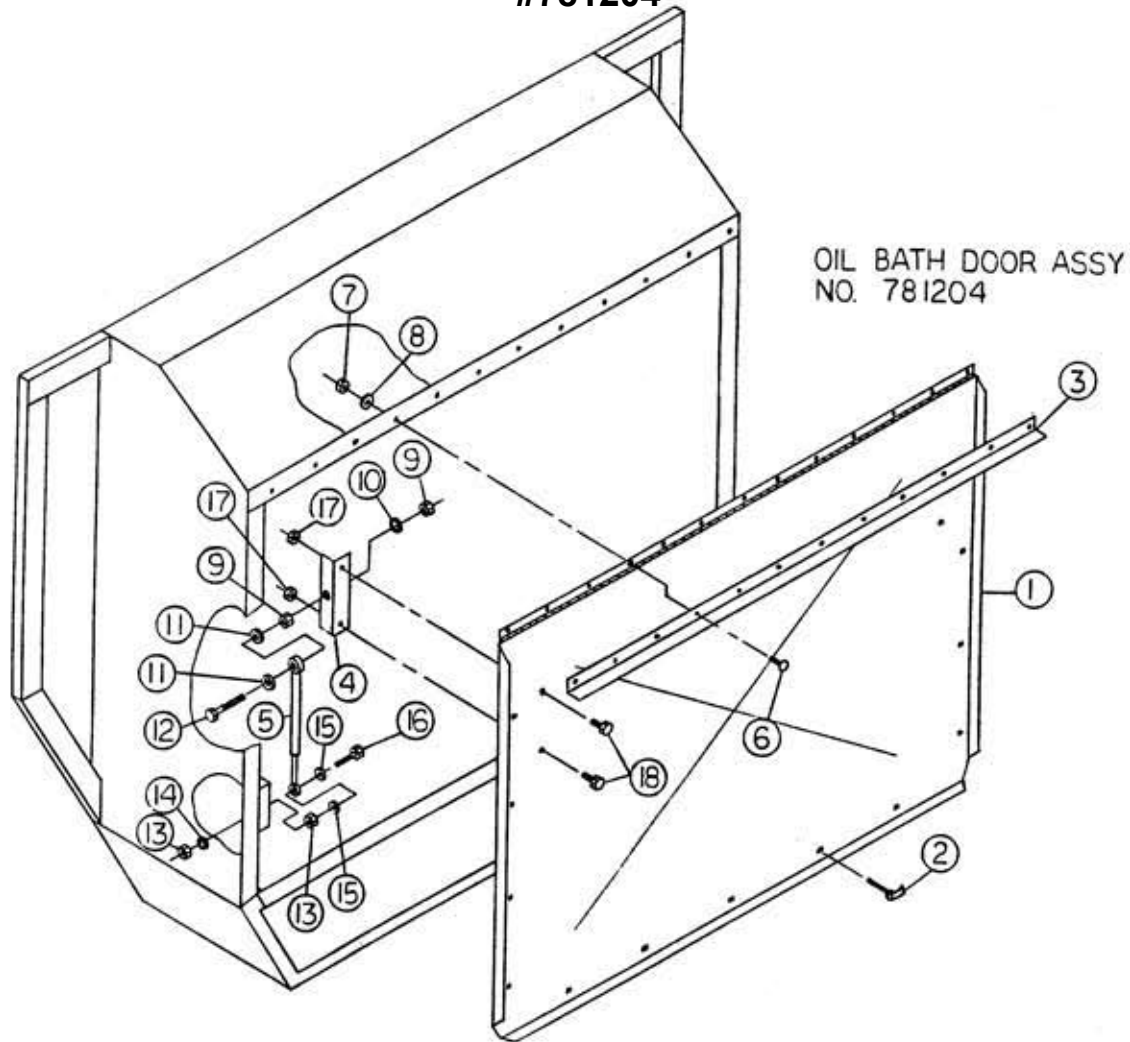
#685038



ITEM #	PART #	DESCRIPTION	QTY.
1	185219	OIL BATH TOP DOOR 12" x 12"	2
2	189503	CAM ROD SPACER	4
3	190713	OB DOOR SUPPORT PLATE - WIDE	2
4	351056	.Seal, 5/32 Rubber Bulb O.B.	2
5	370316	CAM LOCK TOP PLATE	4
6	370317	CAM LOCK BOTTOM PLATE	4
7	370319	CAM LOCK HANDLE	2
8	370320	HANDLES CAM LOCK	2
9	370321	CAM LOCK BUSHING	2
10	370322	HANDLE STOP	2
11	370323	LEVELING PAD	6
12	400205	HEX NUT 5/16"-18 #5 PLTD	4
13	874166	FEEDER LH CAM LOCK WA	1
14	874167	FEEDER RH CAM LOCK WA	1
15	874168	O.B. CENTER CHANNEL W/A	1
16	874169	O.B. DOOR W/A	1
17	874210	OB DOOR W/A RH SIDE	1

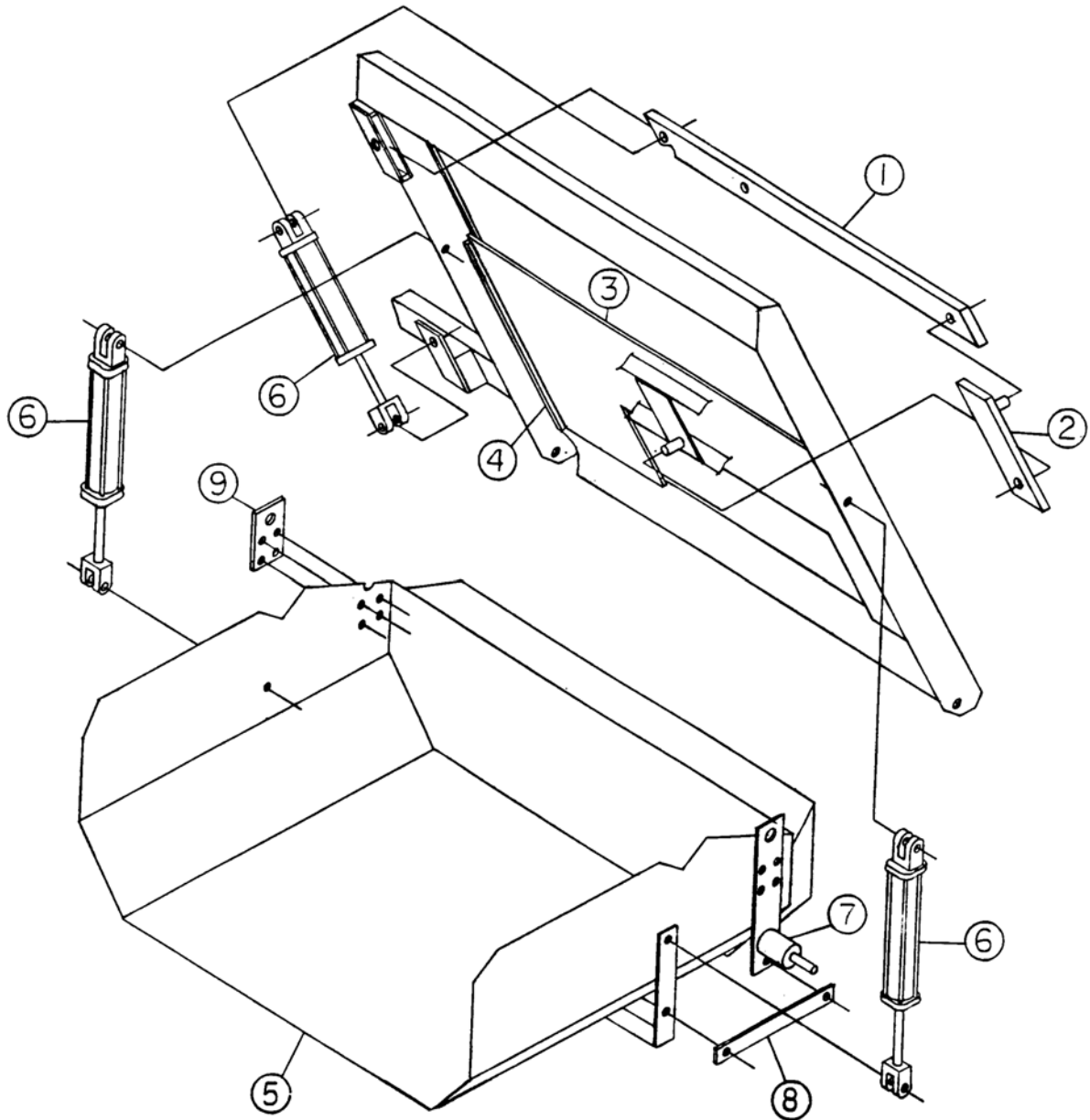
FEEDER, SINGLE OIL BATH DOOR ASSEMBLY

#781204



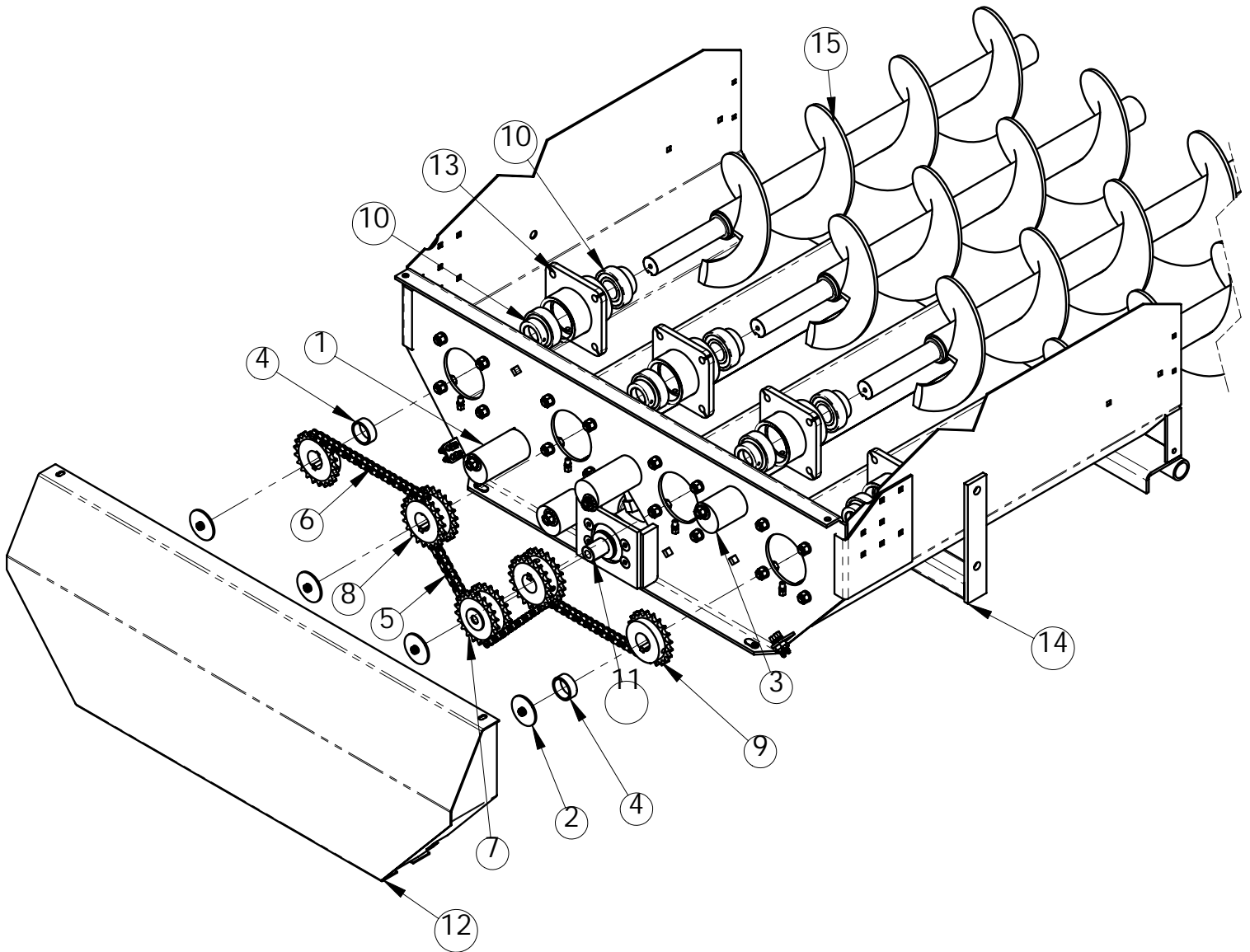
REF. NO.	PART NO.	DESCRIPTION	QTY.
1.	874105	FEEDER OIL BATH & HINGE WELDMENT.....	1
2.	410300	SOUTHCO LATCH.....	13
3.	188275	RAIN LIP ANGLE.....	1
4.	185905	OIL BATH DOOR BRACKET.....	2
5.	364210	GAS CYLINDER.....	2
6.	407021	5/16" x 1" CARRIAGE BOLT.....	12
7.	402005	5/16" HEX NUT.....	12
8.	400205	5/16" LOCKWASHER.....	12
9.	400208	1/2" HEX NUT.....	4
10.	402108	1/2" STAR LOCKWASHER.....	2
11.	402508	1/2" FLAT WASHER.....	4
12.	405705	1/2" x 2" HHCS.....	2
13.	400206	3/8" HEX NUT.....	4
14.	402106	3/8" STAR LOCKWASHER.....	2
15.	402506	3/8" FLAT WASHER.....	4
16.	405655	3/8" x 1-1/2" HHCS.....	2
17.	401105	5/16" NYLOCK HEX NUT.....	4
18.	405627	5/16" x 1-1/2" HHCS.....	4

FEEDER DISCHARGE ASSEMBLY



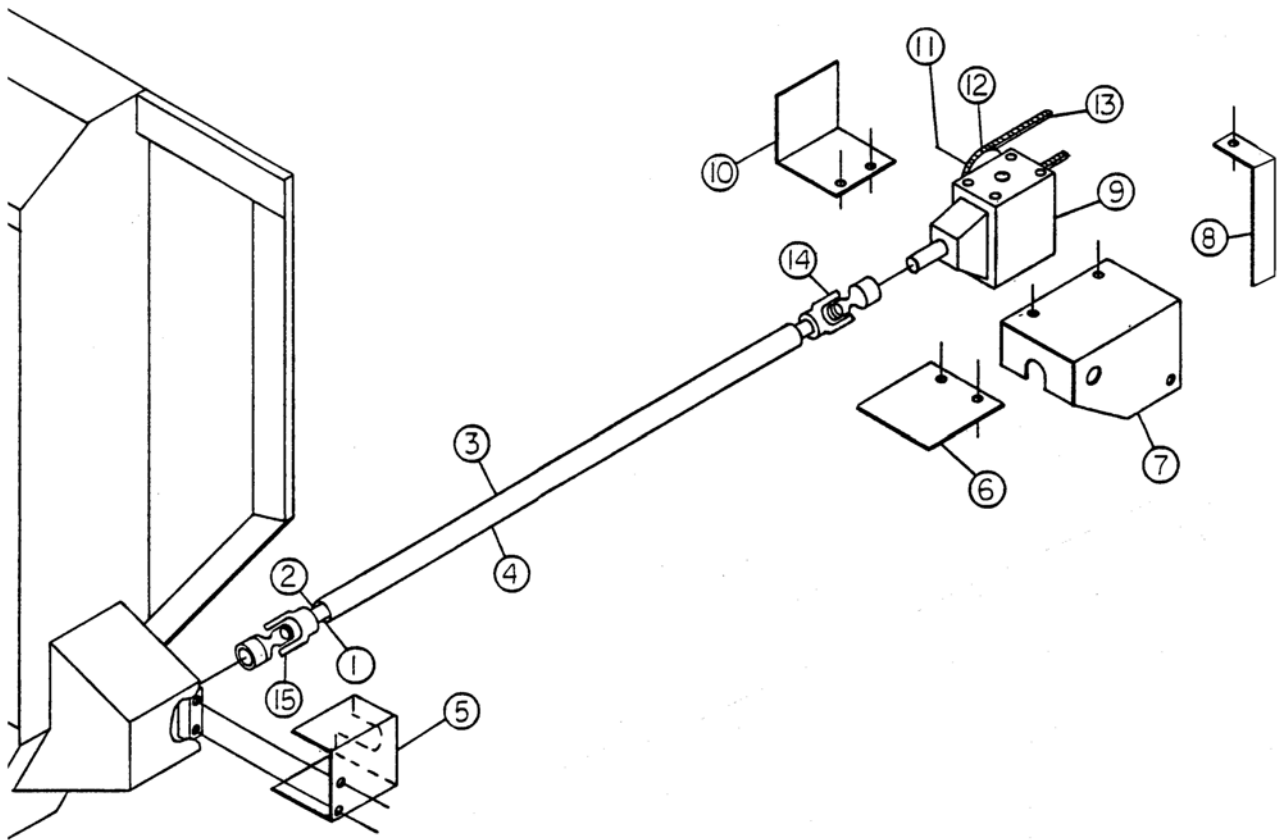
REF. NO	PART NO.	DESCRIPTION	QTY.
1	188152	FEEDER DOOR LEVER ARM	1
2	874036	DISCHARGE DOOR SHORT ARM WELDMENT	1
3	874035	FEEDER DISCHARGE DOOR WELDMENT	1
4	188163	FEEDER DOOR GUIDE	2
5	781477	FEEDER DISCHARGE CONVEYOR KIT.....	1
6	780109	STRAIGHT DOOR & CONVEYOR CYL ASSY, 2 x 8.....	2
7	874051	CONVEYOR SPOIUT CYLINDER BAR WA	1
8	188221	SPOUT CYLINDER BRACE	1
9	188003	CONVEYOR BRACKET x 5"	1

AUGER CONVEYOR ASSEMBLY



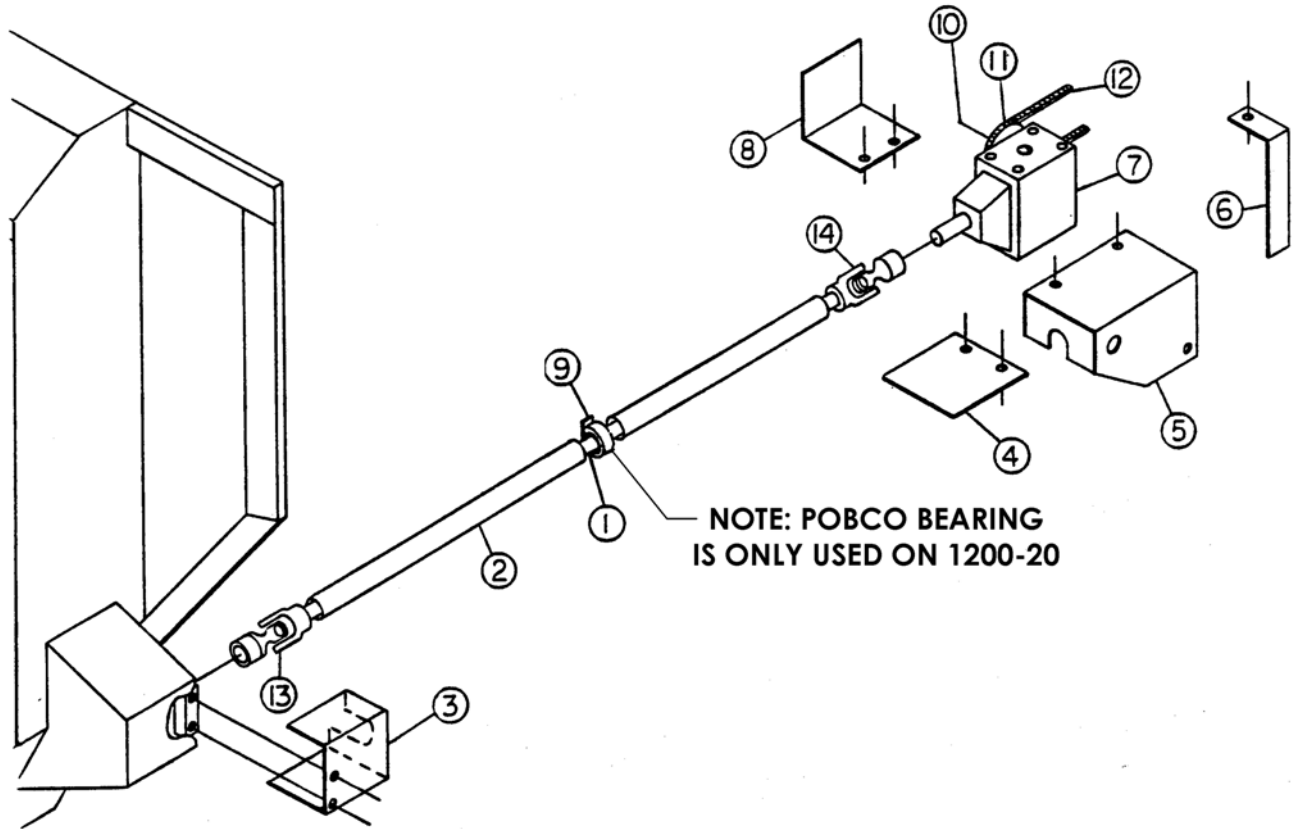
REF. NO.	PART NO.	DESCRIPTION	QTY
1	190067	CONV IDLER BLOCK - 4 5/8".....	2
2	190069	SHAFT RETAINER 2 1/2" OD.....	4
3	190070	CONV IDLER BLOCK - 3 1/8".....	2
4	190074	SPRKT SPACER x 11/16".....	2
5	320548	#50RC x 48 PITCHES COMP.....	2
6	320558	#50RC x 58 PITCHES COMP.....	2
7	330520	DS50A21 1 1/4" SPRKT.....	1
8	330521	DS50A21H 1 1/2" SPRKT.....	2
9	330522	50B21H 1 1/2" SPRKT.....	2
10	341624	1 1/2" BEARING INSERT.....	8
11	360000	HYDRAULIC MOTOR, WHITE RE 12.4 CU IN.....	1
12	874174	36"-4 AUG CONV CHN GUARD W/A.....	1
13	874175	36" 4-AUG CVY BRG HOUSING W/A.....	4
14	874176	36"-4 AUG CONV BODY WA.....	1
15	874178	DISCHARGE AUGER W.A. 9 x 40 1/2.....	4

800 & 1000 FEEDER CROSS AUGER DRIVELINE



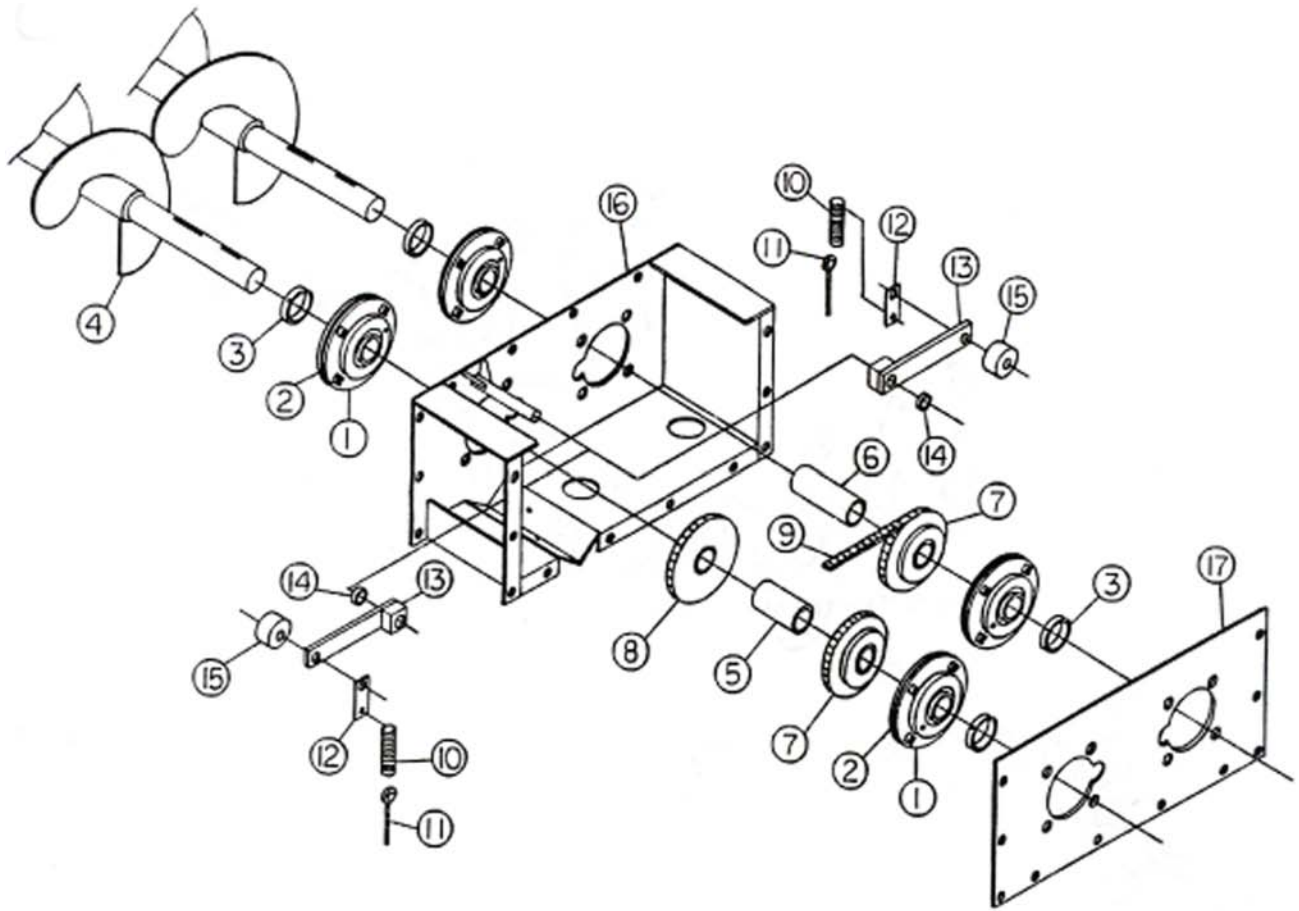
REF. NO	PART NO.	DESCRIPTION	QTY.
1	188215	800 CROSS AUGER DRIVELINE	1
2	188328	1000 CROSS AUGER DRIVELINE	1
3	188251	800 DRIVELINE SHIELD.....	1
4	188329	1000 DRIVELINE SHIELD.....	1
5	874063	FEEDER DRIVE SHIELD WA	1
6	188243	GEARBOX SHIELD.....	1
7	874064	GEARBOX SHIELD WA.....	1
8	188247	DRIVE SHIELD.....	1
9	344016	GEARBOX.....	1
10	188241	INSIDE DRIVE SHIELD	1
11	336028	BUSHING, 1-3/4"	1
12	330817	SPROCKET, 80SK17H	1
13	320848	ROLLER CHAIN, #80, 48 PITCH COMPLETE	1
14	781216	U-JOINT, 1-1/2" RND x 1-3/4"	1
15	338230	U-JOINT, 1-1/2" RND x 1-1/2" RND, W2300	1

1200 FEEDER CROSS AUGER DRIVELINE



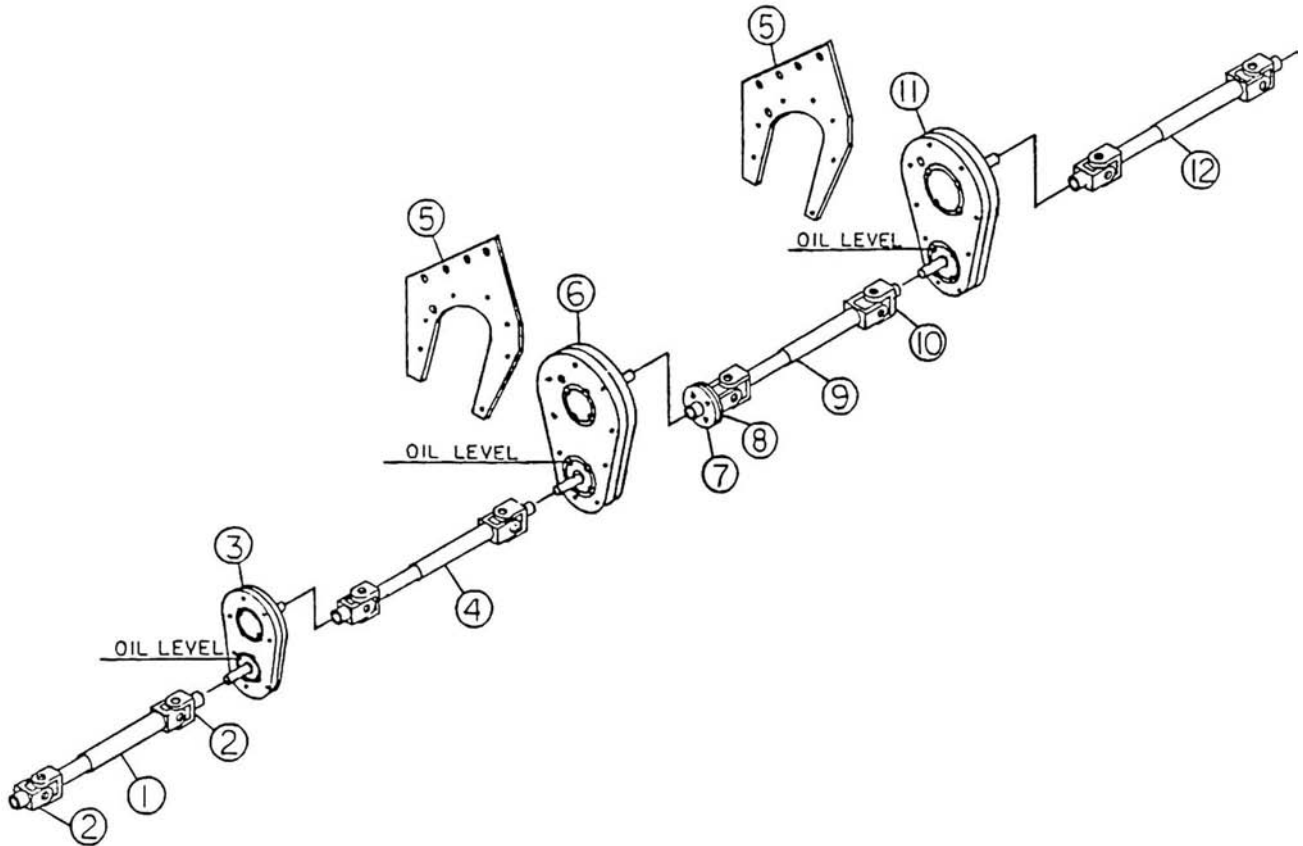
REF. NO	PART NO.	DESCRIPTION	QTY.
1	188240	CROSS AUGER DRIVELINE	1
2	188252	DRIVELINE SHIELD.....	2
3	874063	DRIVE SHIELD WA.....	1
4	188243	GEARBOX SHIELD.....	1
5	874064	GEARBOX SHIELD WA.....	1
6	188247	DRIVE SHIELD.....	1
7	344016	GEARBOX.....	1
8	188241	INSIDE DRIVE SHIELD.....	1
9	341024	PABCO BEARING, 1-1/2"	1
10	336028	BUSHING, 1-3/4"	1
11	330817	SPROCKET, 80SK17H	1
12	320848	ROLLER CHAIN, #80 x 48 PITCH COMPLETE	1
13	338230	U-JOINT, 1-1/2" RND x 1-1/2" RND, W2300.....	1
14	781260	U-JOINT, 1-1/2" RND x 1-3/4" RND	1

CROSS AUGER ASSEMBLY #781188



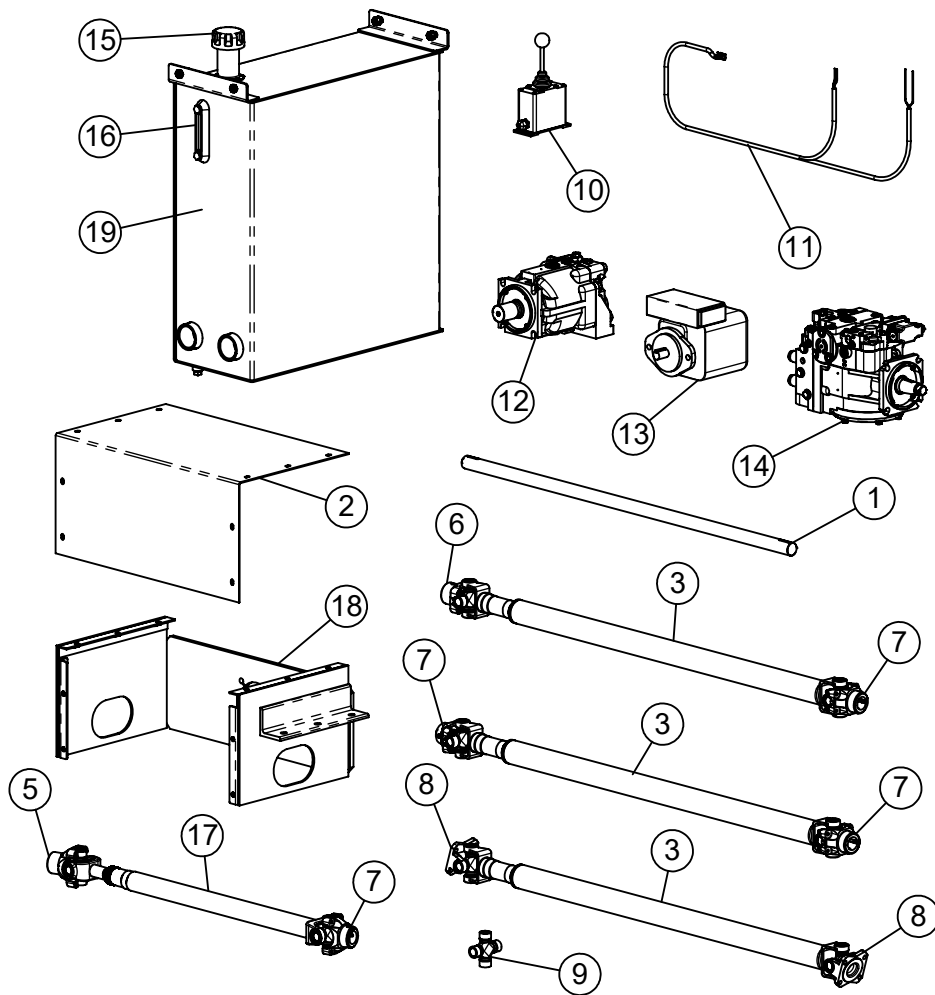
REF. NO	PART NO.	DESCRIPTION	QTY.
1	341930	BEARING STAMPING WITH ZERK.....	4
2	341931	BEARING STAMPING WITHOUT ZERK	4
3	341632	BEARING WITH LOCK, 2"	4
4	874044	CROSS AUGER WA	2
5	188051	PIPE SPACER, 2" x 4"	1
6	188052	PIPE SPACER, 2" x 5-1/2"	1
7	330624	SPROCKET, 60 B 24H, 2" BORE.....	2
8	330809	SPROCKET, 80 B 19H, 2" BORE.....	1
9	320656	ROLLER CHAIN, #60, 56 PITCH COMPLETE	1
10	410008	PULL SPRING, 1-1/4" x 5-1/4" x 3/16"	2
11	410851	EYEBOLT, 3/8" x 6" x 3/4" x 7-1/2" x 4"	2
12	187153	PULL TAB, 1/2" x 1/4"	2
13	873112	IDLER ARM WA	2
14	410416	SET COLLAR, 1"	2
15	188054	IDLER BLOCK, 1/2" x 2" x 2-1/2"	2
16	874046	CROSS AUGER DRIVE BOX WA	1
17	188182	CROSS AUGER REAR FRAME PLATE.....	1

FEEDER DRIVE 50% SLOW DOWN (OPTIONAL)



REF. NO	PART NO.	DESCRIPTION	QTY.
1	338053	DRIVESHAFT ASSEMBLY	1
2	338420	YOKE, 1-1/4"	2
3	344019	GEARBOX, 1:1, HUB CITY 280	1
4	780486	DRIVESHAFT ASSEMBLY, 1-1/4" x 1-3/8"	1
5	188162	GEARBOX MOUNT PLATE	2
6	344025	GEARBOX WITH PUMP MOUNT, 3:1	1
7	338428	DRIVE FLANGE, 1-3/4", 3-1-463	1
8	338429	FLANGE YOKE, 1350, 3-2-119	1
9	338054	DRIVESHAFT ASSEMBLY	1
10	338424	YOKE, 1-3/8"	1
11	344022	GEARBOX, 2:1	1
12	338048	DRIVELINE, W2500	1

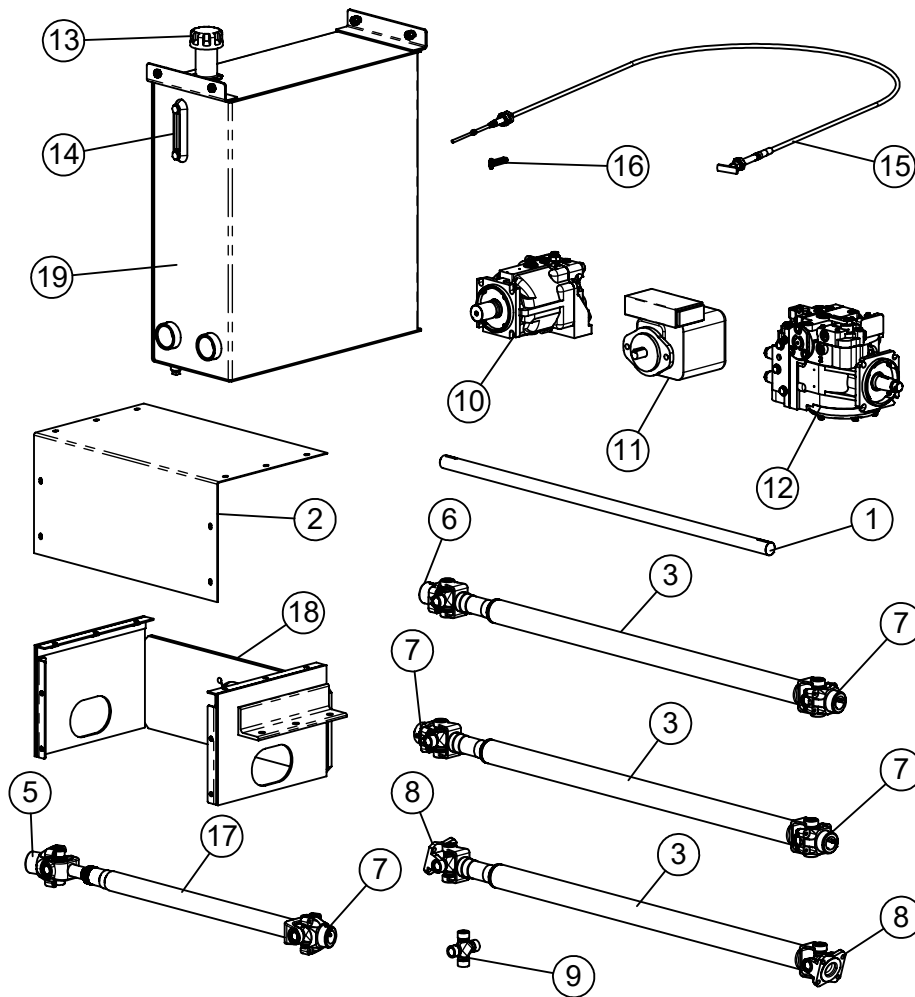
1200-20 FEEDER HYDROSTAT DRIVE ELECTRIC DISPLACEMENT CONTROL



ITEM #	PART #	DESCRIPTION	QTY.
1	185504	JACKSHAFT, 700 TRK, 1-3/8" x 48"	1
2	189576	SHORT PUMP BOX COVER	1
3	338054	SPICER DRIVE SHAFT ASSY 7703-5204	3
4	338413	U STRAP & BOLT KIT 3-70-28X (1350)	* AN
5	338415	SPICER YOKE 1350 1-1/2" TAPER	1
6	338423	SPICER YOKE 1-1/4" RD BORE, 5/16" KQY, (3-4-283-1)	1
7	338424	YOKE 1-3/8" RD BORE, 5/16" KQY (3-4-613-1)	4
8	338429	FLANGE YOKE, SPICER 1350	2
9	338436	CROSS KIT, SPICER 1350 5-178X	* AN
10	357710	MACHINE CONTROL HANDLE	1
11	358444	WIRING HARMESS, TRUCK EDC	1
12	360100	HYDRAULIC MOTOR, 1-3/4"/KEYED DANFOSS 100cc	1
13	362020	PUMP, PFWH 20 PISTON	1
14	362099	HYDRAULIC PUMP, SUNDSTRAND 100cc EDC	1
15	362551	HI-NECK FILLER CAP ASSY.	1
16	362555	SIGHT GAUGE 5"	1
17	781401	1350 SHAFT AND YOKE ASSY	1
18	872609	22,075,100 SHORT PUMP BOX WA	1
19	873153P	HYDROSTAT RESERVIOR WA	1

* AN = AS NEEDED

1200-20 FEEDER HYDROSTAT DRIVE MECHANICAL CABLE CONTROL



ITEM #	PART #	DESCRIPTION	QTY.
1	185504	JACKSHAFT, 700 TRK, 1-3/8" x 48"	1
2	189576	SHORT PUMP BOX COVER	1
3	338054	SPICER DRIVE SHAFT ASSY 7703-5204	* 3
4	338413	U STRAP & BOLT KIT 3-70-28X (1350)	AN
5	338415	SPICER YOKE 1350 1-1/2" TAPER	1
6	338423	SPICER YOKE 1-1/4" RD BORE, 5/16" KQY, (3-4-283-1)	1
7	338424	YOKE 1-3/8" RD BORE, 5/16" KQY (3-4-613-1)	4
8	338429	FLANGE YOKE, SPICER 1350	* 2
9	338436	CROSS KIT, SPICER 1350 5-178X	AN
10	360100	HYDRAULIC MOTOR, 1-3/4"/KEYED DANFOSS 100cc	1
11	362020	PUMP, PFWH 20 PISTON	1
12	362100	HYDRAULIC PUMP, SUNSTRAND 100cc LH MNL	1
13	362551	HI-NECK FILLER CAP ASSY.	1
14	362555	SIGHT GAUGE 5"	1
15	370304	T-LOCK CABLE W/ 1/4" CLEVIS	1
16	370342	CLEVIS 1/4"	1
17	781401	1350 SHAFT AND YOKE ASSY	1
18	872609	22,075,100 SHORT PUMP BOX WA	1
19	873153P	HYDROSTAT RESERVIOR WA	1

* AN = AS NEEDED